

Southern Illinois University at Edwardsville
Survey of 1998 Baccalaureate Graduates -- One Year Out

Survey Results for Schools

April 2000

Survey Administered By
The Office of Undergraduate Assessment and Program Review

Survey Results Compiled By
The Office of Institutional Research and Studies

Southern Illinois University at Edwardsville
Survey of 1998 Baccalaureate Graduates -- One Year Out

Contents

Introduction

Methodology

Survey Population and Respondents

Charts: *1998 Baccalaureate Recipients, Profile*

Gender

Race/Ethnic

Age at Graduation

Matriculation Status

Time to Degree for New Freshmen

Time to Degree for New Transfers

Table: *Comparison of All Graduates to Survey Respondents*

Survey Results

Charts: *1998 Baccalaureate Graduates Five Years Out, Satisfaction*
Present Attitude Toward the University
Present Attitude Towards Alumni's Bachelor's Degree Major
Quality of SIUE Education Relative to That of Friends at Other Schools

1998 Baccalaureate Graduates Five Years Out, Additional Education
Enrolled Since Bachelor's Degree?
How Well Bachelor's Degree Prepared Alumni for Additional Degree

1998 Baccalaureate Graduates Five Years Out, Employment Status
Employment Status
Place of Employment
Job in Field Related to Major?
Job Satisfaction
How Well Bachelor's Degree Prepared Alum for Current Career Path
Mean Salary of Alumni Employed Full Time

Tables:

Part I Employment Questions

Part II Education Questions

Part III Satisfaction Questions

Part IV Educational Effectiveness Questions

Part V Quality Questions

Part VI Helpfulness of University Experiences Questions

**Southern Illinois University Edwardsville
Survey of 1998 Baccalaureate Graduates -- One Year Out**

Introduction

This one-year out baccalaureate survey was done to provide data for the University's undergraduate program reviews and other planning uses. Although it is the same format as the surveys done as part of the IBHE alumni survey series, it was done in addition to those. The scheduled survey this year was a one-year out survey of 1998 baccalaureate graduates, the results of which are reported separately.

IBHE Survey Schedule and Population Definition		
Survey Year	Survey Type	Survey Group
1992	One-Year Out Survey	Class of '91
1993	Five-Year Out Survey	Class of '88
1994	Ten-Year Out Survey	Class of '84
1995	One-Year Out Survey	Class of '94
1996	Five-Year Out Survey	Class of '91
1997	Nine-Year Out Survey	Class of '88
1998	One-Year Out Survey	Class of '97
1999	Five-Year Out Survey	Class of '94
2000	Nine-Year Out Survey	Class of '91
2001	One-Year Out Survey	Class of '00
2002	Five-Year Out Survey	Class of '97
2003	Nine-Year Out Survey	Class of '94

After the first six years, the surveys were reviewed and changed, modifying some questions and value scales, and adding some additional questions. (See Appendix B for more detailed information on the "Public University Baccalaureate Graduates' Follow-Up Surveys.")

The current survey was administered during the spring of 1999 to 1998 baccalaureate graduates of SIUE. The questionnaire includes 18 questions common to all Illinois public universities. These are the first 18 questions in the survey, forming Parts I, II, III, and IV (Employment Questions, Education Questions, Satisfaction Questions, and Educational Practices Questions). SIUE added to these one question on industry of employment and three additional questions on educational practices, and appended three additional parts to the survey to add questions about advisement, program quality, and the undergraduate experience. (A questionnaire is included in Appendix A.)

Methodology

The survey questionnaire and a cover letter were adapted from the questionnaire and letter developed for previous surveys. SIUE Alumni Services provided current addresses for calendar year 1998 graduates as determined from institutional records. The survey was distributed in May 1999 to May 1998 baccalaureate graduates and in August 1999 to August 1998 and December 1998 baccalaureate graduates. Each envelope included a cover letter, a questionnaire, and a postage-paid, pre-addressed return envelope. Each questionnaire was stamped with a sequential, identifying number which was also stamped on a listing of the graduates (this aided in identifying the surveys when returned).

On May 6, 1999, approximately two weeks before the first set of surveys were to be mailed, a postcard was sent to the 689 May 1998 baccalaureate graduates for whom addresses were available, notifying the alumni that they would be receiving a questionnaire and encouraging them to complete and return the survey. Surveys were mailed first class on May 19, 1999. On June 3rd, approximately two weeks after the survey was mailed and when the rate of survey returns had decreased, a follow-up

postcard requesting that the survey be returned was mailed to each student who had not returned his or her survey.

The second distribution began with the preliminary postcard mailed on July 30, 1999 to the 724 August and December 1998 baccalaureate graduates with known addresses. Surveys were mailed first class to this group on August 13, 1999 with a follow-up post card mailed to non-responders on August 27, 1999.

Returned surveys began arriving on May 21st and continued through the summer and fall, with a few arriving as late as November 1999. As the surveys came in, each was matched with the corresponding stamped listing. The students' names were then checked against the alphabetic list of alumni to verify (or, if the alumnus chose not to provide the identification number, to obtain) the student identification number. The student identification number was the key which allowed merging of survey data with administrative records (e.g., biographic, graduation, matriculation, and enrollment information).

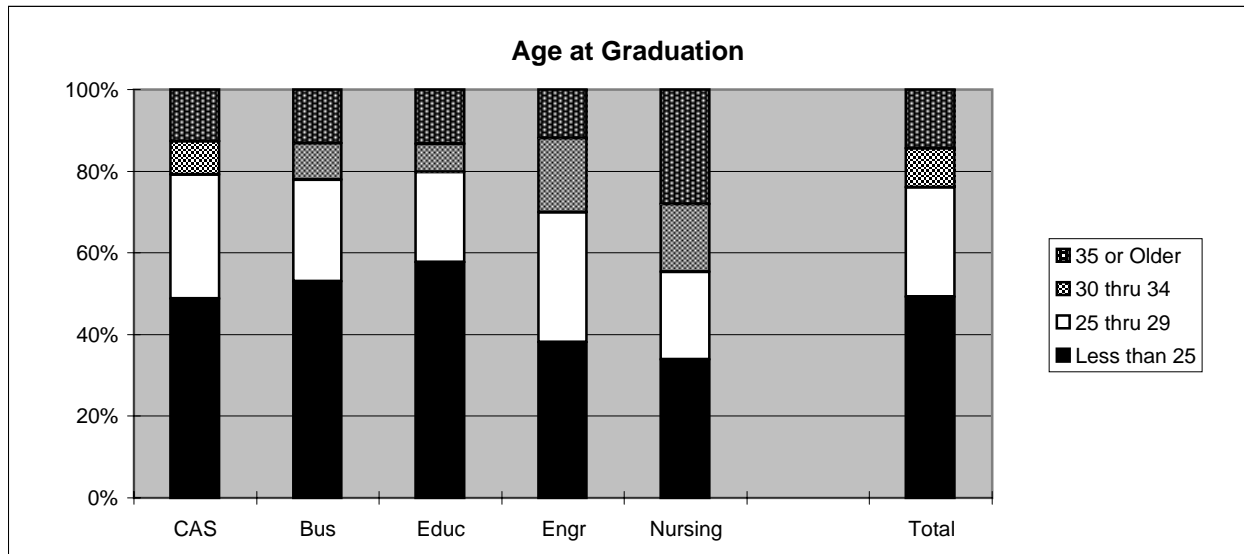
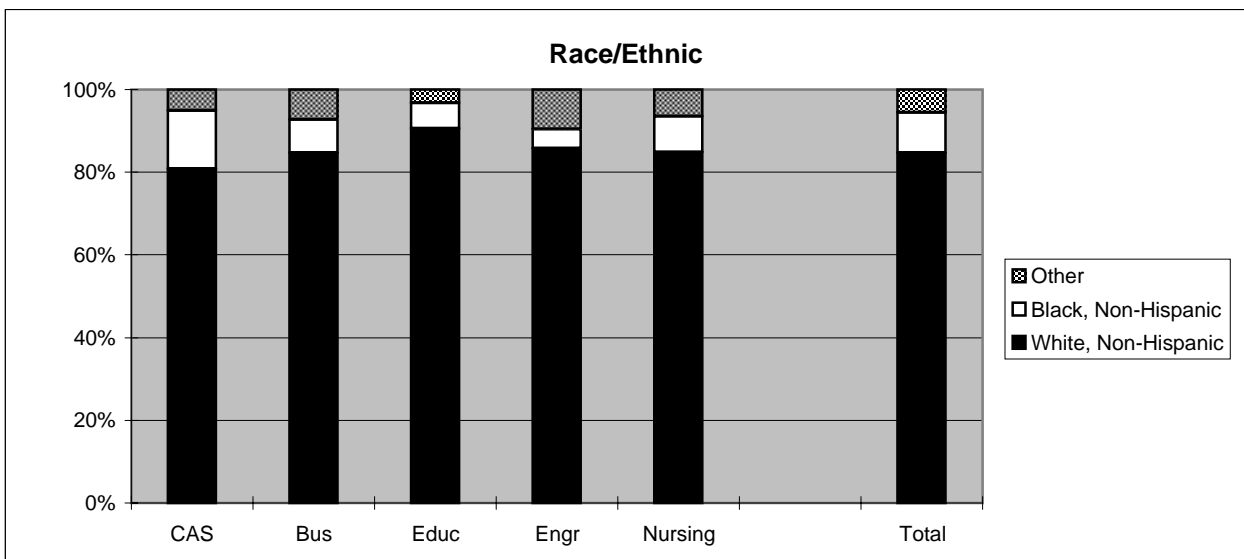
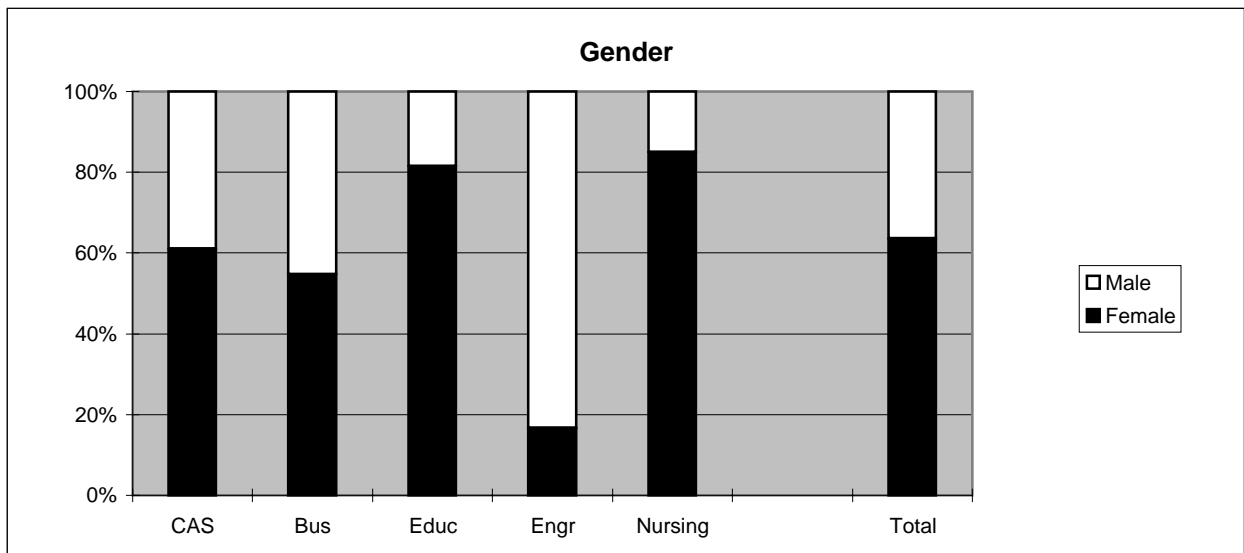
Southern Illinois University Edwardsville
Survey of 1998 Baccalaureate Graduates -- One Year Out

Survey Population and Respondents

	Number of Graduates
1998 Baccalaureate Degrees	1,432
Less persons who received 2 baccalaureate degrees	4
1998 Baccalaureate Graduates	1,428
Less Graduates with No Address Available *	15
Graduates Surveyed	1,413
Less Non-Deliverable Surveys	25
Less Non-Responding Graduates	921
Survey Respondents	467
Gross Response Rate (Respondents/Total Surveyed)	33.05%
Adjusted Response Rate (Respondents/Delivered Surveys)	33.65%

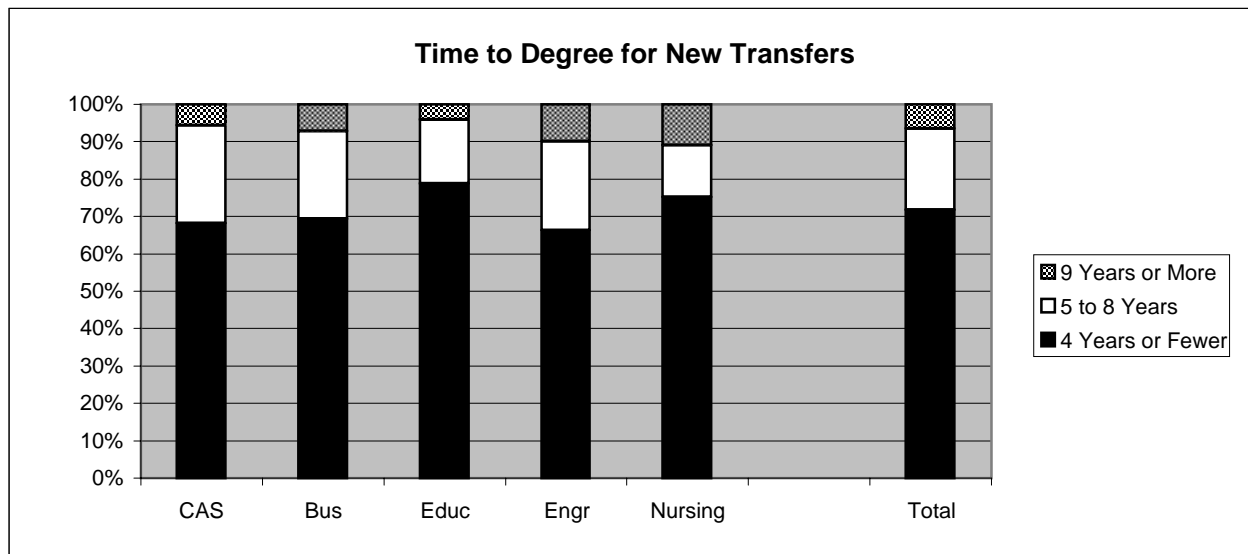
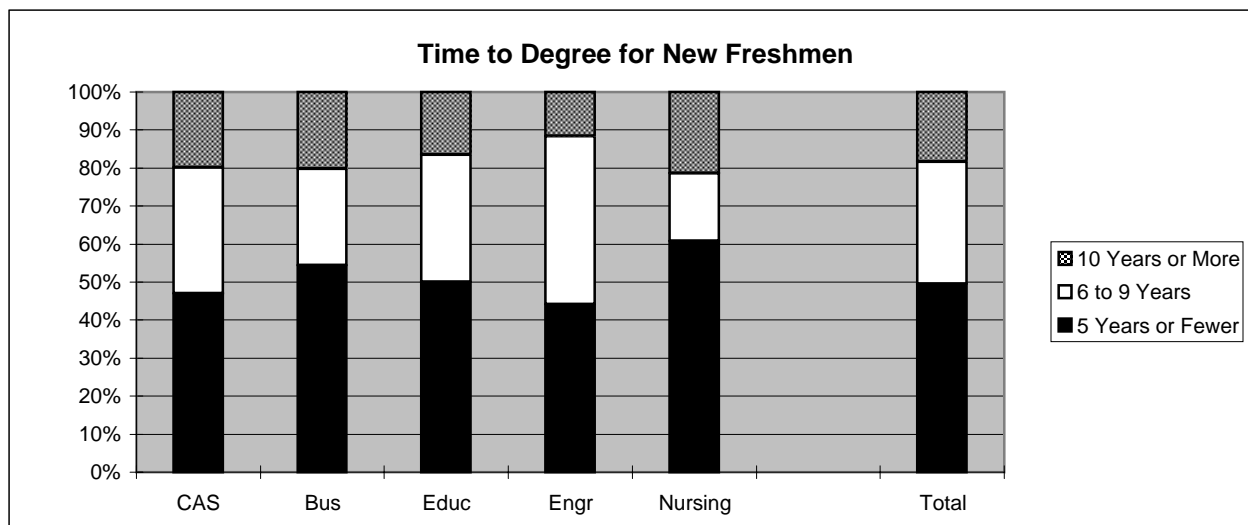
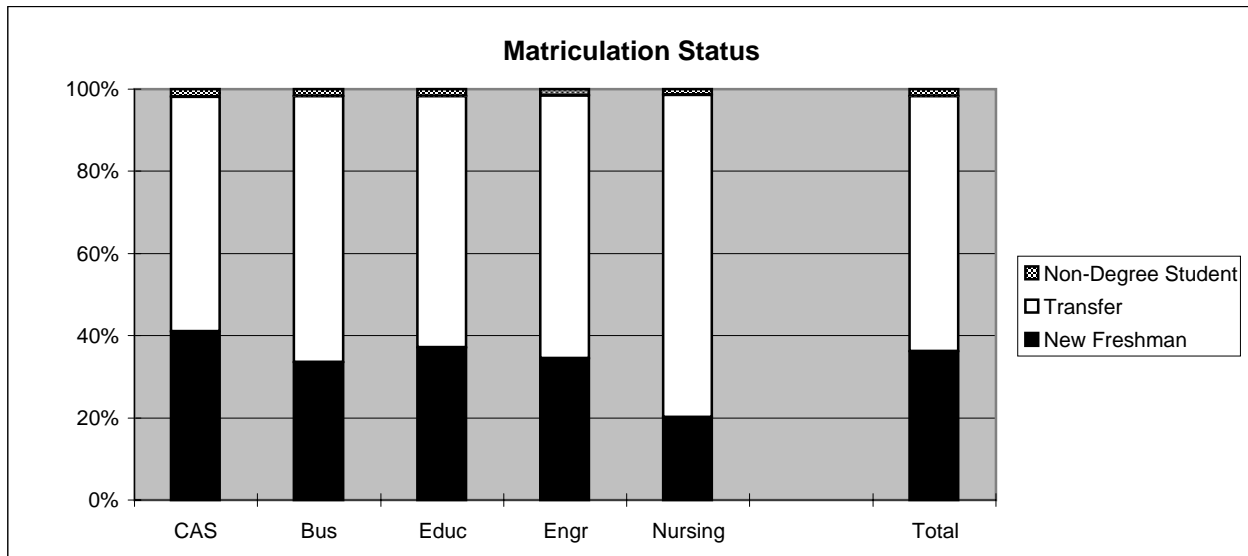
* Includes deceased alumni, foreign addresses and known bad addresses

1998 Baccalaureate Recipients Profile



1998 Baccalaureate Recipients

Profile, con't.



Southern Illinois University Edwardsville
Survey of 1998 Baccalaureate Graduates -- One Year Out

Comparison of All Graduates to Survey Respondents

School Detail	All Graduates					
	CAS	Bus	Educ	Engr	Nursing	Total
Total	566	236	361	126	139	1428
Female	61.0%	54.7%	81.4%	16.7%	84.9%	63.5%
Male	39.0%	45.3%	18.6%	83.3%	15.1%	36.5%
Missing Data	0.0%	0.0%	0.0%	0.0%	0.0%	0.0%
White, Non-Hispanic	80.7%	84.7%	90.6%	85.7%	84.9%	84.7%
Black, Non-Hispanic	14.1%	8.1%	6.1%	4.8%	8.6%	9.7%
Asian/Pacific Islander	1.6%	1.7%	0.8%	4.8%	4.3%	2.0%
American Indian/Alaskan Nativ	0.5%	1.3%	0.6%	0.0%	0.7%	0.6%
Hispanic	1.6%	1.3%	1.9%	0.0%	0.0%	1.3%
Non-Resident Alier	1.2%	3.0%	0.0%	4.8%	1.4%	1.5%
Missing Data	0.2%	0.0%	0.0%	0.0%	0.0%	0.1%
Age at Graduation	range: 20 to 65	21 to 55	21 to 51	22 to 49	21 to 53	20 to 65
	mediar: 24.1	23.8	23.4	25.1	27.5	24.1
Bachelor of Science	68.0%	75.4%	92.5%	96.0%	100.0%	81.0%
Bachelor of Music	3.0%	0.0%	0.0%	0.0%	0.0%	1.2%
Bachelor of Arts	20.8%	0.0%	7.5%	4.0%	0.0%	10.5%
Bachelor of Fine Arts	1.4%	0.0%	0.0%	0.0%	0.0%	0.6%
Bachelor of Sci in Accountancy	0.0%	24.6%	0.0%	0.0%	0.0%	4.1%
Bachelor of Liberal Studie:	6.7%	0.0%	0.0%	0.0%	0.0%	2.7%
Missing Data	0.0%	0.0%	0.0%	0.0%	0.0%	0.0%
Graduated Spring 1998	48.2%	48.3%	50.1%	52.4%	48.9%	49.2%
Graduated Summer 1998	25.4%	19.9%	11.4%	17.5%	4.3%	18.2%
Graduated Fall 1998	26.3%	31.8%	38.5%	30.2%	46.8%	32.6%
Missing Data	0.0%	0.0%	0.0%	0.0%	0.0%	0.0%
Matriculated as a New Freshma	41.0%	33.5%	37.1%	34.1%	20.1%	36.1%
Matriculated as a Transfe	57.1%	64.8%	61.2%	63.5%	78.4%	62.0%
Matriculated as a Non-Degree Studer	1.9%	1.7%	1.7%	1.6%	1.4%	1.8%
Missing Data	0.0%	0.0%	0.0%	0.8%	0.0%	0.1%
Time to Degree for New Freshmei						
3 Years or Fewer	0.4%	1.3%	0.7%	0.0%	0.0%	0.6%
4 Years	18.1%	26.6%	17.9%	11.6%	28.6%	19.4%
5 Years	28.4%	26.6%	31.3%	32.6%	32.1%	29.5%
6 Years	15.1%	11.4%	17.9%	18.6%	7.1%	15.1%
7 Years	10.3%	8.9%	8.2%	16.3%	7.1%	9.9%
8 Years	4.3%	3.8%	3.7%	4.7%	3.6%	4.1%
9 Years	3.4%	1.3%	3.7%	4.7%	0.0%	3.1%
10 Years	2.6%	3.8%	1.5%	0.0%	3.6%	2.3%
11 Years or More	17.2%	16.5%	14.9%	11.6%	17.9%	16.1%
Missing Data	0.0%	0.0%	0.0%	0.0%	0.0%	0.0%
Time to Degree for Transfers						
2 or Fewer Years	13.0%	16.3%	16.3%	11.3%	19.3%	15.0%
3 Years	31.9%	37.3%	41.2%	31.3%	35.8%	35.6%
4 Years	23.2%	15.7%	21.3%	23.8%	20.2%	21.1%
5 Years	13.6%	12.4%	7.2%	10.0%	6.4%	10.6%
6 Years	5.9%	5.2%	5.0%	7.5%	4.6%	5.5%
7 Years	4.3%	3.3%	3.2%	2.5%	0.9%	3.3%
8 Years	2.5%	2.6%	1.8%	3.8%	1.8%	2.4%
9 Years	0.3%	2.0%	1.4%	1.3%	0.9%	1.0%
10 Years or More	5.3%	5.2%	2.7%	8.8%	10.1%	5.5%
Missing Data	0.0%	0.0%	0.0%	0.0%	0.0%	0.0%
Graduating GPA (4 point scale)	Mean: 3.059	2.967	3.288	2.957	3.167	3.103
	Std Dev: 0.483	0.493	0.422	0.476	0.419	0.478

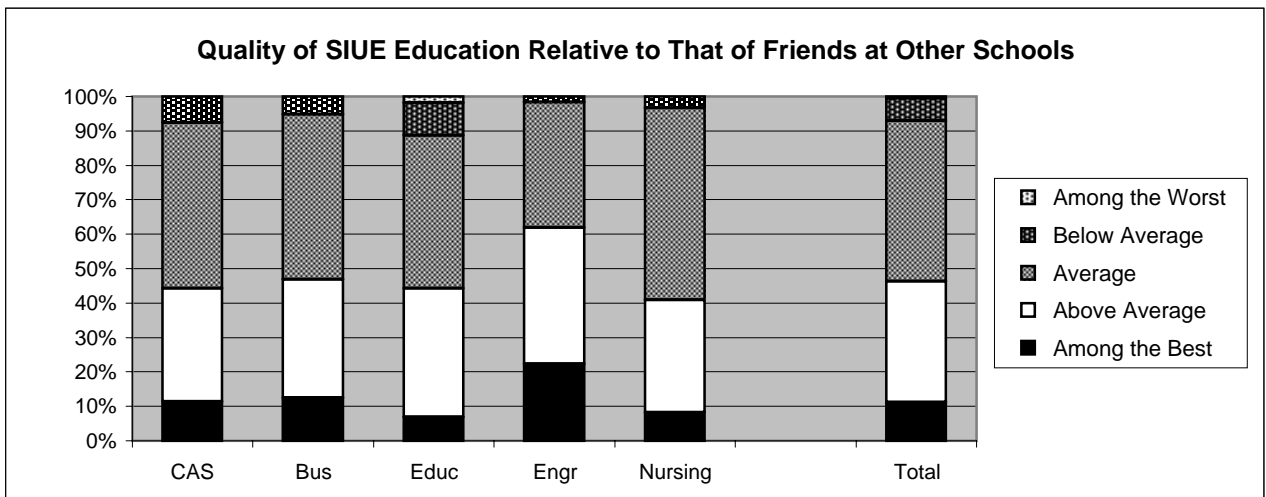
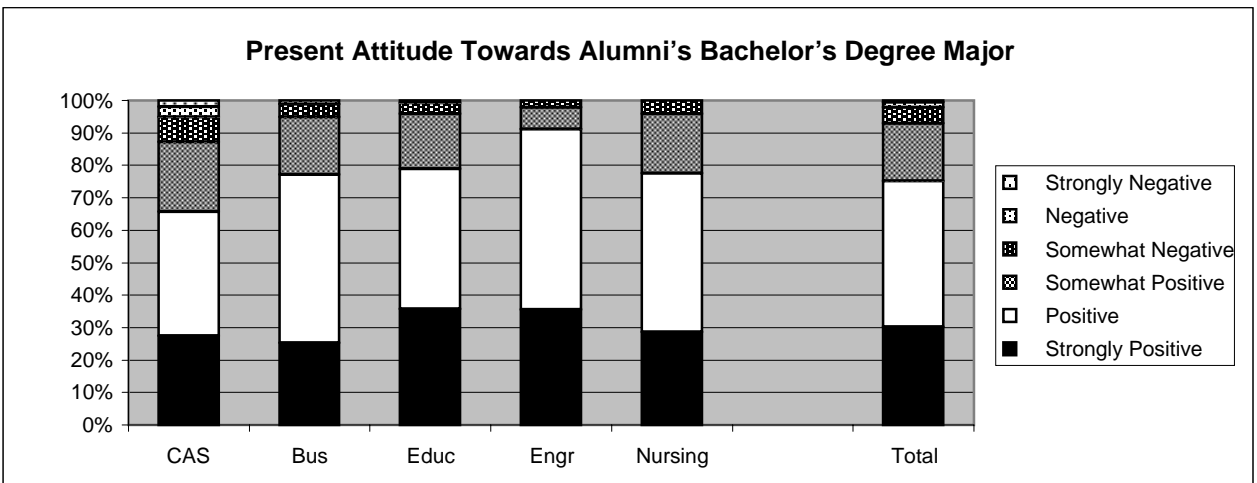
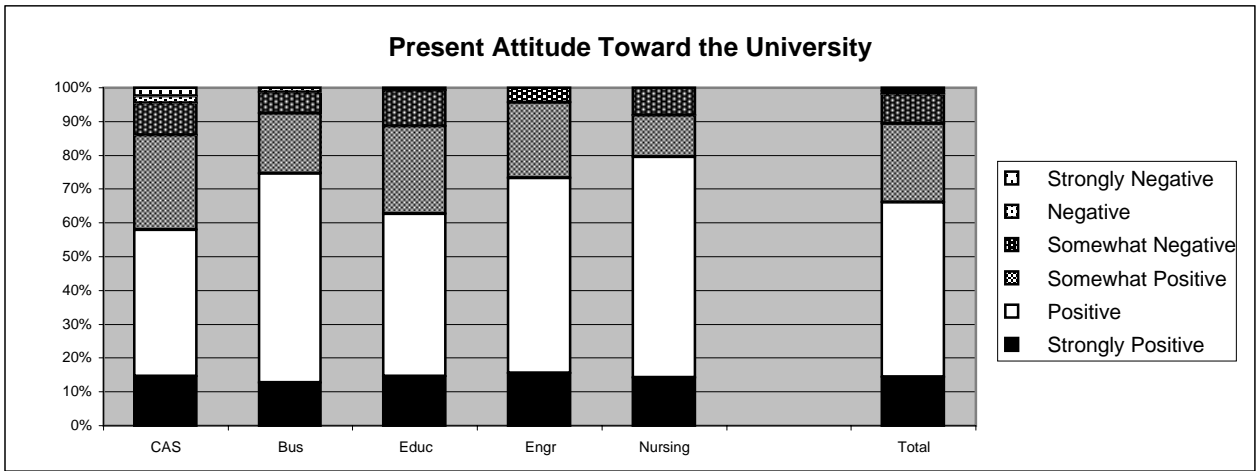
Southern Illinois University Edwardsville
Survey of 1998 Baccalaureate Graduates -- One Year Out

Comparison of All Graduates to Survey Respondents, con't.

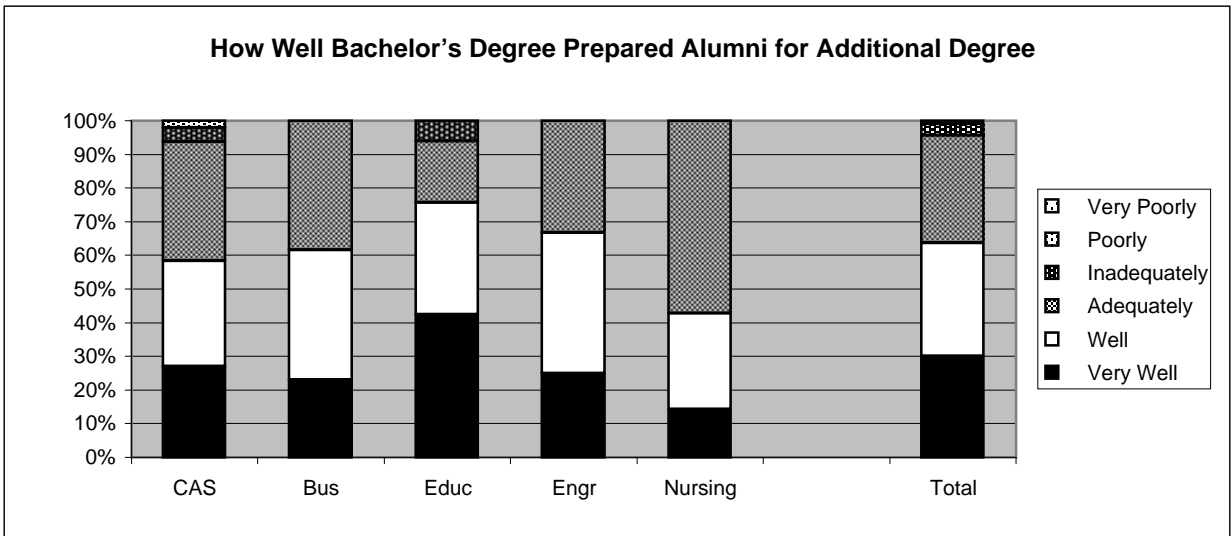
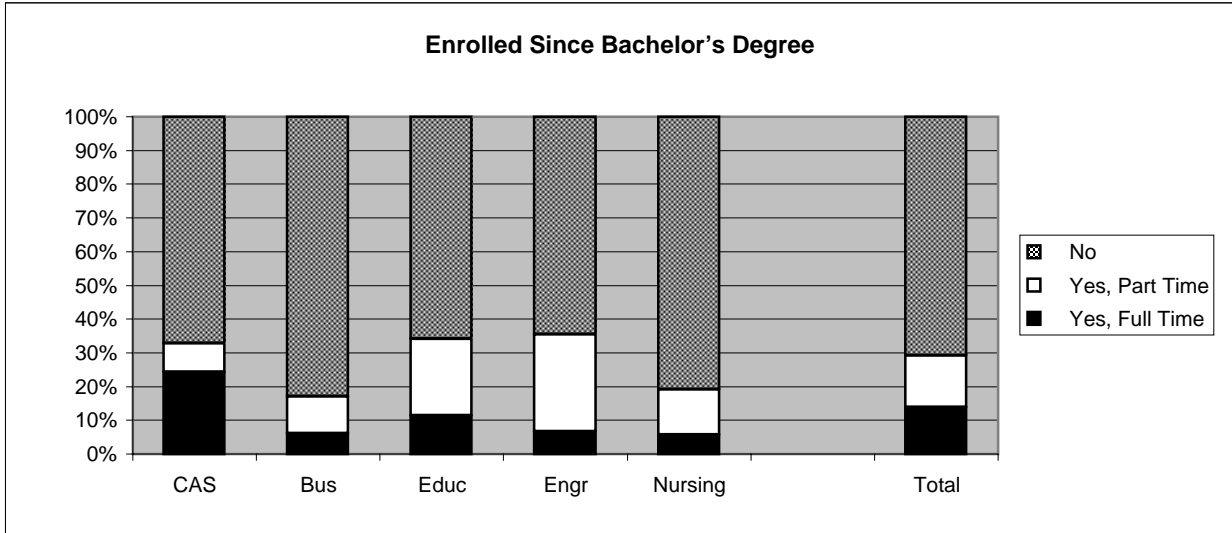
School Detail	All One Year Out Survey Respondents					
	CAS	Bus	Educ	Engr	Nursing	Total
Total	162	84	124	45	52	467
Female	63.6%	59.5%	92.7%	8.9%	86.5%	67.9%
Male	36.4%	40.5%	7.3%	91.1%	13.5%	32.1%
Missing Data	0.0%	0.0%	0.0%	0.0%	0.0%	0.0%
White, Non-Hispanic	87.7%	89.3%	91.9%	95.6%	88.5%	89.9%
Black, Non-Hispanic	7.4%	4.8%	4.8%	2.2%	7.7%	5.8%
Asian/Pacific Islander	1.2%	1.2%	1.6%	2.2%	1.9%	1.5%
American Indian/Alaskan Nativ	1.2%	1.2%	0.0%	0.0%	1.9%	0.9%
Hispanic	0.6%	1.2%	1.6%	0.0%	0.0%	0.9%
Non-Resident Alie	1.9%	2.4%	0.0%	0.0%	0.0%	1.1%
Missing Data	0.0%	0.0%	0.0%	0.0%	0.0%	0.0%
Age at Graduation	range:	range:	range:	range:	range:	range:
	20 to 65	21 to 50	21 to 49	22 to 41	21 to 51	20 to 65
	mediar	mediar	mediar	mediar	mediar	mediar
	24.6	23.4	23.3	25.8	32	24.4
Bachelor of Science	69.1%	69.0%	92.7%	95.6%	100.0%	81.4%
Bachelor of Music	3.1%	0.0%	0.0%	0.0%	0.0%	1.1%
Bachelor of Arts	22.2%	0.0%	7.3%	4.4%	0.0%	10.1%
Bachelor of Fine Arts	0.6%	0.0%	0.0%	0.0%	0.0%	0.2%
Bachelor of Sci in Accountancy	0.0%	31.0%	0.0%	0.0%	0.0%	5.6%
Bachelor of Liberal Studie	4.9%	0.0%	0.0%	0.0%	0.0%	1.7%
Missing Data	0.0%	0.0%	0.0%	0.0%	0.0%	0.0%
Graduated Spring 1998	48.1%	50.0%	53.2%	60.0%	50.0%	51.2%
Graduated Summer 1998	24.1%	20.2%	9.7%	17.8%	5.8%	16.9%
Graduated Fall 1998	27.8%	29.8%	37.1%	22.2%	44.2%	31.9%
Missing Data	0.0%	0.0%	0.0%	0.0%	0.0%	0.0%
Matriculated as a New Freshma	44.4%	33.3%	33.9%	26.7%	11.5%	34.3%
Matriculated as a Transfe	54.3%	66.7%	64.5%	71.1%	84.6%	64.2%
Matriculated as a Non-Degree Studer	1.2%	0.0%	1.6%	0.0%	3.8%	1.3%
Missing Data	0.0%	0.0%	0.0%	2.2%	0.0%	0.2%
Time to Degree for New Freshme						
3 Years or Fewer	1.4%	3.6%	0.0%	0.0%	0.0%	1.3%
4 Years	25.0%	39.3%	23.8%	0.0%	33.3%	25.6%
5 Years	22.2%	17.9%	38.1%	41.7%	33.3%	27.5%
6 Years	12.5%	14.3%	11.9%	16.7%	0.0%	12.5%
7 Years	8.3%	3.6%	7.1%	33.3%	16.7%	9.4%
8 Years	4.2%	7.1%	2.4%	0.0%	0.0%	3.8%
9 Years	2.8%	0.0%	2.4%	8.3%	0.0%	2.5%
10 Years	4.2%	0.0%	0.0%	0.0%	0.0%	1.9%
11 Years or More	19.4%	14.3%	14.3%	0.0%	16.7%	15.6%
Missing Data	0.0%	0.0%	0.0%	0.0%	0.0%	0.0%
Time to Degree for Transfers						
2 or Fewer Years	18.2%	17.9%	18.8%	18.8%	22.7%	19.0%
3 Years	31.8%	42.9%	36.3%	34.4%	40.9%	36.7%
4 Years	23.9%	12.5%	20.0%	12.5%	13.6%	18.0%
5 Years	9.1%	7.1%	8.8%	6.3%	4.5%	7.7%
6 Years	6.8%	8.9%	6.3%	12.5%	2.3%	7.0%
7 Years	5.7%	3.6%	2.5%	0.0%	0.0%	3.0%
8 Years	0.0%	0.0%	1.3%	3.1%	2.3%	1.0%
9 Years	0.0%	1.8%	1.3%	3.1%	0.0%	1.0%
10 Years or More	4.5%	5.4%	5.0%	9.4%	13.6%	6.7%
Missing Data	0.0%	0.0%	0.0%	0.0%	0.0%	0.0%
Graduating GPA (4 point scale)	Mean	Mean	Mean	Mean	Mean	Mean
	3.150	3.040	3.361	3.056	3.260	3.178
	Std Dev	Std Dev	Std Dev	Std Dev	Std Dev	Std Dev
	0.487	0.514	0.422	0.509	0.441	0.486

1998 Baccalaureate Graduates One Year Out

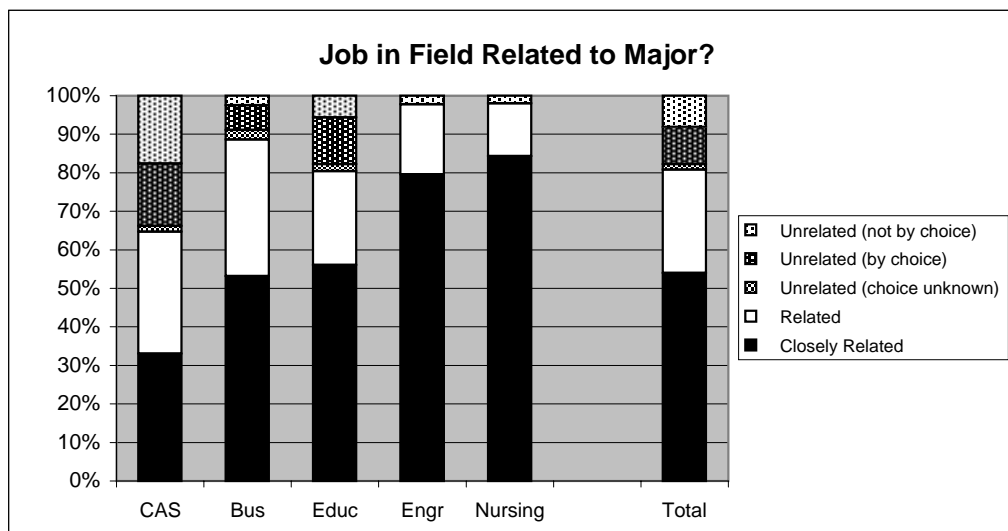
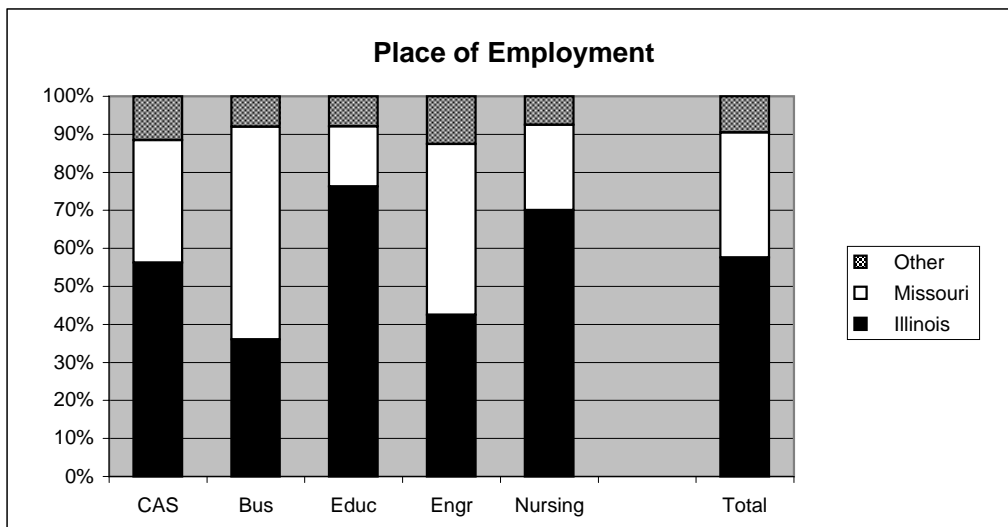
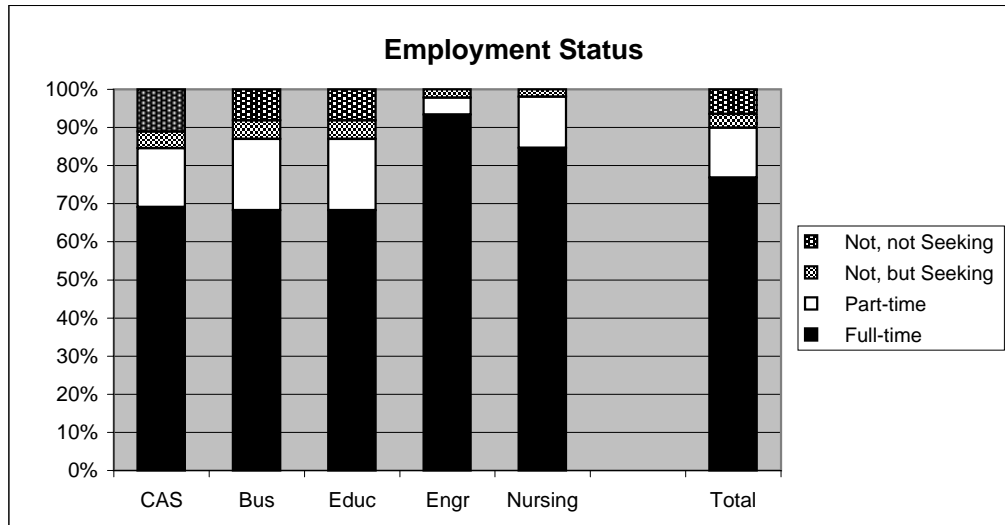
Satisfaction



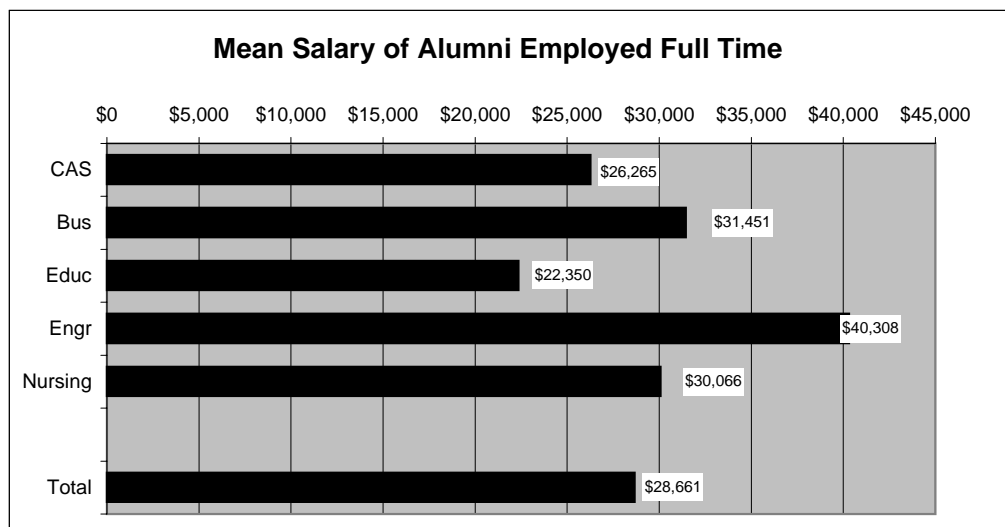
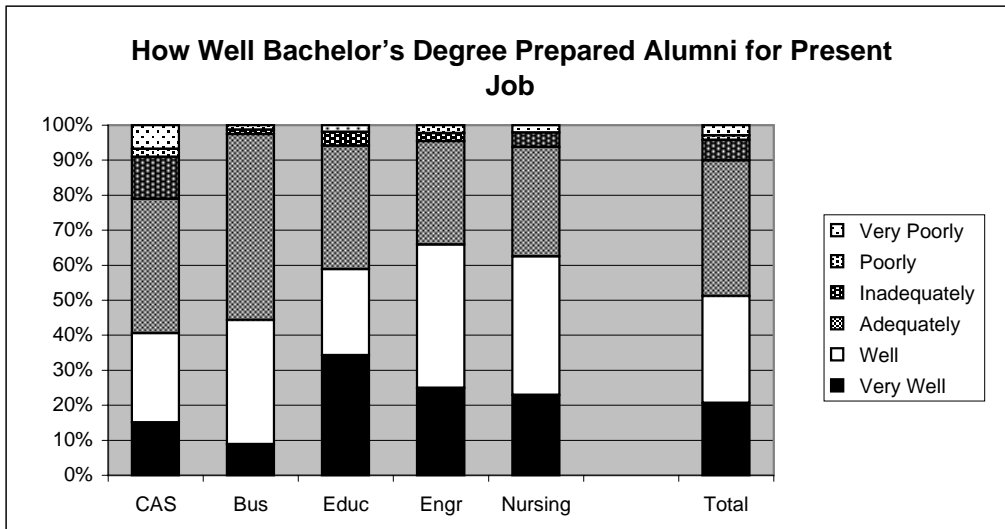
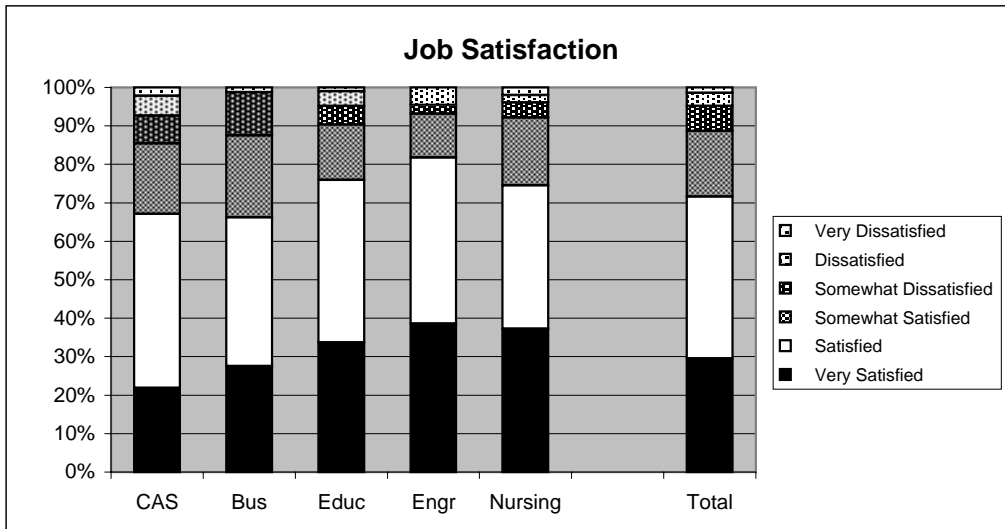
1998 Baccalaureate Graduates One Year Out Additional Education



Employment



1998 Baccalaureate Graduates One Year Out *Employment, con't.*



Southern Illinois University Edwardsville
Survey of 1998 Baccalaureate Graduates -- One Year Out
Survey Responses -- Part I
Employment Questions

School Detail	CAS	Bus	Educ	Engr	Nursing	Total
Number of Survey Respondents	162	84	124	45	52	467
1. Number Employed:						
Full-time	69.1%	68.3%	68.3%	93.3%	84.6%	76.8%
Part-time	15.4%	18.7%	18.7%	4.4%	13.5%	13.1%
Not, but Seeking	4.3%	4.9%	4.9%	2.2%	1.9%	3.6%
Not, not Seeking	11.1%	8.1%	8.1%	0.0%	0.0%	6.4%
Number Responding	162	123	123	45	52	466
The remaining questions in Part I were to be answered only by respondents who were employed full-time or part-time.						
	137	80	107	44	51	419
2. Place of Employment						
Illinois	56.2%	36.0%	76.2%	42.5%	70.0%	57.6%
Missouri	32.2%	56.0%	15.8%	45.0%	22.5%	32.9%
Other	11.6%	8.0%	7.9%	12.5%	7.5%	9.5%
Number Responding	121	75	101	40	40	377
3. Classification of Primary Employer						
Self-Employed or Private Practice	2.9%	3.8%	0.9%	2.3%	0.0%	2.2%
Business (Industrial, Commercial or Service)	36.0%	62.5%	12.1%	43.2%	0.0%	31.3%
Professional Firm (e.g., Engineering, Law)	3.7%	20.0%	0.0%	34.1%	0.0%	8.6%
College or University	11.8%	2.5%	5.6%	6.8%	0.0%	6.5%
Elementary/Secondary School	13.2%	0.0%	52.3%	0.0%	7.8%	18.7%
Health Agency (e.g. Hospital, Clinic)	10.3%	0.0%	4.7%	0.0%	88.2%	15.3%
Federal, State, or Local Government	8.8%	3.8%	8.4%	13.6%	2.0%	7.4%
Armed Services	1.5%	1.3%	0.0%	0.0%	0.0%	0.7%
NonProfit (Non-Government)	6.6%	2.5%	7.5%	0.0%	2.0%	4.8%
Other	5.1%	3.8%	8.4%	0.0%	0.0%	4.5%
Number Responding	136	80	107	44	51	418
4. Job Satisfaction						
Very Satisfied	21.9%	27.5%	33.7%	38.6%	37.3%	29.6%
Satisfied	45.3%	38.8%	42.3%	43.2%	37.3%	42.1%
Somewhat Satisfied	18.2%	21.3%	14.4%	11.4%	17.6%	17.1%
Somewhat Dissatisfied	7.3%	11.3%	4.8%	2.3%	3.9%	6.5%
Dissatisfied	5.1%	0.0%	3.8%	4.5%	2.0%	3.4%
Very Dissatisfied	2.2%	1.3%	1.0%	0.0%	2.0%	1.4%
Number Responding	137	80	104	44	51	416
5. Job in Field?						
Closely Related	33.1%	53.2%	56.1%	79.5%	84.3%	54.0%
Related	31.6%	35.4%	24.3%	18.2%	13.7%	26.9%
Unrelated (choice unknown)	1.5%	2.5%	1.9%	0.0%	0.0%	1.4%
Unrelated (by choice)	16.2%	6.3%	12.1%	0.0%	0.0%	9.6%
Unrelated (not by choice)	17.6%	2.5%	5.6%	2.3%	2.0%	8.2%
Number Responding	136	79	107	44	51	417
6. Timing of Securing First Job After Degree						
Held the Same Job While Enrolled	23.0%	21.3%	15.0%	22.7%	37.3%	22.3%
Secured Job by Graduation	14.1%	37.5%	15.0%	45.5%	25.5%	23.5%
Secured Job After Graduation(timing unknown)	0.7%	2.5%	0.9%	0.0%	0.0%	1.0%
Less than 1 Month After Graduation	12.6%	5.0%	9.3%	11.4%	7.8%	9.6%
1 to 3 Months After Graduation	24.4%	17.5%	29.9%	9.1%	11.8%	21.3%
3 to 6 Months After Graduation	13.3%	6.3%	13.1%	2.3%	11.8%	10.6%
6 to 9 Months After Graduation	6.7%	5.0%	13.1%	9.1%	3.9%	7.9%
More than 9 Months After Graduation	5.2%	5.0%	3.7%	0.0%	2.0%	3.8%
Number Responding	135	80	107	44	51	417

Southern Illinois University Edwardsville
Survey of 1998 Baccalaureate Graduates -- One Year Out
Survey Responses -- Part I
Employment Questions

School Detail, con't.	CAS	Bus	Educ	Engr	Nursing	Total
7. Annual Earned Income in Current Job Before Taxes						
Employed Full-Time						
Less Than \$15,000	5.7%	1.4%	10.4%	0.0%	2.5%	4.8%
\$15,000 to 19,999	19.0%	1.4%	22.1%	0.0%	2.5%	11.6%
\$20,000 to \$24,999	29.5%	17.8%	23.4%	0.0%	10.0%	19.6%
\$25,000 to \$29,999	21.0%	21.9%	39.0%	0.0%	30.0%	23.8%
\$30,000 to \$34,999	9.5%	26.0%	3.9%	26.8%	27.5%	16.1%
\$35,000 to \$39,999	5.7%	12.3%	1.3%	26.8%	17.5%	10.1%
\$40,000 or More	9.5%	19.2%	0.0%	46.3%	10.0%	14.0%
Number Responding	105	73	77	41	40	336
Mean Salary	\$26,265	\$31,451	\$22,350	\$40,308	\$30,066	\$28,661
Employed Part-Time						
Less Than \$5,000	20.0%	0.0%	0.0%	NA	0.0%	8.5%
5,000 to \$9,999	35.0%	50.0%	37.5%	50.0%	20.0%	36.2%
\$10,000 to \$14,999	25.0%	0.0%	37.5%	NA	20.0%	25.5%
\$15,000 to \$19,999	0.0%	0.0%	6.3%	NA	20.0%	4.3%
\$20,000 or More	20.0%	50.0%	18.8%	50.0%	40.0%	25.5%
Number Responding	20	4	16	2	5	47
Mean Salary	\$10,557	\$17,050	\$12,068	\$21,000	\$12,339	\$11,677
8. Bachelor's Degree Preparation for Job						
Very Well	15.0%	8.9%	34.3%	25.0%	22.9%	20.7%
Well	25.6%	35.4%	24.5%	40.9%	39.6%	30.5%
Adequately	38.3%	53.2%	35.3%	29.5%	31.3%	38.7%
Inadequately	12.0%	1.3%	3.9%	2.3%	4.2%	5.9%
Poorly	2.3%	1.3%	0.0%	2.3%	0.0%	1.2%
Very Poorly	6.8%	0.0%	2.0%	0.0%	2.1%	3.0%
Number Responding	133	79	102	44	48	406
9a. Primary Occupation						
Management	3.1%	16.0%	2.9%	9.1%	2.0%	6.0%
Business Operations	3.9%	8.0%	2.0%	2.3%	0.0%	3.5%
Financial Specialists	2.3%	37.3%	1.0%	0.0%	0.0%	8.0%
Computer Specialists	3.1%	12.0%	1.0%	13.6%	0.0%	5.0%
Mathematical Scientists and Technicians	1.6%	0.0%	0.0%	0.0%	0.0%	0.5%
Architects, Surveyors, and Cartographers	0.8%	0.0%	0.0%	2.3%	0.0%	0.5%
Engineers and Related Technicians	1.6%	1.3%	0.0%	70.5%	0.0%	8.5%
Life & Physical Scientists, and Technicians	9.3%	0.0%	0.0%	0.0%	0.0%	3.0%
Social Scientists	1.6%	1.3%	2.9%	0.0%	0.0%	1.5%
Health: Doctors	0.0%	0.0%	0.0%	0.0%	0.0%	0.0%
Health: Registered Nurses	0.0%	0.0%	0.0%	0.0%	95.9%	11.8%
Health: Theratpists	0.0%	0.0%	0.0%	0.0%	0.0%	0.0%
Health: Oth Practitnrs, Prof.s, & Suppt Wkrs	6.2%	0.0%	1.0%	0.0%	0.0%	2.3%
Community & Social Service	10.9%	0.0%	10.8%	0.0%	2.0%	6.5%
Legal: Attorneys/Judges	2.3%	0.0%	0.0%	0.0%	0.0%	0.8%
Legal: Legal Support Workers	0.0%	0.0%	0.0%	0.0%	0.0%	0.0%
Education: Early Childhood Teachers	1.6%	1.3%	15.7%	0.0%	0.0%	4.8%
Education: Elementary School Teachers	3.9%	0.0%	22.5%	0.0%	0.0%	7.0%
Education: Middle School Teachers	2.3%	0.0%	8.8%	0.0%	0.0%	3.0%
Education: Secondary School Teachers	4.7%	0.0%	2.0%	0.0%	0.0%	2.0%
Education: Special Education Teachers	0.0%	0.0%	7.8%	0.0%	0.0%	2.0%
Education: Other, except Administrators	7.8%	1.3%	7.8%	2.3%	0.0%	5.0%

continued

Southern Illinois University Edwardsville
Survey of 1998 Baccalaureate Graduates -- One Year Out
Survey Responses -- Part I
Employment Questions

School Detail, con't.	CAS	Bus	Educ	Engr	Nursing	Total
9a. continuation of Primary Occupation						
Library Occupations	0.0%	0.0%	0.0%	0.0%	0.0%	0.0%
Art and Design Workers	1.6%	0.0%	0.0%	0.0%	0.0%	0.5%
Entertainment, Performers, Sports & Related	2.3%	0.0%	0.0%	0.0%	0.0%	0.8%
Media and Communication Workers	7.8%	0.0%	0.0%	0.0%	0.0%	2.5%
Sales	3.9%	12.0%	2.9%	0.0%	0.0%	4.3%
Office & Administration	11.6%	2.7%	2.9%	0.0%	0.0%	5.0%
Protective Services	0.0%	0.0%	1.0%	0.0%	0.0%	0.3%
Food Preparation & Serving	1.6%	0.0%	2.0%	0.0%	0.0%	1.0%
Buildings & Grounds Maintenance	0.0%	0.0%	2.0%	0.0%	0.0%	0.5%
Personal Care and Service	1.6%	1.3%	1.0%	0.0%	0.0%	1.0%
Farming, Fishing, and Forestry	0.0%	0.0%	0.0%	0.0%	0.0%	0.0%
Construction & Extractive	0.0%	0.0%	0.0%	0.0%	0.0%	0.0%
Installation, Maintenance, & Repair	0.0%	2.7%	0.0%	0.0%	0.0%	0.5%
Production	0.8%	1.3%	2.0%	0.0%	0.0%	1.0%
Transportation and Material Moving	1.6%	1.3%	0.0%	0.0%	0.0%	0.8%
Military	0.8%	0.0%	0.0%	0.0%	0.0%	0.3%
Number Responding	129	75	102	44	49	399
9b. Industry						
Agriculture, Forestry, and Fishing	1.0%	0.0%	0.0%	0.0%	0.0%	0.3%
Mining	0.0%	0.0%	0.0%	0.0%	0.0%	0.0%
Utilities	0.0%	1.5%	0.0%	2.4%	0.0%	0.6%
Construction	0.0%	3.0%	0.0%	31.7%	0.0%	4.4%
Manufacturing	4.0%	13.6%	2.2%	17.1%	0.0%	6.5%
Wholesale Trade	1.0%	6.1%	0.0%	0.0%	0.0%	1.5%
Retail Trade	4.0%	6.1%	1.1%	0.0%	0.0%	2.6%
Transportation	2.0%	4.5%	0.0%	4.9%	0.0%	2.1%
Information	2.0%	3.0%	1.1%	2.4%	0.0%	1.8%
Finance & Insurance	4.0%	27.3%	0.0%	2.4%	0.0%	6.7%
Real Estate & Rental & Leasing	0.0%	0.0%	0.0%	0.0%	0.0%	0.0%
Professional, Scientific & Technical Services	20.8%	18.2%	1.1%	26.8%	0.0%	13.2%
Management of Companies & Enterprises	2.0%	6.1%	1.1%	0.0%	0.0%	2.1%
Admin & Suppt, Waste Mgmt & Remedtn Svcs	1.0%	0.0%	1.1%	0.0%	0.0%	0.6%
Educational Services	22.8%	1.5%	70.8%	4.9%	6.8%	27.0%
Health Care & Social Assistance	17.8%	0.0%	10.1%	0.0%	93.2%	19.9%
Arts, Entertainment & Recreation	8.9%	0.0%	1.1%	0.0%	0.0%	2.9%
Accommodations & Food Services	2.0%	0.0%	3.4%	0.0%	0.0%	1.5%
Other Services (except Public Admin)	5.0%	9.1%	5.6%	7.3%	0.0%	5.6%
Public Administration	2.0%	0.0%	1.1%	0.0%	0.0%	0.9%
Number Responding	101	66	89	41	44	341

9/8/00

Southern Illinois University Edwardsville
Survey of 1998 Baccalaureate Graduates -- One Year Out
Survey Responses -- Part II
Education Questions

School Detail	CAS	Bus	Educ	Engr	Nursing	Total
Number of Survey Respondents	162	84	124	45	52	467
10. Enrolled in College or University Since Degree?						
Yes, Full Time	24.2%	6.1%	11.4%	6.7%	5.8%	13.8%
Yes, Part Time	8.7%	11.0%	22.8%	28.9%	13.5%	15.3%
No	67.1%	82.9%	65.9%	64.4%	80.8%	70.8%
Number Responding	161	82	123	45	52	463
Pursuing or Have Completed an Additional Degree?						
11. Yes	94.3%	100.0%	78.6%	75.0%	70.0%	85.9%
No	5.7%	0.0%	21.4%	25.0%	30.0%	14.1%
Number Responding	53	14	42	16	10	135
The remaining questions in Part II were to be answered only by respondents who were pursuing or had completed another degree.	50	14	33	12	7	116
11b. Pursuing or Completed Which Degree?						
Associate's	2.0%	7.7%	0.0%	0.0%	0.0%	1.8%
Second Bachelor's	8.0%	0.0%	6.3%	8.3%	28.6%	7.9%
Academic Master's (MA, MS, MEd, etc)	42.0%	38.5%	56.3%	50.0%	42.9%	46.5%
Prof. Master's or Ed Specialist	24.0%	46.2%	28.1%	41.7%	14.3%	28.9%
Medicine (MD, OD)	4.0%	0.0%	0.0%	0.0%	0.0%	1.8%
Health Prof. (dentistry, pharmacy, etc.)	6.0%	0.0%	0.0%	0.0%	0.0%	2.6%
Theology/Divinity	0.0%	0.0%	0.0%	0.0%	0.0%	0.0%
Law (LLB, JD)	10.0%	0.0%	0.0%	0.0%	0.0%	4.4%
Doctorate (PhD, EdD, DA, DBA, etc.)	4.0%	0.0%	3.1%	0.0%	0.0%	2.6%
Other	0.0%	7.7%	6.3%	0.0%	14.3%	3.5%
Number Responding	50	13	32	12	7	114
12. How Well Bach. Degree Prepared You for Additional Degree						
Very Well	27.1%	23.1%	42.4%	25.0%	14.3%	30.1%
Well	31.3%	38.5%	33.3%	41.7%	28.6%	33.6%
Adequately	35.4%	38.5%	18.2%	33.3%	57.1%	31.9%
Inadequately	4.2%	0.0%	6.1%	0.0%	0.0%	3.5%
Poorly	2.1%	0.0%	0.0%	0.0%	0.0%	0.9%
Very Poorly	0.0%	0.0%	0.0%	0.0%	0.0%	0.0%
Number Responding	48	13	33	12	7	113

9/8/00

Southern Illinois University Edwardsville
Survey of 1998 Baccalaureate Graduates -- One Year Out
Survey Responses -- Part III
Satisfaction Questions

School Detail	CAS	Bus	Educ	Engr	Nursing	Total
Number of Survey Respondents	162	84	124	45	52	467
13. Present Attitude Towards the University						
Strongly Positive	14.6%	12.7%	14.6%	15.6%	14.3%	14.3%
Positive	43.3%	62.0%	48.0%	57.8%	65.3%	51.7%
Somewhat Positive	28.0%	17.7%	26.0%	22.2%	12.2%	23.4%
Somewhat Negative	9.6%	6.3%	10.6%	4.4%	8.2%	8.6%
Negative	1.9%	1.3%	0.8%	0.0%	0.0%	1.1%
Strongly Negative	2.5%	0.0%	0.0%	0.0%	0.0%	0.9%
Number Responding	157	79	123	45	49	453
14. Present Attitude Towards your Bachelor's Degree Major						
Strongly Positive	27.4%	25.3%	35.8%	35.6%	28.6%	30.2%
Positive	38.2%	51.9%	43.1%	55.6%	49.0%	44.8%
Somewhat Positive	21.7%	17.7%	17.1%	6.7%	18.4%	17.9%
Somewhat Negative	7.6%	3.8%	3.3%	2.2%	4.1%	4.9%
Negative	3.2%	1.3%	0.8%	0.0%	0.0%	1.5%
Strongly Negative	1.9%	0.0%	0.0%	0.0%	0.0%	0.7%
Number Responding	157	79	123	45	49	453

Southern Illinois University Edwardsville
Survey of 1998 Baccalaureate Graduates -- One Year Out
Survey Responses -- Part IV
Educational Practices Questions

School Detail	CAS	Bus	Educ	Engr	Nursing	Total
Number of Survey Respondents	162	84	124	45	52	467
15. Faculty in Major Were Accessible Outside of Class						
Very Often	30.9%	20.5%	25.8%	31.1%	34.6%	28.1%
Often	46.3%	53.0%	54.8%	44.4%	50.0%	50.0%
Sometimes	19.8%	24.1%	16.9%	24.4%	13.5%	19.5%
Infrequently	2.5%	2.4%	2.4%	0.0%	1.9%	2.1%
Never	0.6%	0.0%	0.0%	0.0%	0.0%	0.2%
Number Responding	162	83	124	45	52	466
16. In Major, Student was Expected to Work Cooperatively with Other Students						
Very Often	28.4%	66.3%	41.9%	24.4%	59.6%	41.8%
Often	30.9%	32.5%	46.0%	60.0%	30.8%	38.0%
Sometimes	30.2%	1.2%	11.3%	13.3%	9.6%	16.1%
Infrequently	9.3%	0.0%	0.8%	2.2%	0.0%	3.6%
Never	1.2%	0.0%	0.0%	0.0%	0.0%	0.4%
Number Responding	162	83	124	45	52	466
17. In Major, Faculty Encouraged Student to Challenge Ideas (student's, other students, and in readings & materials)						
Very Often	23.5%	22.9%	19.4%	11.1%	25.5%	21.3%
Often	32.1%	39.8%	48.4%	42.2%	43.1%	40.0%
Sometimes	30.2%	32.5%	26.6%	37.8%	23.5%	29.7%
Infrequently	13.6%	3.6%	5.6%	6.7%	5.9%	8.2%
Never	0.6%	1.2%	0.0%	2.2%	2.0%	0.9%
Number Responding	162	83	124	45	51	465
18. In Major, Faculty Used Appropriate Teaching Activities to Help Student Learn						
Very Often	27.2%	21.7%	29.0%	11.4%	27.5%	25.2%
Often	42.6%	60.2%	47.6%	52.3%	52.9%	49.1%
Sometimes	24.1%	16.9%	21.8%	31.8%	17.6%	22.2%
Infrequently	5.6%	1.2%	1.6%	4.5%	2.0%	3.2%
Never	0.6%	0.0%	0.0%	0.0%	0.0%	0.2%
Number Responding	162	83	124	44	51	464
19. In Major, Faculty had High Expectations for Quality Of Student Work						
Very Often	39.5%	37.3%	34.7%	24.4%	41.2%	36.6%
Often	38.3%	45.8%	54.0%	57.8%	49.0%	46.9%
Sometimes	20.4%	14.5%	9.7%	11.1%	3.9%	13.8%
Infrequently	1.2%	2.4%	1.6%	6.7%	5.9%	2.6%
Never	0.6%	0.0%	0.0%	0.0%	0.0%	0.2%
Number Responding	162	83	124	45	51	465
20. In Major, Faculty Provided Timely Feedback						
Very Often	28.4%	16.9%	26.0%	15.6%	21.6%	23.7%
Often	48.8%	66.3%	51.2%	55.6%	58.8%	54.3%
Sometimes	18.5%	16.9%	20.3%	24.4%	17.6%	19.2%
Infrequently	3.7%	0.0%	2.4%	4.4%	2.0%	2.6%
Never	0.6%	0.0%	0.0%	0.0%	0.0%	0.2%
Number Responding	162	83	123	45	51	464

Southern Illinois University Edwardsville
Survey of 1998 Baccalaureate Graduates -- One Year Out
Survey Responses -- Part IV
Educational Practices Questions

School Detail, cont'd	CAS	Bus	Educ	Engr	Nursing	Total
21. In Major, Faculty Encouraged Students' Questions and Discussion in Class						
Very Often	42.0%	43.4%	45.2%	26.7%	41.2%	41.5%
Often	40.7%	48.2%	47.6%	48.9%	45.1%	45.2%
Sometimes	13.0%	8.4%	5.6%	17.8%	11.8%	10.5%
Infrequently	4.3%	0.0%	1.6%	4.4%	2.0%	2.6%
Never	0.0%	0.0%	0.0%	2.2%	0.0%	0.2%
Number Responding	162	83	124	45	51	465
22. In Major, Student Spent Necessary Time and Energy to Come to Class Prepared						
Very Often	43.2%	28.9%	52.0%	31.8%	37.3%	41.3%
Often	38.9%	54.2%	39.0%	52.3%	49.0%	44.1%
Sometimes	16.0%	14.5%	8.9%	13.6%	13.7%	13.4%
Infrequently	1.2%	2.4%	0.0%	2.3%	0.0%	1.1%
Never	0.6%	0.0%	0.0%	0.0%	0.0%	0.2%
Number Responding	162	83	123	44	51	463

9/12/00

Southern Illinois University Edwardsville
Survey of 1998 Baccalaureate Graduates -- One Year Out
Survey Responses -- Part V
Program Quality Questions

School Detail	CAS	Bus	Educ	Engr	Nursing	Total
Number of Survey Respondents	162	84	124	45	52	467
28A. Quality of Major in Offering Sufficient Courses						
Excellent	29.8%	19.3%	33.3%	11.1%	45.1%	28.7%
Good	43.5%	63.9%	46.3%	55.6%	45.1%	49.2%
Fair	20.5%	16.9%	16.3%	26.7%	7.8%	17.9%
Poor	6.2%	0.0%	4.1%	6.7%	2.0%	4.1%
Number Responding	161	83	123	45	51	463
28B. Quality of Major in Offering Convenient Class Times						
Excellent	21.0%	12.0%	18.5%	8.9%	35.3%	19.1%
Good	45.1%	59.0%	48.4%	46.7%	49.0%	49.0%
Fair	25.3%	21.7%	26.6%	33.3%	9.8%	24.1%
Poor	8.6%	7.2%	6.5%	11.1%	5.9%	7.7%
Number Responding	162	83	124	45	51	465
28C. Quality of Major in Offering Logical Class Sequences						
Excellent	26.5%	19.3%	25.2%	13.3%	37.3%	24.8%
Good	47.5%	62.7%	54.5%	60.0%	51.0%	53.7%
Fair	22.2%	14.5%	17.1%	22.2%	9.8%	18.1%
Poor	3.7%	3.6%	3.3%	4.4%	2.0%	3.4%
Number Responding	162	83	123	45	51	464
29. Quality of Faculty in Major						
Excellent	41.4%	37.3%	38.2%	28.9%	45.1%	39.0%
Good	42.6%	51.8%	50.4%	46.7%	37.3%	46.1%
Fair	14.2%	10.8%	8.9%	24.4%	17.6%	13.6%
Poor	1.9%	0.0%	2.4%	0.0%	0.0%	1.3%
Number Responding	162	83	123	45	51	464
30. Grading Standards in Major Were:						
Too High	5.6%	6.0%	3.2%	0.0%	2.0%	4.1%
About Right	85.6%	85.5%	91.1%	91.1%	92.2%	88.3%
Too Low	8.8%	8.4%	5.6%	8.9%	5.9%	7.6%
Number Responding	160	83	124	45	51	463

9/12/00

Southern Illinois University Edwardsville
Survey of 1998 Baccalaureate Graduates -- One Year Out
Survey Responses -- Part VI
Educational Effectiveness Questions

School Detail	CAS	Bus	Educ	Engr	Nursing	Total
Number of Survey Respondents	162	84	124	45	52	467
26. Helpfulness of University Experiences in:						
A. Developing Critical Thinking Ability						
Extremely Helpful	16.8%	8.5%	11.4%	11.1%	5.8%	12.1%
Very Helpful	39.1%	53.7%	47.2%	51.1%	57.7%	47.1%
Moderately Helpful	33.5%	30.5%	28.5%	31.1%	32.7%	31.3%
Slightly Helpful	7.5%	7.3%	13.0%	4.4%	1.9%	8.0%
Not Helpful	3.1%	0.0%	0.0%	2.2%	1.9%	1.5%
Number Responding	161	82	123	45	52	463
B. Developing Sense of Ethics						
Extremely Helpful	11.1%	8.5%	10.6%	2.2%	9.6%	9.5%
Very Helpful	25.3%	34.1%	36.6%	33.3%	53.8%	33.8%
Moderately Helpful	43.8%	39.0%	30.9%	33.3%	23.1%	36.2%
Slightly Helpful	13.6%	11.0%	15.4%	22.2%	7.7%	13.8%
Not Helpful	6.2%	7.3%	6.5%	8.9%	5.8%	6.7%
Number Responding	162	82	123	45	52	464
C. Understanding People with Different Backgrounds, Habits, Values, Appearances and Abilities						
Extremely Helpful	25.3%	15.9%	22.8%	2.2%	19.2%	20.0%
Very Helpful	29.6%	41.5%	39.0%	28.9%	42.3%	35.6%
Moderately Helpful	29.0%	36.6%	22.8%	37.8%	26.9%	29.3%
Slightly Helpful	13.0%	4.9%	12.2%	11.1%	5.8%	10.3%
Not Helpful	3.1%	1.2%	3.3%	20.0%	5.8%	4.7%
Number Responding	162	82	123	45	52	464
D. Becoming a More Active Citizen						
Extremely Helpful	10.6%	3.7%	7.3%	4.4%	11.5%	8.0%
Very Helpful	21.1%	19.5%	19.5%	8.9%	25.0%	19.7%
Moderately Helpful	29.2%	42.7%	40.7%	35.6%	44.2%	36.9%
Slightly Helpful	19.3%	17.1%	19.5%	26.7%	13.5%	19.0%
Not Helpful	19.9%	17.1%	13.0%	24.4%	5.8%	16.4%
Number Responding	161	82	123	45	52	463
E. Improving Quality of Life (aside from financial benefits)						
Extremely Helpful	16.1%	6.1%	10.7%	2.2%	5.8%	10.4%
Very Helpful	33.5%	43.9%	32.0%	20.0%	42.3%	34.6%
Moderately Helpful	27.3%	32.9%	35.2%	51.1%	32.7%	33.3%
Slightly Helpful	13.0%	7.3%	13.9%	15.6%	13.5%	12.6%
Not Helpful	9.9%	9.8%	8.2%	11.1%	5.8%	9.1%
Number Responding	161	82	122	45	52	462
F. Developing Reasoning Skills						
Extremely Helpful	17.4%	6.1%	10.6%	15.6%	9.6%	12.5%
Very Helpful	42.9%	56.1%	43.9%	55.6%	46.2%	47.1%
Moderately Helpful	28.0%	30.5%	34.1%	13.3%	34.6%	29.4%
Slightly Helpful	8.7%	6.1%	9.8%	13.3%	7.7%	8.9%
Not Helpful	3.1%	1.2%	1.6%	2.2%	1.9%	2.2%
Number Responding	161	82	123	45	52	463

Southern Illinois University Edwardsville
Survey of 1998 Baccalaureate Graduates -- One Year Out
Survey Responses -- Part VI
Educational Effectiveness Questions

School Detail, con't.	CAS	Bus	Educ	Engr	Nursing	Total
G. Viewing Problems from Different Perspectives						
Extremely Helpful	23.6%	15.9%	15.6%	15.6%	11.5%	18.0%
Very Helpful	44.7%	52.4%	49.2%	46.7%	44.2%	47.4%
Moderately Helpful	21.7%	25.6%	23.8%	31.1%	30.8%	24.9%
Slightly Helpful	8.7%	3.7%	9.0%	4.4%	9.6%	7.6%
Not Helpful	1.2%	2.4%	2.5%	2.2%	3.8%	2.2%
Number Responding	161	82	122	45	52	462
H. Developing Ability to Solve Problems						
Extremely Helpful	20.4%	12.0%	13.0%	24.4%	11.5%	16.3%
Very Helpful	41.4%	50.6%	51.2%	44.4%	48.1%	46.7%
Moderately Helpful	28.4%	31.3%	23.6%	24.4%	28.8%	27.3%
Slightly Helpful	7.4%	6.0%	8.9%	6.7%	9.6%	7.7%
Not Helpful	2.5%	0.0%	3.3%	0.0%	1.9%	1.9%
Number Responding	162	83	123	45	52	465
I. Making Informed Decisions as a Citizen						
Extremely Helpful	14.3%	8.4%	13.0%	4.4%	5.8%	11.0%
Very Helpful	29.8%	41.0%	39.8%	33.3%	36.5%	35.6%
Moderately Helpful	36.0%	32.5%	27.6%	37.8%	34.6%	33.2%
Slightly Helpful	13.7%	14.5%	13.8%	20.0%	21.2%	15.3%
Not Helpful	6.2%	3.6%	5.7%	4.4%	1.9%	5.0%
Number Responding	161	83	123	45	52	464
J. Developing Writing Skills						
Extremely Helpful	28.0%	35.4%	19.5%	8.9%	11.5%	23.3%
Very Helpful	33.5%	41.5%	36.6%	37.8%	34.6%	36.3%
Moderately Helpful	23.6%	15.9%	30.1%	33.3%	38.5%	26.6%
Slightly Helpful	11.2%	6.1%	12.2%	13.3%	11.5%	10.8%
Not Helpful	3.7%	1.2%	1.6%	6.7%	3.8%	3.0%
Number Responding	161	82	123	45	52	463
K. Developing Oral Communication Skills						
Extremely Helpful	29.6%	38.6%	22.0%	4.4%	15.4%	25.2%
Very Helpful	29.6%	37.3%	41.5%	31.1%	40.4%	35.5%
Moderately Helpful	22.2%	19.3%	27.6%	28.9%	32.7%	24.9%
Slightly Helpful	14.2%	4.8%	8.1%	33.3%	5.8%	11.8%
Not Helpful	4.3%	0.0%	0.8%	2.2%	5.8%	2.6%
Number Responding	162	83	123	45	52	465
L. Developing Knowledge of Scientific and Technological Developments						
Extremely Helpful	16.0%	8.4%	12.3%	31.1%	13.5%	14.9%
Very Helpful	32.7%	34.9%	40.2%	46.7%	42.3%	37.5%
Moderately Helpful	26.5%	38.6%	32.0%	22.2%	34.6%	30.6%
Slightly Helpful	17.3%	15.7%	13.9%	0.0%	5.8%	13.1%
Not Helpful	7.4%	2.4%	1.6%	0.0%	3.8%	3.9%
Number Responding	162	83	122	45	52	464

Southern Illinois University Edwardsville
Survey of 1998 Baccalaureate Graduates -- One Year Out
Survey Responses -- Part VI
Educational Effectiveness Questions

School Detail, con't.	CAS	Bus	Educ	Engr	Nursing	Total
27. Undergraduate Education Broadened Interest Beyond Subjects in Major						
Strongly Agree	25.5%	14.5%	18.7%	11.1%	7.7%	18.3%
Agree	49.7%	53.0%	47.2%	33.3%	61.5%	49.4%
Neutral	18.0%	25.3%	28.5%	44.4%	25.0%	25.4%
Disagree	6.2%	7.2%	4.9%	8.9%	3.8%	6.0%
Strongly Disagree	0.6%	0.0%	0.8%	2.2%	1.9%	0.9%
Number Responding	161	83	123	45	52	464
28. Importance of College Education to:						
A. Personal Life						
Very Important	61.1%	56.6%	62.6%	51.1%	65.4%	60.2%
Moderately Important	27.2%	27.7%	24.4%	33.3%	25.0%	26.9%
Slightly Important	7.4%	6.0%	8.9%	11.1%	5.8%	7.7%
Not Important	4.3%	9.6%	4.1%	4.4%	3.8%	5.2%
Number Responding	162	83	123	45	52	465
B. Community Life						
Very Important	27.8%	20.5%	34.4%	20.0%	23.1%	26.9%
Moderately Important	39.5%	36.1%	37.7%	26.7%	46.2%	37.9%
Slightly Important	19.8%	28.9%	19.7%	37.8%	23.1%	23.5%
Not Important	13.0%	14.5%	8.2%	15.6%	7.7%	11.6%
Number Responding	162	83	122	45	52	464
C. Professional Life						
Very Important	60.5%	72.3%	73.2%	84.4%	80.8%	70.5%
Moderately Important	23.5%	21.7%	18.7%	11.1%	9.6%	19.1%
Slightly Important	8.6%	4.8%	3.3%	2.2%	5.8%	5.6%
Not Important	7.4%	1.2%	4.9%	2.2%	3.8%	4.7%
Number Responding	162	83	123	45	52	465
29. Quality of SIUE Education Relative to That of Friends at Other Schools						
Among the Best	5.0%	9.9%	12.4%	15.6%	9.8%	9.4%
Above Average	34.8%	44.4%	37.2%	42.2%	56.9%	40.3%
Average	50.3%	44.4%	43.8%	31.1%	31.4%	43.6%
Below Average	8.1%	1.2%	5.8%	11.1%	2.0%	5.9%
Among the Worst	1.9%	0.0%	0.8%	0.0%	0.0%	0.9%
Number Responding	161	81	121	45	51	459
30. Involvement Since Bachelor's Degree with:						
A. Organized, Formal, Career Related Learning (non-degree)						
Currently Involved	29.2%	25.6%	30.1%	37.8%	32.7%	30.0%
Have Been Involved	32.3%	34.1%	35.0%	31.1%	44.2%	34.6%
Never Involved	38.5%	40.2%	35.0%	31.1%	23.1%	35.4%
Number Responding	161	82	123	45	52	463
B. Personal Enrichment Studies						
Currently Involved	22.8%	18.8%	16.3%	17.8%	21.6%	19.7%
Have Been Involved	32.1%	31.3%	40.7%	31.1%	39.2%	34.9%
Never Involved	45.1%	50.0%	43.1%	51.1%	39.2%	45.3%
Number Responding	162	80	123	45	51	461

Southern Illinois University Edwardsville
Survey of 1998 Baccalaureate Graduates -- One Year Out
Survey Responses -- Part VI
Educational Effectiveness Questions

School Detail, con't.	CAS	Bus	Educ	Engr	Nursing	Total
C. Professional Activities or Organizations						
Currently Involved	34.2%	28.0%	40.5%	46.7%	38.5%	36.4%
Have Been Involved	29.2%	34.1%	31.4%	28.9%	28.8%	30.6%
Never Involved	36.6%	37.8%	28.1%	24.4%	32.7%	33.0%
Number Responding	161	82	121	45	52	461
D. Volunteer Work / Community Svc Activities or Organizations						
Currently Involved	25.3%	20.7%	26.0%	20.0%	17.3%	23.3%
Have Been Involved	33.3%	36.6%	44.7%	22.2%	40.4%	36.6%
Never Involved	41.4%	42.7%	29.3%	57.8%	42.3%	40.1%
Number Responding	162	82	123	45	52	464
E. Social / Recreational Activities or Organizations						
Currently Involved	36.0%	35.4%	36.9%	40.0%	26.9%	35.5%
Have Been Involved	34.2%	31.7%	37.7%	33.3%	42.3%	35.5%
Never Involved	29.8%	32.9%	25.4%	26.7%	30.8%	29.0%
Number Responding	161	82	122	45	52	462
F. Political Activities or Organizations						
Currently Involved	6.9%	4.9%	3.3%	2.2%	7.7%	5.2%
Have Been Involved	16.9%	12.3%	13.9%	8.9%	15.4%	14.3%
Never Involved	76.3%	82.7%	82.8%	88.9%	76.9%	80.4%
Number Responding	160	81	122	45	52	460
G. Religious / Ethical Activities or Organizations						
Currently Involved	32.1%	29.3%	31.7%	24.4%	34.6%	31.0%
Have Been Involved	17.9%	26.8%	25.2%	17.8%	28.8%	22.6%
Never Involved	50.0%	43.9%	43.1%	57.8%	36.5%	46.3%
Number Responding	162	82	123	45	52	464
H. Support or Participation in the Arts (music, drama, dance, art)						
Currently Involved	23.5%	13.4%	13.0%	6.7%	11.5%	15.9%
Have Been Involved	32.7%	23.2%	35.8%	15.6%	30.8%	30.0%
Never Involved	43.8%	63.4%	51.2%	77.8%	57.7%	54.1%
Number Responding	162	82	123	45	52	464

12/21/00