

**Southern Illinois University Edwardsville**  
**Survey of 1996 Baccalaureate Graduates -- One Year Out**

*Comparison of All Graduates to Survey Respondents*

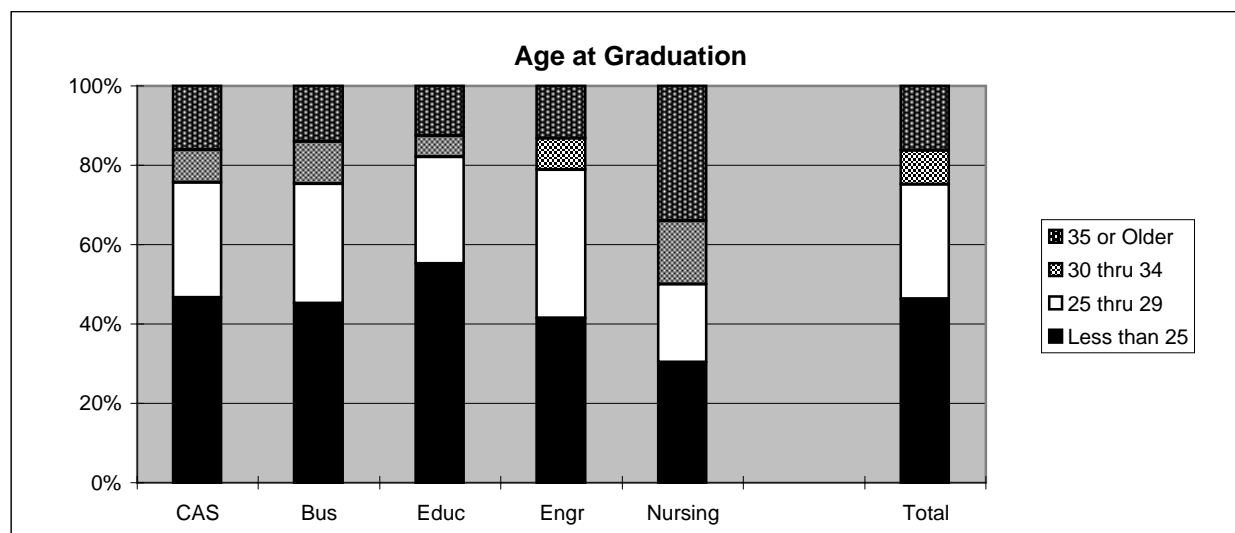
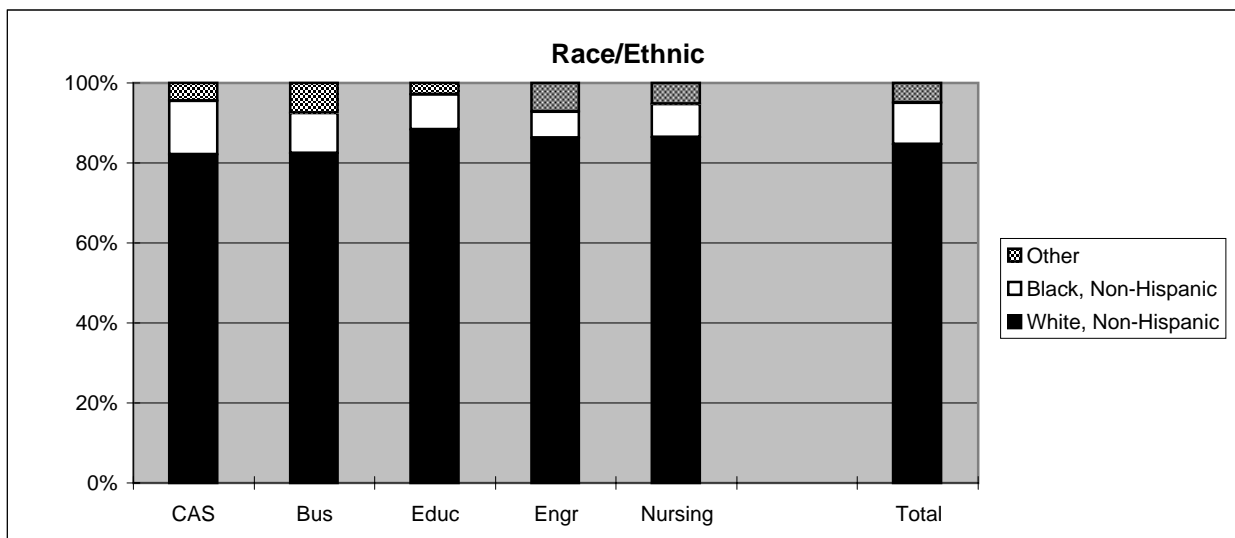
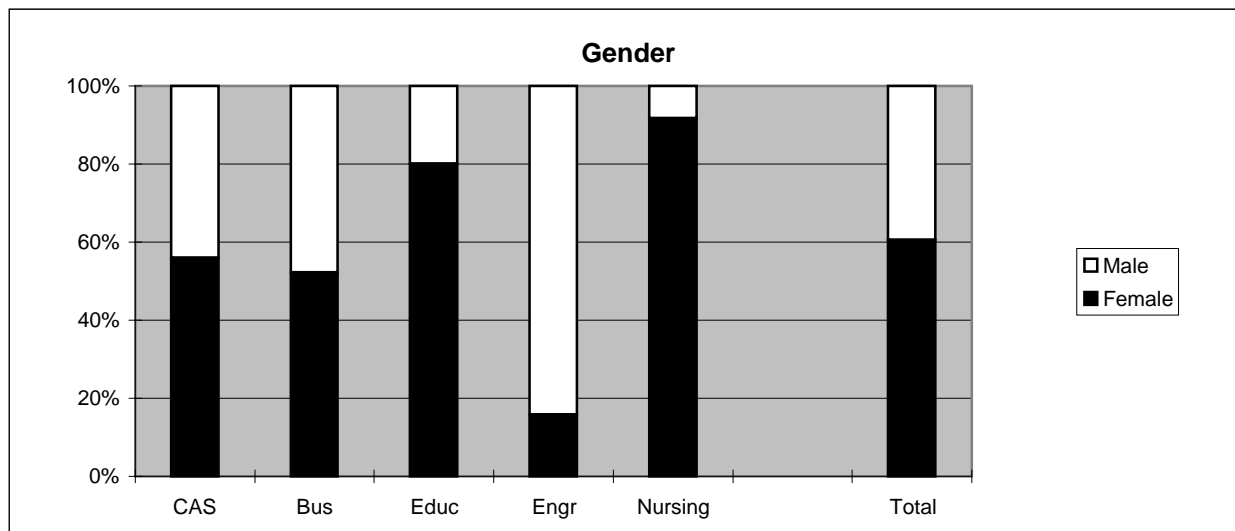
School Detail	All Graduates					
	CAS	Bus	Educ	Engr	Nursing	Total
<b>Total</b>	489	215	341	152	132	1329
Female	55.8%	52.1%	80.1%	15.8%	91.7%	60.4%
Male	44.2%	47.9%	19.9%	84.2%	8.3%	39.6%
Missing Data	0.0%	0.0%	0.0%	0.0%	0.0%	0.0%
White, Non-Hispanic	82.0%	82.3%	88.3%	86.2%	86.4%	84.6%
Black, Non-Hispanic	13.5%	10.2%	8.8%	6.6%	8.3%	10.5%
Asian/Pacific Islander	1.0%	0.9%	0.9%	1.3%	2.3%	1.1%
American Indian/Alaskan Native	0.6%	0.5%	0.3%	0.0%	1.5%	0.5%
Hispanic	1.8%	1.9%	1.2%	0.7%	1.5%	1.5%
Non-Resident Alien	1.0%	4.2%	0.6%	5.3%	0.0%	1.8%
Missing Data	0.0%	0.0%	0.0%	0.0%	0.0%	0.0%
Age at Graduation	range	range	range	range	range	range
	20 to 59	21 to 51	20 to 60	22 to 48	21 to 60	20 to 60
	median	median	median	median	median	median
	24.4	24.7	23.6	24.8	29	24.4
Bachelor of Science	69.5%	84.2%	95.0%	98.7%	100.0%	84.8%
Bachelor of Music	1.2%	0.0%	0.0%	0.0%	0.0%	0.5%
Bachelor of Arts	25.6%	0.0%	5.0%	1.3%	0.0%	10.8%
Bachelor of Fine Arts	2.2%	0.0%	0.0%	0.0%	0.0%	0.8%
Bachelor of Sci in Accountancy	0.0%	15.8%	0.0%	0.0%	0.0%	2.6%
Bachelor of Liberal Studies	1.4%	0.0%	0.0%	0.0%	0.0%	0.5%
Missing Data	0.0%	0.0%	0.0%	0.0%	0.0%	0.0%
Graduated Spring 1996	45.4%	51.2%	44.3%	55.3%	28.0%	45.4%
Graduated Summer 1996	28.6%	18.6%	19.9%	20.4%	3.0%	21.3%
Graduated Fall 1996	26.0%	30.2%	35.8%	24.3%	68.9%	33.3%
Missing Data	0.0%	0.0%	0.0%	0.0%	0.0%	0.0%
Matriculated as a New Freshman	40.5%	35.8%	31.1%	36.2%	19.7%	34.8%
Matriculated as a Transfer	56.9%	63.7%	67.2%	59.9%	80.3%	63.3%
Matriculated as a Non-Degree Student	2.7%	0.5%	1.8%	3.9%	0.0%	2.0%
Missing Data	0.0%	0.0%	0.0%	0.0%	0.0%	0.0%
Time to Degree for New Freshmen						
3 Years or Fewer	0.0%	0.0%	0.9%	0.0%	0.0%	0.2%
4 Years	12.6%	14.3%	19.8%	23.6%	19.2%	16.2%
5 Years	28.8%	28.6%	34.9%	18.2%	34.6%	29.2%
6 Years	21.7%	20.8%	17.0%	16.4%	3.8%	18.8%
7 Years	10.6%	9.1%	8.5%	18.2%	11.5%	10.8%
8 Years	6.1%	1.3%	9.4%	7.3%	3.8%	6.1%
9 Years	3.0%	3.9%	0.9%	1.8%	0.0%	2.4%
10 Years	2.5%	3.9%	1.9%	5.5%	3.8%	3.0%
11 Years or More	14.6%	18.2%	6.6%	9.1%	23.1%	13.2%
Missing Data	0.0%	0.0%	0.0%	0.0%	0.0%	0.0%
Time to Degree for Transfers						
2 or Fewer Years	11.5%	10.9%	14.4%	9.9%	26.4%	13.9%
3 Years	33.5%	21.9%	38.4%	36.3%	27.4%	32.5%
4 Years	22.3%	21.2%	21.0%	22.0%	25.5%	22.1%
5 Years	12.9%	10.9%	8.7%	6.6%	9.4%	10.3%
6 Years	7.2%	14.6%	5.7%	8.8%	1.9%	7.5%
7 Years	4.0%	5.1%	2.6%	4.4%	0.9%	3.4%
8 Years	1.1%	4.4%	2.6%	6.6%	0.9%	2.6%
9 Years	1.1%	0.7%	1.7%	0.0%	0.0%	1.0%
10 Years or More	6.5%	10.2%	4.8%	5.5%	7.5%	6.7%
Missing Data	0.0%	0.0%	0.0%	0.0%	0.0%	0.0%
Graduating GPA (4 point scale)	Mean	Mean	Mean	Mean	Mean	Mean
	3.039	2.864	3.233	2.898	3.156	3.056
	Std Dev	Std Dev	Std Dev	Std Dev	Std Dev	Std Dev
	0.496	0.470	0.442	0.486	0.416	0.488

**Southern Illinois University Edwardsville**  
**Survey of 1996 Baccalaureate Graduates -- One Year Out**

*Comparison of All Graduates to Survey Respondents, con't.*

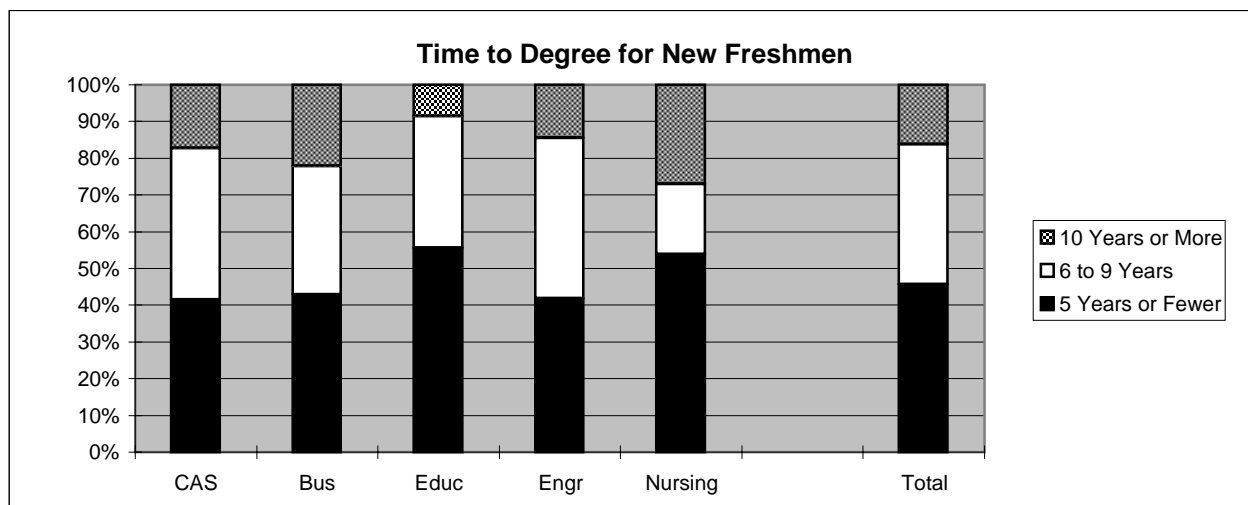
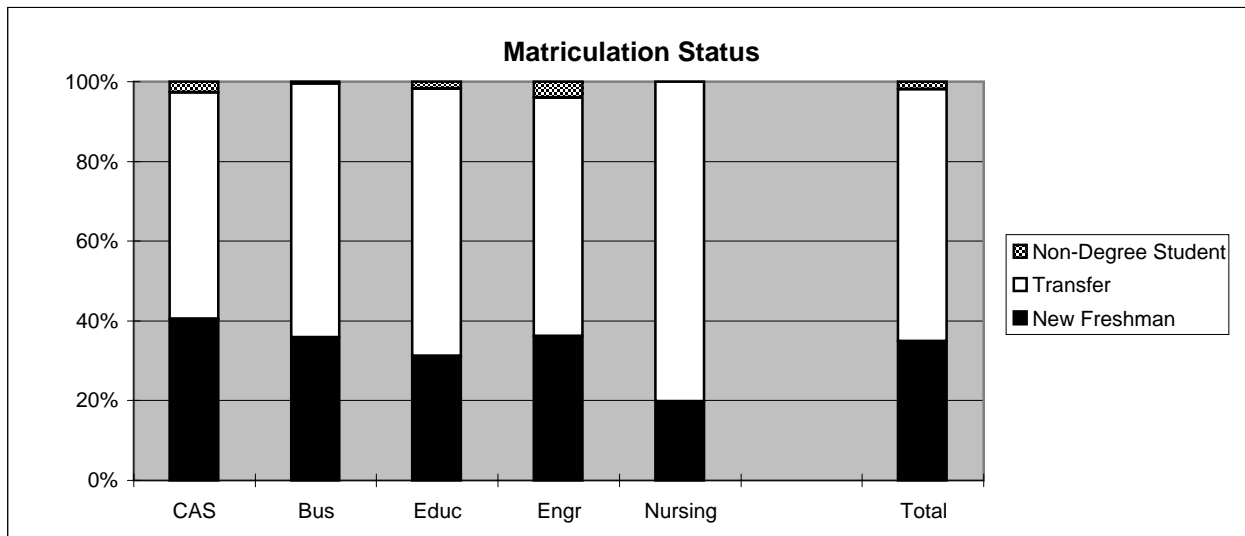
School Detail	All One Year Out Survey Respondents						
	CAS	Bus	Educ	Engr	Nursing	Total	
<b>Total</b>	206	87	141	60	56	550	
Female	60.2%	55.2%	86.5%	15.0%	92.9%	64.5%	
Male	39.8%	44.8%	13.5%	85.0%	7.1%	35.5%	
Missing Data	0.0%	0.0%	0.0%	0.0%	0.0%	0.0%	
White, Non-Hispanic	83.5%	90.8%	90.8%	88.3%	89.3%	87.6%	
Black, Non-Hispanic	12.6%	5.7%	5.0%	6.7%	8.9%	8.5%	
Asian/Pacific Islander	1.0%	1.1%	1.4%	1.7%	0.0%	1.1%	
American Indian/Alaskan Native	0.0%	0.0%	0.7%	0.0%	0.0%	0.2%	
Hispanic	2.9%	1.1%	1.4%	1.7%	1.8%	2.0%	
Non-Resident Alien	0.0%	1.1%	0.7%	1.7%	0.0%	0.5%	
Missing Data	0.0%	0.0%	0.0%	0.0%	0.0%	0.0%	
Age at Graduation	range	20 to 59	21 to 51	21 to 54	22 to 48	21 to 60	20 to 64
	median	24.7	24	24.1	25	28	24.7
Bachelor of Science	66.5%	86.2%	95.0%	98.3%	100.0%	83.8%	
Bachelor of Music	0.5%	0.0%	0.0%	0.0%	0.0%	0.2%	
Bachelor of Arts	29.6%	0.0%	5.0%	1.7%	0.0%	12.5%	
Bachelor of Fine Arts	1.5%	0.0%	0.0%	0.0%	0.0%	0.5%	
Bachelor of Sci in Accountancy	0.0%	13.8%	0.0%	0.0%	0.0%	2.2%	
Bachelor of Liberal Studies	1.9%	0.0%	0.0%	0.0%	0.0%	0.7%	
Missing Data	0.0%	0.0%	0.0%	0.0%	0.0%	0.0%	
Graduated Spring 1994	42.7%	54.0%	52.5%	51.7%	32.1%	46.9%	
Graduated Summer 1994	29.1%	13.8%	15.6%	20.0%	5.4%	19.8%	
Graduated Fall 1994	28.2%	32.2%	31.9%	28.3%	62.5%	33.3%	
Missing Data	0.0%	0.0%	0.0%	0.0%	0.0%	0.0%	
Matriculated as a New Freshman	39.3%	42.5%	25.5%	35.0%	16.1%	33.5%	
Matriculated as a Transfer	56.3%	57.5%	73.0%	61.7%	83.9%	64.2%	
Matriculated as a Non-Degree Student	4.4%	0.0%	1.4%	3.3%	0.0%	2.4%	
Missing Data	0.0%	0.0%	0.0%	0.0%	0.0%	0.0%	
Time to Degree for New Freshmen							
3 Years or Fewer	0.0%	0.0%	0.0%	0.0%	0.0%	0.0%	
4 Years	17.3%	18.9%	30.6%	23.8%	33.3%	21.7%	
5 Years	35.8%	29.7%	27.8%	19.0%	33.3%	31.0%	
6 Years	16.0%	21.6%	11.1%	14.3%	0.0%	15.2%	
7 Years	6.2%	2.7%	11.1%	19.0%	0.0%	7.6%	
8 Years	7.4%	2.7%	11.1%	9.5%	11.1%	7.6%	
9 Years	3.7%	5.4%	2.8%	0.0%	0.0%	3.3%	
10 Years	1.2%	2.7%	0.0%	4.8%	0.0%	1.6%	
11 Years or More	12.3%	16.2%	5.6%	9.5%	22.2%	12.0%	
Missing Data	0.0%	0.0%	0.0%	0.0%	0.0%	0.0%	
Time to Degree for Transfers							
2 or Fewer Years	9.5%	8.0%	19.4%	10.8%	36.2%	15.9%	
3 Years	31.9%	20.0%	42.7%	32.4%	27.7%	32.9%	
4 Years	25.9%	22.0%	10.7%	21.6%	27.7%	20.7%	
5 Years	14.7%	14.0%	6.8%	5.4%	4.3%	9.9%	
6 Years	5.2%	16.0%	5.8%	16.2%	0.0%	7.4%	
7 Years	3.4%	2.0%	1.9%	0.0%	0.0%	2.0%	
8 Years	0.0%	6.0%	3.9%	8.1%	2.1%	3.1%	
9 Years	1.7%	0.0%	2.9%	0.0%	0.0%	1.4%	
10 Years or More	7.8%	12.0%	5.8%	5.4%	2.1%	6.8%	
Missing Data	0.0%	0.0%	0.0%	0.0%	0.0%	0.0%	
Graduating GPA (4 point scale)	Mean	3.072	2.920	3.285	2.904	3.213	3.099
	Std Dev	0.493	0.466	0.457	0.462	0.410	0.487

# 1996 Baccalaureate Recipients Profile



# 1996 Baccalaureate Recipients

## *Profile*, con't.



**Southern Illinois University Edwardsville**  
**Survey of 1996 Baccalaureate Graduates -- One Year Out**  
**Survey Responses -- Part I**  
*Employment Questions*

<b>School Detail</b>	<b>CAS</b>	<b>Bus</b>	<b>Educ</b>	<b>Engr</b>	<b>Nursing</b>	<b>Total</b>
Number of Survey Respondents	206	87	141	60	56	550
1. Number Employed:						
Full-time	64.6%	61.0%	61.0%	91.7%	71.4%	71.6%
Part-time	20.4%	23.4%	23.4%	1.7%	25.0%	17.1%
Not, but Seeking	10.7%	7.8%	7.8%	6.7%	0.0%	7.3%
Not, not Seeking	4.4%	7.8%	7.8%	0.0%	3.6%	4.0%
Number Responding	206	141	141	60	56	550
<b>The remaining questions in Part I were to be answered only by respondents who were employed full-time or part-time.</b>						
	175	119	119	56	54	523
2. Place of Employment						
Illinois	55.6%	45.1%	80.7%	27.3%	64.6%	57.5%
Missouri	35.6%	50.0%	14.9%	58.2%	33.3%	35.5%
Other	8.8%	4.9%	4.4%	14.5%	2.1%	7.0%
Number Responding	160	82	114	55	48	459
3. Classification of Primary Employer						
Self-Employed or Private Practice	4.7%	3.6%	5.1%	0.0%	1.9%	3.7%
Business (Industrial, Commercial or Service)	39.5%	78.6%	17.9%	36.4%	0.0%	36.3%
Professional Firm (e.g., Engineering, Law)	6.4%	4.8%	0.9%	49.1%	0.0%	8.9%
College or University	7.0%	3.6%	3.4%	1.8%	0.0%	4.1%
Elementary/Secondary School	8.7%	0.0%	53.8%	0.0%	5.6%	16.8%
Health Agency (e.g. Hospital, Clinic)	10.5%	4.8%	6.8%	0.0%	90.7%	16.4%
Federal, State, or Local Government	6.4%	3.6%	4.3%	10.9%	0.0%	5.2%
Armed Services	3.5%	1.2%	0.0%	1.8%	0.0%	1.7%
NonProfit (Non-Government)	12.8%	0.0%	6.8%	0.0%	1.9%	6.4%
Other	0.6%	0.0%	0.9%	0.0%	0.0%	0.4%
Number Responding	172	84	117	55	54	482
4. Job Satisfaction						
Very Satisfied	25.7%	34.5%	26.1%	51.8%	31.5%	30.9%
Satisfied	54.3%	51.2%	52.9%	44.6%	59.3%	52.9%
Dissatisfied	14.9%	13.1%	19.3%	3.6%	7.4%	13.5%
Very Dissatisfied	5.1%	1.2%	1.7%	0.0%	1.9%	2.7%
Number Responding	175	84	119	56	54	488
5. Job in Field?						
Closely Related	37.7%	44.0%	53.8%	71.4%	79.6%	51.2%
Related	26.9%	40.5%	24.4%	25.0%	16.7%	27.3%
Unrelated *	35.4%	15.5%	21.8%	3.6%	3.7%	21.5%
Number Responding	175	84	119	56	54	488
If Unrelated Field, Is This By Choice?						
Yes	33.9%	33.3%	36.0%	100.0%	100.0%	36.9%
No	66.1%	66.7%	64.0%	0.0%	0.0%	63.1%
Number Responding	62	12	25	2	2	103

**Southern Illinois University Edwardsville**  
**Survey of 1996 Baccalaureate Graduates -- One Year Out**  
**Survey Responses -- Part I**  
*Employment Questions*

<b>School Detail, con't.</b>	<b>Bus</b>	<b>Bus</b>	<b>Educ</b>	<b>Engr</b>	<b>Nursing</b>	<b>Total</b>
<b>6. Timing of Securing First Job After Degree</b>						
Held the Same Job While Enrolled	33.3%	38.6%	17.6%	28.6%	40.7%	30.7%
Secured Job by Graduation	17.2%	18.1%	13.4%	25.0%	11.1%	16.7%
Secured Job After Graduation *	49.4%	43.4%	68.9%	46.4%	48.1%	52.7%
Number Responding	174	83	119	56	54	486
<b>If After Graduation, How Many Months After?</b>						
Less than 1 Month	19.8%	22.9%	12.2%	19.2%	15.4%	17.3%
Between 1 and 3 Months	38.4%	40.0%	52.4%	53.8%	46.2%	45.5%
Between 3 and 6 Months	22.1%	17.1%	25.6%	23.1%	26.9%	23.1%
Between 6 and 9 Months	14.0%	17.1%	8.5%	3.8%	7.7%	11.0%
More Than 9 Months	5.8%	2.9%	1.2%	0.0%	3.8%	3.1%
Number Responding	86	35	82	26	26	255
<b>7. Annual Earned Income in Current Job Before Taxes</b>						
<b>Employed Full-Time</b>						
Less Than \$15,000	14.3%	8.1%	26.0%	0.0%	2.6%	12.2%
\$15,000 to 19,999	27.0%	5.4%	31.2%	0.0%	10.3%	17.8%
\$20,000 to \$24,999	21.4%	25.7%	24.7%	1.9%	17.9%	19.7%
\$25,000 to \$29,999	17.5%	18.9%	11.7%	18.5%	30.8%	18.1%
\$30,000 to \$34,999	11.1%	28.4%	3.9%	37.0%	17.9%	17.6%
\$35,000 to \$39,999	3.2%	6.8%	1.3%	20.4%	2.6%	5.9%
\$40,000 or More	5.6%	6.8%	1.3%	22.2%	17.9%	8.6%
Number Responding	126	74	77	54	39	370
Mean Salary	\$22,540	\$28,517	\$18,645	\$35,078	\$29,295	\$25,467
<b>Employed Part-Time</b>						
Less Than \$5,000	17.6%	0.0%	20.0%	0.0%	0.0%	14.7%
5,000 to \$9,999	32.4%	0.0%	44.0%	0.0%	9.1%	30.7%
\$10,000 to \$14,999	23.5%	75.0%	16.0%	0.0%	9.1%	21.3%
\$15,000 to \$19,999	11.8%	0.0%	16.0%	0.0%	27.3%	14.7%
\$20,000 or More	14.7%	25.0%	4.0%	100.0%	54.5%	18.7%
Number Responding	34	4	25	1	11	75
Mean Salary	\$10,582	\$14,813	\$8,853	\$27,000	\$18,943	\$11,677
<b>8. Primary Occupation</b>						
Arts, Communication, and Entertainment	13.2%	2.4%	0.8%	0.0%	0.0%	5.3%
Business, Management, and Finance	16.1%	64.3%	4.2%	1.8%	0.0%	18.1%
Education	13.8%	1.2%	67.8%	0.0%	1.9%	21.8%
Engineering and Computer Science	2.9%	11.9%	1.7%	91.1%	0.0%	14.0%
Health	4.0%	2.4%	3.4%	0.0%	98.1%	13.6%
Office Support	3.4%	6.0%	7.6%	0.0%	0.0%	4.1%
Professional Specialties	2.9%	0.0%	0.8%	0.0%	0.0%	1.2%
Public and Social Services	20.7%	1.2%	8.5%	1.8%	0.0%	9.9%
Sales	6.9%	10.7%	2.5%	0.0%	0.0%	4.9%
Science, Mathematics and Agriculture	10.3%	0.0%	0.8%	0.0%	0.0%	3.9%
Transportation and Industry	5.7%	0.0%	1.7%	5.4%	0.0%	3.1%
Number Responding	174	84	118	56	54	486
<b>9. Bachelor's Degree Preparation for Job</b>						
Very Well	27.9%	22.6%	34.5%	29.6%	13.7%	27.2%
Adequately	53.9%	69.0%	51.3%	55.6%	82.4%	59.3%
Inadequately	18.2%	8.3%	14.2%	14.8%	3.9%	13.5%
Number Responding	165	84	113	54	51	467

\* The response marked with an asterisk leads to a related question which was to be answered only by those who selected the "asterisked" response.

**Southern Illinois University Edwardsville**  
**Survey of 1996 Baccalaureate Graduates -- One Year Out**  
**Survey Responses -- Part II**  
*Education Questions*

<b>School Detail</b>	<b>CAS</b>	<b>Bus</b>	<b>Educ</b>	<b>Engr</b>	<b>Nursing</b>	<b>Total</b>
Number of Survey Respondents	122	148	148	52	39	555
10. Enrolled in College or University Since Degree?						
Yes, Full Time	13.2%	6.9%	16.3%	1.7%	1.8%	10.6%
Yes, Part Time	14.1%	9.2%	7.8%	18.3%	12.5%	12.0%
No	72.7%	83.9%	75.9%	80.0%	85.7%	77.4%
Number Responding	205	87	141	60	56	549
<b>The remaining questions in Part II were to be answered only by respondents who had enrolled in a college or university since receiving their degree.</b>						
	56	14	34	12	8	124
11. Pursuing or Completed Another Degree?						
Associate's	1.9%	0.0%	0.0%	12.5%	0.0%	1.8%
Second Bachelor's	7.5%	28.6%	9.1%	0.0%	0.0%	9.6%
Academic Master's (MA, MS, MEd, etc)	56.6%	21.4%	69.7%	62.5%	50.0%	56.1%
Prof. Master's or Ed Specialist	17.0%	35.7%	15.2%	25.0%	16.7%	19.3%
Medicine (MD, OD)	3.8%	7.1%	0.0%	0.0%	0.0%	2.6%
Health Prof. (dentistry, pharmacy, etc.)	5.7%	0.0%	3.0%	0.0%	33.3%	5.3%
Theology/Divinity	0.0%	0.0%	0.0%	0.0%	0.0%	0.0%
Law (LLB, JD)	1.9%	0.0%	0.0%	0.0%	0.0%	0.9%
Doctorate (PhD, EdD, DA, DBA, etc.)	5.7%	0.0%	0.0%	0.0%	0.0%	2.6%
Other	0.0%	7.1%	3.0%	0.0%	0.0%	1.8%
Number Responding	53	14	33	8	6	114
12. How Well Bach. Degree Prepared You for Additional Degree						
Very Well	27.8%	61.5%	50.0%	25.0%	0.0%	36.3%
Adequately	63.0%	30.8%	46.9%	50.0%	100.0%	55.8%
Inadequately	9.3%	7.7%	3.1%	25.0%	0.0%	8.0%
Number Responding	54	13	32	8	6	113

**Southern Illinois University Edwardsville**  
**Survey of 1996 Baccalaureate Graduates -- One Year Out**  
**Survey Responses -- Part III**  
*Satisfaction Questions*

<b>School Detail</b>	<b>CAS</b>	<b>Bus</b>	<b>Educ</b>	<b>Engr</b>	<b>Nursing</b>	<b>Total</b>
Number of Survey Respondents	206	87	141	60	56	550
13. Present Attitude Towards the University						
Strongly Positive	13.9%	10.7%	18.2%	20.7%	7.1%	14.5%
Positive	74.3%	78.6%	65.0%	65.5%	78.6%	72.1%
Negative	8.4%	9.5%	14.6%	13.8%	10.7%	11.0%
Strongly Negative	3.5%	1.2%	2.2%	0.0%	3.6%	2.4%
Number Responding	202	84	137	58	56	537
14. Present Attitude Towards your Bachelor's Degree Major						
Strongly Positive	30.4%	21.2%	42.4%	44.8%	21.4%	32.7%
Positive	58.8%	70.6%	48.2%	48.3%	75.0%	58.5%
Negative	9.3%	8.2%	7.9%	6.9%	1.8%	7.7%
Strongly Negative	1.5%	0.0%	1.4%	0.0%	1.8%	1.1%
Number Responding	204	85	139	58	56	542
4/25/98						



**Southern Illinois University Edwardsville**  
**Survey of 1996 Baccalaureate Graduates -- One Year Out**  
**Survey Responses -- Part IV**  
*Faculty Questions*

<b>School Detail</b>	<b>CAS</b>	<b>Bus</b>	<b>Educ</b>	<b>Engr</b>	<b>Nursing</b>	<b>Total</b>
Number of Survey Respondents	206	87	141	60	56	550
15. Faculty in Major Encouraged Questions & Discussion in Class						
Strongly Agree	41.7%	31.0%	43.3%	31.7%	21.4%	37.2%
Agree	43.6%	52.9%	44.7%	51.7%	53.6%	47.3%
Neutral	11.8%	11.5%	7.8%	11.7%	16.1%	11.1%
Disagree	1.5%	3.4%	2.8%	3.3%	8.9%	3.1%
Strongly Disagree	1.5%	1.1%	1.4%	1.7%	0.0%	1.3%
Number Responding	204	87	141	60	56	548
16. Faculty in Major Were Accessible Outside Class						
Strongly Agree	33.2%	14.9%	22.7%	25.0%	14.3%	24.8%
Agree	45.9%	58.6%	56.0%	55.0%	55.4%	52.5%
Neutral	15.6%	19.5%	16.3%	13.3%	19.6%	16.6%
Disagree	3.9%	6.9%	4.3%	6.7%	8.9%	5.3%
Strongly Disagree	1.5%	0.0%	0.7%	0.0%	1.8%	0.9%
Number Responding	205	87	141	60	56	549
17. Faculty in Major Communicate Subject Matter Well						
Strongly Agree	34.1%	17.2%	31.2%	10.0%	12.7%	25.9%
Agree	46.8%	64.4%	53.9%	58.3%	58.2%	53.8%
Neutral	13.7%	11.5%	14.2%	26.7%	20.0%	15.5%
Disagree	3.9%	6.9%	0.0%	3.3%	7.3%	3.6%
Strongly Disagree	1.5%	0.0%	0.7%	1.7%	1.8%	1.1%
Number Responding	205	87	141	60	55	548
18. Rating of Faculty in Major (Considering All Their Activities)						
Excellent	26.8%	11.5%	29.1%	18.6%	5.5%	21.9%
Very Good	43.9%	41.4%	39.7%	30.5%	43.6%	41.0%
Good	17.1%	35.6%	24.1%	39.0%	29.1%	25.4%
Fair	8.8%	9.2%	6.4%	10.2%	18.2%	9.3%
Poor	3.4%	2.3%	0.7%	1.7%	3.6%	2.4%
Number Responding	205	87	141	59	55	547
4/24/98						

**Southern Illinois University Edwardsville**  
**Survey of 1996 Baccalaureate Graduates -- One Year Out**  
**Survey Responses -- Part V**  
*Advisement Questions*

<b>School Detail</b>	<b>CAS</b>	<b>Bus</b>	<b>Educ</b>	<b>Engr</b>	<b>Nursing</b>	<b>Total</b>
Number of Survey Respondents	206	87	141	60	56	550
19. Advisors in Major Effective on Future Course Offerings						
Strongly Agree	33.0%	18.4%	27.0%	26.7%	42.9%	29.4%
Agree	32.5%	44.8%	36.9%	33.3%	30.4%	35.5%
Neutral	16.7%	19.5%	18.4%	16.7%	10.7%	17.0%
Disagree	12.8%	13.8%	9.9%	20.0%	7.1%	12.4%
Strongly Disagree	3.0%	1.1%	5.7%	3.3%	0.0%	3.1%
Did Not Discuss	2.0%	2.3%	2.1%	0.0%	8.9%	2.6%
Number Responding	203	87	141	60	56	547
20. Advisors in Major Effective on Career Planning						
Strongly Agree	15.2%	10.3%	16.5%	10.0%	20.0%	14.7%
Agree	22.1%	17.2%	23.0%	23.3%	20.0%	21.5%
Neutral	26.0%	29.9%	27.3%	33.3%	29.1%	28.1%
Disagree	17.2%	26.4%	19.4%	15.0%	12.7%	18.5%
Strongly Disagree	8.3%	5.7%	10.8%	5.0%	0.0%	7.3%
Did Not Discuss	11.3%	10.3%	2.9%	13.3%	18.2%	9.9%
Number Responding	204	87	139	60	55	545
21. Advisors in Major Effective on Degree Requirements						
Strongly Agree	39.5%	36.8%	32.1%	41.7%	46.4%	38.1%
Agree	33.2%	36.8%	39.3%	28.3%	33.9%	34.9%
Neutral	14.6%	14.9%	10.7%	13.3%	12.5%	13.3%
Disagree	7.8%	8.0%	12.1%	13.3%	5.4%	9.3%
Strongly Disagree	4.4%	3.4%	5.7%	3.3%	0.0%	4.0%
Did Not Discuss	0.5%	0.0%	0.0%	0.0%	1.8%	0.4%
Number Responding	205	87	140	60	56	548
22. Advisors in Major Effective on Grad/Prof School Entry Requirement:						
Strongly Agree	9.3%	8.0%	10.1%	5.0%	12.7%	9.2%
Agree	20.0%	13.8%	14.4%	11.7%	12.7%	15.9%
Neutral	22.0%	23.0%	20.9%	23.3%	25.5%	22.3%
Disagree	13.2%	12.6%	24.5%	15.0%	25.5%	17.4%
Strongly Disagree	7.8%	6.9%	10.1%	6.7%	1.8%	7.5%
Did Not Discuss	27.8%	35.6%	20.1%	38.3%	21.8%	27.7%
Number Responding	205	87	139	60	55	546
23. Advisors in Major Usually Available When Needed						
Strongly Agree	30.9%	5.7%	17.1%	21.7%	23.2%	21.6%
Agree	46.6%	50.6%	39.3%	51.7%	55.4%	46.8%
Neutral	15.7%	32.2%	23.6%	21.7%	17.9%	21.2%
Disagree	3.9%	9.2%	17.1%	3.3%	3.6%	8.0%
Strongly Disagree	2.9%	2.3%	2.9%	1.7%	0.0%	2.4%
Number Responding	204	87	140	60	56	547

**Southern Illinois University Edwardsville**  
**Survey of 1996 Baccalaureate Graduates -- One Year Out**  
**Survey Responses -- Part VI**  
*Program Quality Questions*

<b>School Detail</b>	<b>CAS</b>	<b>Bus</b>	<b>Educ</b>	<b>Engr</b>	<b>Nursing</b>	<b>Total</b>
Number of Survey Respondents	122	148	148	52	39	555
24A. Quality of Major in Offering						
Sufficient Courses						
Excellent	33.0%	12.6%	24.8%	16.9%	16.4%	24.3%
Good	45.6%	47.1%	52.5%	49.2%	60.0%	49.5%
Fair	16.5%	32.2%	18.4%	25.4%	23.6%	21.2%
Poor	4.9%	8.0%	4.3%	8.5%	0.0%	5.1%
Number Responding	206	87	141	59	55	548
24B. Quality of Major in Offering						
Convenient Class Times						
Excellent	20.0%	11.5%	17.7%	15.0%	12.5%	16.8%
Good	46.3%	37.9%	44.0%	38.3%	42.9%	43.2%
Fair	27.3%	34.5%	29.1%	31.7%	33.9%	30.1%
Poor	6.3%	16.1%	9.2%	15.0%	10.7%	10.0%
Number Responding	205	87	141	60	56	549
24C. Quality of Major in Offering						
Logical Class Sequences						
Excellent	28.4%	14.9%	25.5%	21.7%	10.7%	23.0%
Good	52.0%	49.4%	51.1%	58.3%	58.9%	52.7%
Fair	15.2%	32.2%	18.4%	13.3%	25.0%	19.5%
Poor	4.4%	3.4%	5.0%	6.7%	5.4%	4.7%
Number Responding	204	87	141	60	56	548
25. Grading Standards in Major Were:						
Too High	3.4%	5.7%	2.9%	5.2%	8.9%	4.4%
About Right	85.9%	87.4%	93.6%	94.8%	89.3%	89.4%
Too Low	10.7%	6.9%	3.6%	0.0%	1.8%	6.2%
Number Responding	206	87	140	58	56	547

4/27/98

**Southern Illinois University at Edwardsville**  
**Survey of 1994 Baccalaureate Graduates--One Year Out**  
**Survey Responses -- Part VII**  
*Undergraduate Experience Questions*

<b>School Detail</b>	<b>CAS</b>	<b>Educ</b>	<b>Educ</b>	<b>Engr</b>	<b>Nursing</b>	<b>Total</b>
Number of Survey Respondents	206	87	141	60	56	550
26A. Undergrad Education Helped Develop Reading Skills						
Strongly Agree	17.6%	6.9%	10.7%	10.0%	5.4%	12.0%
Agree	33.7%	36.8%	36.4%	31.7%	37.5%	35.0%
Neutral	36.6%	39.1%	40.7%	45.0%	46.4%	40.0%
Disagree	9.3%	16.1%	10.7%	11.7%	10.7%	11.1%
Strongly Disagree	2.9%	1.1%	1.4%	1.7%	0.0%	1.8%
Number Responding	205	87	140	60	56	548
26B. Undergrad Education Helped Develop Reasoning Skills						
Strongly Agree	26.7%	23.0%	20.6%	33.3%	14.3%	24.0%
Agree	49.0%	59.8%	53.9%	56.7%	60.7%	54.0%
Neutral	18.9%	10.3%	19.1%	8.3%	16.1%	16.2%
Disagree	4.9%	6.9%	5.7%	0.0%	7.1%	5.1%
Strongly Disagree	0.5%	0.0%	0.7%	1.7%	1.8%	0.7%
Number Responding	206	87	141	60	56	550
26C. Undergrad Education Helped Develop Broader Perspectives on Problems						
Strongly Agree	38.8%	23.0%	25.9%	46.7%	33.9%	33.4%
Agree	43.2%	64.4%	54.0%	40.0%	51.8%	49.8%
Neutral	13.6%	8.0%	17.3%	10.0%	10.7%	13.0%
Disagree	3.9%	4.6%	2.9%	1.7%	3.6%	3.5%
Strongly Disagree	0.5%	0.0%	0.0%	1.7%	0.0%	0.4%
Number Responding	206	87	139	60	56	548
26D. Undergrad Education Helped Develop Writing Skills						
Strongly Agree	30.6%	26.4%	22.3%	21.7%	8.9%	24.6%
Agree	43.7%	47.1%	49.6%	46.7%	50.0%	46.7%
Neutral	18.4%	16.1%	24.5%	23.3%	30.4%	21.4%
Disagree	4.9%	9.2%	3.6%	5.0%	8.9%	5.7%
Strongly Disagree	2.4%	1.1%	0.0%	3.3%	1.8%	1.6%
Number Responding	206	87	139	60	56	548
26E. Undergrad Education Helped Develop Ability to Make Informed Decisions						
Strongly Agree	25.7%	13.8%	12.9%	16.7%	14.3%	18.4%
Agree	40.3%	48.3%	52.1%	41.7%	51.8%	45.9%
Neutral	28.6%	34.5%	27.9%	36.7%	21.4%	29.5%
Disagree	4.4%	1.1%	6.4%	3.3%	12.5%	5.1%
Strongly Disagree	1.0%	2.3%	0.7%	1.7%	0.0%	1.1%
Number Responding	206	87	140	60	56	549
27. Undergrad Education Broadened Interest Beyond Subjects in Major						
Strongly Agree	29.9%	16.3%	21.4%	15.0%	12.5%	22.2%
Agree	50.0%	60.5%	47.9%	40.0%	55.4%	50.5%
Neutral	14.7%	18.6%	19.3%	30.0%	23.2%	19.0%
Disagree	3.9%	4.7%	11.4%	10.0%	7.1%	7.0%
Strongly Disagree	1.5%	0.0%	0.0%	5.0%	1.8%	1.3%
Number Responding	204	86	140	60	56	546
28. Quality of SIUE Education Relative to That of Friends at Other Schools						
Among the Best	7.8%	8.1%	8.0%	10.0%	7.3%	8.1%
Above Average	30.4%	32.6%	29.9%	30.0%	29.1%	30.4%
Average	55.4%	50.0%	56.9%	51.7%	52.7%	54.2%
Below Average	4.4%	9.3%	5.1%	8.3%	10.9%	6.5%
Among the Worst	2.0%	0.0%	0.0%	0.0%	0.0%	0.7%
Number Responding	204	86	137	60	55	542
4/27/98						