

Southern Illinois University at Edwardsville
Survey of 1994 Baccalaureate Graduates -- Nine Years Out

Survey Results for Schools

April 2004

Survey Administered By
The Office of Undergraduate Assessment and Program Review

Survey Results Compiled By
The Office of Institutional Research and Studies

Southern Illinois University at Edwardsville
Survey of 1994 Baccalaureate Graduates -- Nine Years Out

Contents

Introduction

Methodology

Survey Population and Respondents

Charts: *1994 Baccalaureate Recipients, Profile*

- *Gender*
- *Race/Ethnic*
- *Age at Graduation*
- *Matriculation Status*
- *Time to Degree for New Freshmen*
- *Time to Degree for New Transfers*

Table: *Comparison of All Graduates to Survey Respondents*

Survey Results

Charts: *1994 Baccalaureate Graduates Nine Years Out, Satisfaction*

- *Present Attitude Toward the University*
- *Present Attitude Towards Alumni's Bachelor's Degree Major*
- *Quality of SIUE Education Relative to That of Friends at Other Schools*

1994 Baccalaureate Graduates Nine Years Out, Additional Education

- *Additional Postsecondary Degree?*
- *Currently Pursuing a Degree?*
- *How Well Bachelor's Degree Prepared Alumni for Additional Degree*

1994 Baccalaureate Graduates Nine Years Out, Employment Status

- *Employment Status*
- *Place of Employment*
- *Job in Field Related to Major?*
- *Job Satisfaction*
- *How Well Bachelor's Degree Prepared Alum for Current Career Path*
- *Mean Salary of Alumni Employed Full Time*

Tables: *Part I Employment Questions*

Part II Education Questions

Part III Satisfaction Questions

Part IV Educational Effectiveness Questions

Questionnaire

Southern Illinois University Edwardsville Survey of 1994 Baccalaureate Graduates -- Nine Years Out

Introduction

This nine-year out baccalaureate survey was done to provide data for the University's undergraduate program reviews and other planning uses and to participate in the Illinois Board of Higher Education Baccalaureate Graduates' Follow-up System.

IBHE Survey Schedule and Population Definition		
Survey Year	Survey Type	Survey Group
1992	One-Year Out Survey	Class of '91
1993	Five-Year Out Survey	Class of '88
1994	Ten-Year Out Survey	Class of '84
1995	One-Year Out Survey	Class of '94
1996	Five-Year Out Survey	Class of '91
1997	Nine-Year Out Survey	Class of '88
1998	One-Year Out Survey	Class of '97
1999	Five-Year Out Survey	Class of '94
2000	Nine-Year Out Survey	Class of '91
2001	One-Year Out Survey	Class of '00
2002	Five-Year Out Survey	Class of '97
2003	Nine-Year Out Survey	Class of '94

After the first six years, the surveys were reviewed and changed, modifying some questions and value scales, and adding some additional questions. (See Appendix B for more detailed information on the "Public University Baccalaureate Graduates' Follow-Up Surveys.")

The current survey was administered during the spring of 2003 to 1994 baccalaureate graduates of SIUE. The questionnaire includes 15 questions common to all public universities. These are the first 15 questions in the survey, forming Parts I, II, III, and IV (Employment Questions, Education Questions, Satisfaction Questions, and Educational Effectiveness Questions). SIUE added to these one item on industry of employment, seven additional indicators on educational effectiveness, and five additional questions on educational effectiveness. (A questionnaire is included in Appendix A.)

Methodology

The survey questionnaire and a cover letter were adapted from the questionnaire and letter developed for previous surveys. SIUE Alumni Services provided current addresses for calendar year 1994 graduates as determined from institutional records.

On April 28, 2003, approximately two weeks before the surveys were to be mailed, a postcard was sent to the 1,116 1994 baccalaureate graduates for whom addresses were available, notifying the alumni that they would be receiving a questionnaire and encouraging them to complete and return the survey.

Surveys were mailed first class on May 12, 2003. Each envelope included a cover letter, a

questionnaire, and a postage-paid, pre-addressed return envelope. Each questionnaire was stamped with a sequential, identifying number which was also stamped on a listing of the graduates (this aided in identifying the surveys when returned). On May 27, approximately two weeks after the survey was mailed and when the rate of survey returns had decreased, a follow-up postcard requesting that the survey be returned was mailed to each student who had not returned his or her survey.

Returned surveys began arriving on May 15st and continued through the summer and fall, with a few arriving as late as October 2003. As the surveys came in, each was matched with the corresponding stamped listing. The students' names were then checked against the alphabetic list of alumni to verify (or, if the alumnus chose not to provide the identification number, to obtain) the student identification number. The student identification number was the key which allowed merging of survey data with administrative records (e.g., biographic, graduation, matriculation, and enrollment information).

Southern Illinois University Edwardsville
Survey of 1994 Baccalaureate Graduates -- Nine Years Out

Survey Population and Respondents

	Number of Graduates
1994 Baccalaureate Degrees	1,292
Less persons who received 2 baccalaureate degrees	(3)
1994 Baccalaureate Graduates	1,289
Less Graduates with No Address Available *	(173)
Graduates Surveyed	1,116
Less Non-Deliverable Surveys	21
Less Non-Responding Graduates	691
Survey Respondents	404
Gross Response Rate (Respondents/Total Surveyed)	36.20%
Adjusted Response Rate (Respondents/Delivered Surveys)	36.89%

* Includes deceased alumni, foreign addresses and known bad addresses.

5/3/2004

Southern Illinois University at Edwardsville
Survey of 1994 Baccalaureate Graduates -- Nine Years Out

Comparison of All Graduates to Survey Respondents

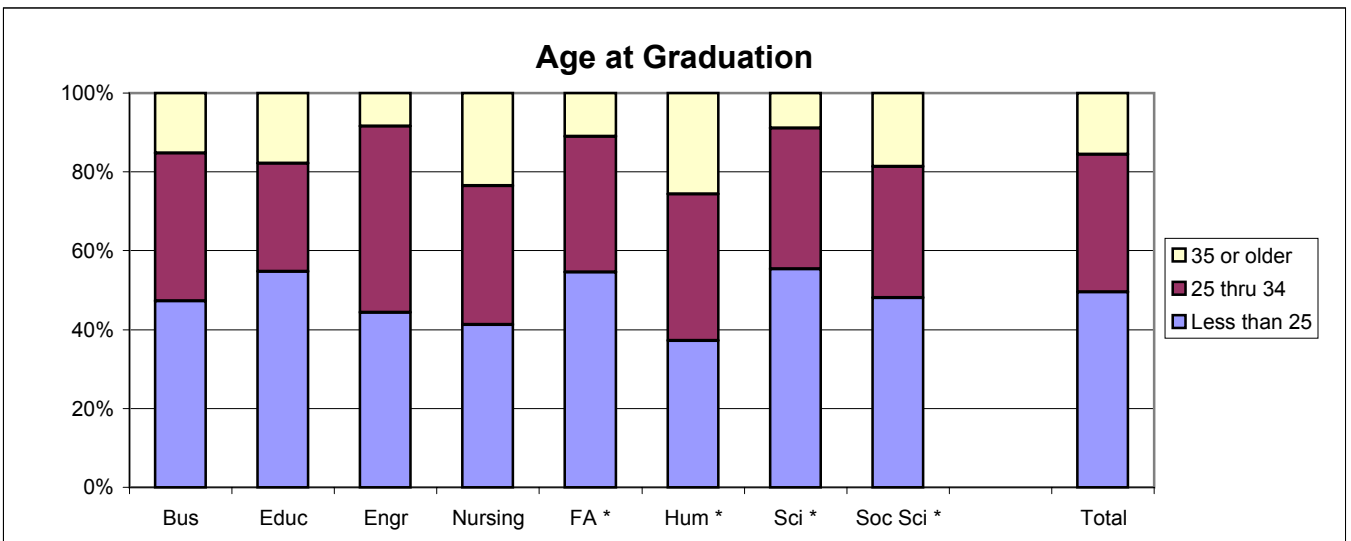
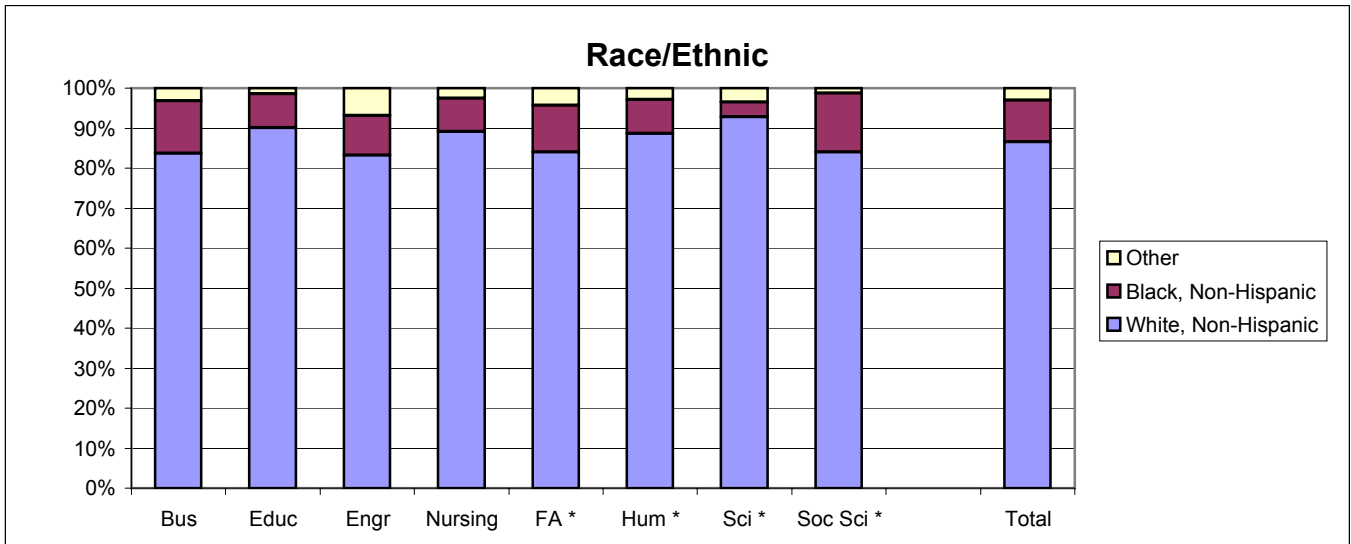
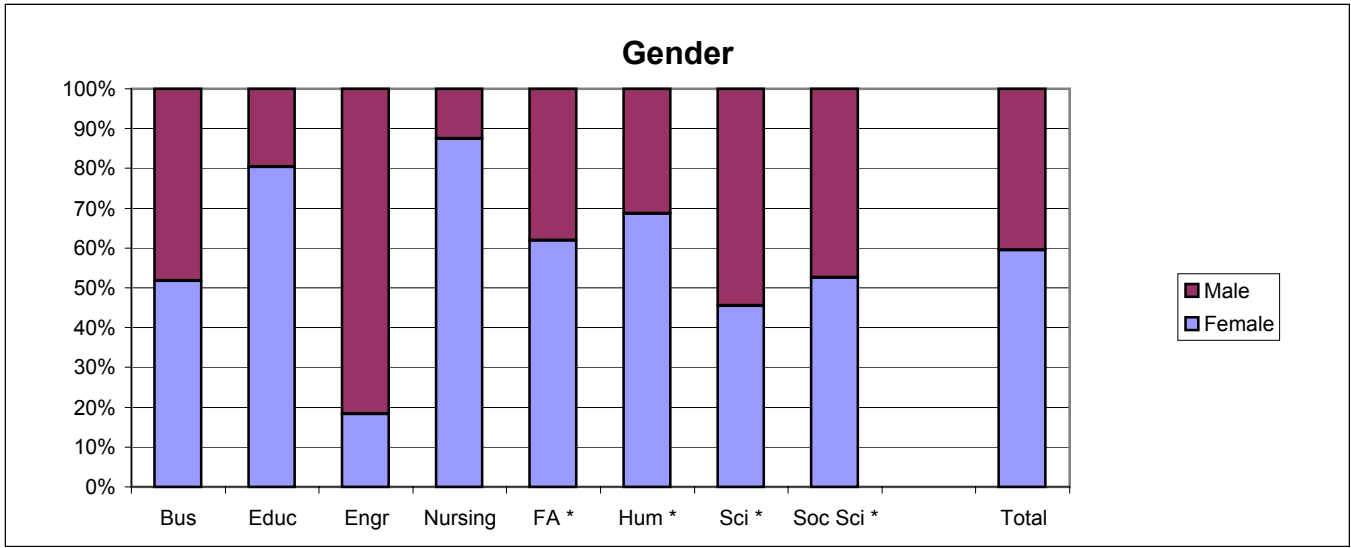
School Detail		BUS	EDUC	ENGR	NURS	FA *	HUM*	SCI*	SOC S*	Total
Total		282	291	131	119	163	35	112	156	1289
Female		51.8%	80.4%	18.3%	87.4%	62.0%	68.6%	45.5%	52.6%	59.4%
Male		48.2%	19.6%	81.7%	12.6%	38.0%	31.4%	54.5%	47.4%	40.6%
Missing Data		0.0%	0.0%	0.0%	0.0%	0.0%	0.0%	0.0%	0.0%	0.0%
White, Non-Hispanic		83.7%	90.0%	83.2%	89.1%	84.0%	88.6%	92.9%	84.0%	86.6%
Black, Non-Hispanic		13.1%	8.6%	9.9%	8.4%	11.7%	8.6%	3.6%	14.7%	10.4%
Asian/Pacific Islander		0.7%	0.3%	0.8%	0.8%	0.6%	0.0%	2.7%	0.6%	0.8%
American Indian/Alaskan Native		0.7%	0.0%	0.0%	0.8%	0.6%	2.9%	0.0%	0.0%	0.4%
Hispanic		0.7%	1.0%	1.5%	0.8%	0.6%	0.0%	0.9%	0.6%	0.9%
Non-Resident Alien		1.1%	0.0%	4.6%	0.0%	2.5%	0.0%	0.0%	0.0%	1.0%
Missing Data		0.0%	0.0%	0.0%	0.0%	0.0%	0.0%	0.0%	0.0%	0.0%
Age at Graduation	range	20 to 55	21 to 52	21 to 53	21 to 59	21 to 57	21 to 53	21 to 48	22 to 64	20 to 64
	median	24.3	23.5	24.6	24.9	23.7	25.8	23.6	24.4	24.1
Bachelor of Science		87.9%	94.8%	100.0%	100.0%	60.7%	2.9%	88.4%	67.3%	83.6%
Bachelor of Music		0.0%	0.0%	0.0%	0.0%	12.3%	0.0%	0.0%	0.0%	1.6%
Bachelor of Arts		0.0%	5.2%	0.0%	0.0%	22.7%	97.1%	11.6%	25.6%	10.8%
Bachelor of Fine Arts		0.0%	0.0%	0.0%	0.0%	4.3%	0.0%	0.0%	0.0%	0.5%
Bachelor of Sci in Accountancy		12.1%	0.0%	0.0%	0.0%	0.0%	0.0%	0.0%	0.0%	2.6%
Bachelor of Liberal Studies		0.0%	0.0%	0.0%	0.0%	0.0%	0.0%	0.0%	7.1%	0.9%
Missing Data		0.0%	0.0%	0.0%	0.0%	0.0%	0.0%	0.0%	0.0%	0.0%
Graduated Spring 1994		41.1%	50.2%	45.8%	35.3%	46.0%	51.4%	58.0%	41.0%	45.5%
Graduated Summer 1994		27.3%	17.5%	18.3%	2.5%	31.3%	25.7%	18.8%	34.0%	22.4%
Graduated Fall 1994		31.6%	32.3%	35.9%	62.2%	22.7%	22.9%	23.2%	25.0%	32.1%
Missing Data		0.0%	0.0%	0.0%	0.0%	0.0%	0.0%	0.0%	0.0%	0.0%
Matriculated as a New Freshman		40.4%	36.1%	28.2%	27.7%	42.9%	57.1%	42.0%	36.5%	37.5%
Matriculated as a Transfer		58.5%	62.5%	68.7%	71.4%	54.6%	40.0%	55.4%	60.3%	60.6%
Matriculated as a Non-Degree Student		1.1%	1.4%	3.1%	0.8%	2.5%	2.9%	2.7%	3.2%	1.9%
Missing Data		0.0%	0.0%	0.0%	0.0%	0.0%	0.0%	0.0%	0.0%	0.0%
Time to Degree for New Freshmen										
3 Years or Fewer		0.0%	1.9%	0.0%	0.0%	1.4%	0.0%	0.0%	0.0%	0.6%
4 Years		15.8%	26.7%	13.5%	27.3%	12.9%	15.0%	25.5%	10.5%	18.6%
5 Years		28.1%	29.5%	32.4%	24.2%	24.3%	20.0%	29.8%	28.1%	27.7%
6 Years		15.8%	16.2%	29.7%	21.2%	20.0%	15.0%	14.9%	29.8%	19.5%
7 Years		7.0%	3.8%	16.2%	6.1%	10.0%	5.0%	12.8%	7.0%	7.9%
8 Years		8.8%	1.0%	2.7%	9.1%	12.9%	10.0%	2.1%	5.3%	6.2%
9 Years		6.1%	6.7%	2.7%	0.0%	4.3%	10.0%	4.3%	1.8%	4.8%
10 Years or More		18.4%	14.3%	2.7%	12.1%	14.3%	25.0%	10.6%	17.5%	14.7%
Missing Data		0.0%	0.0%	0.0%	0.0%	0.0%	0.0%	0.0%	0.0%	0.0%
Time to Degree for Transfers										
2 or Fewer Years		7.3%	17.0%	15.6%	5.9%	12.4%	14.3%	11.3%	10.6%	11.8%
3 Years		25.5%	34.1%	27.8%	38.8%	29.2%	7.1%	27.4%	29.8%	30.0%
4 Years		23.0%	23.1%	28.9%	32.9%	25.8%	28.6%	21.0%	22.3%	25.0%
5 Years		12.1%	10.4%	13.3%	5.9%	14.6%	14.3%	22.6%	12.8%	12.4%
6 Years		12.7%	5.5%	10.0%	1.2%	4.5%	7.1%	3.2%	6.4%	6.9%
7 Years		3.6%	3.3%	2.2%	3.5%	2.2%	7.1%	3.2%	2.1%	3.1%
8 Years		4.2%	1.1%	0.0%	1.2%	2.2%	7.1%	3.2%	4.3%	2.4%
9 Years or More		11.5%	5.5%	2.2%	10.6%	9.0%	14.3%	8.1%	11.7%	8.5%
Missing Data		0.0%	0.0%	0.0%	0.0%	0.0%	0.0%	0.0%	0.0%	0.0%
Graduating GPA (4 point scale)	mean	2.880	3.205	2.900	3.061	3.066	3.144	3.043	NA	3.032
	Std Dev	0.464	0.429	0.463	0.405	0.512	0.504	0.452	NA	0.473

Southern Illinois University at Edwardsville
Survey of 1994 Baccalaureate Graduates -- Nine Years Out

Comparison of All Graduates to Survey Respondents

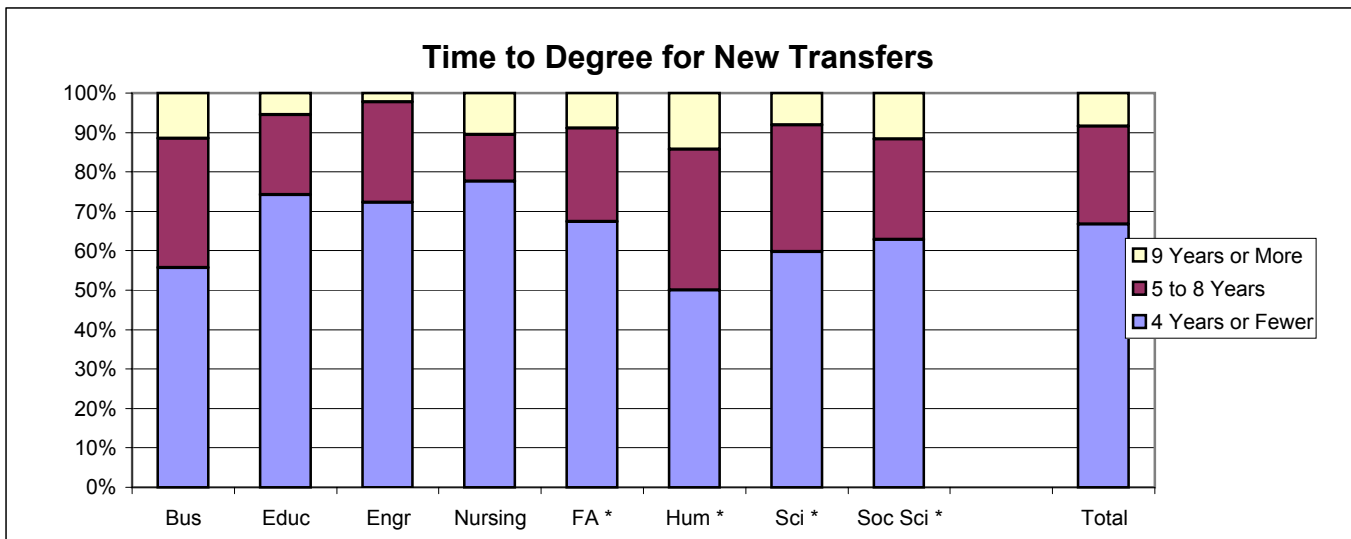
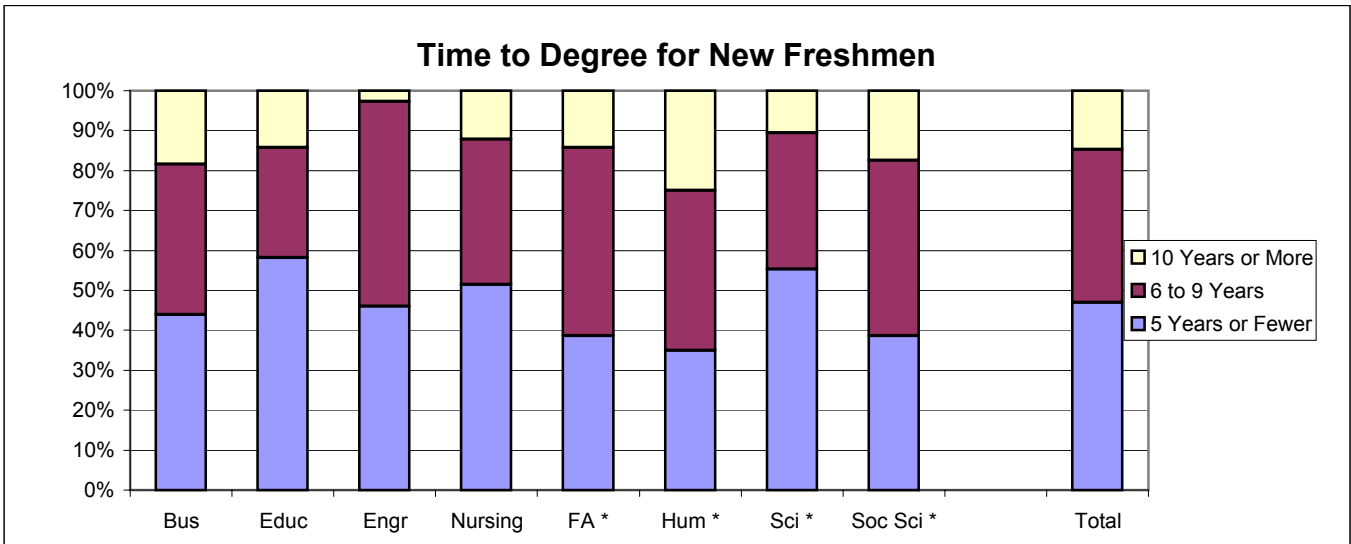
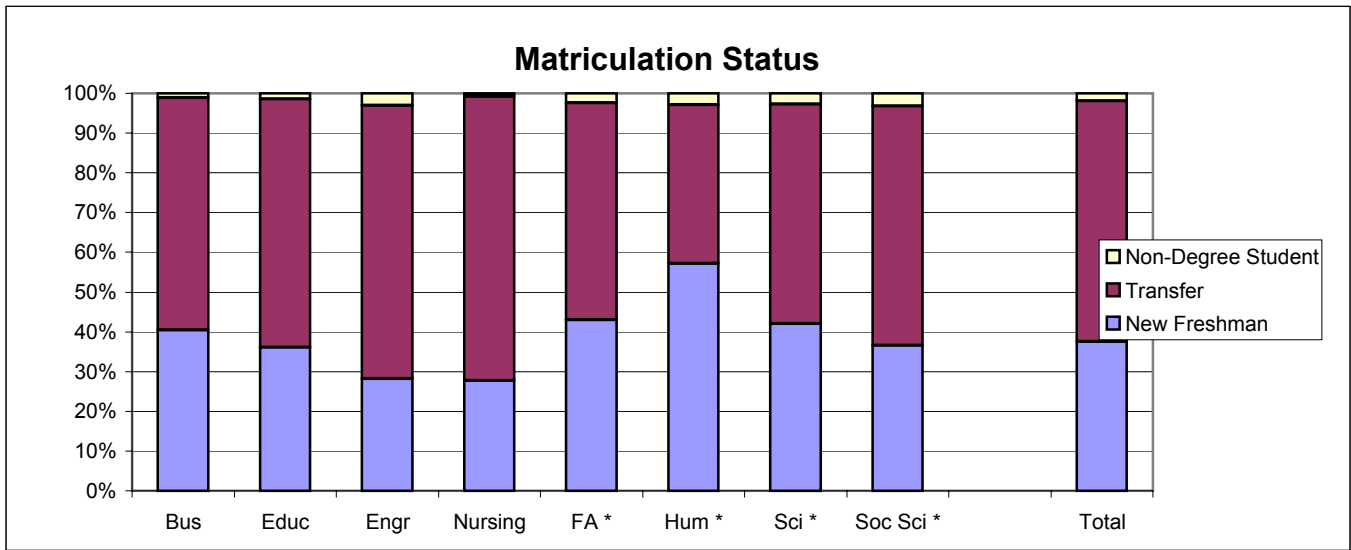
	Survey Respondents									
School Detail	BUS	EDUC	ENGR	NURS	FA *	HUM*	SCI*	SOC S*	Total	
Total	87	92	45	43	50	10	34	43	404	
Female	57.5%	89.1%	17.8%	81.4%	74.0%	50.0%	50.0%	60.5%	64.4%	
Male	42.5%	10.9%	82.2%	18.6%	26.0%	50.0%	50.0%	39.5%	35.6%	
Missing Data	0.0%	0.0%	0.0%	0.0%	0.0%	0.0%	0.0%	0.0%	0.0%	
White, Non-Hispanic	92.0%	91.3%	86.7%	93.0%	84.0%	90.0%	100.0%	83.7%	90.1%	
Black, Non-Hispanic	5.7%	8.7%	8.9%	4.7%	14.0%	10.0%	0.0%	16.3%	8.4%	
Asian/Pacific Islander	0.0%	0.0%	0.0%	2.3%	2.0%	0.0%	0.0%	0.0%	0.5%	
American Indian/Alaskan Native	2.3%	0.0%	0.0%	0.0%	0.0%	0.0%	0.0%	0.0%	0.5%	
Hispanic	0.0%	0.0%	0.0%	0.0%	0.0%	0.0%	0.0%	0.0%	0.0%	
Non-Resident Alien	0.0%	0.0%	4.4%	0.0%	0.0%	0.0%	0.0%	0.0%	0.5%	
Missing Data	0.0%	0.0%	0.0%	0.0%	0.0%	0.0%	0.0%	0.0%	0.0%	
Age at Graduation	range	21 to 55	21 to 48	22 to 46	21 to 42	21 to 57	22 to 47	21 to 48	22 to 59	21 to 64
	median	24.3	23.6	23.9	24.9	23.7	25.5	22.8	24.8	24.0
Bachelor of Science	90.8%	94.6%	100.0%	100.0%	66.0%	0.0%	91.2%	65.1%	85.6%	
Bachelor of Music	0.0%	0.0%	0.0%	0.0%	16.0%	0.0%	0.0%	0.0%	2.0%	
Bachelor of Arts	0.0%	5.4%	0.0%	0.0%	18.0%	100.0%	8.8%	30.2%	9.9%	
Bachelor of Fine Arts	0.0%	0.0%	0.0%	0.0%	0.0%	0.0%	0.0%	0.0%	0.0%	
Bachelor of Sci in Accountancy	9.2%	0.0%	0.0%	0.0%	0.0%	0.0%	0.0%	0.0%	2.0%	
Bachelor of Liberal Studies	0.0%	0.0%	0.0%	0.0%	0.0%	0.0%	0.0%	4.7%	0.5%	
Missing Data	0.0%	0.0%	0.0%	0.0%	0.0%	0.0%	0.0%	0.0%	0.0%	
Graduated Spring 1994	41.4%	56.5%	51.1%	32.6%	50.0%	50.0%	52.9%	44.2%	47.5%	
Graduated Summer 1994	26.4%	12.0%	15.6%	4.7%	26.0%	30.0%	20.6%	20.9%	18.6%	
Graduated Fall 1994	32.2%	31.5%	33.3%	62.8%	24.0%	20.0%	26.5%	34.9%	33.9%	
Missing Data	0.0%	0.0%	0.0%	0.0%	0.0%	0.0%	0.0%	0.0%	0.0%	
Matriculated as a New Freshman	44.8%	37.0%	28.9%	30.2%	58.0%	60.0%	38.2%	37.2%	40.3%	
Matriculated as a Transfer	55.2%	63.0%	68.9%	67.4%	40.0%	40.0%	58.8%	53.5%	57.7%	
Matriculated as a Non-Degree Student	0.0%	0.0%	2.2%	2.3%	2.0%	0.0%	2.9%	9.3%	2.0%	
Missing Data	0.0%	0.0%	0.0%	0.0%	0.0%	0.0%	0.0%	0.0%	0.0%	
Time to Degree for New Freshmen										
3 Years or Fewer	0.0%	0.0%	0.0%	0.0%	3.4%	0.0%	0.0%	0.0%	0.6%	
4 Years	11.5%	32.4%	15.4%	30.8%	27.6%	16.7%	23.1%	25.0%	26.4%	
5 Years	17.2%	20.6%	23.1%	7.7%	17.2%	0.0%	38.5%	25.0%	24.5%	
6 Years	1.1%	23.5%	38.5%	46.2%	17.2%	33.3%	23.1%	25.0%	20.9%	
7 Years	1.1%	2.9%	15.4%	0.0%	6.9%	0.0%	15.4%	0.0%	4.9%	
8 Years	3.4%	0.0%	0.0%	7.7%	6.9%	16.7%	0.0%	6.3%	4.9%	
9 Years	4.6%	8.8%	7.7%	0.0%	3.4%	16.7%	0.0%	0.0%	6.1%	
10 Years or More	5.7%	11.8%	0.0%	7.7%	17.2%	16.7%	0.0%	18.8%	11.7%	
Missing Data	0.0%	0.0%	0.0%	0.0%	0.0%	0.0%	0.0%	0.0%	0.0%	
Time to Degree for Transfers										
2 or Fewer Years	5.7%	25.9%	9.7%	10.3%	15.0%	0.0%	10.0%	13.0%	14.6%	
3 Years	16.1%	39.7%	35.5%	48.3%	35.0%	0.0%	45.0%	26.1%	36.1%	
4 Years	11.5%	20.7%	29.0%	17.2%	25.0%	50.0%	20.0%	30.4%	23.2%	
5 Years	3.4%	5.2%	9.7%	0.0%	5.0%	25.0%	25.0%	8.7%	7.7%	
6 Years	4.6%	3.4%	12.9%	3.4%	0.0%	0.0%	0.0%	4.3%	5.2%	
7 Years	4.6%	3.4%	3.2%	3.4%	5.0%	0.0%	0.0%	4.3%	4.3%	
8 Years	2.3%	0.0%	0.0%	0.0%	5.0%	25.0%	0.0%	0.0%	1.7%	
9 Years or More	6.9%	1.7%	0.0%	17.2%	10.0%	0.0%	0.0%	13.0%	7.3%	
Missing Data	0.0%	0.0%	0.0%	0.0%	0.0%	0.0%	0.0%	0.0%	0.0%	
Graduating GPA (4 point scale)	mean	2.990	3.309	3.000	3.107	3.175	3.150	3.156	NA	3.127
	Std Dev	0.445	0.389	0.501	0.448	0.575	0.509	0.452	NA	0.471

1994 Baccalaureate Recipients Profile



1994 Baccalaureate Recipients

Profile, cont't.



Southern Illinois University Edwardsville
Survey of 1994 Baccalaureate Graduates -- Nine Years Out
Survey Responses -- Part I
Employment Questions

School Detail	BUS	EDUC	ENGR	NURS	FA *	HUM*	SCI*	SOC S*	Total
Number of Survey Respondents	87	92	45	43	50	10	34	43	404
1. Number Employed:									
Full-time	82.8%	81.5%	97.8%	79.1%	78.0%	70.0%	91.2%	79.1%	83.2%
Part-time	8.0%	8.7%	0.0%	16.3%	14.0%	10.0%	8.8%	7.0%	8.9%
Not, but Seeking	3.4%	2.2%	2.2%	0.0%	2.0%	0.0%	0.0%	7.0%	2.5%
Not, not Seeking	5.7%	7.6%	0.0%	4.7%	6.0%	20.0%	0.0%	7.0%	5.4%
Number Responding	87	92	45	43	50	10	34	43	404
The remaining questions in Part I were to be answered only by respondents who were employed full-time or part-time.									
	79	83	44	41	46	8	34	37	372
2. Place of Employment									
Illinois	39.2%	78.5%	23.3%	57.5%	50.0%	66.7%	35.3%	51.4%	50.5%
Missouri	41.8%	16.5%	53.5%	30.0%	34.8%	33.3%	35.3%	40.5%	34.6%
Other	19.0%	5.1%	23.3%	12.5%	15.2%	0.0%	29.4%	8.1%	14.8%
Number Responding	79	79	43	40	46	6	34	37	364
3. Classification of Primary Employer									
Self-Employed or Private Practice	7.8%	4.8%	4.5%	12.2%	6.5%	12.5%	5.9%	8.1%	7.0%
Business (Industrial, Commercial or Service)	67.5%	8.4%	31.8%	4.9%	23.9%	37.5%	23.5%	18.9%	28.1%
Professional Firm (e.g., Engineering, Law)	3.9%	1.2%	40.9%	0.0%	4.3%	0.0%	8.8%	8.1%	8.1%
College or University	1.3%	2.4%	0.0%	0.0%	6.5%	25.0%	17.6%	13.5%	5.1%
Elementary/Secondary School	5.2%	67.5%	0.0%	0.0%	39.1%	0.0%	20.6%	13.5%	24.3%
Health Agency (e.g. Hospital, Clinic)	2.6%	3.6%	2.3%	63.4%	4.3%	12.5%	14.7%	10.8%	11.9%
Federal, State, or Local Government	6.5%	2.4%	13.6%	14.6%	4.3%	0.0%	0.0%	16.2%	7.3%
Armed Services	0.0%	0.0%	0.0%	0.0%	0.0%	0.0%	0.0%	0.0%	0.0%
NonProfit (Non-Government)	3.9%	6.0%	2.3%	0.0%	8.7%	0.0%	2.9%	8.1%	4.6%
Other	1.3%	3.6%	4.5%	4.9%	2.2%	12.5%	5.9%	2.7%	3.5%
Number Responding	77	83	44	41	46	8	34	37	370
4. Job Satisfaction									
Very Satisfied	35.4%	42.2%	31.8%	39.0%	37.0%	50.0%	52.9%	43.2%	39.8%
Satisfied	43.0%	42.2%	50.0%	48.8%	28.3%	25.0%	41.2%	37.8%	41.4%
Somewhat Satisfied	17.7%	12.0%	11.4%	9.8%	26.1%	12.5%	2.9%	16.2%	14.2%
Somewhat Dissatisfied	2.5%	0.0%	2.3%	2.4%	2.2%	0.0%	0.0%	2.7%	1.6%
Dissatisfied	1.3%	1.2%	4.5%	0.0%	4.3%	12.5%	2.9%	0.0%	2.2%
Very Dissatisfied	0.0%	2.4%	0.0%	0.0%	2.2%	0.0%	0.0%	0.0%	0.8%
Number Responding	79	83	44	41	46	8	34	37	372
5. Job in Field?									
Closely Related	44.3%	77.1%	61.4%	80.5%	47.8%	25.0%	67.6%	29.7%	58.3%
Related	43.0%	10.8%	27.3%	19.5%	28.3%	25.0%	23.5%	35.1%	26.6%
Unrelated (by choice)	5.1%	2.4%	0.0%	0.0%	4.3%	12.5%	0.0%	5.4%	3.0%
Unrelated (not by choice)	6.3%	8.4%	9.1%	0.0%	8.7%	12.5%	5.9%	24.3%	8.6%
Unrelated (choice unknown)	1.3%	1.2%	2.3%	0.0%	10.9%	25.0%	2.9%	5.4%	3.5%
Number Responding	79	83	44	41	46	8	34	37	372
6. Number of Employers After Graduation									
One	28.2%	41.0%	22.7%	24.4%	20.0%	0.0%	23.5%	16.2%	26.8%
Two	25.6%	31.3%	43.2%	24.4%	24.4%	62.5%	41.2%	29.7%	31.4%
Three to Six	44.9%	24.1%	34.1%	46.3%	55.6%	37.5%	29.4%	48.6%	39.3%
More than Six	1.3%	3.6%	0.0%	4.9%	0.0%	0.0%	5.9%	5.4%	2.4%
Number Responding	78	83	44	41	45	8	34	37	369

* With the exception of two programs, these schools now comprise the College of Arts and Sciences. Degrees in Human Services and Liberal Studies are included with the Social Sciences.

Southern Illinois University Edwardsville
Survey of 1994 Baccalaureate Graduates -- Nine Years Out
Survey Responses -- Part I
Employment Questions

School Detail, con't.	BUS	EDUC	ENGR	NURS	FA *	HUM*	SCI*	SOC S*	Total
7. Annual Earned Income in Current Job Before Taxes									
Employed Full-Time									
Less Than \$25,000	2.9%	7.0%	0.0%	0.0%	10.5%	16.7%	0.0%	0.0%	3.8%
\$25,000 to \$29,999	1.4%	9.9%	0.0%	3.1%	2.6%	0.0%	0.0%	13.3%	4.4%
\$30,000 to \$34,999	5.8%	22.5%	5.0%	12.5%	18.4%	0.0%	6.9%	13.3%	12.4%
\$35,000 to \$39,999	4.3%	12.7%	2.5%	3.1%	15.8%	0.0%	13.8%	10.0%	8.6%
\$40,000 to \$44,999	11.6%	23.9%	5.0%	21.9%	18.4%	16.7%	10.3%	13.3%	15.6%
\$45,000 to 49,999	7.2%	15.5%	5.0%	6.3%	5.3%	16.7%	13.8%	13.3%	9.8%
\$50,000 or More	66.7%	8.5%	82.5%	53.1%	28.9%	50.0%	55.2%	36.7%	45.4%
Number Responding	69	71	40	32	38	6	29	30	315
Mean Salary	\$64,761	\$37,407	\$68,599	\$56,474	\$41,497	\$55,867	\$63,276	\$52,801	\$51,230
Employed Part-Time									
Less Than 20,000	42.9%	42.9%	--	0.0%	75.0%	100.0%	100.0%	50.0%	46.7%
20,000 to \$24,999	14.3%	28.6%	--	33.3%	25.0%	0.0%	--	0.0%	20.0%
\$25,000 to \$29,999	0.0%	14.3%	--	16.7%	0.0%	0.0%	--	0.0%	6.7%
\$30,000 to \$34,999	0.0%	0.0%	--	33.3%	0.0%	0.0%	--	0.0%	6.7%
\$35,000 or More	42.9%	14.3%	--	16.7%	0.0%	0.0%	--	50.0%	20.0%
Number Responding	7	7	0	6	4	1	3	2	30
Mean Salary	\$28,806	\$19,571	--	\$28,000	\$14,875	\$12,000	\$11,833	\$27,000	\$22,255
8. Bachelor's Degree Preparation for Career Path									
Very Well	7.6%	19.8%	9.1%	29.3%	30.4%	37.5%	18.2%	24.3%	19.0%
Well	44.3%	43.2%	43.2%	34.1%	23.9%	25.0%	51.5%	16.2%	37.7%
Adequately	43.0%	32.1%	36.4%	29.3%	39.1%	25.0%	24.2%	35.1%	35.0%
Inadequately	3.8%	3.7%	11.4%	2.4%	4.3%	0.0%	3.0%	16.2%	5.7%
Poorly	1.3%	1.2%	0.0%	2.4%	0.0%	0.0%	0.0%	2.7%	1.1%
Very Poorly	0.0%	0.0%	0.0%	2.4%	2.2%	12.5%	3.0%	5.4%	1.6%
Number Responding	79	81	44	41	46	8	33	37	369
9a. Primary Occupation									
Management	33.3%	6.3%	11.6%	14.6%	9.3%	37.5%	12.1%	5.9%	15.3%
Business Operations	6.4%	1.3%	2.3%	0.0%	4.7%	0.0%	3.0%	5.9%	3.3%
Financial Specialists	17.9%	2.5%	0.0%	0.0%	0.0%	0.0%	0.0%	0.0%	4.4%
Computer Specialists	11.5%	0.0%	9.3%	0.0%	2.3%	12.5%	15.2%	5.9%	6.1%
Mathematical Scientists and Technicians	0.0%	0.0%	0.0%	0.0%	0.0%	0.0%	6.1%	0.0%	0.6%
Architects, Surveyors, and Cartographers	0.0%	0.0%	0.0%	0.0%	0.0%	0.0%	0.0%	0.0%	0.0%
Engineers and Related Technicians	1.3%	0.0%	72.1%	0.0%	0.0%	0.0%	0.0%	0.0%	8.9%
Life and Physical Scientists	0.0%	0.0%	0.0%	0.0%	0.0%	0.0%	9.1%	0.0%	0.8%
Social Scientists	0.0%	1.3%	0.0%	0.0%	0.0%	0.0%	0.0%	11.8%	1.4%
Health: Doctors	0.0%	0.0%	0.0%	0.0%	0.0%	0.0%	9.1%	0.0%	0.8%
Health: Registered Nurses	0.0%	0.0%	0.0%	78.0%	0.0%	0.0%	0.0%	0.0%	8.9%
Health: Therapists	0.0%	1.3%	0.0%	2.4%	14.0%	0.0%	0.0%	2.9%	2.5%
Health: Other Health Practs, Profs & supp	1.3%	0.0%	0.0%	2.4%	0.0%	0.0%	12.1%	2.9%	1.9%
Community and Social Service	0.0%	7.5%	0.0%	0.0%	2.3%	0.0%	0.0%	20.6%	3.9%
Legal: Attorneys/Judges	0.0%	0.0%	0.0%	0.0%	2.3%	0.0%	3.0%	5.9%	1.1%
Legal: Legal Support Workers	0.0%	0.0%	0.0%	0.0%	0.0%	0.0%	3.0%	2.9%	0.6%
Education: Early Childhood Teachers	0.0%	7.5%	0.0%	0.0%	2.3%	0.0%	0.0%	0.0%	1.9%
Education: Elementary School Teachers	0.0%	35.0%	0.0%	0.0%	4.7%	0.0%	0.0%	0.0%	8.3%
Education: Middle School Teachers	0.0%	13.8%	0.0%	0.0%	2.3%	0.0%	0.0%	0.0%	3.3%

continued on nex page

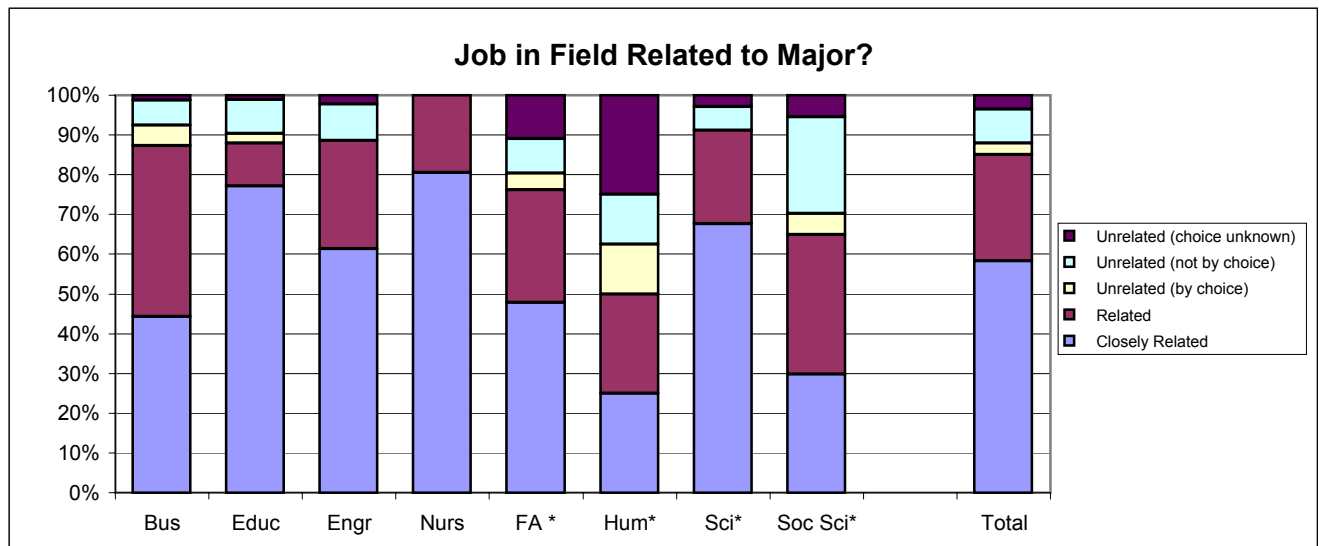
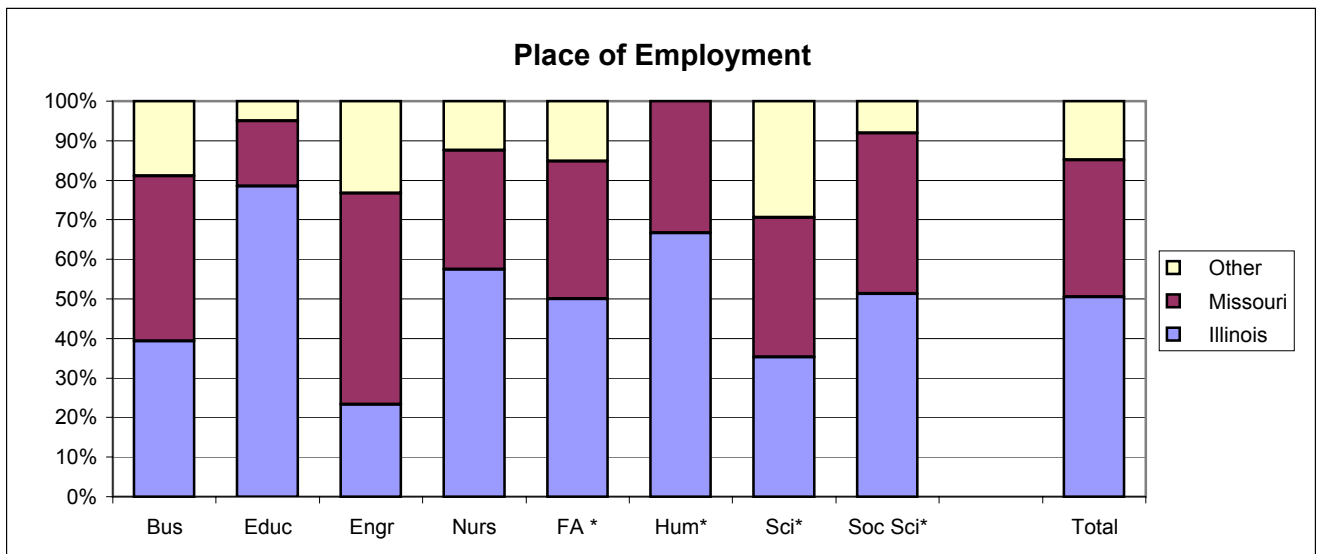
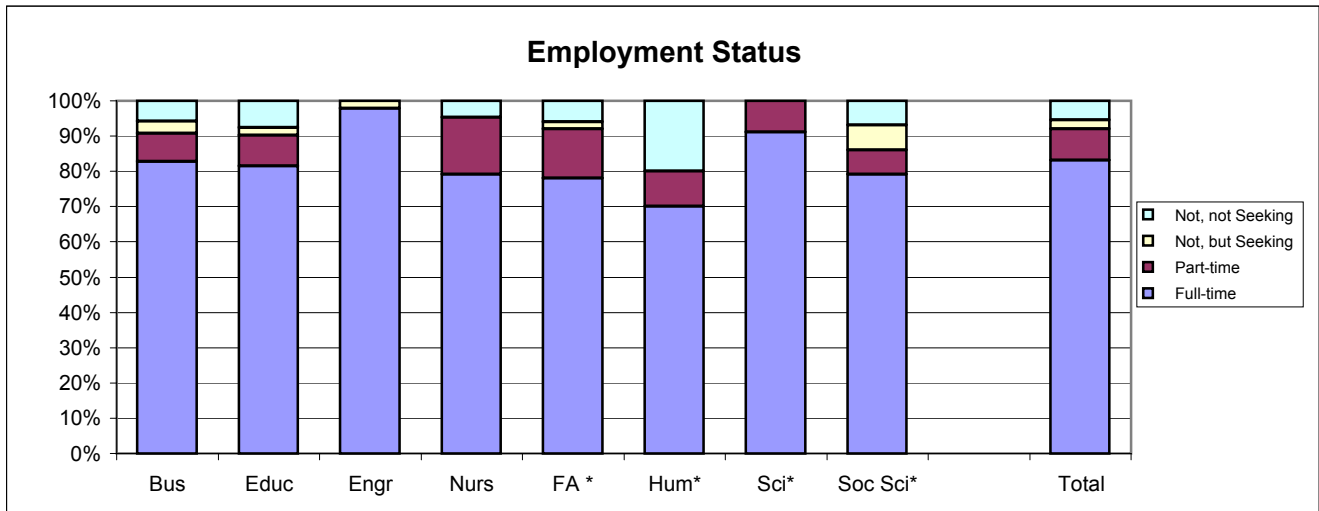
* With the exception of two programs, these schools now comprise the College of Arts and Sciences. Degrees in Human Services and Liberal Studies are included with the Social Sciences.

Southern Illinois University Edwardsville
Survey of 1994 Baccalaureate Graduates -- Nine Years Out
Survey Responses -- Part I
Employment Questions

School Detail, con't.	BUS	EDUC	ENGR	NURS	FA *	HUM*	SCI*	SOC S*	Total
Education: Secondary Teachers	2.6%	3.8%	0.0%	0.0%	4.7%	0.0%	18.2%	2.9%	3.9%
Education: Special Education Teachers	0.0%	10.0%	0.0%	0.0%	2.3%	0.0%	0.0%	0.0%	2.5%
Education: Other, except Administrators	1.3%	3.8%	0.0%	0.0%	11.6%	12.5%	6.1%	5.9%	3.9%
Library Occupations	0.0%	0.0%	0.0%	0.0%	0.0%	0.0%	0.0%	0.0%	0.0%
Arts and Design Workers	0.0%	0.0%	0.0%	0.0%	4.7%	0.0%	0.0%	2.9%	0.8%
Entertainment, Performers, Sports & Related	0.0%	0.0%	0.0%	0.0%	9.3%	0.0%	0.0%	0.0%	1.1%
Media and Communication Workers	0.0%	0.0%	0.0%	0.0%	4.7%	0.0%	0.0%	2.9%	0.8%
Sales	15.4%	2.5%	4.7%	2.4%	9.3%	25.0%	0.0%	8.8%	7.2%
Office and Administration	2.6%	2.5%	0.0%	0.0%	4.7%	12.5%	3.0%	5.9%	2.8%
Protective Services	1.3%	0.0%	0.0%	0.0%	0.0%	0.0%	0.0%	5.9%	0.8%
Food Preparation and Serving	1.3%	0.0%	0.0%	0.0%	0.0%	0.0%	0.0%	0.0%	0.3%
Buildings and Grounds Maintenance	0.0%	0.0%	0.0%	0.0%	0.0%	0.0%	0.0%	0.0%	0.0%
Personal Care and Services	0.0%	0.0%	0.0%	0.0%	2.3%	0.0%	0.0%	0.0%	0.3%
Farming, Fishing, and Forestry	0.0%	0.0%	0.0%	0.0%	0.0%	0.0%	0.0%	0.0%	0.0%
Construction and Extractive	0.0%	0.0%	0.0%	0.0%	0.0%	0.0%	0.0%	0.0%	0.0%
Installation, Maintenance, and Repair	1.3%	0.0%	0.0%	0.0%	0.0%	0.0%	0.0%	0.0%	0.3%
Production	0.0%	0.0%	0.0%	0.0%	2.3%	0.0%	0.0%	0.0%	0.3%
Transportation and Material Moving	1.3%	0.0%	0.0%	0.0%	0.0%	0.0%	0.0%	0.0%	0.3%
Military	1.3%	1.3%	0.0%	0.0%	0.0%	0.0%	0.0%	0.0%	0.6%
Number Responding	78	80	43	41	43	8	33	34	360
9b. Industry									
Agriculture, Forestry, and Fishing	4.3%	0.0%	2.6%	0.0%	2.9%	0.0%	0.0%	3.7%	2.1%
Mining	0.0%	0.0%	0.0%	0.0%	0.0%	0.0%	0.0%	0.0%	0.0%
Utilities	4.3%	0.0%	5.3%	0.0%	0.0%	0.0%	0.0%	0.0%	1.7%
Construction	2.9%	0.0%	13.2%	0.0%	2.9%	0.0%	0.0%	7.4%	3.5%
Manufacturing	17.4%	0.0%	13.2%	0.0%	2.9%	0.0%	13.8%	0.0%	7.6%
Wholesale Trade	5.8%	1.7%	0.0%	0.0%	0.0%	20.0%	0.0%	0.0%	2.1%
Retail Trade	7.2%	5.1%	2.6%	0.0%	2.9%	0.0%	3.4%	3.7%	4.2%
Transportation	2.9%	0.0%	13.2%	0.0%	0.0%	0.0%	3.4%	0.0%	2.8%
Information	1.4%	0.0%	0.0%	0.0%	0.0%	20.0%	0.0%	0.0%	0.7%
Finance & Insurance	20.3%	3.4%	0.0%	0.0%	2.9%	0.0%	3.4%	11.1%	7.3%
Real Estate & Rental & Leasing	2.9%	0.0%	0.0%	0.0%	2.9%	0.0%	0.0%	0.0%	1.0%
Professional, Scientific & Technical Services	2.9%	1.7%	39.5%	0.0%	8.8%	20.0%	17.2%	3.7%	9.7%
Management of Companies & Enterprises	1.4%	0.0%	2.6%	0.0%	0.0%	0.0%	0.0%	3.7%	1.0%
Admin & Suppt, Waste Mgmt & Remedtn Svcs	0.0%	1.7%	0.0%	0.0%	0.0%	0.0%	0.0%	0.0%	0.3%
Educational Services	5.8%	74.6%	0.0%	0.0%	35.3%	20.0%	34.5%	29.6%	27.4%
Health Care & Social Assistance	4.3%	11.9%	2.6%	88.9%	8.8%	20.0%	20.7%	18.5%	17.4%
Arts, Entertainment & Recreation	0.0%	0.0%	0.0%	0.0%	14.7%	0.0%	0.0%	0.0%	1.7%
Accommodations & Food Services	0.0%	0.0%	0.0%	0.0%	2.9%	0.0%	0.0%	0.0%	0.3%
Other Services (except Public Admin)	14.5%	0.0%	5.3%	7.4%	11.8%	0.0%	3.4%	14.8%	8.0%
Public Administration	1.4%	0.0%	0.0%	3.7%	0.0%	0.0%	0.0%	3.7%	1.0%
Number Responding	69	59	38	27	34	5	29	27	288

* With the exception of two programs, these schools now comprise the College of Arts and Sciences. Degrees in Human Services and Liberal Studies are included with the Social Sciences.

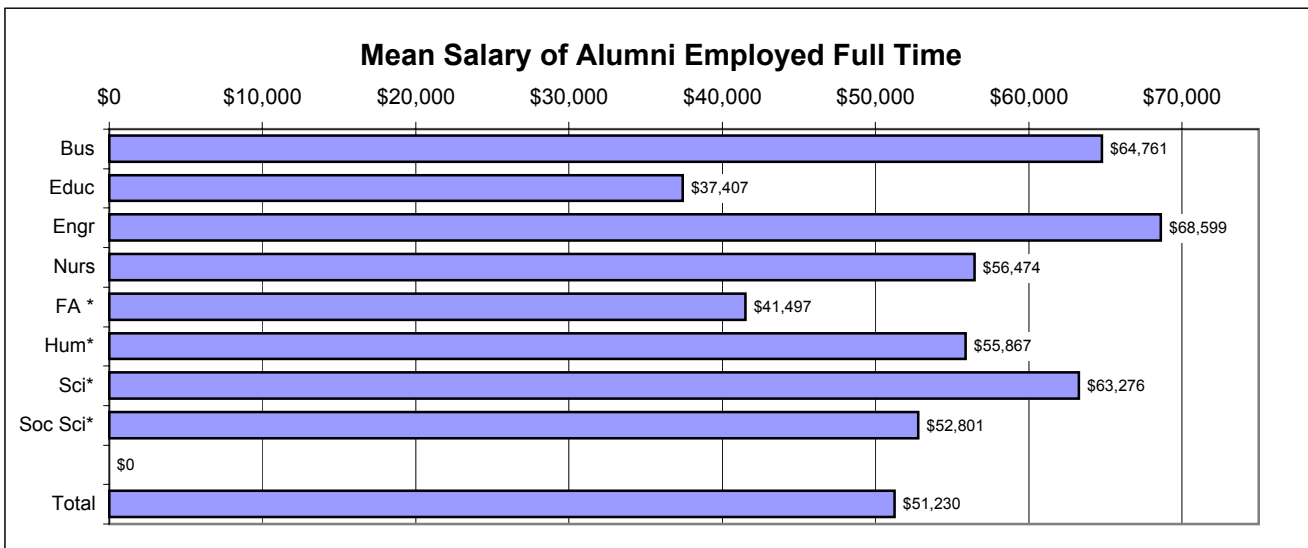
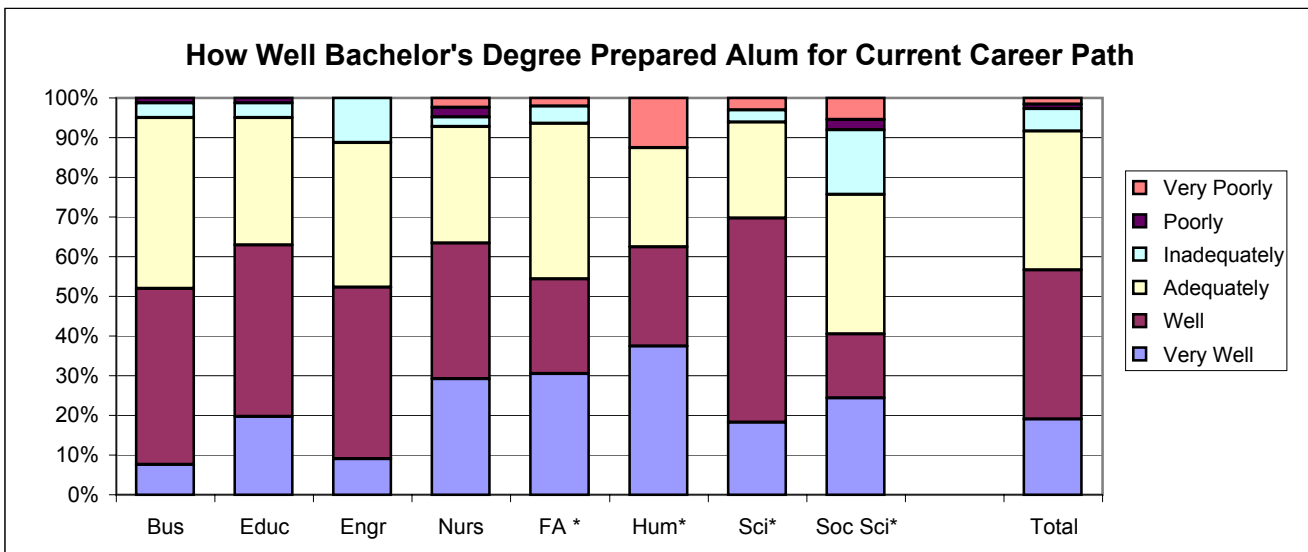
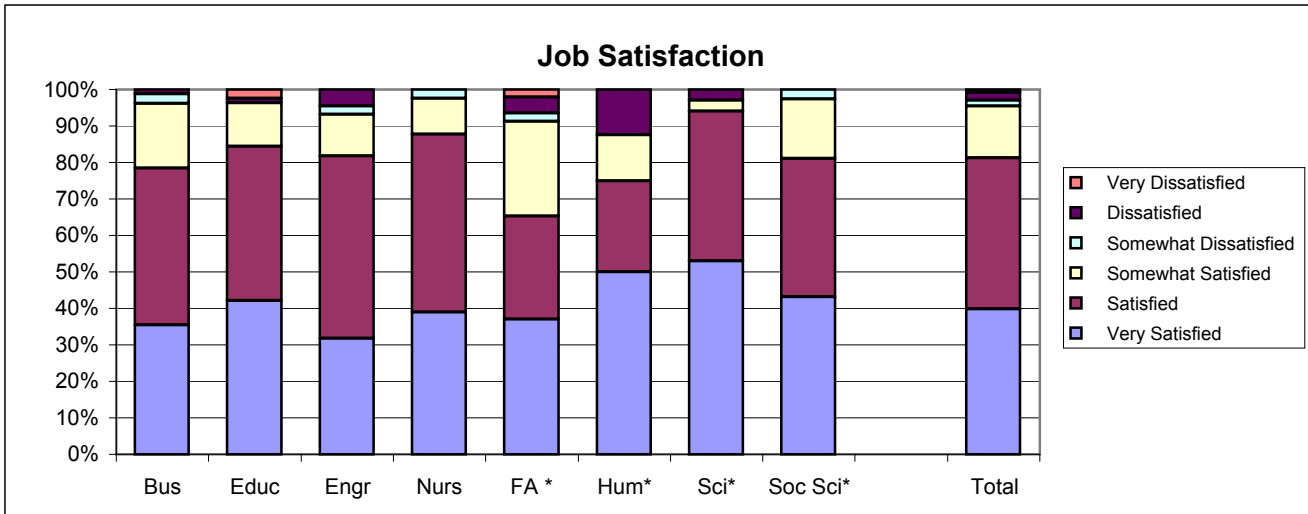
1994 Baccalaureate Graduates Nine Years Out *Employment*



* With the exception of two programs, these schools now comprise the College of Arts and Sciences. Degrees in Human Services and Liberal Studies are included with the Social Sciences.

1994 Baccalaureate Graduates Nine Years Out

Employment, *con't.*



* With the exception of two programs, these schools now comprise the College of Arts and Sciences. Degrees in Human Services and Liberal Studies are included with the Social Sciences.

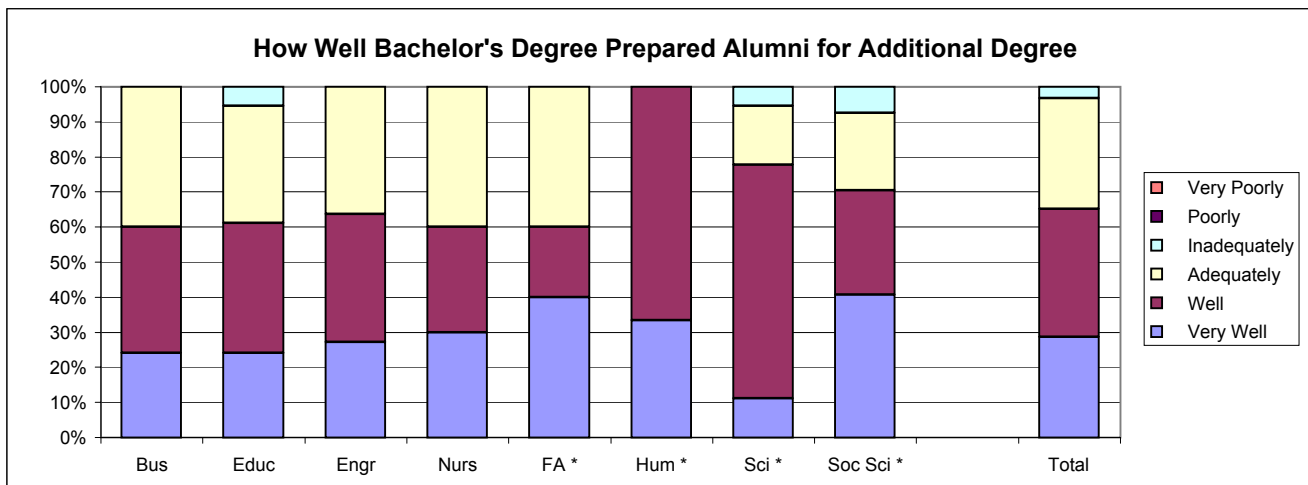
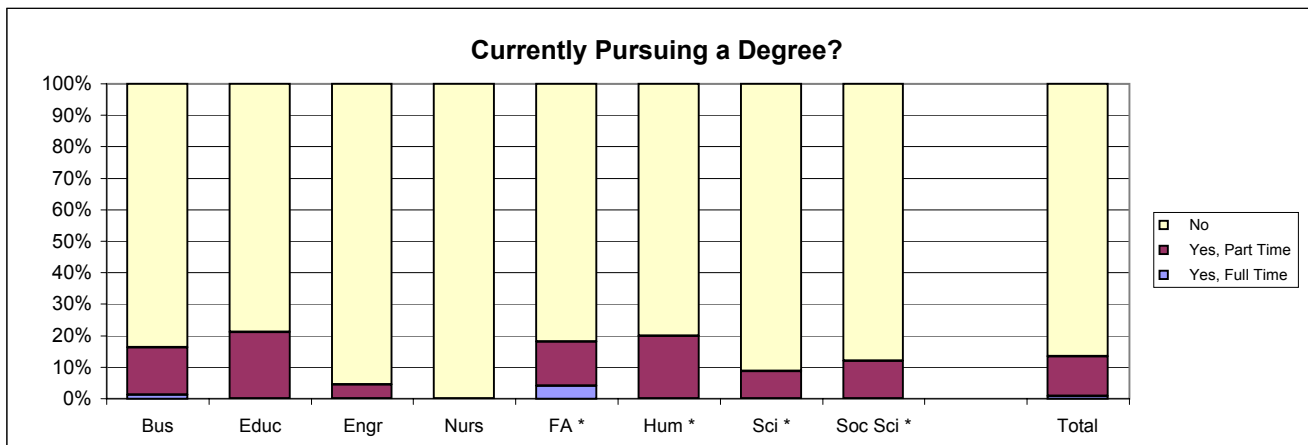
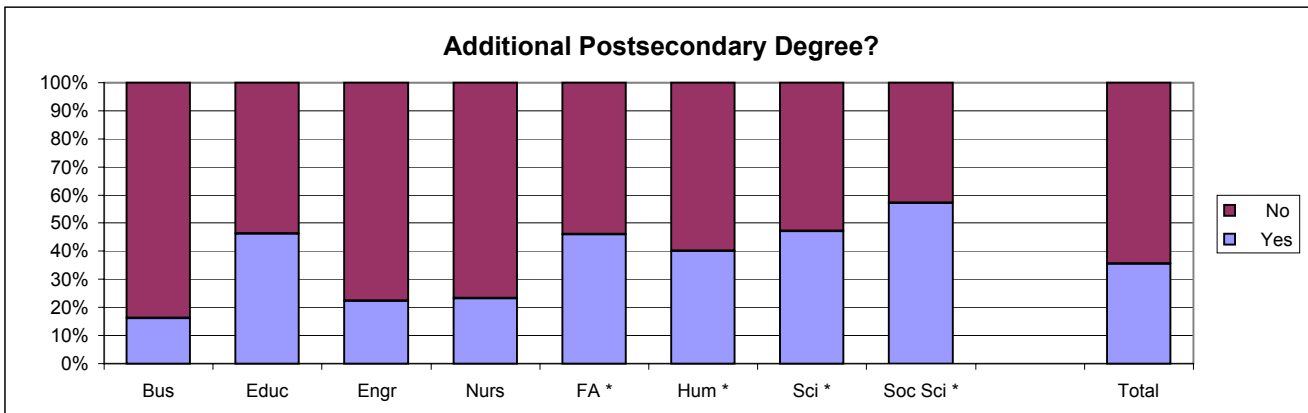
Southern Illinois University Edwardsville
Survey of 1994 Baccalaureate Graduates -- Nine Years Out
Survey Responses -- Part II
Education Questions

School Detail	BUS	EDUC	ENGR	NURS	FA *	HUM*	SCI*	SOC S*	Total
Number of Survey Respondents	87	92	45	43	50	10	34	43	404
10. Additional Postsecondary Degree?									
Yes **	16.1%	46.2%	22.2%	23.3%	46.0%	40.0%	47.1%	57.1%	35.6%
No	83.9%	53.8%	77.8%	76.7%	54.0%	60.0%	52.9%	42.9%	64.4%
Number Responding	87	91	45	43	50	10	34	42	402
If Yes, What Degree?									
Associate's	0.0%	0.0%	0.0%	0.0%	0.0%	0.0%	0.0%	0.0%	0.0%
Second Bachelor's	0.0%	7.1%	0.0%	0.0%	4.5%	0.0%	0.0%	4.2%	3.6%
Academic Master's (MA, MS, MEd, etc)	14.3%	71.4%	70.0%	50.0%	81.8%	0.0%	56.3%	29.2%	56.1%
Prof. Master's or Ed Specialist	85.7%	16.7%	30.0%	20.0%	9.1%	0.0%	6.3%	54.2%	28.8%
Medicine (MD, OD)	0.0%	0.0%	0.0%	0.0%	0.0%	0.0%	6.3%	0.0%	0.7%
Health Prof. (dentistry, pharmacy, etc.)	0.0%	2.4%	0.0%	10.0%	0.0%	0.0%	12.5%	0.0%	2.9%
Theology/Divinity	0.0%	0.0%	0.0%	0.0%	0.0%	0.0%	0.0%	4.2%	0.7%
Law (LLB, JD)	0.0%	0.0%	0.0%	0.0%	4.5%	0.0%	6.3%	8.3%	2.9%
Doctorate (PhD, EdD, DA, DBA, etc.)	0.0%	0.0%	0.0%	0.0%	0.0%	0.0%	12.5%	0.0%	1.4%
Other	0.0%	2.4%	0.0%	20.0%	0.0%	100.0%	0.0%	0.0%	2.9%
Number Responding	14	42	10	10	22	1	16	24	139
11. Currently Pursuing a Degree?									
Yes, Full Time **	1.2%	0.0%	0.0%	0.0%	4.0%	0.0%	0.0%	0.0%	0.8%
Yes, Part Time **	15.1%	21.1%	4.4%	0.0%	14.0%	20.0%	8.8%	11.9%	12.8%
No	83.7%	78.9%	95.6%	100.0%	82.0%	80.0%	91.2%	88.1%	86.5%
Number Responding	86	90	45	43	50	10	34	42	400
If Yes, What Degree?									
Associate's	7.1%	5.3%	0.0%	#DIV/0!	0.0%	50.0%	0.0%	0.0%	5.7%
Second Bachelor's	0.0%	0.0%	0.0%	#DIV/0!	11.1%	0.0%	0.0%	0.0%	1.9%
Academic Master's (MA, MS, MEd, etc)	14.3%	73.7%	100.0%	#DIV/0!	33.3%	0.0%	50.0%	60.0%	47.2%
Prof. Master's or Ed Specialist	57.1%	15.8%	0.0%	#DIV/0!	0.0%	50.0%	0.0%	20.0%	24.5%
Medicine (MD, OD)	0.0%	0.0%	0.0%	#DIV/0!	0.0%	0.0%	0.0%	0.0%	0.0%
Health Prof. (dentistry, pharmacy, etc.)	0.0%	0.0%	0.0%	#DIV/0!	0.0%	0.0%	0.0%	0.0%	0.0%
Theology/Divinity	0.0%	0.0%	0.0%	#DIV/0!	11.1%	0.0%	0.0%	0.0%	1.9%
Law (LLB, JD)	7.1%	0.0%	0.0%	#DIV/0!	0.0%	0.0%	50.0%	0.0%	3.8%
Doctorate (PhD, EdD, DA, DBA, etc.)	7.1%	0.0%	0.0%	#DIV/0!	11.1%	0.0%	0.0%	20.0%	5.7%
Other	7.1%	5.3%	0.0%	#DIV/0!	33.3%	0.0%	0.0%	0.0%	9.4%
Number Responding	14	19	2	0	9	2	2	5	53
12. Bachelor's Degree Preparation for Additional Degree									28.7%
Very Well	24.0%	24.1%	27.3%	30.0%	40.0%	33.3%	11.1%	40.7%	
Well	36.0%	37.0%	36.4%	30.0%	20.0%	66.7%	66.7%	29.6%	36.5%
Adequately	40.0%	33.3%	36.4%	40.0%	40.0%	0.0%	16.7%	22.2%	31.5%
Inadequately	0.0%	5.6%	0.0%	0.0%	0.0%	0.0%	5.6%	7.4%	3.3%
Poorly	0.0%	0.0%	0.0%	0.0%	0.0%	0.0%	0.0%	0.0%	0.0%
Very Poorly	0.0%	0.0%	0.0%	0.0%	0.0%	0.0%	0.0%	0.0%	0.0%
Number Responding	25	54	11	10	30	6	18	27	181

* With the exception of two programs, these schools now comprise the College of Arts and Sciences. Degrees in Human Services and Liberal Studies are included with the Social Sciences.

** The responses marked with asterisks each lead to a related question which was to be answered only by those who selected the asterisked responses.

1994 Baccalaureate Graduates Nine Years Out Additional Education



* With the exception of two programs, these schools now comprise the College of Arts and Sciences. Degrees in Human Services and Liberal Studies are included with the Social Sciences.

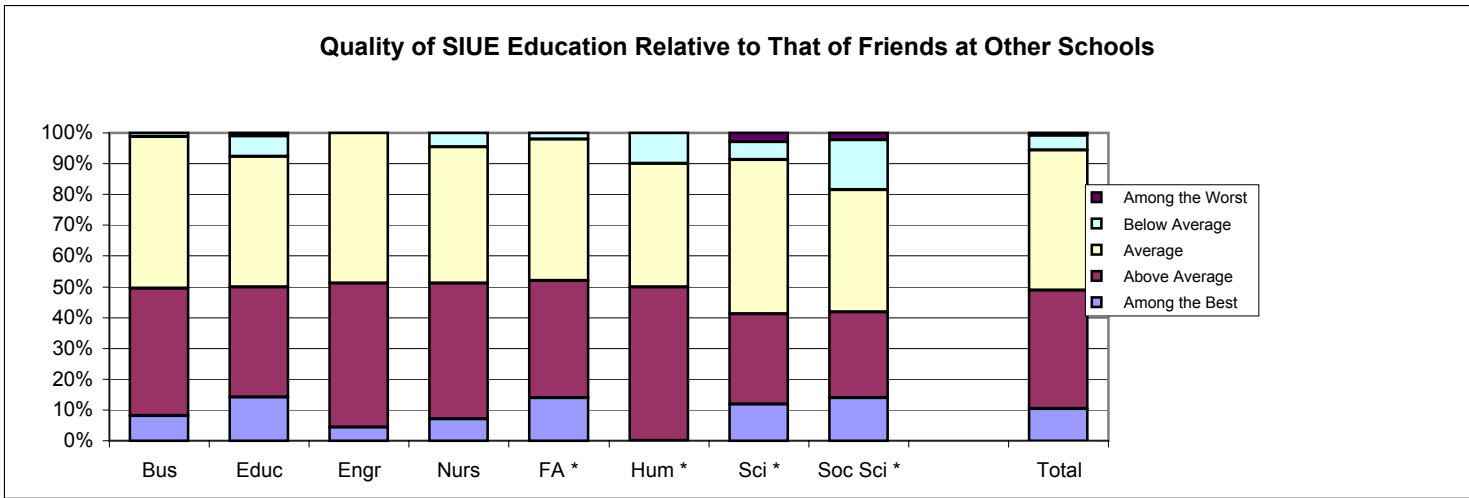
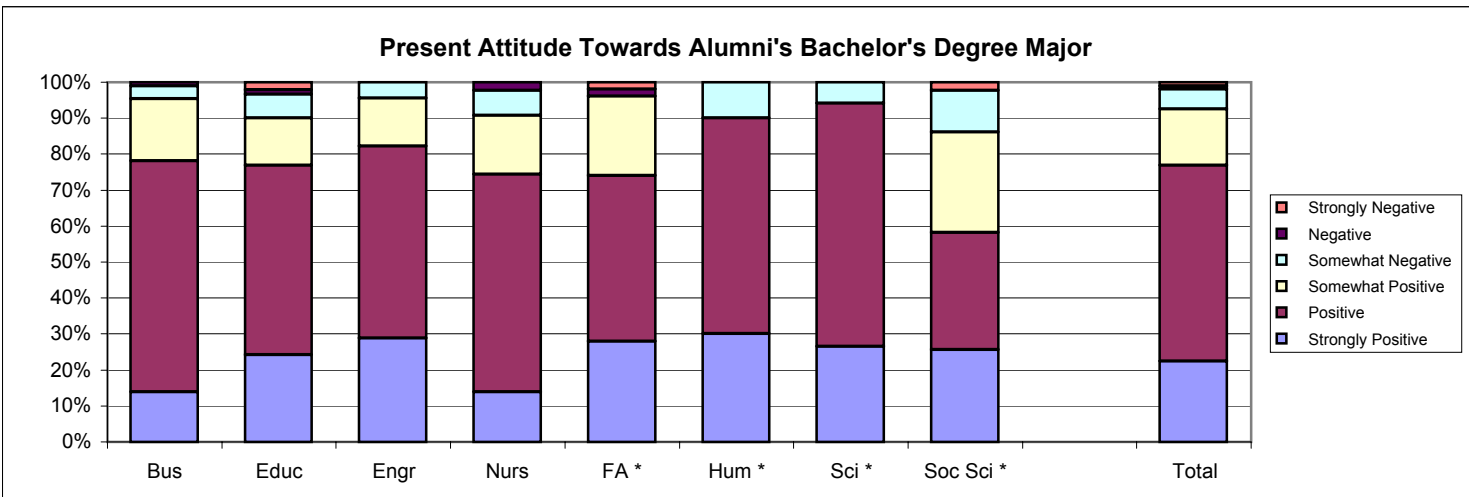
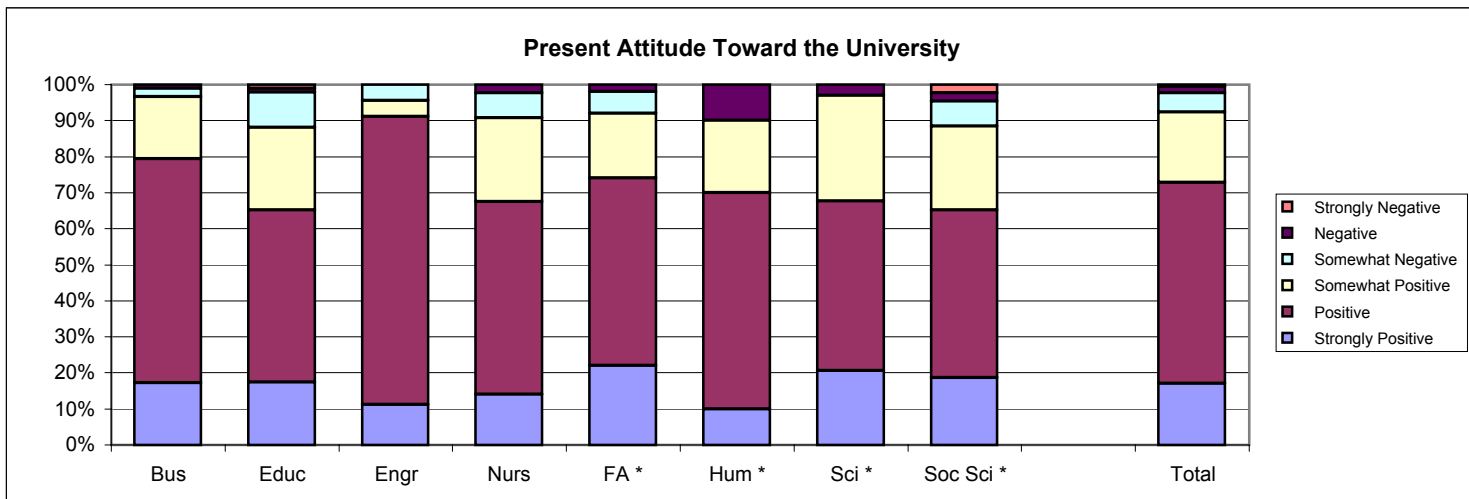
Southern Illinois University Edwardsville
Survey of 1994 Baccalaureate Graduates -- Nine Years Out
Survey Responses -- Part III
Satisfaction Questions

School Detail	BUS	EDUC	ENGR	NURS	FA *	HUM*	SCI*	SOC S*	Total
Number of Survey Respondents	87	92	45	43	50	10	34	43	404
13. Present Attitude Towards the University									
Strongly Positive	17.2%	17.4%	11.1%	14.0%	22.0%	10.0%	20.6%	18.6%	17.1%
Positive	62.1%	47.8%	80.0%	53.5%	52.0%	60.0%	47.1%	46.5%	55.7%
Somewhat Positive	17.2%	22.8%	4.4%	23.3%	18.0%	20.0%	29.4%	23.3%	19.6%
Somewhat Negative	2.3%	9.8%	4.4%	7.0%	6.0%	0.0%	0.0%	7.0%	5.4%
Negative	1.1%	1.1%	0.0%	2.3%	2.0%	10.0%	2.9%	2.3%	1.7%
Strongly Negative	0.0%	1.1%	0.0%	0.0%	0.0%	0.0%	0.0%	2.3%	0.5%
Number Responding	87	92	45	43	50	10	34	43	404
14. Present Attitude Towards your Bachelor's Degree Major									
Strongly Positive	13.8%	24.2%	28.9%	14.0%	28.0%	30.0%	26.5%	25.6%	22.3%
Positive	64.4%	52.7%	53.3%	60.5%	46.0%	60.0%	67.6%	32.6%	54.6%
Somewhat Positive	17.2%	13.2%	13.3%	16.3%	22.0%	0.0%	0.0%	27.9%	15.6%
Somewhat Negative	3.4%	6.6%	4.4%	7.0%	0.0%	10.0%	5.9%	11.6%	5.5%
Negative	1.1%	1.1%	0.0%	2.3%	2.0%	0.0%	0.0%	0.0%	1.0%
Strongly Negative	0.0%	2.2%	0.0%	0.0%	2.0%	0.0%	0.0%	2.3%	1.0%
Number Responding	87	91	45	43	50	10	34	43	403

* With the exception of two programs, these schools now comprise the College of Arts and Sciences. Degrees in Human Services and Liberal Studies are included with the Social Sciences.

4/22/2004

1994 Baccalaureate Graduates Nine Years Out Satisfaction



* With the exception of two programs, these schools now comprise the College of Arts and Sciences. Degrees in Human Services and Liberal Studies are included with the Social Sciences.

Southern Illinois University Edwardsville
Survey of 1994 Baccalaureate Graduates -- Nine Years Out
Survey Responses -- Part IV
Educational Effectiveness Questions

School Detail	BUS	EDUC	ENGR	NURS	FA *	HUM*	SCI*	SOC S*	Total
Number of Survey Respondents	87	92	45	43	50	10	34	43	404
15. Helpfulness of University Experiences in:									
A. Developing Critical Thinking Ability									
Extremely Helpful	8.0%	5.5%	13.3%	9.3%	20.0%	20.0%	11.8%	20.9%	11.7%
Very Helpful	54.0%	51.6%	55.6%	58.1%	34.0%	50.0%	35.3%	37.2%	48.1%
Moderately Helpful	31.0%	36.3%	24.4%	18.6%	36.0%	10.0%	38.2%	27.9%	30.5%
Slightly Helpful	6.9%	5.5%	2.2%	11.6%	8.0%	10.0%	8.8%	9.3%	7.2%
Not Helpful	0.0%	1.1%	4.4%	2.3%	2.0%	10.0%	5.9%	4.7%	2.5%
Number Responding	87	91	45	43	50	10	34	43	403
B. Developing Sense of Ethics									
Extremely Helpful	5.7%	5.5%	6.7%	9.3%	12.0%	0.0%	0.0%	23.8%	8.2%
Very Helpful	36.8%	34.1%	37.8%	51.2%	30.0%	40.0%	32.4%	23.8%	35.3%
Moderately Helpful	37.9%	37.4%	42.2%	23.3%	40.0%	30.0%	41.2%	28.6%	36.1%
Slightly Helpful	18.4%	14.3%	8.9%	14.0%	12.0%	0.0%	14.7%	16.7%	14.2%
Not Helpful	1.1%	8.8%	4.4%	2.3%	6.0%	30.0%	11.8%	7.1%	6.2%
Number Responding	87	91	45	43	50	10	34	42	402
C. Understanding People with Different Backgrounds, Habits, Values, Appearances and Abilities									
Extremely Helpful	13.8%	15.4%	8.9%	11.6%	30.0%	10.0%	5.9%	31.0%	16.4%
Very Helpful	34.5%	31.9%	26.7%	44.2%	32.0%	60.0%	38.2%	38.1%	35.1%
Moderately Helpful	36.8%	38.5%	35.6%	30.2%	30.0%	10.0%	29.4%	16.7%	32.1%
Slightly Helpful	13.8%	12.1%	13.3%	11.6%	8.0%	20.0%	23.5%	11.9%	13.2%
Not Helpful	1.1%	2.2%	15.6%	2.3%	0.0%	0.0%	2.9%	2.4%	3.2%
Number Responding	87	91	45	43	50	10	34	42	402
D. Becoming a More Active Citizen									
Extremely Helpful	3.4%	3.3%	0.0%	4.7%	4.0%	0.0%	0.0%	9.5%	3.5%
Very Helpful	18.4%	22.0%	25.0%	30.2%	20.0%	10.0%	17.6%	23.8%	21.7%
Moderately Helpful	40.2%	41.8%	34.1%	34.9%	40.0%	30.0%	38.2%	21.4%	36.9%
Slightly Helpful	24.1%	25.3%	20.5%	23.3%	24.0%	20.0%	26.5%	23.8%	23.9%
Not Helpful	13.8%	7.7%	20.5%	7.0%	12.0%	40.0%	17.6%	21.4%	14.0%
Number Responding	87	91	44	43	50	10	34	42	401
E. Improving Quality of Life (aside from financial benefits)									
Extremely Helpful	13.8%	9.9%	4.5%	11.6%	16.0%	30.0%	5.9%	16.7%	12.0%
Very Helpful	39.1%	31.9%	36.4%	44.2%	30.0%	30.0%	35.3%	33.3%	35.4%
Moderately Helpful	31.0%	37.4%	36.4%	18.6%	40.0%	10.0%	44.1%	23.8%	32.7%
Slightly Helpful	12.6%	13.2%	15.9%	20.9%	6.0%	20.0%	8.8%	16.7%	13.5%
Not Helpful	3.4%	7.7%	6.8%	4.7%	8.0%	10.0%	5.9%	9.5%	6.5%
Number Responding	87	91	44	43	50	10	34	42	401
F. Developing Reasoning Skills									
Extremely Helpful	9.2%	4.4%	11.1%	7.0%	20.0%	30.0%	11.8%	19.0%	11.2%
Very Helpful	56.3%	48.4%	55.6%	53.5%	38.0%	30.0%	41.2%	40.5%	48.3%
Moderately Helpful	29.9%	33.0%	26.7%	23.3%	32.0%	10.0%	29.4%	26.2%	28.9%
Slightly Helpful	4.6%	13.2%	4.4%	16.3%	8.0%	0.0%	11.8%	11.9%	9.5%
Not Helpful	0.0%	1.1%	2.2%	0.0%	2.0%	30.0%	5.9%	2.4%	2.2%
Number Responding	87	91	45	43	50	10	34	42	402

* With the exception of two programs, these schools now comprise the College of Arts and Sciences. Degrees in Human Services and Liberal Studies are included with the Social Sciences.

Southern Illinois University Edwardsville
Survey of 1994 Baccalaureate Graduates -- Nine Years Out
Survey Responses -- Part IV
Educational Effectiveness Questions

School Detail, con't.	BUS	EDUC	ENGR	NURS	FA *	HUM*	SCI*	SOC S*	Total
G. Viewing Problems from Different Perspectives									
Extremely Helpful	12.6%	11.0%	8.9%	16.3%	18.0%	30.0%	11.8%	26.2%	14.7%
Very Helpful	51.7%	40.7%	57.8%	44.2%	42.0%	40.0%	41.2%	40.5%	45.5%
Moderately Helpful	31.0%	31.9%	28.9%	23.3%	30.0%	10.0%	23.5%	21.4%	27.9%
Slightly Helpful	4.6%	14.3%	4.4%	16.3%	8.0%	0.0%	20.6%	7.1%	10.0%
Not Helpful	0.0%	2.2%	0.0%	0.0%	2.0%	20.0%	2.9%	4.8%	2.0%
Number Responding	87	91	45	43	50	10	34	42	402
H. Developing Ability to Solve Problems									
Extremely Helpful	10.3%	6.6%	15.6%	16.3%	16.0%	20.0%	5.9%	9.5%	11.2%
Very Helpful	54.0%	44.0%	68.9%	44.2%	32.0%	50.0%	50.0%	45.2%	48.3%
Moderately Helpful	31.0%	30.8%	13.3%	30.2%	48.0%	0.0%	32.4%	23.8%	29.6%
Slightly Helpful	4.6%	17.6%	2.2%	9.3%	2.0%	0.0%	11.8%	16.7%	9.2%
Not Helpful	0.0%	1.1%	0.0%	0.0%	2.0%	30.0%	0.0%	4.8%	1.7%
Number Responding	87	91	45	43	50	10	34	42	402
I. Making Informed Decisions as a Citizen									
Extremely Helpful	4.6%	4.4%	2.2%	9.3%	18.0%	30.0%	2.9%	16.7%	8.2%
Very Helpful	39.1%	36.3%	35.6%	30.2%	28.0%	20.0%	23.5%	31.0%	33.1%
Moderately Helpful	39.1%	31.9%	31.1%	39.5%	36.0%	0.0%	41.2%	28.6%	34.3%
Slightly Helpful	13.8%	23.1%	24.4%	18.6%	12.0%	30.0%	20.6%	16.7%	18.7%
Not Helpful	3.4%	4.4%	6.7%	2.3%	6.0%	20.0%	11.8%	7.1%	5.7%
Number Responding	87	91	45	43	50	10	34	42	402
J. Developing Writing Skills									
Extremely Helpful	21.8%	17.6%	4.4%	11.6%	28.0%	60.0%	11.8%	23.8%	18.9%
Very Helpful	48.3%	38.5%	35.6%	41.9%	36.0%	30.0%	23.5%	40.5%	39.1%
Moderately Helpful	21.8%	25.3%	37.8%	27.9%	20.0%	10.0%	26.5%	19.0%	24.6%
Slightly Helpful	8.0%	16.5%	17.8%	14.0%	14.0%	0.0%	29.4%	11.9%	14.4%
Not Helpful	0.0%	2.2%	4.4%	4.7%	2.0%	0.0%	8.8%	4.8%	3.0%
Number Responding	87	91	45	43	50	10	34	42	402
K. Developing Oral Communication Skills									
Extremely Helpful	16.1%	13.2%	2.2%	11.6%	34.0%	50.0%	8.8%	19.0%	16.2%
Very Helpful	54.0%	46.2%	33.3%	39.5%	40.0%	30.0%	23.5%	38.1%	41.8%
Moderately Helpful	26.4%	25.3%	35.6%	34.9%	18.0%	0.0%	26.5%	26.2%	26.4%
Slightly Helpful	3.4%	11.0%	24.4%	14.0%	8.0%	10.0%	32.4%	14.3%	12.9%
Not Helpful	0.0%	4.4%	4.4%	0.0%	0.0%	10.0%	8.8%	2.4%	2.7%
Number Responding	87	91	45	43	50	10	34	42	402
L. Developing Knowledge of Scientific and Technological Developments									
Extremely Helpful	2.3%	5.5%	22.2%	16.3%	16.0%	0.0%	20.6%	14.3%	11.2%
Very Helpful	36.8%	33.0%	55.6%	51.2%	16.0%	20.0%	44.1%	16.7%	35.1%
Moderately Helpful	49.4%	38.5%	20.0%	25.6%	32.0%	40.0%	29.4%	23.8%	34.3%
Slightly Helpful	10.3%	15.4%	2.2%	7.0%	26.0%	40.0%	2.9%	31.0%	14.4%
Not Helpful	1.1%	7.7%	0.0%	0.0%	10.0%	0.0%	2.9%	14.3%	5.0%
Number Responding	87	91	45	43	50	10	34	42	402
16. Undergraduate Education Broadened Interest Beyond Subjects in Major									
Strongly Agree	17.2%	8.7%	6.7%	7.0%	22.0%	40.0%	14.7%	21.4%	14.4%
Agree	51.7%	56.5%	64.4%	53.5%	38.0%	30.0%	47.1%	42.9%	50.9%
Neutral	28.7%	26.1%	20.0%	30.2%	26.0%	30.0%	23.5%	26.2%	26.3%
Disagree	2.3%	8.7%	8.9%	7.0%	14.0%	0.0%	8.8%	7.1%	7.4%
Strongly Disagree	0.0%	0.0%	0.0%	2.3%	0.0%	0.0%	5.9%	2.4%	1.0%
Number Responding	87	92	45	43	50	10	34	42	403

* With the exception of two programs, these schools now comprise the College of Arts and Sciences. Degrees in Human Services and Liberal Studies are included with the Social Sciences.

Southern Illinois University Edwardsville
Survey of 1994 Baccalaureate Graduates -- Nine Years Out
Survey Responses -- Part IV
Educational Effectiveness Questions

School Detail, con't.	BUS	EDUC	ENGR	NURS	FA *	HUM*	SCI*	SOC S*	Total
17. Importance of College Education to:									
A. Personal Life									
Very Important	57.5%	63.0%	42.2%	62.8%	58.0%	60.0%	44.1%	55.8%	56.4%
Moderately Important	27.6%	22.8%	28.9%	18.6%	20.0%	20.0%	41.2%	25.6%	25.5%
Slightly Important	11.5%	7.6%	20.0%	14.0%	18.0%	20.0%	2.9%	14.0%	12.4%
Not Important	3.4%	6.5%	8.9%	4.7%	4.0%	0.0%	11.8%	4.7%	5.7%
Number Responding	87	92	45	43	50	10	34	43	404
B. Community Life									
Very Important	21.8%	38.5%	17.8%	23.3%	26.0%	20.0%	11.8%	28.6%	25.6%
Moderately Important	36.8%	29.7%	28.9%	44.2%	44.0%	0.0%	38.2%	28.6%	34.3%
Slightly Important	27.6%	22.0%	33.3%	27.9%	16.0%	40.0%	26.5%	26.2%	25.6%
Not Important	13.8%	9.9%	20.0%	4.7%	14.0%	40.0%	23.5%	16.7%	14.4%
Number Responding	87	91	45	43	50	10	34	42	402
C. Professional Life									
Very Important	65.5%	78.3%	80.0%	81.4%	70.0%	60.0%	67.6%	59.5%	71.7%
Moderately Important	27.6%	14.1%	15.6%	16.3%	26.0%	20.0%	29.4%	21.4%	21.1%
Slightly Important	5.7%	4.3%	4.4%	2.3%	2.0%	10.0%	2.9%	7.1%	4.5%
Not Important	1.1%	3.3%	0.0%	0.0%	2.0%	10.0%	0.0%	11.9%	2.7%
Number Responding	87	92	45	43	50	10	34	42	403
18. Quality of SIUE Education Relative to That of Friends at Other Schools									
Among the Best	8.0%	14.1%	4.4%	7.0%	14.0%	0.0%	11.8%	14.0%	10.4%
Above Average	41.4%	35.9%	46.7%	44.2%	38.0%	50.0%	29.4%	27.9%	38.4%
Average	49.4%	42.4%	48.9%	44.2%	46.0%	40.0%	50.0%	39.5%	45.5%
Below Average	1.1%	6.5%	0.0%	4.7%	2.0%	10.0%	5.9%	16.3%	5.0%
Among the Worst	0.0%	1.1%	0.0%	0.0%	0.0%	0.0%	2.9%	2.3%	0.7%
Number Responding	87	92	45	43	50	10	34	43	404
19. Involvement Since Bachelor's Degree with:									
A. Organized, Formal, Career Related Learning (non-degree)									
Currently Involved	20.7%	42.4%	13.6%	37.2%	30.0%	10.0%	32.4%	28.6%	29.4%
Have Been Involved	62.1%	46.7%	61.4%	44.2%	38.0%	60.0%	58.8%	52.4%	52.2%
Never Involved	17.2%	10.9%	25.0%	18.6%	32.0%	30.0%	8.8%	19.0%	18.4%
Number Responding	87	92	44	43	50	10	34	42	402
B. Personal Enrichment Studies									
Currently Involved	11.6%	24.2%	11.1%	30.2%	28.0%	30.0%	17.6%	23.8%	20.7%
Have Been Involved	50.0%	46.2%	44.4%	46.5%	50.0%	60.0%	50.0%	47.6%	48.1%
Never Involved	38.4%	29.7%	44.4%	23.3%	22.0%	10.0%	32.4%	28.6%	31.2%
Number Responding	86	91	45	43	50	10	34	42	401
C. Professional Activities or Organizations									
Currently Involved	35.6%	44.0%	28.9%	41.9%	40.0%	10.0%	50.0%	31.0%	38.1%
Have Been Involved	37.9%	40.7%	53.3%	34.9%	36.0%	80.0%	38.2%	45.2%	41.5%
Never Involved	26.4%	15.4%	17.8%	23.3%	24.0%	10.0%	11.8%	23.8%	20.4%
Number Responding	87	91	45	43	50	10	34	42	402
D. Volunteer Work / Community Svc Activities or Organizations									
Currently Involved	34.5%	38.9%	22.2%	38.1%	40.0%	30.0%	23.5%	30.2%	33.7%
Have Been Involved	36.8%	46.7%	35.6%	35.7%	38.0%	30.0%	47.1%	44.2%	40.4%
Never Involved	28.7%	14.4%	42.2%	26.2%	22.0%	40.0%	29.4%	25.6%	25.9%
Number Responding	87	90	45	42	50	10	34	43	401

* With the exception of two programs, these schools now comprise the College of Arts and Sciences. Degrees in Human Services and Liberal Studies are included with the Social Sciences.

Southern Illinois University Edwardsville
Survey of 1994 Baccalaureate Graduates -- Nine Years Out
Survey Responses -- Part IV
Educational Effectiveness Questions

School Detail, con't.	BUS	EDUC	ENGR	NURS	FA *	HUM*	SCI*	SOC S*	Total
E. Social / Recreational Activities or Organizations									
Currently Involved	35.6%	32.2%	35.6%	48.8%	48.0%	20.0%	32.4%	34.9%	37.1%
Have Been Involved	43.7%	55.6%	46.7%	30.2%	40.0%	50.0%	50.0%	46.5%	45.8%
Never Involved	20.7%	12.2%	17.8%	20.9%	12.0%	30.0%	17.6%	18.6%	17.2%
Number Responding	87	90	45	43	50	10	34	43	402
F. Political Activities or Organizations									
Currently Involved	10.3%	8.9%	6.7%	7.0%	4.0%	10.0%	5.9%	20.9%	9.2%
Have Been Involved	19.5%	17.8%	20.0%	18.6%	20.0%	40.0%	14.7%	32.6%	20.6%
Never Involved	70.1%	73.3%	73.3%	74.4%	76.0%	50.0%	79.4%	46.5%	70.1%
Number Responding	87	90	45	43	50	10	34	43	402
G. Religious / Ethical Activities or Organizations									
Currently Involved	43.7%	46.7%	28.9%	39.5%	50.0%	20.0%	26.5%	39.5%	40.5%
Have Been Involved	28.7%	27.8%	46.7%	27.9%	24.0%	10.0%	47.1%	27.9%	30.8%
Never Involved	27.6%	25.6%	24.4%	32.6%	26.0%	70.0%	26.5%	32.6%	28.6%
Number Responding	87	90	45	43	50	10	34	43	402
H. Support or Participation in the Arts (music, drama, dance, art)									
Currently Involved	17.2%	15.6%	6.7%	11.6%	40.0%	30.0%	20.6%	20.9%	18.9%
Have Been Involved	34.5%	52.2%	40.0%	41.9%	34.0%	60.0%	38.2%	41.9%	41.5%
Never Involved	48.3%	32.2%	53.3%	46.5%	26.0%	10.0%	41.2%	37.2%	39.6%
Number Responding	87	90	45	43	50	10	34	43	402
20. The Three Issues Considered Most Important for SIUE									
A. Finding New Ways to Deliver Education									
Yes, One of the Three Most Important	19.5%	28.3%	22.2%	20.9%	26.0%	20.0%	17.6%	20.9%	22.8%
Number Responding	17	26	10	9	13	2	6	9	92
B. Adding Additional Graduate Programs									
Yes, One of the Three Most Important	17.2%	32.6%	17.8%	23.3%	28.0%	40.0%	26.5%	44.2%	27.0%
Number Responding	15	30	8	10	14	4	9	19	109
C. Enhancing Programs for Personal Enrichment									
Yes, One of the Three Most Important	12.6%	8.7%	8.9%	9.3%	12.0%	10.0%	11.8%	9.3%	10.4%
Number Responding	11	8	4	4	6	1	4	4	42
D. Enhancing Professional Development Opportunities									
Yes, One of the Three Most Important	48.3%	40.2%	57.8%	34.9%	46.0%	20.0%	67.6%	41.9%	46.0%
Number Responding	42	37	26	15	23	2	23	18	186
E. Holding Down the Cost of Tuition and Fees									
Yes, One of the Three Most Important	54.0%	67.4%	62.2%	81.4%	62.0%	60.0%	52.9%	60.5%	62.6%
Number Responding	47	62	28	35	31	6	18	26	253
F. Improving Students' Preparation for Employment									
Yes, One of the Three Most Important	70.1%	59.8%	73.3%	65.1%	74.0%	50.0%	64.7%	58.1%	65.8%
Number Responding	61	55	33	28	37	5	22	25	266
G. More Effectively Meeting the Training Needs of Employers									
Yes, One of the Three Most Important	42.5%	19.6%	24.4%	30.2%	24.0%	30.0%	14.7%	30.2%	27.7%
Number Responding	37	18	11	13	12	3	5	13	112
H. Becoming More Efficient and Cost Effective									
Yes, One of the Three Most Important	20.7%	33.7%	20.0%	32.6%	18.0%	20.0%	17.6%	20.9%	24.3%
Number Responding	18	31	9	14	9	2	6	9	98
I. Strengthening International Studies, Programs & Experiences									
Yes, One of the Three Most Important	14.9%	5.4%	11.1%	4.7%	10.0%	40.0%	17.6%	7.0%	10.6%
Number Responding	13	5	5	2	5	4	6	3	43

* With the exception of two programs, these schools now comprise the College of Arts and Sciences. Degrees in Human Services and Liberal Studies are included with the Social Sciences.



SURVEY OF 1994 BACCALAUREATE GRADUATES NINE YEARS AFTER GRADUATION

Most of the questions in this survey can be answered simply by circling the appropriate number. We hope you will give us your help and valuable input so that we can design programs that better serve the needs of SIUE students. PLEASE ANSWER THESE QUESTIONS ONLY IN REGARD TO THE SIUE UNDERGRADUATE DEGREE YOU RECEIVED IN 1994. Your individual responses to this questionnaire will be kept completely confidential. Thank you for your cooperation. Please return this survey in the envelope provided.

Please write in your student I.D. (Social Security #)

I. Employment

1. Are you currently employed (including self-employed)?

- | | |
|------------------|--|
| 1 Yes, full-time | 3 No, but <u>am</u> seeking employment |
| 2 Yes, part-time | 4 No, and <u>am not</u> seeking employment |

If you are NOT employed (responses 3 and 4), skip to *Section II*.

2. What is the Zip Code of your place of employment (e.g., your actual workplace, not corporate headquarters)? _____

3. How would you classify your primary employer?

- | | |
|--|--|
| 1 Self-employed or private practice | 6 Health agency (e.g., hospital, clinic) |
| 2 Business (industrial, commercial or service) | 7 Federal, state, or local government |
| 3 Professional firm (e.g., engineering, law) | 8 Armed services |
| 4 College or university | 9 Non-profit (non-government) |
| 5 Elementary/secondary school (including cooperatives) | 0 Other (please specify) _____ |

4. How satisfied are you with your current job?

- | | | |
|------------------|-------------------------|---------------------|
| 1 Very Satisfied | 3 Somewhat Satisfied | 5 Dissatisfied |
| 2 Satisfied | 4 Somewhat Dissatisfied | 6 Very Dissatisfied |

5. How closely related is your current job to your bachelor's degree major?

- | | | |
|-------------------|-----------|-------------|
| 1 Closely Related | 2 Related | 3 Unrelated |
|-------------------|-----------|-------------|

If you marked "3" (unrelated), is this by choice? 1 Yes 2 No

6. For how many different employers (companies, firms, agencies, schools, etc. — not individual "bosses") have you worked since you earned your bachelor's degree?

- | | |
|-------|-----------------|
| 1 One | 3 Three to six |
| 2 Two | 4 More than six |

7. What is your annual earned income before taxes in your current job? _____

8. From your current perspective, how well did your bachelor's degree prepare you for the career path you are following?

- | | | | | | |
|-------------|--------|--------------|----------------|----------|---------------|
| 1 Very Well | 2 Well | 3 Adequately | 4 Inadequately | 5 Poorly | 6 Very poorly |
|-------------|--------|--------------|----------------|----------|---------------|

9. Please circle on the lists below and on the next page both your primary **occupation** (what you do) and the **industry** in which you are employed (where you do it). *Although some occupations typically work within one industry, they may be employed in other industries also. An example would be a school nurse — Health: Registered Nurses (11) in Educational Services (15). Examples of the types of occupations contained in each category are provided in italics.*

Occupational Categories

- 01 Management** (*such as Executives, Financial Managers, Human Resources Managers, Sales & Agricultural Managers, Educational Administrators, Health Administrators*)
- 02 Business Operations** (*such as Buyers & Purchasing Agents; Insurance Claims Adjusters/Examiners; Human Resources, Training, & Labor Relations Specialists; Management Analysts*)
- 03 Financial Specialists** (*such as Accountants, Assessors, Appraisers, Financial & Credit Analysts, Underwriters, Loan Counselors/Officers*)
- 04 Computer Specialists** (*such as Computer & Information Scientists, Programmers, Software Specialists, Database & Network Administrators and System Analysts*)
- 05 Mathematical Scientists and Technicians** (*such as Mathematicians, Statisticians, Actuaries, & Mathematical Technicians*)
- 06 Architects, Surveyors, and Cartographers**
- 07 Engineers and Related Technicians** (*such as Agricultural, Civil, Computer Hardware, Electrical, Industrial, Mechanical, Materials & Construction Engineers and Technicians*)
- 08 Life and Physical Scientists and Technicians** (*such as Agricultural & Food Scientists, Biologists, Medical Scientists, Chemists, Physicists, Atmospheric & Environmental Scientists, and Related Technicians*)
- 09 Social Scientists** (*such as Economists, Psychologists, Market & Survey Researchers, Geographers, Historians, Sociologists, Anthropologists, Political Scientists & Urban Planners*)
- 10 Health: Doctors** (*such as Physicians & Surgeons, Dentists, Veterinarians, Optometrists, Podiatrists, and Chiropractors*)
- 11 Health: Registered Nurses**
- 12 Health: Therapists** (*such as Occupational, Physical, Recreational, & Speech Therapists*)
- 13 Health: Other Health Practitioners, Professionals, and Support Workers** (*such as Pharmacists, Dieticians, Physician Assistants, and all other Technicians/Assistants/Aides*)
- 14 Community and Social Service** (*such as Counselors, Social Workers, Community & Religious Workers, Probation Officers*)
- 15 Legal: Attorneys/Judges**
- 16 Legal: Legal Support Workers** (*such as Inspectors & Examiners, Legal Assistants, Safety & Health Inspectors*)
- 17 Education: Early Childhood Teachers** (*such as Day Care, Pre-School, and Kindergarten Teachers*)
- 18 Education: Elementary School Teachers**
- 19 Education: Middle School Teachers**
- 20 Education: Secondary School Teachers**
- 21 Education: Special Education Teachers**
- 22 Education: Other, except Administrators (see #1 above)** (*such as Postsecondary Teachers, Vocational Teachers, Teaching & Research Assistants, School Counselors, Other Teachers, Training Specialists, Aides & Assistants*)
- 23 Library Occupations** (*such as Librarians, Archivists, Curators, and Library Technicians*)
- 24 Arts and Design Workers** (*such as Designers and Fine & Craft Artists*)
- 25 Entertainment, Performers, Sports and Related Workers** (*such as Musicians, Singers, Dancers, Actors, Producers, Directors, Composers, Athletes, Coaches, & Referees*)
- 26 Media and Communication Workers** (*such as Writers & Editors, Announcers, News Analysts & Reporters, Public Relation Specialists, and Media & Communication Equipment Workers*)
- 27 Sales** (*such as Real Estate, Retail, Insurance, & Securities Sales Agents; Wholesale & Manufacturing Sales Representatives; Telemarketers*)
- 28 Office and Administration** (*such as Clerical & Support Personnel, Clerks, Claims Examiners, Tellers, Scheduling & Distribution Agents*)
- 29 Protective Services** (*such as Fire Fighters, Correctional Officers, Police, Life Guards, Security Guards, Investigators*)
- 30 Food Preparation and Serving** (*such as Cooks, Bartenders, Food Service Workers & Servers*)
- 31 Buildings and Grounds Maintenance** (*such as Janitors, Cleaners, Landscaping & Groundskeeping Laborers*)
- 32 Personal Care and Services** (*such as Flight Attendants, Child Care Workers, Hairstylists & Personal Care Workers, Hotel & Travel Industry Workers*)
- 33 Farming, Fishing, and Forestry** (*such as Farm Workers, Animal Care Workers, Foresters, Loggers*)
- 34 Construction and Extractive** (*such as Carpenters; Electricians; Painters; Construction, Oil & Mining Workers; Plumbers*)
- 35 Installation, Maintenance, and Repair** (*such as Telecommunications Workers; Automotive Repairers; Heating, Air Conditioning & Refrigeration Mechanics & Installers*)
- 36 Production** (*such as Electrical & Electronic Equipment Assemblers; Food, Metal, Plastics, Printing, & Photography Industry Technicians & Workers*)
- 37 Transportation and Material Moving** (*such as Pilots, Drivers, Air Traffic Controllers*)
- 38 Military** (*Officers & Enlisted Personnel*)

Please write in your actual job title _____ (optional)

Industrial Categories

- 01 Agriculture, Forestry, and Fishing
- 02 Mining
- 03 Utilities
- 04 Construction
- 05 Manufacturing
- 06 Wholesale Trade
- 07 Retail Trade
- 08 Transportation
- 09 Information
- 10 Finance and Insurance
- 11 Real Estate and Rental and Leasing
- 12 Professional, Scientific and Technical Services
- 13 Management of Companies and Enterprises
- 14 Administrative and Support, Waste Management and Remediation Services
- 15 Educational Services
- 16 Health Care and Social Assistance
- 17 Arts, Entertainment and Recreation
- 18 Accommodations and Food Services
- 19 Other Services (except Public Administration)
- 20 Public Administration

II. Education

10. Since completing your bachelor's degree, have you earned one or more additional post-secondary degrees?

- 1 Yes 2 No

If you have completed an additional degree, please indicate all of the additional degrees you have earned since your bachelor's degree:

- | | |
|--|--|
| 01 Associate's | 06 Health Professional (dentistry,
pharmacy, podiatry, optometry, etc.) |
| 02 Second Bachelor's | 07 Theology/Divinity |
| 03 Academic Master's (MA, MS, MEd, etc.) | 08 Law (LLB, JD) |
| 04 Professional Master's (MBA, MSW, MFA,
MPA, etc.) or Education Specialist | 09 Doctorate (PhD, EdD, DA, DBA, etc.) |
| 05 Medicine (MD, DO) | 10 Other, please specify: |

11. Are you currently pursuing a postsecondary degree program? _____

- 1 Yes, full-time 2 Yes, part-time 3 No

If you are currently pursuing a degree, please indicate which degree below:

- | | |
|--|--|
| 01 Associate's | 06 Health Professional (dentistry,
pharmacy, podiatry, optometry, etc.) |
| 02 Second Bachelor's | 07 Theology/Divinity |
| 03 Academic Master's (MA, MS, MEd, etc.) | 08 Law (LLB, JD) |
| 04 Professional Master's (MBA, MSW, MFA,
MPA, etc.) or Education Specialist | 09 Doctorate (PhD, EdD, DA, DBA, etc.) |
| 05 Medicine (MD, DO) | 10 Other, please specify: |

12. In general, how well did your bachelor's degree program prepare you for your additional ~~degree program?~~ _____

- 1 Very Well 2 Well 3 Adequately 4 Inadequately 5 Poorly 6 Very poorly

III. Satisfaction

13. What is your present attitude towards the University?

1 Strongly Positive 2 Positive 3 Somewhat Positive 4 Somewhat Negative 5 Negative 6 Strongly Negative

14. What is your present attitude towards your bachelor's degree major?

1 Strongly Positive 2 Positive 3 Somewhat Positive 4 Somewhat Negative 5 Negative 6 Strongly Negative

IV. Educational Effectiveness

15. Listed below are some abilities often mentioned as important for personal and professional success in the next century. In your view, how effective were your University experiences in —

	Extremely Helpful	Very Helpful	Moderately Helpful	Slightly Helpful	Not Helpful
A. helping you to better develop your critical thinking ability?	1	2	3	4	5
B. helping you to better develop your sense of ethics?	1	2	3	4	5
C. contributing to a greater understanding of people with different backgrounds, habits, values, appearances, and abilities?	1	2	3	4	5
D. helping you to become a more active citizen?	1	2	3	4	5
E. improving the quality of your life aside from financial benefits?	1	2	3	4	5
F. helping you to better develop your reasoning skills?	1	2	3	4	5
G. helping you to better develop your capacity to view problems from different perspectives?	1	2	3	4	5
H. helping you to better develop your ability to solve problems?	1	2	3	4	5
I. helping you to better develop your ability to make informed decisions as a citizen?	1	2	3	4	5
J. helping you to better develop your writing skills?	1	2	3	4	5
K. helping you to better develop your oral communication skills?	1	2	3	4	5
L. helping you to better develop your knowledge of scientific and technological developments?	1	2	3	4	5

16. My SIUE undergraduate education broadened my interest in issues beyond the subjects in my major.

1 Strongly Agree 2 Agree 3 Neutral 4 Disagree 5 Strongly Disagree

17. How important has your college education been to your —

	Very Important	Moderately Important	Slightly Important	Not Important
A. Personal Life	1	2	3	4
B. Community Life	1	2	3	4
C. Professional Life	1	2	3	4

18. How would you rate the quality of the education that you received from SIUE relative to the education that your friends and colleagues have received from other colleges or universities?

1 Among the Best 2 Above Average 3 Average 4 Below Average 5 Among the worst

19. Please indicate your involvement with each of the following since completing your bachelor's degree:

	Currently Involved	Have Been Involved	Never Involved
A. Organized, formal learning that is career related (non-degree)	1	2	3
B. Personal enrichment studies	1	2	3
C. Professional activities or organizations	1	2	3
D. Volunteer work / community service activities or organizations	1	2	3
E. Social/recreational activities or organizations	1	2	3
F. Political activities or organizations	1	2	3
G. Religious/ethical activities or organizations	1	2	3
H. Support or participation in the Arts (<i>music, drama, dance, art</i>)	1	2	3

20. Listed below are some issues which the University will face in the next few years. Which three issues do you consider to be the most important for the University to address?

Please circle three items.

- A. Finding new ways to deliver instruction
- B. Adding additional graduate programs
- C. Enhancing programs for personal enrichment
- D. Enhancing professional development opportunities
- E. Holding down the cost of tuition and fees
- F. Improving students' preparation for employment
- G. More effectively meeting the training needs of employers
- H. Becoming more efficient and cost effective
- I. Strengthening international studies, programs, and experiences