

**Southern Illinois University at Edwardsville**  
**Survey of 2010 Baccalaureate Graduates -- One Year Out**

*Survey Results for Schools*

June 2012

Survey Administered By  
The Office of Undergraduate Assessment and Program Review

Survey Results Compiled By  
The Office of Institutional Research and Studies

# Southern Illinois University at Edwardsville Survey of 2010 Baccalaureate Graduates -- One Year Out

## Contents

### Introduction

### Methodology

### Survey Population and Respondents

- Charts: *2010 Baccalaureate Recipients, Profile*
- \$ *Gender*
  - \$ *Race/Ethnic*
  - \$ *Age at Graduation*
  - \$ *Matriculation Status*
  - \$ *Time to Degree for New Freshmen*
  - \$ *Time to Degree for New Transfers*

- Table: *Comparison of All Graduates to Survey Respondents*

### Survey Results

- Charts: *2010 Baccalaureate Graduates One Year Out, Satisfaction*
- \$ *Present Attitude Toward the University*
  - \$ *Present Attitude Towards Alumni=s Bachelor=s Degree Major*
  - \$ *Quality of SIUE Education Relative to That of Friends at Other Schools*

- 2010 Baccalaureate Graduates One Year Out, Additional Education*
- \$ *Enrolled Since Bachelors Degree*
  - \$ *How Well Bachelor=s Degree Prepared Alumni for Additional Degree*

- 2010 Baccalaureate Graduates One Year Out, Employment*
- \$ *Employment Status*
  - \$ *Place of Employment*
  - \$ *Job in Field Related to Major?*
  - \$ *Job Satisfaction*
  - \$ *How Well Bachelor=s Degree Program Prepared Alumni for Present Job*
  - \$ *Mean Salary of Alumni Employed Full Time*

- Helpfulness of University Experiences in:*
- \$ *Developing Critical Thinking Ability*
  - \$ *Developing Sense of Ethics*
  - \$ *Understanding People with Different Backgrounds*
  - \$ *Becoming a more Active Citizen*
  - \$ *Improving Quality of Life (aside from financial benefits)*
  - \$ *Developing Reasoning Skills*
  - \$ *Viewing Problems from Different Perspectives*
  - \$ *Developing Ability to Solve Problems*
  - \$ *Making Informed Decisions as a Citizen*

- \$ *Developing Writing Skills*
- \$ *Developing Oral Communication Skills*
- \$ *Developing Knowledge of Scientific and Technological Developments*

Tables:

<i>Part I</i>	<i>Employment Questions</i>
<i>Part II</i>	<i>Education Questions</i>
<i>Part III</i>	<i>Satisfaction Questions</i>
<i>Part IV</i>	<i>Educational Practices Questions</i>
<i>Part V</i>	<i>Program Quality Questions</i>
<i>Part VI</i>	<i>Educational Effectiveness Questions</i>

## **Questionnaire**

**Southern Illinois University Edwardsville**  
**Survey of 2010 Baccalaureate Graduates -- One Year Out**

**Introduction**

This one-year out baccalaureate survey was done to provide data for the University's undergraduate program reviews and other planning uses, and to participate in the Illinois Board of Higher Education Baccalaureate Graduates Follow-up System.

<b>IBHE Survey Schedule and Population Definition</b>		
Survey Year	Survey Type	Survey Group
1992	One-Year Out Survey	Class of >91
1993	Five-Year Out Survey	Class of >88
1994	Ten-Year Out Survey	Class of >84
1995	One-Year Out Survey	Class of >94
1996	Five-Year Out Survey	Class of >91
1997	Nine-Year Out Survey	Class of >88
1998	One-Year Out Survey	Class of >97
1999	Five-Year Out Survey	Class of >94
2000	Nine-Year Out Survey	Class of >91
2001	One-Year Out Survey	Class of >00
2002	Five-Year Out Survey	Class of >97
2003	Nine-Year Out Survey	Class of >94
2004	One-Year Out Survey	Class of '03
2005	Five-Year Out Survey	Class of '00
2006	Nine-Year Out Survey	Class of '97
2007	One-Year Out Survey	Class of '06
2008	Five-Year Out Survey	Class of '03
2009	Nine-Year Out Survey	Class of '00
2010	One-Year Out Survey	Class of '09
2011	Five-Year Out Survey	Class of '06

After the first six years, the surveys were reviewed and changed, modifying some questions and value scales, and adding some additional questions.

The current survey was administered during the spring and summer of 2011 to calendar year 2010 baccalaureate graduates of SIUE. The questionnaire includes 18 questions common to all Illinois public universities. These are the first 18 questions in the survey, forming Parts I, II, III, and the beginning of Part IV (Employment Questions, Education Questions, Satisfaction Questions, and Educational Practices Questions). SIUE added to these one question on industry of employment and

three additional questions on educational practices, and appended two additional parts to the survey to add questions about program quality, and educational effectiveness. (A questionnaire is included in Appendix A.)

## **Methodology**

The survey questionnaire and a cover letter were adapted from the questionnaire and letter developed for previous surveys. SIUE Alumni Services provided current addresses for calendar year 2010 graduates as determined from institutional records. The survey was distributed in May 2011 to May 2010 baccalaureate graduates and in August 2011 to August 2010 and December 2010 baccalaureate graduates. Each envelope included a cover letter, a questionnaire, and a postage-paid, pre-addressed return envelope. Each questionnaire was stamped with a sequential, identifying number which was also stamped on a listing of the graduates (this aided in identifying the surveys when returned).

On April 22, 2011 approximately two weeks before the first set of surveys were to be mailed, a postcard was sent to the 1,413 May 2010 baccalaureate graduates, for whom addresses were available, notifying the alumni that they would be receiving a questionnaire and encouraging them to complete and return the survey. Surveys were mailed first class on May 9, 2011. On May 31, approximately three weeks after the survey was mailed and when the rate of survey returns had decreased, a follow-up postcard requesting that the survey be returned was mailed to each student who had not returned his or her survey. On June 13 a second wave mailing of the surveys was sent to the 940 remaining non-respondents.

The second distribution began with the preliminary postcard mailed on August 8, 2011 to the 706 August and December 2010 baccalaureate graduates with known addresses. Surveys were mailed first class to this group on August 22, 2011 with a follow-up post card mailed to non-responders on September 12, 2011. A second wave mailing of the survey was sent to 547 non-responders on September 23, 2011.

Returned surveys began arriving in mid-May and continued through the summer and fall, with a few arriving as late as March 2012. As the surveys came in, each was matched with the corresponding stamped listing. The students' names were then checked against the alphabetic list of alumni to verify (or, if the alumnus chose not to provide the identification number, to obtain) the student identification number. The student identification number was the key which allowed merging of survey data with administrative records (e.g., biographic, graduation, matriculation, and enrollment information).

**Southern Illinois University Edwardsville**  
**Survey of 2010 Baccalaureate Graduates -- One Year Out**

*Survey Population and Respondents*

	Number of Graduates
2010 Baccalaureate Degrees	2,191
Less persons who received 2 baccalaureate degrees	46
2010 Baccalaureate Graduates	2,145
Less Graduates with No Address Available *	24
Graduates Surveyed	2,121
Less Non-Deliverable Surveys	168
Less Non-Responding Graduates	1,357
Survey Respondents	596
Gross Response Rate (Respondents/Total Surveyed)	28.10%
Adjusted Response Rate (Respondents/Delivered Surveys)	30.52%

\* Includes deceased alumni, foreign addresses and known bad addresses.

**Southern Illinois University Edwardsville**  
**Survey of 2010 Baccalaureate Graduates -- One Year Out**

*Comparison of All Graduates to Survey Respondents*

School Detail	All Graduates					
	CAS	Bus	Educ	Engr	Nursing	Total
<b>Total</b>	846	437	449	185	228	2145
Female	52.4%	40.5%	81.7%	8.1%	85.5%	55.8%
Male	47.6%	59.5%	18.3%	91.9%	14.5%	44.2%
Missing Data	0.0%	0.0%	0.0%	0.0%	0.0%	0.0%
White, Non-Hispanic	80.3%	84.2%	84.4%	87.6%	85.1%	83.1%
Black, Non-Hispanic	10.8%	8.0%	8.9%	3.2%	5.7%	8.6%
Asian/Pacific Islander	2.4%	2.3%	2.0%	1.6%	2.2%	2.2%
American Indian/Alaskan Native	0.2%	0.2%	0.0%	0.0%	0.4%	0.2%
Hispanic	2.5%	0.9%	1.1%	0.5%	3.5%	1.8%
Non-Resident Alien	0.4%	0.5%	0.4%	3.2%	0.9%	0.7%
Missing Data	3.5%	3.9%	3.1%	3.8%	2.2%	3.4%
Age at Graduation	range	range	range	range	range	range
	median	median	median	median	median	median
	20 to 58	20 to 49	21 to 53	21 to 44	21 to 54	20 to 58
	23	23	23	23	23	23
Bachelor of Science	65.2%	75.3%	88.9%	97.3%	100.0%	78.7%
Bachelor of Music	1.9%	0.0%	0.0%	0.0%	0.0%	0.7%
Bachelor of Arts	25.2%	0.0%	11.1%	2.7%	0.0%	12.5%
Bachelor of Fine Arts	3.4%	0.0%	0.0%	0.0%	0.0%	1.4%
Bachelor of Sci in Accountancy	0.0%	24.7%	0.0%	0.0%	0.0%	5.0%
Bachelor of Liberal Studies	0.8%	0.0%	0.0%	0.0%	0.0%	0.3%
Bachelor of Social Work	3.4%	0.0%	0.0%	0.0%	0.0%	1.4%
Missing Data	0.0%	0.0%	0.0%	0.0%	0.0%	0.0%
Graduated Spring 2010	53.1%	49.4%	73.9%	54.1%	70.6%	58.6%
Graduated Summer 2010	18.9%	19.2%	8.9%	11.4%	2.2%	14.5%
Graduated Fall 2010	28.0%	31.4%	17.1%	34.6%	27.2%	26.9%
Missing Data	0.0%	0.0%	0.0%	0.0%	0.0%	0.0%
Matriculated as a New Freshman	48.7%	52.4%	50.1%	59.5%	43.4%	50.1%
Matriculated as a Transfer	49.5%	46.0%	47.2%	40.0%	55.3%	48.1%
Matriculated as a Non-Degree Student	0.0%	0.2%	0.0%	0.5%	0.0%	0.1%
Missing Data	1.8%	1.4%	2.7%	0.0%	1.3%	1.7%
Time to Degree for New Freshmen						
3 Years or Fewer	6.1%	13.1%	4.4%	6.4%	0.0%	6.7%
4 Years	47.1%	57.6%	57.3%	47.3%	64.6%	53.1%
5 Years	25.5%	16.6%	24.9%	32.7%	23.2%	24.0%
6 Years	10.2%	4.4%	4.9%	7.3%	5.1%	7.1%
7 Years	3.4%	2.6%	2.2%	1.8%	0.0%	2.5%
8 Years	2.7%	0.9%	1.8%	0.0%	2.0%	1.8%
9 Years	2.4%	0.4%	0.4%	0.9%	1.0%	1.3%
10 Years	0.7%	0.4%	0.0%	0.9%	0.0%	0.5%
11 Years or More	1.9%	3.9%	4.0%	2.7%	4.0%	3.1%
Missing Data	0.0%	0.0%	0.0%	0.0%	0.0%	0.0%
Time to Degree for Transfers						
2 or Fewer Years	26.0%	41.8%	32.1%	25.7%	26.2%	30.3%
3 Years	37.0%	32.8%	37.3%	36.5%	36.5%	36.1%
4 Years	18.4%	13.4%	19.8%	18.9%	23.0%	18.3%
5 Years	6.4%	5.5%	3.3%	8.1%	5.6%	5.6%
6 Years	5.0%	1.5%	3.8%	2.7%	3.2%	3.7%
7 Years	2.4%	0.0%	0.0%	5.4%	3.2%	1.7%
8 Years	0.7%	1.0%	0.5%	0.0%	0.0%	0.6%
9 Years	0.7%	1.5%	0.0%	0.0%	0.0%	0.6%
10 Years or More	3.3%	2.5%	3.3%	2.7%	2.4%	3.0%
Missing Data	0.0%	0.0%	0.0%	0.0%	0.0%	0.0%
Graduating GPA (4 point scale)	Mean	Mean	Mean	Mean	Mean	Mean
	3.163	3.119	3.406	3.040	3.331	3.212
	Std Dev	Std Dev	Std Dev	Std Dev	Std Dev	Std Dev
	0.478	0.402	0.412	0.431	0.373	0.452

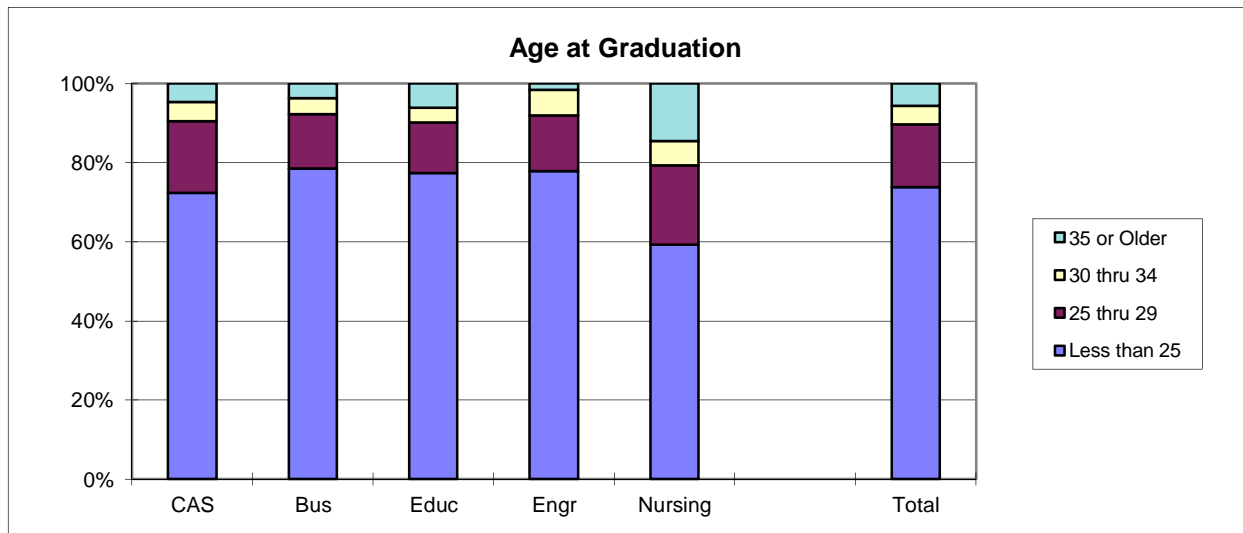
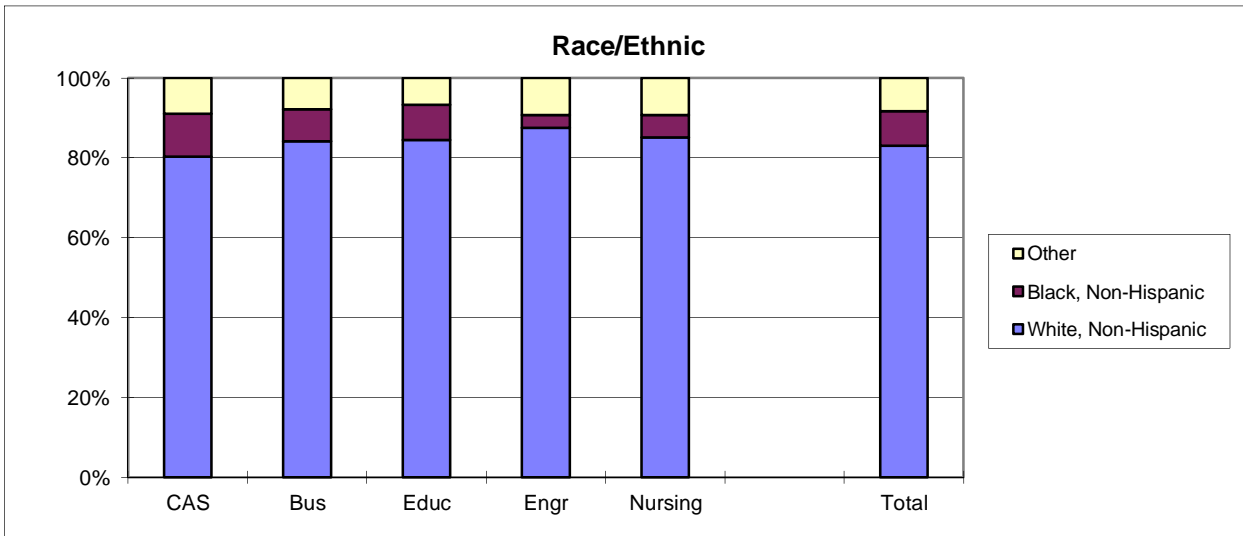
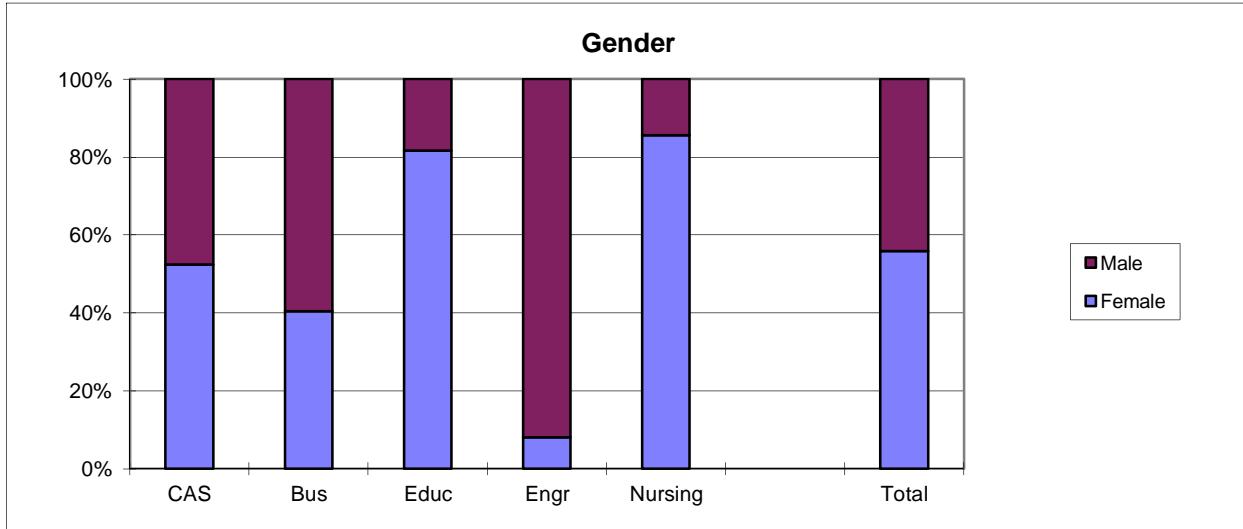
**Southern Illinois University Edwardsville**  
**Survey of 2010 Baccalaureate Graduates -- One Year Out**

*Comparison of All Graduates to Survey Respondents, cont.*

School Detail	All One Year Out Survey Respondents						
	CAS	Bus	Educ	Engr	Nursing	Total	
<b>Total</b>	206	132	134	51	73	596	
Female	60.7%	51.5%	88.8%	11.8%	87.7%	64.1%	
Male	39.3%	48.5%	11.2%	88.2%	12.3%	35.9%	
Missing Data	0.0%	0.0%	0.0%	0.0%	0.0%	0.0%	
White, Non-Hispanic	82.5%	87.1%	90.3%	90.2%	83.6%	86.1%	
Black, Non-Hispanic	8.3%	3.8%	4.5%	3.9%	4.1%	5.5%	
Asian/Pacific Islander	1.0%	3.8%	0.0%	2.0%	2.7%	1.7%	
American Indian/Alaskan Native	0.0%	0.0%	0.0%	0.0%	0.0%	0.0%	
Hispanic	4.4%	0.0%	2.2%	0.0%	5.5%	2.7%	
Non-Resident Alien	0.0%	0.8%	0.0%	0.0%	0.0%	0.2%	
Missing Data	3.9%	4.5%	3.0%	3.9%	4.1%	3.9%	
Age at Graduation	range	20 to 58	21 to 40	21 to 46	21 to 34	21 to 54	20 to 58
	median	23	22	22	23	23	22
Bachelor of Science	64.6%	75.8%	87.3%	100.0%	100.0%	79.5%	
Bachelor of Music	2.9%	0.0%	0.0%	0.0%	0.0%	1.0%	
Bachelor of Arts	26.7%	0.0%	12.7%	0.0%	0.0%	12.1%	
Bachelor of Fine Arts	1.0%	0.0%	0.0%	0.0%	0.0%	0.3%	
Bachelor of Sci in Accountancy	0.0%	24.2%	0.0%	0.0%	0.0%	5.4%	
Bachelor of Liberal Studies	1.0%	0.0%	0.0%	0.0%	0.0%	0.3%	
Bachelor of Social Work	3.9%	0.0%	0.0%	0.0%	0.0%	1.3%	
Missing Data	0.0%	0.0%	0.0%	0.0%	0.0%	0.0%	
Graduated Spring 2010	58.3%	43.9%	73.1%	60.8%	82.2%	61.6%	
Graduated Summer 2010	19.4%	22.0%	10.4%	7.8%	2.7%	14.9%	
Graduated Fall 2010	22.3%	34.1%	16.4%	31.4%	15.1%	23.5%	
Missing Data	0.0%	0.0%	0.0%	0.0%	0.0%	0.0%	
Matriculated as a New Freshman	47.6%	48.5%	51.5%	58.8%	54.8%	50.5%	
Matriculated as a Transfer	49.0%	50.0%	46.3%	41.2%	43.8%	47.3%	
Matriculated as a Non-Degree Student	0.0%	0.0%	0.0%	0.0%	0.0%	0.0%	
Missing Data	3.4%	1.5%	2.2%	0.0%	1.4%	0.0%	
Time to Degree for New Freshmen							
3 Years or Fewer	6.1%	12.5%	7.2%	0.0%	0.0%	6.3%	
4 Years	61.2%	67.2%	59.4%	50.0%	70.0%	62.1%	
5 Years	22.4%	9.4%	21.7%	40.0%	20.0%	20.9%	
6 Years	3.1%	4.7%	4.3%	6.7%	2.5%	4.0%	
7 Years	3.1%	1.6%	1.4%	3.3%	0.0%	2.0%	
8 Years	1.0%	1.6%	1.4%	0.0%	0.0%	1.0%	
9 Years	2.0%	0.0%	0.0%	0.0%	0.0%	0.7%	
10 Years	0.0%	0.0%	0.0%	0.0%	0.0%	0.0%	
11 Years or More	1.0%	3.1%	4.3%	0.0%	7.5%	3.0%	
Missing Data	0.0%	0.0%	0.0%	0.0%	0.0%	0.0%	
Time to Degree for Transfers							
2 or Fewer Years	22.8%	45.5%	38.7%	28.6%	21.9%	31.9%	
3 Years	33.7%	28.8%	38.7%	47.6%	43.8%	35.8%	
4 Years	15.8%	16.7%	14.5%	9.5%	21.9%	16.0%	
5 Years	7.9%	6.1%	0.0%	0.0%	0.0%	4.3%	
6 Years	6.9%	0.0%	4.8%	0.0%	3.1%	3.9%	
7 Years	2.0%	0.0%	0.0%	4.8%	3.1%	1.4%	
8 Years	2.0%	1.5%	0.0%	0.0%	0.0%	1.1%	
9 Years	0.0%	0.0%	0.0%	0.0%	0.0%	0.0%	
10 Years or More	8.9%	1.5%	3.2%	9.5%	6.3%	5.7%	
Missing Data	0.0%	0.0%	0.0%	0.0%	0.0%	0.0%	
Graduating GPA (4 point scale)	Mean	3.277	3.176	3.470	3.154	3.384	3.300
	Std Dev	0.462	0.391	0.414	0.396	0.374	0.434

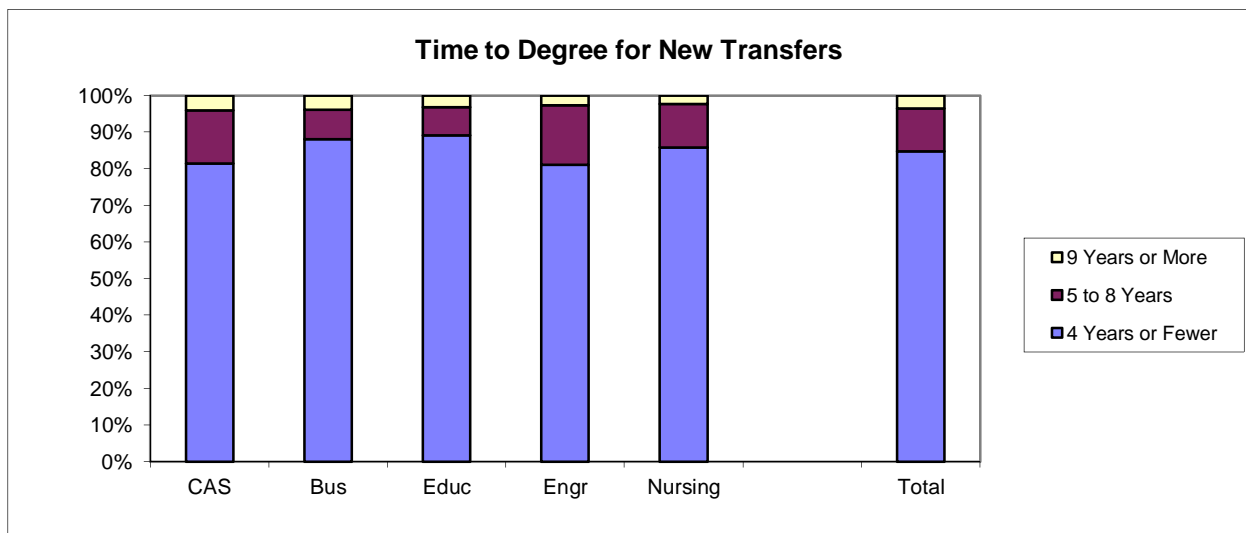
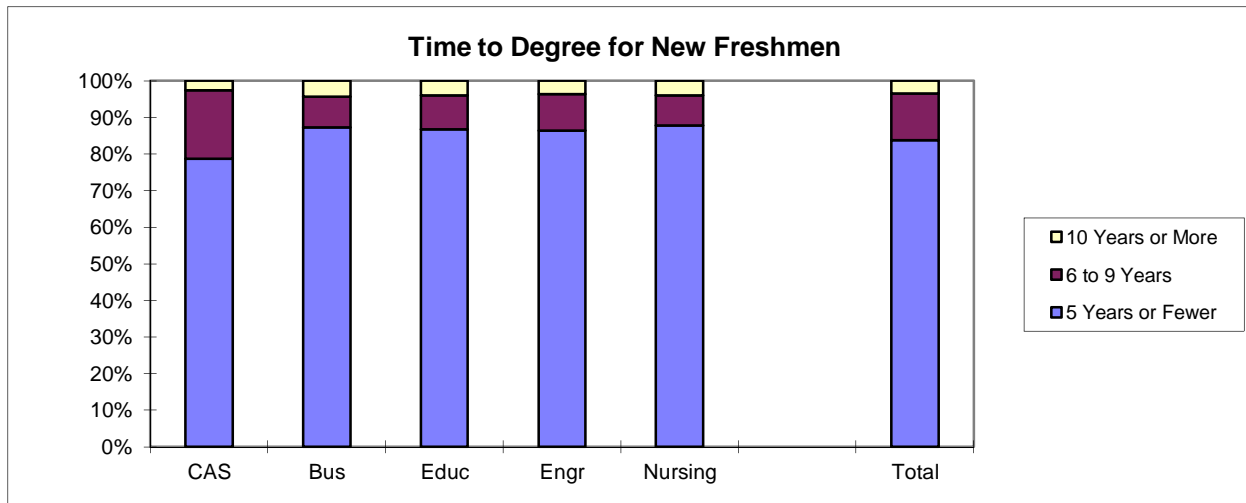
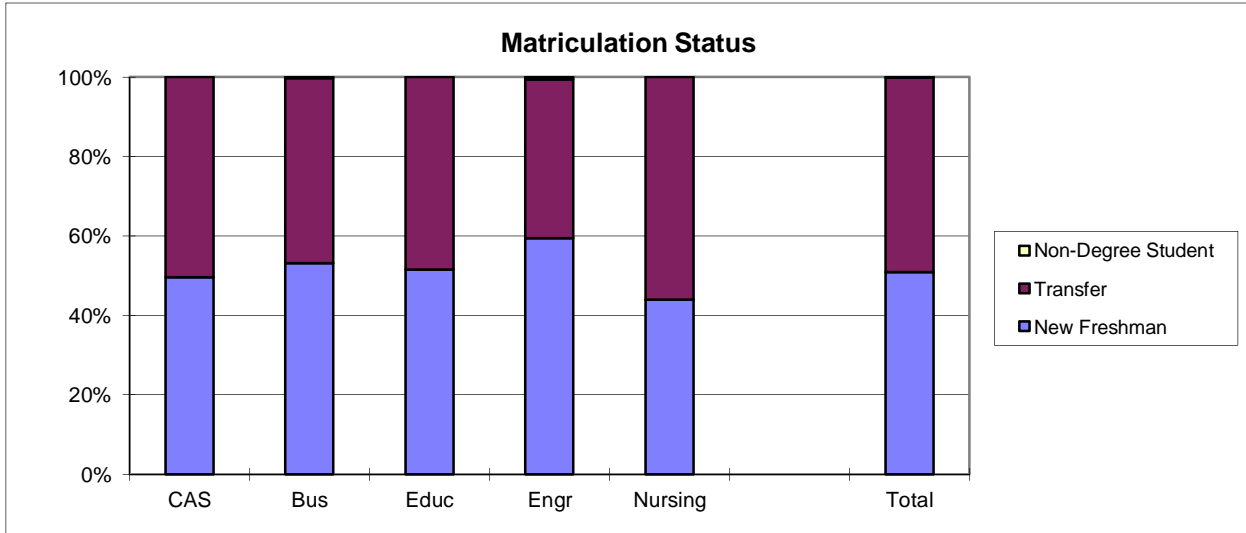


# 2010 Baccalaureate Recipients Profile



# 2010 Baccalaureate Recipients

## *Profile*, cont.



**Southern Illinois University Edwardsville**  
**Survey of 2010 Baccalaureate Graduates -- One Year Out**  
**Survey Responses -- Part I**  
*Employment Questions*

<b>School Detail</b>	<b>CAS</b>	<b>Bus</b>	<b>Educ</b>	<b>Engr</b>	<b>Nursing</b>	<b>Total</b>
Number of Survey Respondents *	206	132	134	51	73	596
1. Number Employed:						
Full-time	53.2%	74.2%	44.0%	86.3%	98.6%	64.2%
Part-time	22.4%	14.4%	32.8%	9.8%	0.0%	19.2%
Not, but Seeking	11.2%	9.1%	10.4%	3.9%	1.4%	8.7%
Not, not Seeking	13.2%	2.3%	12.7%	0.0%	0.0%	7.9%
Number Responding	205	132	134	51	73	595
<b>The remaining questions in Part I were to be answered only by respondents who were employed full-time or part-time.</b>						
	155	117	103	49	72	496
2. Place of Employment						
Illinois	70.6%	62.7%	82.8%	60.0%	45.6%	66.4%
Missouri	21.0%	27.3%	12.9%	35.6%	41.2%	25.3%
Other	8.4%	10.0%	4.3%	4.4%	13.2%	8.3%
Number Responding	143	110	93	45	68	459
3. Classification of Primary Employer						
Self-Employed or Private Practice	6.6%	7.8%	2.9%	2.0%	0.0%	4.7%
Business (Industrial, Commercial or Service)	34.2%	66.4%	18.4%	40.8%	1.4%	34.3%
Professional Firm (e.g., Engineering, Law)	3.3%	6.9%	1.0%	28.6%	0.0%	5.7%
College or University	9.9%	3.4%	9.7%	4.1%	0.0%	6.3%
Elementary/Secondary School	11.2%	0.9%	38.8%	0.0%	1.4%	12.0%
Health Agency (e.g. Hospital, Clinic)	7.9%	0.9%	5.8%	0.0%	91.7%	17.3%
Federal, State, or Local Government	8.6%	7.8%	9.7%	18.4%	4.2%	8.9%
Armed Services	0.7%	0.0%	0.0%	2.0%	1.4%	0.6%
NonProfit (Non-Government)	9.2%	3.4%	4.9%	2.0%	0.0%	4.9%
Other	8.6%	2.6%	8.7%	2.0%	0.0%	5.3%
Number Responding	152	116	103	49	72	492
4. Job Satisfaction						
Very Satisfied	20.3%	23.9%	33.0%	36.7%	36.1%	27.7%
Satisfied	35.3%	33.3%	23.3%	44.9%	45.8%	34.8%
Somewhat Satisfied	24.8%	24.8%	30.1%	8.2%	12.5%	22.5%
Somewhat Dissatisfied	6.5%	12.8%	6.8%	6.1%	4.2%	7.7%
Dissatisfied	7.8%	2.6%	3.9%	4.1%	1.4%	4.5%
Very Dissatisfied	5.2%	2.6%	2.9%	0.0%	0.0%	2.8%
Number Responding	153	117	103	49	72	494
5. Job in Field?						
Closely Related	32.5%	35.9%	52.0%	63.3%	87.5%	48.4%
Related	24.7%	41.9%	19.6%	22.4%	12.5%	25.7%
Unrelated (choice unknown)	0.6%	0.0%	0.0%	0.0%	0.0%	0.2%
Unrelated (by choice)	14.9%	5.1%	9.8%	2.0%	0.0%	8.1%
Unrelated (not by choice)	27.3%	17.1%	18.6%	12.2%	0.0%	17.6%
Number Responding	154	117	102	49	72	494
6. Timing of Securing First Job After Degree						
Held the Same Job While Enrolled	26.1%	26.5%	16.7%	26.5%	16.7%	22.9%
Secured Job by Graduation	15.7%	20.5%	12.7%	32.7%	54.2%	23.5%
Secured Job After Graduation (timing unknown)	0.7%	0.0%	2.0%	0.0%	0.0%	0.6%
Less than 1 Month After Graduation	2.6%	8.5%	4.9%	8.2%	9.7%	6.1%
1 to 3 Months After Graduation	12.4%	11.1%	23.5%	12.2%	11.1%	14.2%
3 to 6 Months After Graduation	18.3%	22.2%	21.6%	12.2%	4.2%	17.2%
6 to 9 Months After Graduation	13.7%	9.4%	11.8%	6.1%	1.4%	9.7%
More than 9 Months After Graduation	10.5%	1.7%	6.9%	2.0%	2.8%	5.7%
Number Responding	153	117	102	49	72	493

**Southern Illinois University Edwardsville**  
**Survey of 2010 Baccalaureate Graduates -- One Year Out**  
**Survey Responses -- Part I**  
*Employment Questions*

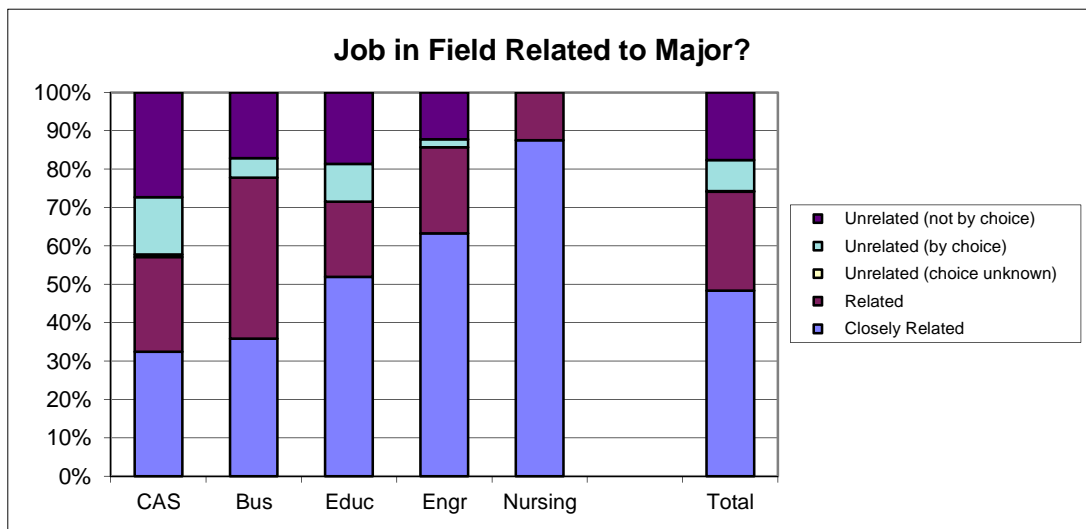
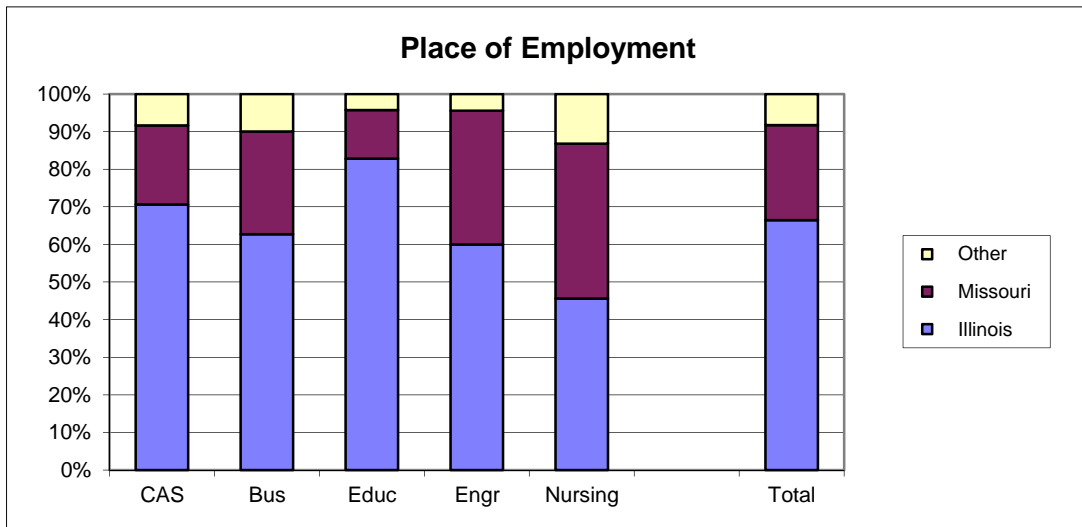
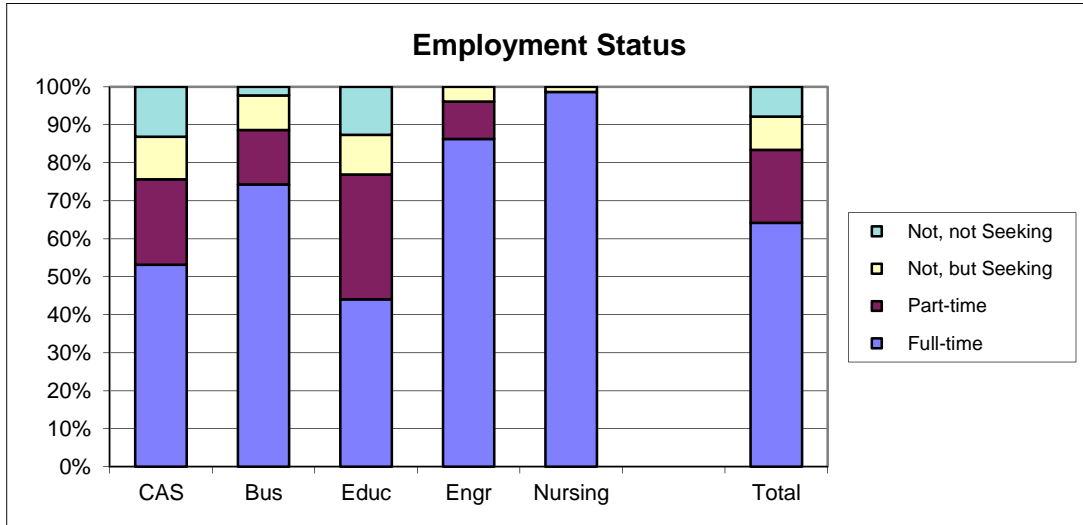
<b>School Detail, cont.</b>	<b>CAS</b>	<b>Bus</b>	<b>Educ</b>	<b>Engr</b>	<b>Nursing</b>	<b>Total</b>
<b>7. Annual Earned Income in Current Job Before Taxes</b>						
Employed Full-Time						
Less Than \$15,000	6.3%	1.1%	6.9%	0.0%	0.0%	3.1%
\$15,000 to 19,999	8.4%	1.1%	8.6%	0.0%	1.5%	4.3%
\$20,000 to \$24,999	16.8%	8.6%	13.8%	4.9%	0.0%	9.7%
\$25,000 to \$29,999	16.8%	16.1%	27.6%	4.9%	0.0%	13.9%
\$30,000 to \$34,999	20.0%	24.7%	27.6%	7.3%	6.2%	18.5%
\$35,000 to \$39,999	9.5%	19.4%	13.8%	9.8%	9.2%	12.8%
\$40,000 or More	22.1%	29.0%	1.7%	73.2%	83.1%	37.8%
Number Responding	95	93	58	41	65	352
Mean Salary	\$31,418	\$35,278	\$27,362	\$45,750	\$47,637	\$36,434
Employed Part-Time						
Less Than \$5,000	5.3%	0.0%	2.9%	0.0%	NA	3.2%
5,000 to \$9,999	23.7%	0.0%	26.5%	0.0%	NA	18.9%
\$10,000 to \$14,999	34.2%	31.6%	44.1%	50.0%	NA	37.9%
\$15,000 to \$19,999	28.9%	31.6%	11.8%	0.0%	NA	22.1%
\$20,000 or More	7.9%	36.8%	14.7%	50.0%	NA	17.9%
Number Responding	3800.0%	1900.0%	3400.0%	400.0%	NA	9500.0%
Mean Salary	\$12,572	\$22,305	\$12,659	\$18,750	NA	\$14,810
<b>8. Bachelor's Degree Preparation for Job</b>						
Very Well	19.3%	11.1%	22.8%	16.3%	29.2%	19.2%
Well	27.6%	35.0%	26.7%	49.0%	37.5%	32.9%
Adequately	31.7%	41.0%	37.6%	20.4%	33.3%	34.3%
Inadequately	11.0%	9.4%	5.9%	6.1%	0.0%	7.4%
Poorly	5.5%	2.6%	1.0%	4.1%	0.0%	2.9%
Very Poorly	4.8%	0.9%	5.9%	4.1%	0.0%	3.3%
Number Responding	145	117	101	49	72	484
<b>9a. Primary Occupation</b>						
Management	7.5%	16.7%	0.0%	4.2%	2.8%	7.1%
Business Operations	2.0%	15.8%	1.0%	0.0%	0.0%	4.6%
Financial Specialists	0.7%	30.7%	2.0%	2.1%	0.0%	8.1%
Computer Specialists	1.4%	4.4%	0.0%	14.6%	0.0%	2.9%
Mathematical Scientists and Technicians	0.0%	0.0%	1.0%	0.0%	0.0%	0.2%
Architects, Surveyors, and Cartographers	0.7%	0.0%	0.0%	2.1%	0.0%	0.4%
Engineers and Related Technicians	1.4%	0.0%	1.0%	58.3%	0.0%	6.5%
Life & Physical Scientists, and Technicians	4.1%	0.0%	0.0%	0.0%	0.0%	1.3%
Social Scientists	1.4%	0.0%	3.1%	0.0%	0.0%	1.0%
Health: Doctors	0.7%	0.0%	0.0%	0.0%	0.0%	0.2%
Health: Registered Nurses	0.0%	0.0%	0.0%	0.0%	97.2%	14.6%
Health: Theratpists	0.0%	0.9%	2.0%	0.0%	0.0%	0.6%
Health: Oth Practitnrs, Prof.s, & Suppt Wkrs	6.1%	0.9%	4.1%	2.1%	0.0%	3.1%
Community & Social Service	8.8%	0.9%	7.1%	0.0%	0.0%	4.4%
Legal: Attorneys/Judges	0.0%	0.0%	0.0%	0.0%	0.0%	0.0%
Legal: Legal Support Workers	0.7%	0.0%	1.0%	0.0%	0.0%	0.4%
Education: Early Childhood Teachers	2.0%	0.0%	10.2%	0.0%	0.0%	2.7%
Education: Elementary School Teachers	1.4%	0.0%	15.3%	0.0%	0.0%	3.5%
Education: Middle School Teachers	0.7%	0.0%	4.1%	0.0%	0.0%	1.0%
Education: Secondary School Teachers	8.2%	0.0%	1.0%	0.0%	0.0%	2.7%
Education: Special Education Teachers	0.7%	0.0%	12.2%	0.0%	0.0%	2.7%
Education: Other, except Administrators	7.5%	1.8%	8.2%	2.1%	0.0%	4.6%
continued						

**Southern Illinois University Edwardsville**  
**Survey of 2010 Baccalaureate Graduates -- One Year Out**  
**Survey Responses -- Part I**  
*Employment Questions*

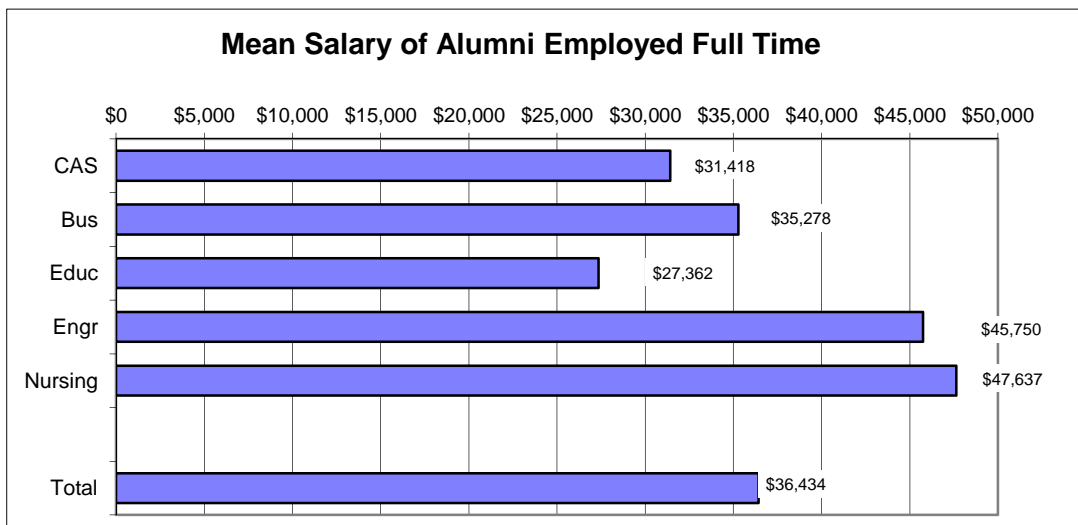
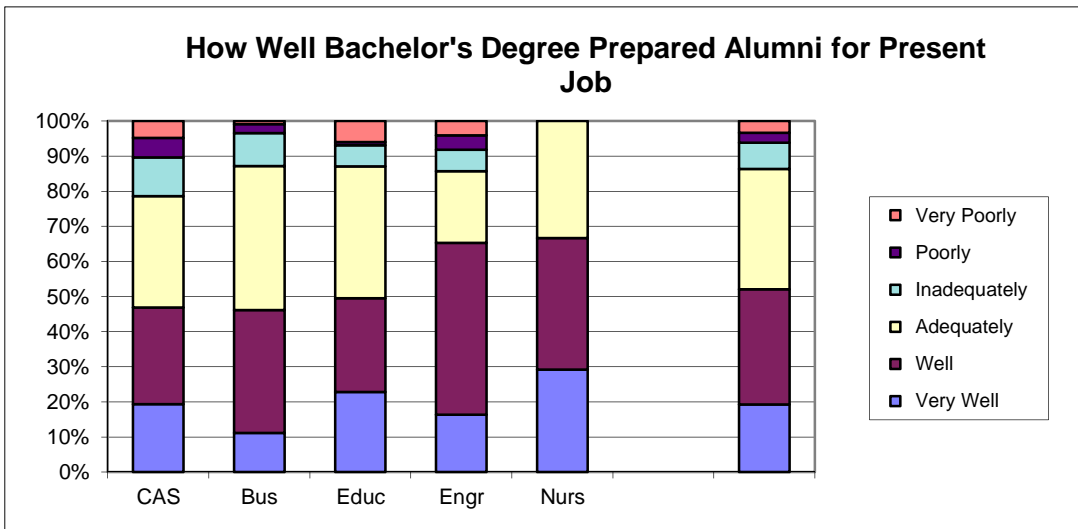
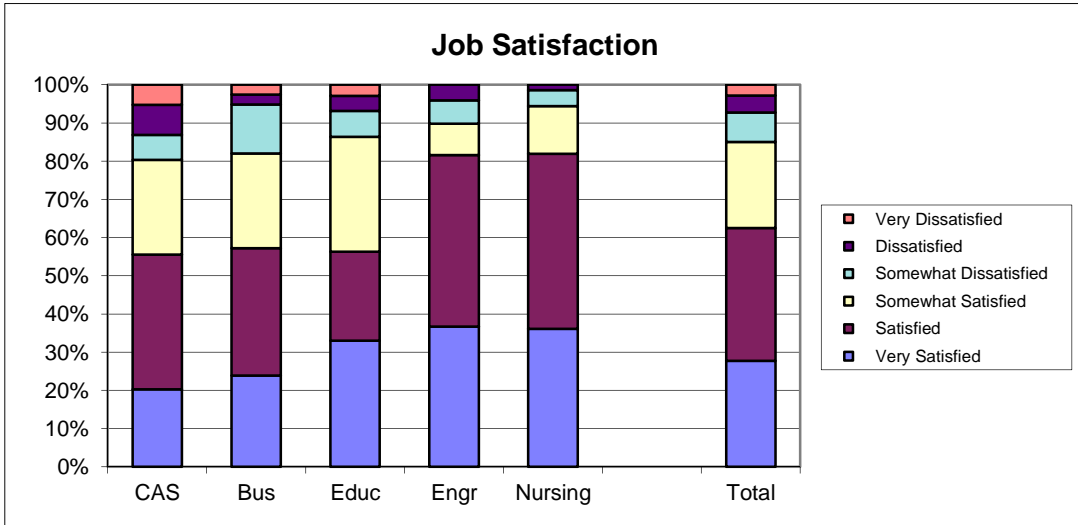
<b>School Detail, cont.</b>	<b>CAS</b>	<b>Bus</b>	<b>Educ</b>	<b>Engr</b>	<b>Nursing</b>	<b>Total</b>
9a. continuation of Primary Occupation						
Library Occupations	0.7%	0.0%	1.0%	0.0%	0.0%	0.4%
Art and Design Workers	1.4%	0.0%	0.0%	0.0%	0.0%	0.4%
Entertainment, Performers, Sports & Related	1.4%	0.0%	0.0%	0.0%	0.0%	0.4%
Media and Communication Workers	7.5%	0.9%	0.0%	0.0%	0.0%	2.5%
Sales	10.9%	7.9%	13.3%	4.2%	0.0%	8.4%
Office & Administration	10.2%	10.5%	5.1%	2.1%	0.0%	6.9%
Protective Services	4.1%	0.0%	2.0%	0.0%	0.0%	1.7%
Food Preparation & Serving	3.4%	5.3%	4.1%	0.0%	0.0%	3.1%
Buildings & Grounds Maintenance	0.7%	0.0%	0.0%	0.0%	0.0%	0.2%
Personal Care and Service	0.7%	0.0%	1.0%	0.0%	0.0%	0.4%
Farming, Fishing, and Forestry	0.0%	0.9%	0.0%	2.1%	0.0%	0.4%
Construction & Extractive	0.7%	2.6%	0.0%	2.1%	0.0%	1.0%
Installation, Maintenance, & Repair	0.0%	0.0%	0.0%	0.0%	0.0%	0.0%
Production	0.7%	0.0%	0.0%	0.0%	0.0%	0.2%
Transportation and Material Moving	1.4%	0.0%	0.0%	4.2%	0.0%	0.8%
Military	0.7%	0.0%	0.0%	0.0%	0.0%	0.2%
Number Responding	147	114	98	48	72	479
9b. Industry						
Agriculture, Forestry, and Fishing	0.0%	2.7%	0.0%	2.2%	0.0%	0.9%
Mining	0.7%	0.9%	0.0%	2.2%	0.0%	0.7%
Utilities	1.5%	0.0%	0.0%	6.5%	0.0%	1.2%
Construction	2.2%	5.5%	0.0%	28.3%	0.0%	5.2%
Manufacturing	4.4%	5.5%	1.4%	15.2%	0.0%	4.7%
Wholesale Trade	0.7%	1.8%	0.0%	0.0%	0.0%	0.7%
Retail Trade	10.4%	7.3%	9.7%	2.2%	0.0%	7.0%
Transportation	1.5%	3.6%	1.4%	4.3%	0.0%	2.1%
Information	3.0%	4.5%	0.0%	2.2%	0.0%	2.3%
Finance & Insurance	3.7%	21.8%	4.2%	6.5%	0.0%	8.2%
Real Estate & Rental & Leasing	0.0%	4.5%	0.0%	0.0%	0.0%	1.2%
Professional, Scientific & Technical Services	7.4%	6.4%	1.4%	21.7%	0.0%	6.6%
Management of Companies & Enterprises	0.0%	4.5%	0.0%	2.2%	0.0%	1.4%
Admin & Suppt, Waste Mgmt & Remedtn Svcs	1.5%	2.7%	1.4%	0.0%	0.0%	1.4%
Educational Services	21.5%	3.6%	45.8%	2.2%	0.0%	15.7%
Health Care & Social Assistance	14.1%	4.5%	19.4%	4.3%	100.0%	24.4%
Arts, Entertainment & Recreation	5.2%	0.0%	0.0%	0.0%	0.0%	1.6%
Accommodations & Food Services	4.4%	6.4%	5.6%	0.0%	0.0%	4.0%
Other Services (except Public Admin)	15.6%	10.9%	8.3%	0.0%	0.0%	9.1%
Public Administration	2.2%	2.7%	1.4%	0.0%	0.0%	1.6%
Number Responding	135	110	72	46	64	427

5/28/2012

# 2010 Baccalaureate Graduates One Year Out Employment



## 2010 Baccalaureate Graduates One Year Out *Employment, cont.*



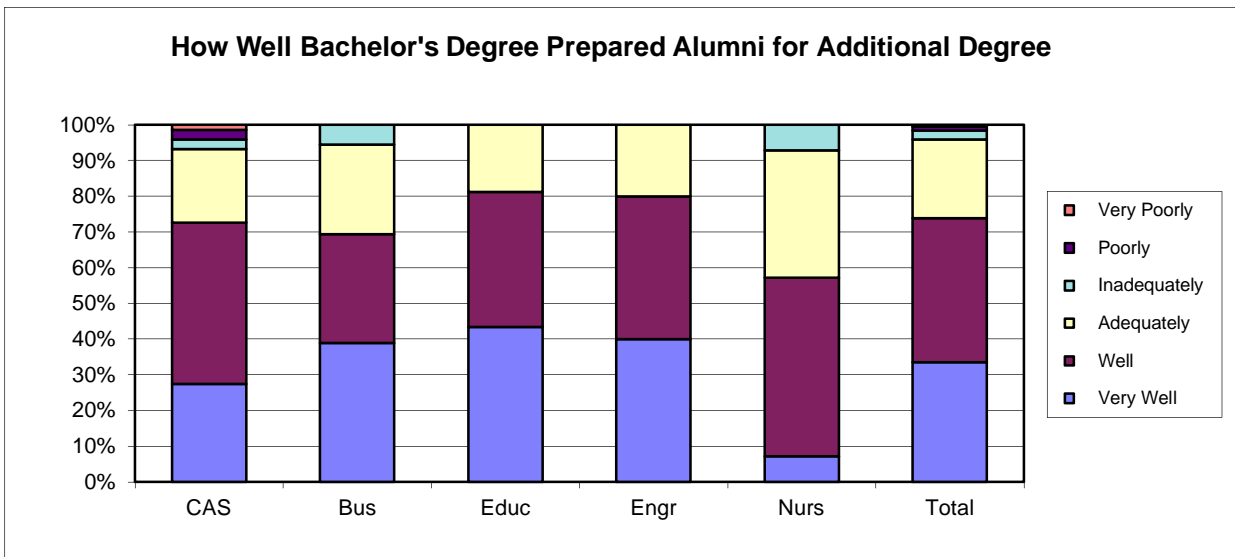
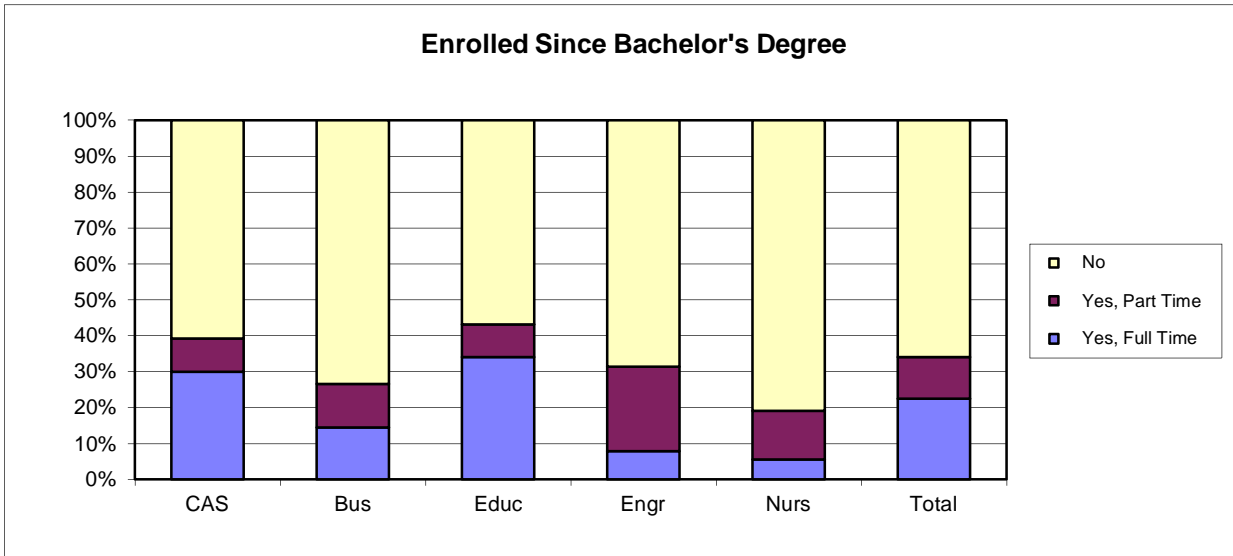
**Southern Illinois University Edwardsville**  
**Survey of 2010 Baccalaureate Graduates -- One Year Out**  
**Survey Responses -- Part II**  
*Education Questions*

<b>School Detail</b>	<b>CAS</b>	<b>Bus</b>	<b>Educ</b>	<b>Engr</b>	<b>Nursing</b>	<b>Total</b>
Number of Survey Respondents	206	132	134	51	73	596
10. Enrolled in College or University Since Degree?						
Yes, Full Time	29.9%	14.4%	34.1%	7.8%	5.5%	22.5%
Yes, Part Time	9.3%	12.1%	9.1%	23.5%	13.7%	11.7%
No	60.8%	73.5%	56.8%	68.6%	80.8%	65.9%
Number Responding	204	132	132	51	73	592
11. Pursuing or Have Completed an Additional Degree?						
Yes	100.0%	100.0%	100.0%	100.0%	100.0%	100.0%
No	0.0%	0.0%	0.0%	0.0%	0.0%	0.0%
Number Responding	75	37	53	15	14	194
<b>The remaining questions in Part II were to be answered only by respondents who were pursuing or had completed another degree.</b>						
	75	37	53	15	14	194
11b. Pursuing or Completed Which Degree?						
Associate's	4.1%	2.7%	0.0%	0.0%	0.0%	2.1%
Second Bachelor's	5.4%	5.4%	3.8%	6.7%	0.0%	4.7%
Academic Master's (MA, MS, MEd, etc)	40.5%	24.3%	71.2%	80.0%	23.1%	47.6%
Prof. Master's or Ed Specialist	23.0%	59.5%	17.3%	0.0%	38.5%	27.7%
Medicine (MD, OD)	5.4%	0.0%	0.0%	0.0%	0.0%	2.1%
Health Prof. (dentistry, pharmacy, etc.)	14.9%	0.0%	0.0%	0.0%	23.1%	7.3%
Theology/Divinity	2.7%	2.7%	0.0%	0.0%	0.0%	1.6%
Law (LLB, JD)	1.4%	2.7%	0.0%	0.0%	0.0%	1.0%
Doctorate (PhD, EdD, DA, DBA, etc.)	2.7%	0.0%	1.9%	6.7%	15.4%	3.1%
Other	0.0%	2.7%	5.8%	6.7%	0.0%	2.6%
Number Responding	74	37	52	15	13	191
12. How Well Bach. Degree Prepared You for Additional Degree						
Very Well	27.4%	38.9%	43.4%	40.0%	7.1%	33.5%
Well	45.2%	30.6%	37.7%	40.0%	50.0%	40.3%
Adequately	20.5%	25.0%	18.9%	20.0%	35.7%	22.0%
Inadequately	2.7%	5.6%	0.0%	0.0%	7.1%	2.6%
Poorly	2.7%	0.0%	0.0%	0.0%	0.0%	1.0%
Very Poorly	1.4%	0.0%	0.0%	0.0%	0.0%	0.5%
Number Responding	73	36	53	15	14	191

06/04/2012



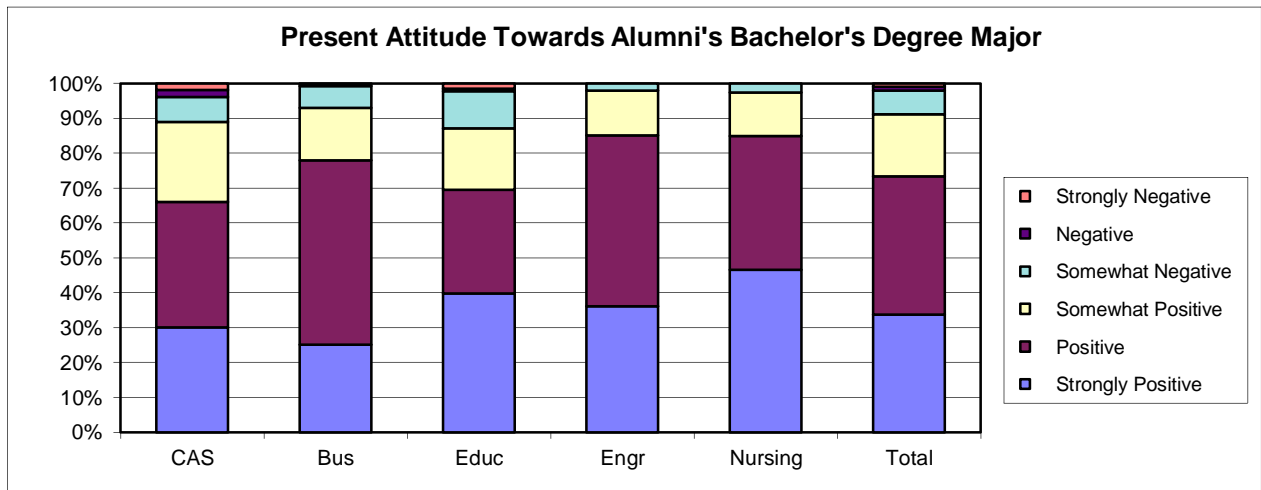
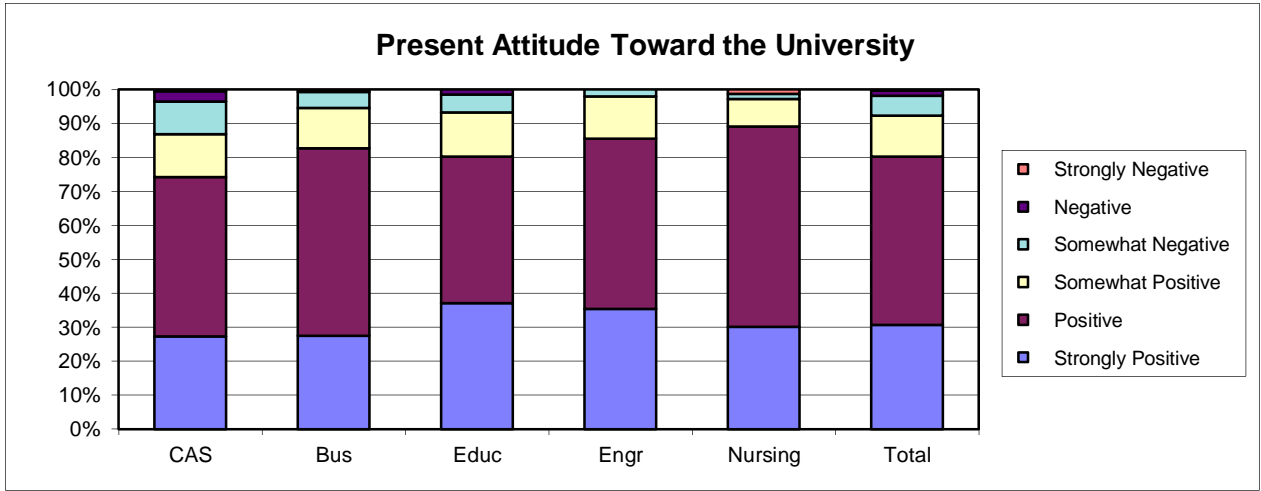
## 2010 Baccalaureate Graduates One Year Out Additional Education



**Southern Illinois University Edwardsville**  
**Survey of 2010 Baccalaureate Graduates -- One Year Out**  
**Survey Responses -- Part III**  
*Satisfaction Questions*

<b>School Detail</b>	<b>CAS</b>	<b>Bus</b>	<b>Educ</b>	<b>Engr</b>	<b>Nursing</b>	<b>Total</b>
Number of Survey Respondents	206	132	134	51	73	596
<b>13. Present Attitude Towards the University</b>						
Strongly Positive	27.3%	27.6%	37.1%	35.4%	30.1%	30.6%
Positive	47.0%	55.1%	43.2%	50.0%	58.9%	49.7%
Somewhat Positive	12.6%	11.8%	12.9%	12.5%	8.2%	11.9%
Somewhat Negative	9.6%	4.7%	5.3%	2.1%	1.4%	5.9%
Negative	3.0%	0.8%	1.5%	0.0%	0.0%	1.6%
Strongly Negative	0.5%	0.0%	0.0%	0.0%	1.4%	0.3%
Number Responding	198	127	132	48	73	578
<b>14. Present Attitude Towards your Bachelor's Degree Major</b>						
Strongly Positive	30.0%	25.2%	39.7%	36.2%	46.6%	33.7%
Positive	36.0%	52.8%	29.8%	48.9%	38.4%	39.6%
Somewhat Positive	23.0%	15.0%	17.6%	12.8%	12.3%	17.8%
Somewhat Negative	7.0%	6.3%	10.7%	2.1%	2.7%	6.7%
Negative	2.0%	0.8%	0.8%	0.0%	0.0%	1.0%
Strongly Negative	2.0%	0.0%	1.5%	0.0%	0.0%	1.0%
Number Responding	200	127	131	47	73	578
'06/05/2012						

## 2010 Baccalaureate Graduates One Year Out Satisfaction



**Southern Illinois University Edwardsville**  
**Survey of 2010 Baccalaureate Graduates -- One Year Out**  
**Survey Responses -- Part IV**  
*Educational Practices Questions*

<b>School Detail</b>	<b>CAS</b>	<b>Bus</b>	<b>Educ</b>	<b>Engr</b>	<b>Nursing</b>	<b>Total</b>
Number of Survey Respondents	206	132	134	51	73	596
15. Faculty in Major Were Accessible Outside of Class						
Very Often	46.8%	35.9%	41.0%	47.1%	28.8%	40.9%
Often	39.0%	48.1%	49.3%	41.2%	50.7%	44.9%
Sometimes	13.2%	15.3%	9.7%	9.8%	17.8%	13.1%
Infrequently	1.0%	0.8%	0.0%	2.0%	2.7%	1.0%
Never	0.0%	0.0%	0.0%	0.0%	0.0%	0.0%
Number Responding	205	131	134	51	73	594
16. In Major, Student was Expected to Work Cooperatively with Other Students						
Very Often	32.2%	52.7%	59.0%	52.0%	65.8%	48.6%
Often	38.5%	42.0%	31.3%	34.0%	27.4%	35.9%
Sometimes	22.4%	5.3%	7.5%	14.0%	4.1%	12.3%
Infrequently	6.8%	0.0%	2.2%	0.0%	2.7%	3.2%
Never	0.0%	0.0%	0.0%	0.0%	0.0%	0.0%
Number Responding	205	131	134	50	73	593
17. In Major, Faculty Encouraged Student to Challenge Ideas (student's, other students, and in readings & materials)						
Very Often	34.1%	19.8%	40.3%	21.6%	37.0%	31.6%
Often	36.1%	45.8%	37.3%	39.2%	38.4%	39.1%
Sometimes	23.9%	26.7%	19.4%	33.3%	20.5%	23.9%
Infrequently	5.4%	6.1%	3.0%	3.9%	4.1%	4.7%
Never	0.5%	1.5%	0.0%	2.0%	0.0%	0.7%
Number Responding	205	131	134	51	73	594
18. In Major, Faculty Used Appropriate Teaching Activities to Help Student Learn						
Very Often	30.6%	26.0%	39.8%	21.6%	17.8%	29.3%
Often	45.6%	59.5%	43.6%	56.9%	56.2%	50.5%
Sometimes	21.4%	13.0%	15.0%	19.6%	23.3%	18.2%
Infrequently	1.9%	1.5%	0.8%	2.0%	2.7%	1.7%
Never	0.5%	0.0%	0.8%	0.0%	0.0%	0.3%
Number Responding	206	131	133	51	73	594
19. In Major, Faculty had High Expectations for Quality Of Student Work						
Very Often	38.3%	32.8%	47.8%	31.4%	46.6%	39.7%
Often	44.7%	47.3%	40.3%	49.0%	41.1%	44.2%
Sometimes	14.6%	18.3%	11.2%	17.6%	12.3%	14.6%
Infrequently	2.4%	1.5%	0.7%	2.0%	0.0%	1.5%
Never	0.0%	0.0%	0.0%	0.0%	0.0%	0.0%
Number Responding	206	131	134	51	73	595
20. In Major, Faculty Provided Timely Feedback						
Very Often	32.0%	23.1%	34.6%	23.5%	23.3%	28.8%
Often	47.1%	51.5%	47.4%	64.7%	53.4%	50.4%
Sometimes	17.0%	20.0%	16.5%	11.8%	20.5%	17.5%
Infrequently	2.9%	5.4%	1.5%	0.0%	2.7%	2.9%
Never	1.0%	0.0%	0.0%	0.0%	0.0%	0.3%
Number Responding	206	130	133	51	73	593

**Southern Illinois University Edwardsville**  
**Survey of 2010 Baccalaureate Graduates -- One Year Out**  
**Survey Responses -- Part IV**  
*Educational Practices Questions*

<b>School Detail, cont.</b>	<b>CAS</b>	<b>Bus</b>	<b>Educ</b>	<b>Engr</b>	<b>Nursing</b>	<b>Total</b>
21. In Major, Faculty Encouraged Students' Questions and Discussion in Class						
Very Often	51.0%	45.0%	53.7%	49.0%	45.8%	49.5%
Often	35.0%	36.6%	35.1%	41.2%	41.7%	36.7%
Sometimes	9.7%	13.7%	10.4%	5.9%	11.1%	10.6%
Infrequently	3.9%	4.6%	0.7%	3.9%	1.4%	3.0%
Never	0.5%	0.0%	0.0%	0.0%	0.0%	0.2%
Number Responding	206	131	134	51	72	594
22. In Major, Student Spent Necessary Time and Energy to Come to Class Prepared						
Very Often	44.7%	37.4%	60.4%	45.1%	50.7%	47.4%
Often	44.7%	48.9%	29.1%	43.1%	39.7%	41.3%
Sometimes	9.7%	11.5%	10.4%	11.8%	9.6%	10.4%
Infrequently	1.0%	2.3%	0.0%	0.0%	0.0%	0.8%
Never	0.0%	0.0%	0.0%	0.0%	0.0%	0.0%
Number Responding	206	131	134	51	73	595
'06/05/2012						

**Southern Illinois University Edwardsville**  
**Survey of 2010 Baccalaureate Graduates -- One Year Out**  
**Survey Responses -- Part V**  
*Program Quality Questions*

<b>School Detail</b>	<b>CAS</b>	<b>Bus</b>	<b>Educ</b>	<b>Engr</b>	<b>Nursing</b>	<b>Total</b>
Number of Survey Respondents	206	132	134	51	73	596
23A. Quality of Major in Offering						
Sufficient Courses						
Excellent	25.4%	35.9%	49.3%	25.5%	46.6%	35.7%
Good	55.6%	54.2%	47.0%	56.9%	47.9%	52.5%
Fair	12.2%	9.9%	3.7%	17.6%	4.1%	9.3%
Poor	6.8%	0.0%	0.0%	0.0%	1.4%	2.5%
Number Responding	205	131	134	51	73	594
23B. Quality of Major in Offering						
Convenient Class Times						
Excellent	26.3%	31.3%	32.1%	17.6%	39.7%	29.6%
Good	43.9%	48.9%	48.5%	62.7%	50.7%	48.5%
Fair	21.5%	16.0%	17.9%	17.6%	9.6%	17.7%
Poor	8.3%	3.8%	1.5%	2.0%	0.0%	4.2%
Number Responding	205	131	134	51	73	594
23C. Quality of Major in Offering						
Logical Class Sequences						
Excellent	27.8%	37.4%	44.0%	29.4%	35.6%	34.7%
Good	49.3%	45.8%	44.8%	60.8%	47.9%	48.3%
Fair	18.0%	13.7%	9.7%	7.8%	16.4%	14.1%
Poor	4.9%	3.1%	1.5%	2.0%	0.0%	2.9%
Number Responding	205	131	134	51	73	594
24 Quality of Faculty in Major						
Excellent	52.7%	44.2%	56.9%	52.9%	36.1%	49.7%
Good	37.3%	49.6%	31.5%	37.3%	52.8%	40.7%
Fair	10.0%	5.4%	10.8%	7.8%	11.1%	9.1%
Poor	0.0%	0.8%	0.8%	2.0%	0.0%	0.5%
Number Responding	201	129	130	51	72	583
25 Grading Standards in Major Were:						
Too High	4.9%	3.8%	2.3%	3.9%	9.7%	4.6%
About Right	90.1%	92.3%	91.7%	94.1%	86.1%	90.8%
Too Low	4.9%	3.8%	6.1%	2.0%	4.2%	4.6%
Number Responding	203	130	132	51	72	588
'06/05/2012						

**Southern Illinois University Edwardsville**  
**Survey of 2010 Baccalaureate Graduates -- One Year Out**  
**Survey Responses -- Part VI**  
*Educational Effectiveness Questions*

School Detail	CAS	Bus	Educ	Engr	Nursing	Total
Number of Survey Respondents	206	132	134	51	73	596
<b>26. Helpfulness of University Experiences in:</b>						
<b>A. Developing Critical Thinking Ability</b>						
Extremely Helpful	22.1%	14.6%	17.9%	35.3%	19.2%	20.3%
Very Helpful	46.1%	42.3%	50.7%	37.3%	53.4%	46.5%
Moderately Helpful	25.0%	39.2%	30.6%	25.5%	27.4%	29.7%
Slightly Helpful	5.4%	3.1%	0.7%	2.0%	0.0%	2.9%
Not Helpful	1.5%	0.8%	0.0%	0.0%	0.0%	0.7%
Number Responding	204	130	134	51	73	592
<b>B. Developing Sense of Ethics</b>						
Extremely Helpful	19.6%	15.4%	19.4%	15.7%	26.0%	19.1%
Very Helpful	32.8%	43.1%	41.8%	39.2%	35.6%	38.0%
Moderately Helpful	29.9%	30.0%	32.1%	29.4%	30.1%	30.4%
Slightly Helpful	11.8%	10.0%	4.5%	9.8%	6.8%	9.0%
Not Helpful	5.9%	1.5%	2.2%	5.9%	1.4%	3.5%
Number Responding	204	130	134	51	73	592
<b>C. Understanding People with Different Backgrounds, Habits, Values, Appearances and Abilities</b>						
Extremely Helpful	28.9%	20.8%	34.3%	17.6%	23.3%	26.7%
Very Helpful	30.4%	33.1%	44.0%	31.4%	45.2%	36.0%
Moderately Helpful	24.5%	33.8%	17.2%	35.3%	28.8%	26.4%
Slightly Helpful	11.8%	10.0%	3.0%	11.8%	2.7%	8.3%
Not Helpful	4.4%	2.3%	1.5%	3.9%	0.0%	2.7%
Number Responding	204	130	134	51	73	592
<b>D. Becoming a More Active Citizen</b>						
Extremely Helpful	11.8%	6.9%	21.1%	15.7%	15.1%	13.5%
Very Helpful	25.0%	20.8%	27.1%	35.3%	42.5%	27.6%
Moderately Helpful	33.8%	42.3%	29.3%	29.4%	31.5%	34.0%
Slightly Helpful	16.7%	19.2%	18.0%	7.8%	9.6%	15.9%
Not Helpful	12.7%	10.8%	4.5%	11.8%	1.4%	9.0%
Number Responding	204	130	133	51	73	591
<b>E. Improving Quality of Life (aside from financial benefits)</b>						
Extremely Helpful	18.6%	10.8%	21.6%	21.6%	17.8%	17.7%
Very Helpful	32.4%	33.8%	34.3%	35.3%	35.6%	33.8%
Moderately Helpful	31.4%	34.6%	28.4%	23.5%	39.7%	31.8%
Slightly Helpful	7.8%	14.6%	11.2%	13.7%	6.8%	10.5%
Not Helpful	9.8%	6.2%	4.5%	5.9%	0.0%	6.3%
Number Responding	204	130	134	51	73	592
<b>F. Developing Reasoning Skills</b>						
Extremely Helpful	25.5%	13.8%	26.3%	33.3%	16.4%	22.7%
Very Helpful	44.1%	47.7%	45.9%	47.1%	49.3%	46.2%
Moderately Helpful	23.0%	31.5%	25.6%	17.6%	30.1%	25.9%
Slightly Helpful	4.9%	6.2%	1.5%	2.0%	4.1%	4.1%
Not Helpful	2.5%	0.8%	0.8%	0.0%	0.0%	1.2%
Number Responding	204	130	133	51	73	591

**Southern Illinois University Edwardsville**  
**Survey of 2010 Baccalaureate Graduates -- One Year Out**  
**Survey Responses -- Part VI**  
*Educational Effectiveness Questions*

<b>School Detail, cont.</b>	<b>CAS</b>	<b>Bus</b>	<b>Educ</b>	<b>Engr</b>	<b>Nursing</b>	<b>Total</b>
<b>G. Viewing Problems from Different Perspectives</b>						
Extremely Helpful	29.9%	22.3%	33.6%	41.2%	23.3%	29.2%
Very Helpful	41.2%	45.4%	50.0%	37.3%	43.8%	44.1%
Moderately Helpful	18.6%	26.2%	12.7%	17.6%	27.4%	19.9%
Slightly Helpful	8.3%	5.4%	3.7%	3.9%	5.5%	5.9%
Not Helpful	2.0%	0.8%	0.0%	0.0%	0.0%	0.8%
Number Responding	204	130	134	51	73	592
<b>H. Developing Ability to Solve Problems</b>						
Extremely Helpful	30.4%	20.8%	31.1%	47.1%	23.3%	29.0%
Very Helpful	38.2%	43.1%	52.3%	33.3%	47.9%	43.2%
Moderately Helpful	24.0%	28.5%	13.6%	17.6%	24.7%	22.2%
Slightly Helpful	5.9%	6.9%	3.0%	2.0%	4.1%	4.9%
Not Helpful	1.5%	0.8%	0.0%	0.0%	0.0%	0.7%
Number Responding	204	130	132	51	73	590
<b>I. Making Informed Decisions as a Citizen</b>						
Extremely Helpful	23.0%	16.2%	25.4%	21.6%	20.5%	21.6%
Very Helpful	33.3%	30.8%	39.6%	33.3%	30.1%	33.8%
Moderately Helpful	27.0%	40.0%	23.9%	25.5%	34.2%	29.9%
Slightly Helpful	10.8%	11.5%	9.0%	17.6%	15.1%	11.7%
Not Helpful	5.9%	1.5%	2.2%	2.0%	0.0%	3.0%
Number Responding	204	130	134	51	73	592
<b>J. Developing Writing Skills</b>						
Extremely Helpful	33.0%	20.8%	32.1%	15.7%	20.5%	27.1%
Very Helpful	28.6%	30.8%	35.8%	41.2%	43.8%	33.7%
Moderately Helpful	23.6%	31.5%	19.4%	27.5%	26.0%	25.0%
Slightly Helpful	10.3%	12.3%	10.4%	11.8%	8.2%	10.7%
Not Helpful	4.4%	4.6%	2.2%	3.9%	1.4%	3.6%
Number Responding	203	130	134	51	73	591
<b>K. Developing Oral Communication Skills</b>						
Extremely Helpful	35.8%	28.5%	29.9%	17.6%	23.9%	29.8%
Very Helpful	27.9%	40.0%	41.0%	31.4%	40.8%	35.4%
Moderately Helpful	22.1%	22.3%	20.1%	43.1%	29.6%	24.4%
Slightly Helpful	10.3%	8.5%	6.7%	7.8%	5.6%	8.3%
Not Helpful	3.9%	0.8%	2.2%	0.0%	0.0%	2.0%
Number Responding	204	130	134	51	71	590
<b>L. Developing Knowledge of Scientific and Technological Developments</b>						
Extremely Helpful	23.2%	13.1%	22.4%	51.0%	24.7%	23.4%
Very Helpful	33.0%	34.6%	44.0%	33.3%	45.2%	37.4%
Moderately Helpful	28.1%	43.8%	17.9%	13.7%	26.0%	27.7%
Slightly Helpful	10.3%	6.2%	12.7%	2.0%	2.7%	8.3%
Not Helpful	5.4%	2.3%	3.0%	0.0%	1.4%	3.2%
Number Responding	203	130	134	51	73	591



**Southern Illinois University Edwardsville**  
**Survey of 2010 Baccalaureate Graduates -- One Year Out**  
**Survey Responses -- Part VI**  
*Educational Effectiveness Questions*

<b>School Detail, cont.</b>	<b>CAS</b>	<b>Bus</b>	<b>Educ</b>	<b>Engr</b>	<b>Nursing</b>	<b>Total</b>
<b>27. Undergraduate Education Broadened Interest Beyond Subjects in Major</b>						
Strongly Agree	24.6%	20.6%	16.5%	21.6%	13.7%	20.3%
Agree	48.8%	49.6%	52.6%	31.4%	53.4%	48.9%
Neutral	21.7%	26.0%	20.3%	37.3%	28.8%	24.5%
Disagree	3.9%	2.3%	7.5%	5.9%	4.1%	4.6%
Strongly Disagree	1.0%	1.5%	3.0%	3.9%	0.0%	1.7%
Number Responding	203	131	133	51	73	591
<b>28. Importance of College Education to:</b>						
<b>A. Personal Life</b>						
Very Important	65.0%	50.4%	71.6%	51.0%	69.9%	62.7%
Moderately Important	23.8%	31.3%	16.4%	31.4%	20.5%	24.0%
Slightly Important	4.9%	13.7%	9.7%	17.6%	5.5%	9.1%
Not Important	6.3%	4.6%	2.2%	0.0%	4.1%	4.2%
Number Responding	206	131	134	51	73	595
<b>B. Community Life</b>						
Very Important	35.0%	19.1%	41.8%	27.5%	50.7%	34.3%
Moderately Important	36.4%	48.1%	38.8%	37.3%	31.5%	39.0%
Slightly Important	18.0%	19.1%	14.2%	29.4%	13.7%	17.8%
Not Important	10.7%	13.7%	5.2%	5.9%	4.1%	8.9%
Number Responding	206	131	134	51	73	595
<b>C. Professional Life</b>						
Very Important	65.9%	62.3%	75.8%	80.4%	84.9%	70.9%
Moderately Important	18.0%	20.0%	18.2%	7.8%	12.3%	16.9%
Slightly Important	9.3%	12.3%	2.3%	11.8%	2.7%	7.8%
Not Important	6.8%	5.4%	3.8%	0.0%	0.0%	4.4%
Number Responding	205	130	132	51	73	591
<b>29. Quality of SIUE Education Relative to That of Friends at Other Schools</b>						
Among the Best	16.8%	18.0%	26.9%	29.4%	26.0%	21.6%
Above Average	40.1%	47.7%	44.8%	47.1%	47.9%	44.4%
Average	37.1%	30.5%	26.1%	21.6%	24.7%	30.3%
Below Average	5.4%	3.9%	2.2%	2.0%	1.4%	3.6%
Among the Worst	0.5%	0.0%	0.0%	0.0%	0.0%	0.2%
Number Responding	202	128	134	51	73	588
<b>30. Involvement Since Bachelor's Degree with:</b>						
<b>A. Organized, Formal, Career Related Learning (non-degree)</b>						
Currently Involved	24.9%	30.8%	34.3%	35.3%	38.4%	30.9%
Have Been Involved	28.8%	30.0%	36.6%	39.2%	42.5%	33.4%
Never Involved	46.3%	39.2%	29.1%	25.5%	19.2%	35.8%
Number Responding	205	130	134	51	73	593
<b>B. Personal Enrichment Studies</b>						
Currently Involved	25.9%	20.0%	23.1%	15.7%	30.1%	23.6%
Have Been Involved	35.1%	26.2%	37.3%	33.3%	34.2%	33.4%
Never Involved	39.0%	53.8%	39.6%	51.0%	35.6%	43.0%
Number Responding	205	130	134	51	73	593

**Southern Illinois University Edwardsville**  
**Survey of 2010 Baccalaureate Graduates -- One Year Out**  
**Survey Responses -- Part VI**  
*Educational Effectiveness Questions*

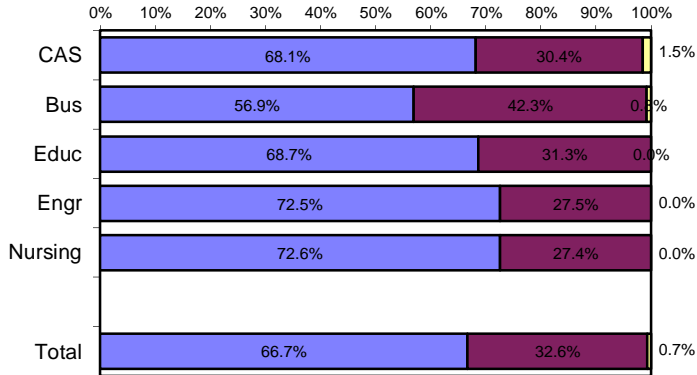
<b>School Detail, cont.</b>	<b>CAS</b>	<b>Bus</b>	<b>Educ</b>	<b>Engr</b>	<b>Nursing</b>	<b>Total</b>
<b>C. Professional Activities or Organizations</b>						
Currently Involved	33.5%	30.8%	38.1%	41.2%	45.2%	36.0%
Have Been Involved	27.7%	36.9%	37.3%	31.4%	37.0%	33.3%
Never Involved	38.8%	32.3%	24.6%	27.5%	17.8%	30.6%
Number Responding	206	130	134	51	73	594
<b>D. Volunteer Work / Community Svc Activities or Organizations</b>						
Currently Involved	33.0%	24.4%	32.3%	23.5%	30.1%	29.8%
Have Been Involved	36.4%	33.6%	44.4%	41.2%	52.1%	39.9%
Never Involved	30.6%	42.0%	23.3%	35.3%	17.8%	30.3%
Number Responding	206	131	133	51	73	594
<b>E. Social / Recreational Activities or Organizations</b>						
Currently Involved	38.3%	38.9%	40.3%	54.9%	45.2%	41.2%
Have Been Involved	35.0%	36.6%	42.5%	21.6%	35.6%	36.0%
Never Involved	26.7%	24.4%	17.2%	23.5%	19.2%	22.9%
Number Responding	206	131	134	51	73	595
<b>F. Political Activities or Organizations</b>						
Currently Involved	8.3%	3.1%	3.7%	5.9%	11.1%	6.3%
Have Been Involved	18.0%	14.6%	21.6%	15.7%	22.2%	18.4%
Never Involved	73.7%	82.3%	74.6%	78.4%	66.7%	75.3%
Number Responding	205	130	134	51	72	592
<b>G. Religious / Ethical Activities or Organizations</b>						
Currently Involved	25.7%	26.7%	29.1%	25.5%	27.8%	26.9%
Have Been Involved	17.5%	25.2%	21.6%	21.6%	33.3%	22.4%
Never Involved	56.8%	48.1%	49.3%	52.9%	38.9%	50.7%
Number Responding	206	131	134	51	72	594
<b>H. Support or Participation in the Arts (music, drama, dance, art)</b>						
Currently Involved	24.9%	10.0%	13.4%	13.7%	16.4%	17.0%
Have Been Involved	27.8%	30.0%	37.3%	23.5%	28.8%	30.2%
Never Involved	47.3%	60.0%	49.3%	62.7%	54.8%	52.8%
Number Responding	205	130	134	51	73	593
<b>I. Reading books not directly related to your job</b>						
Currently Involved	66.0%	51.1%	65.7%	33.3%	65.8%	59.8%
Have Been Involved	23.3%	28.2%	26.1%	33.3%	26.0%	26.2%
Never Involved	10.7%	20.6%	8.2%	33.3%	8.2%	13.9%
Number Responding	206	131	134	51	73	595

'06/05/2012

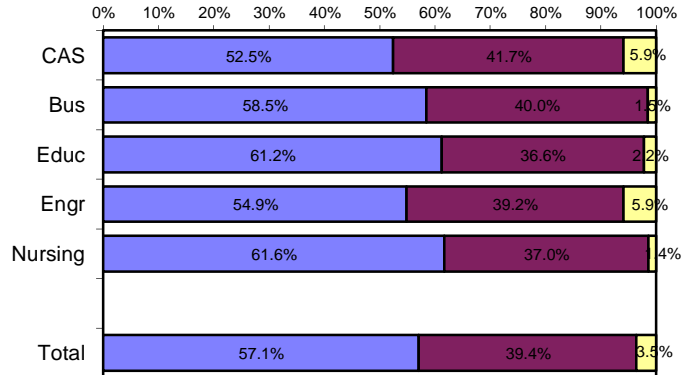
# Helpfulness of University Experiences in:

■ Very to Extremely Helpful    
 ■ Slightly to Moderately Helpful    
 ■ Not Helpful

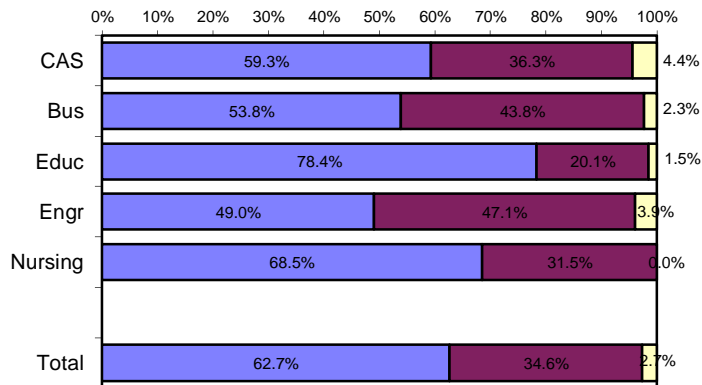
## Developing Critical Thinking Ability



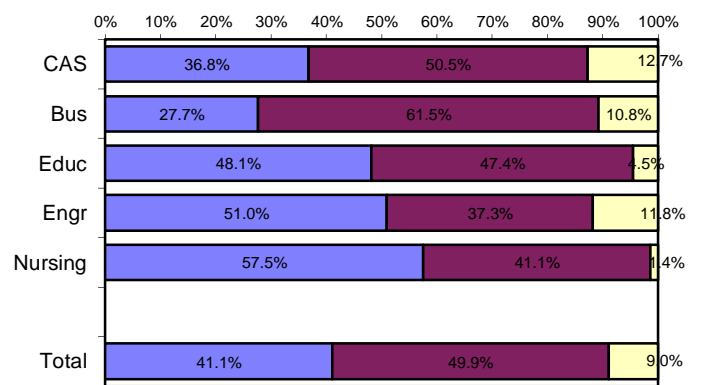
## Developing Sense of Ethics



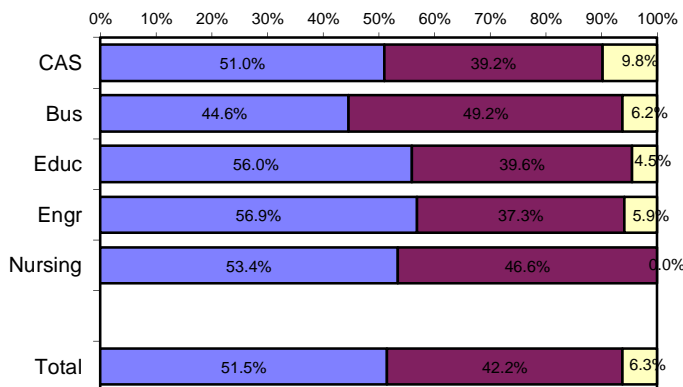
## Understanding People with Different Backgrounds



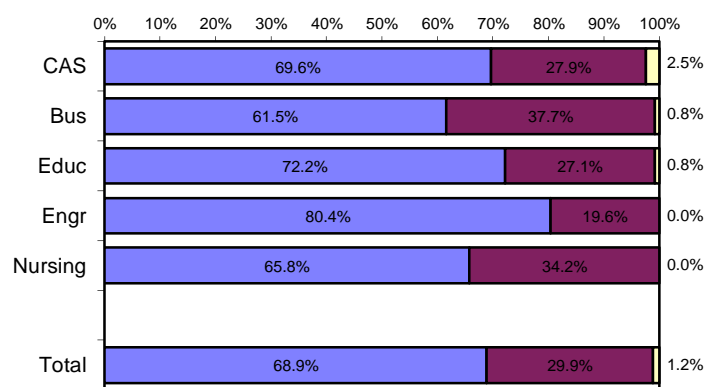
## Becoming a More Active Citizen



## Improving Quality of Life (aside from financial benefits)



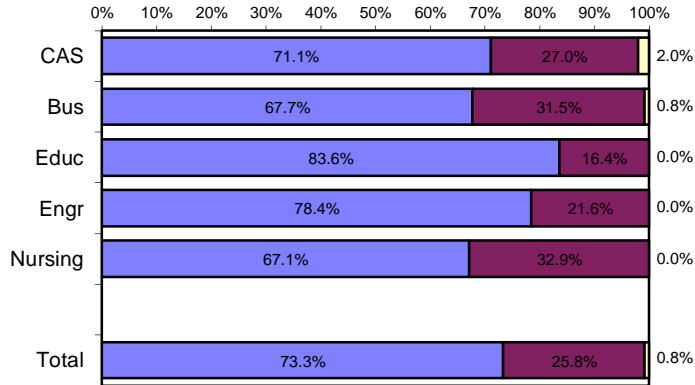
## Developing Reasoning Skills



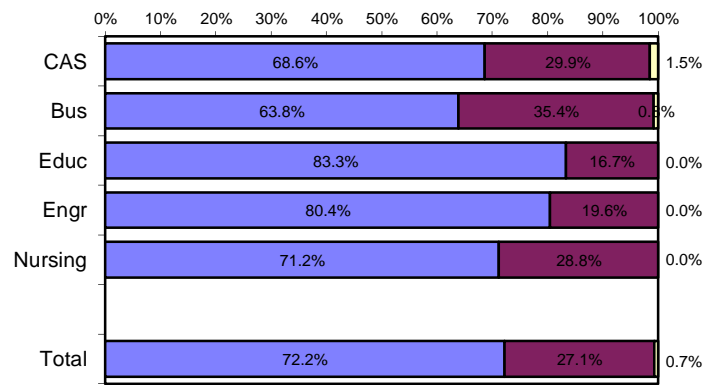
# Helpfulness of University Experiences in:

■ Very to Extremely Helpful    
 ■ Slightly to Moderately Helpful    
 ■ Not Helpful

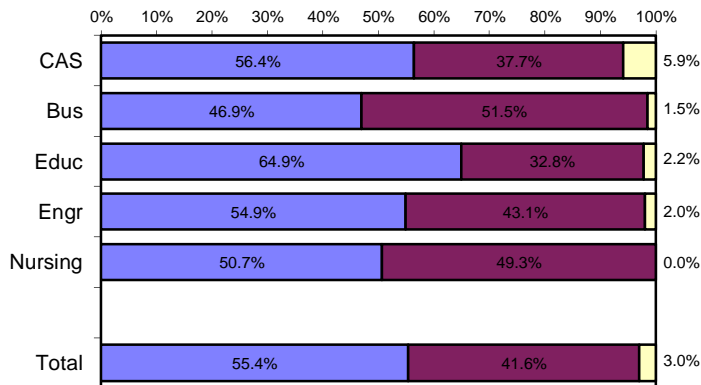
### Viewing Problems from Different Perspectives



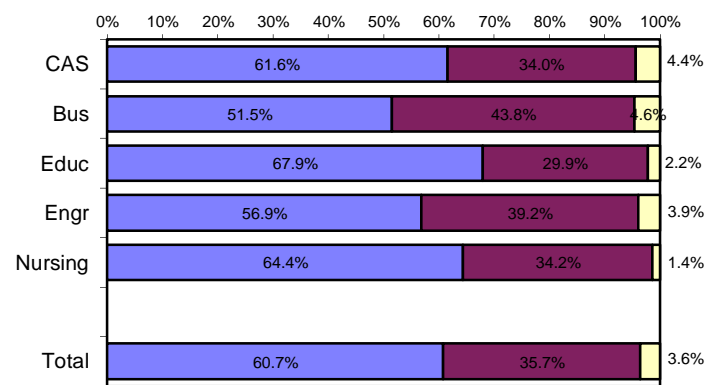
### Developing Ability to Solve Problems



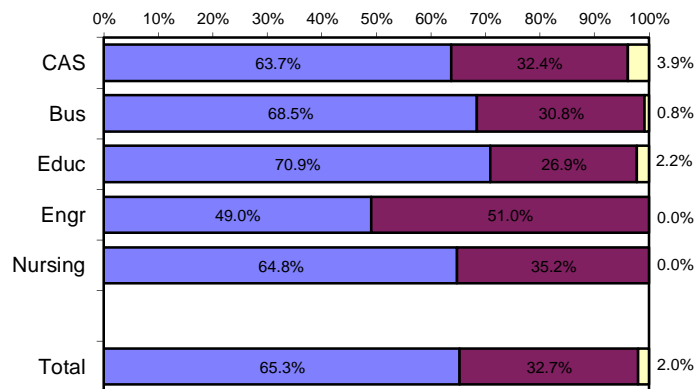
### Making Informed Decisions as a Citizen



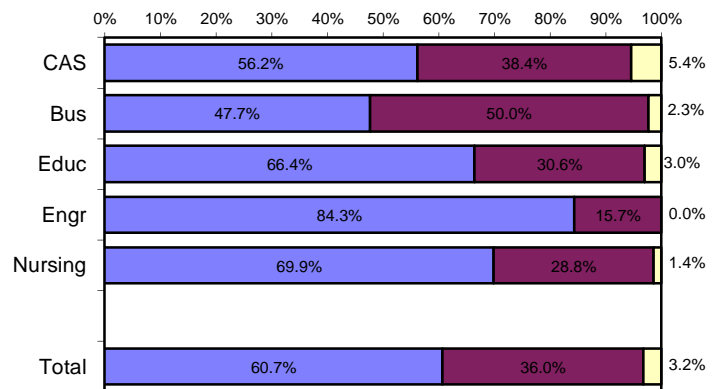
### Developing Writing Skills



### Developing Oral Communication Skills



### Developing Knowledge of Scientific and Technological Developments



## **Appendix A**

Sample Questionnaire

# SOUTHERN ILLINOIS UNIVERSITY EDWARDSVILLE

## SURVEY OF 2010 BACCALAUREATE GRADUATES ONE YEAR AFTER GRADUATION

*Most of the questions in this survey can be answered simply by circling the appropriate number. We hope you will give us your help and valuable input so that we can design programs that better serve the needs of SIUE students. PLEASE ANSWER THESE QUESTIONS ONLY IN REGARD TO THE SIUE UNDERGRADUATE DEGREE YOU RECEIVED LAST YEAR. Your individual responses to this questionnaire will be kept completely confidential. Thank you for your cooperation. Please return this survey in the envelope provided.*

### I. Employment

1. Are you currently employed (including self-employed)?

- 1 Yes, full-time      3 No, but am seeking employment  
2 Yes, part-time      4 No, and am not seeking employment

If you are NOT employed (responses 3 and 4), skip to *Section II*.

2. What is the Zip Code of your place of employment (e.g., your actual workplace, not corporate headquarters)? \_\_\_\_\_

3. How would you classify your primary employer?

- |  |  |
|--|--|
| 1 Self-employed or private practice                    | 6 Health agency (e.g., hospital, clinic) |
| 2 Business (industrial, commercial or service)         | 7 Federal, state, or local government    |
| 3 Professional firm (e.g., engineering, law)           | 8 Armed services                         |
| 4 College or university                                | 9 Non-profit (non-government)            |
| 5 Elementary/secondary school (including cooperatives) | 10 Other (please specify) _____          |

4. How satisfied are you with your current job?

- 1 Very Satisfied    2 Satisfied    3 Somewhat Satisfied    4 Somewhat Dissatisfied    5 Dissatisfied    6 Very Dissatisfied

5. How closely related is your current job to your bachelor's degree major?

- 1 Closely Related    2 Related    3 Unrelated

If you marked "3" (unrelated), is this by choice?

- 1 Yes      2 No

6. When did you secure your first job following receipt of your bachelor's degree?

- 1 Held the same job while enrolled  
2 Secured job by time of graduation  
3 Secured job after graduation

If you marked "3," how many months after graduation did you secure employment?

- 1 Less than 1 month      3 Between 3 and 6 months      5 More than 9 months  
2 Between 1 and 3 months      4 Between 6 and 9 months

7. What is your annual earned income before taxes in your current job? \_\_\_\_\_

8. In general, how well did your bachelor's degree prepare you for your present job?

- 1 Very Well    2 Well    3 Adequately    4 Inadequately    5 Poorly    6 Very poorly

9. Please circle on the lists below both your **primary occupation**<sup>1</sup> (what you do) and the **industry** in which you are employed (where you do it). Although some occupations typically work within one industry, they may be employed in other industries also. An example would be a school nurse — Health: Registered Nurses (11) in Educational Services (15). Examples of the types of occupations contained in each category are provided in italics.

Please write in your actual job title

\_\_\_\_\_ (optional)

**Circle One**

**Occupational Categories**

<ol style="list-style-type: none"> <li>1. <b>Management</b> (such as top executives; marketing, P.R., finance, human resources, administrative services, purchasing, &amp; sales managers; educational administrators; health administrators)</li> <li>2. <b>Business Operations</b> (such as buyers &amp; purchasing agents; insurance claims adjusters/examiners; human resources, training, &amp; labor relations specialists; management analysts)</li> <li>3. <b>Financial Specialists</b> (such as accountants, assessors, appraisers, financial &amp; credit analysts/advisors, loan counselors/officers)</li> <li>4. <b>Computer Specialists</b> (such as computer &amp; information scientists, programmers, software specialists, database &amp; network administrators and analysts)</li> <li>5. <b>Mathematical Scientists and Technicians</b> (such as mathematicians, statisticians, actuaries &amp; mathematical technicians)</li> <li>6. <b>Architects, Surveyors, and Cartographers</b></li> <li>7. <b>Engineers and Related Technicians</b> (such as agricultural, civil, computer hardware, electrical, industrial, mechanical, materials &amp; construction engineers &amp; technicians)</li> <li>8. <b>Life and Physical Scientists and Technicians</b> (such as agricultural &amp; food scientists, biologists, medical scientists, chemists, physicists, atmospheric &amp; environmental scientists, and related technicians)</li> <li>9. <b>Social Scientists</b> (such as economists, psychologists, market &amp; survey researchers, geographers, historians, sociologists, anthropologists, political scientists &amp; urban planners)</li> <li>10. <b>Health: Doctors</b> (such as physicians &amp; surgeons, dentists, veterinarians, optometrists, podiatrists, and chiropractors)</li> <li>11. <b>Health: Registered Nurses</b></li> <li>12. <b>Health: Therapists</b> (such as occupational, physical, recreational, and speech therapists)</li> <li>13. <b>Health: Other Health Practitioners, Professionals, and Support Workers</b> (such as pharmacists, dieticians, physician assistants, and all other technicians/assistants/aides)</li> <li>14. <b>Community and Social Service</b> (such as counselors, social workers, community &amp; religious workers, probation officers)</li> <li>15. <b>Legal: Attorneys/Judges</b></li> <li>16. <b>Legal: Legal Support Workers</b></li> <li>17. <b>Education : Early Childhood Teachers</b> (such as day care, pre-school, and kindergarten teachers)</li> <li>18. <b>Education: Elementary School Teachers</b></li> <li>19. <b>Education: Middle School Teachers</b></li> <li>20. <b>Education: Secondary School Teachers</b></li> <li>21. <b>Education: Special Education Teachers</b></li> </ol>	<ol style="list-style-type: none"> <li>22. <b>Education: Other, <u>except</u> Administrators (see #1 above)</b> such as postsecondary teachers; vocational teachers; teaching &amp; research assistants; other teachers, trainers, &amp; assistants)</li> <li>23. <b>Library Occupations</b> (such as librarians, archivists, curators, and library technicians)</li> <li>24. <b>Arts and Design Workers</b> (such as designers and fine &amp; craft artists)</li> <li>25. <b>Entertainers, Performers, Sports and Related Workers</b> (such as musicians, singers, dancers, actors, producers, directors, composers, athletes, coaches and referees)</li> <li>26. <b>Media and Communication Workers</b> (such as writers &amp; editors, announcers, news analysts &amp; reporters, public relations specialists, and media &amp; communications equipment workers)</li> <li>27. <b>Sales</b> (such as real estate, retail, insurance &amp; securities sales agents, wholesale &amp; manufacturing sales representatives, telemarketers)</li> <li>28. <b>Office and Administration</b> (such as clerical &amp; support personnel, clerks, tellers, distribution workers)</li> <li>29. <b>Protective Services</b> (such as firefighters, correctional officers, police, life guards, security guards, investigators)</li> <li>30. <b>Food Preparation and Serving</b> (such as cooks, bartenders, food service workers &amp; servers)</li> <li>31. <b>Building and Grounds Cleaning and Maintenance</b> (such as janitors, cleaners, landscaping &amp; groundskeeping laborers)</li> <li>32. <b>Personal Care and Services</b> (such as flight attendants, child care workers, hairstylists &amp; personal care workers, recreation workers, hotel &amp; travel industry workers)</li> <li>33. <b>Farming, Fishing, and Forestry</b> (such as farmworkers, animal care workers, foresters, loggers)</li> <li>34. <b>Construction and Extractive</b> (such as carpenters; electricians; painters, construction, oil &amp; mining workers; plumbers)</li> <li>35. <b>Installation, Maintenance, and Repair</b> (such as telecommunications workers; auto repairers; heating, air conditioning, and refrigeration mechanics and installers)</li> <li>36. <b>Production</b> (such as electrical &amp; electronic equipment assemblers; food, metal, plastic, printing, &amp; photography industry technicians &amp; workers)</li> <li>37. <b>Transportation and Material Moving</b> (such as pilots, drivers, air traffic controllers)</li> <li>38. <b>Military</b> (such as officers &amp; enlisted personnel)</li> </ol>
---	--

**Circle One**

**Industrial Categories**

01 Agriculture, Forestry, and Fishing	09 Information	15 Management & Remediation Svcs
02 Mining	10 Finance and Insurance	16 Educational Services
03 Utilities	11 Real Estate and Rental and Leasing	17 Health Care and Social Assistance
04 Construction	12 Professional, Scientific and Technical Services	18 Arts, Entertainment and Recreation
05 Manufacturing	13 Management of Companies and Enterprises	19 Accommodations and Food Services
06 Wholesale Trade	14 Administrative and Support, Waste	20 Other Services (except Public Administration)
07 Retail Trade		
08 Transportation		

<sup>1</sup>For some occupations, such as doctors, the occupation is not appropriate for students one year after earning a baccalaureate degree. This complete listing is also used for surveys of alumni five-years and nine-years after graduation.

## II. Education

10. Have you enrolled in a college or university since earning your bachelor's degree?

- 1 Yes, full-time    2 Yes, part-time    3 No

If you have NOT enrolled in a college or university (response "3"), skip to *Section III*.

11. Are you pursuing (or have you completed) an additional degree since earning your bachelor's?

- 1 Yes    2 No (If your answer is "no," skip to *Section III*.)

If you are pursuing (or have completed) another degree, please indicate which degree below:

- |   |   |
|---|---|
| 01 Associate's  | 06 Health Professional (dentistry, pharmacy, podiatry, optometry, etc.) |
| 02 Second Bachelor's  | 07 Theology/Divinity  |
| 03 Academic Master's (MA, MS, MEd, etc.)                                    | 08 Law (LLB, JD)  |
| 04 Professional Master's (MBA, MSW, MFA, MPA, etc.) or Education Specialist | 09 Doctorate (PhD, EdD, DA, DBA, etc.)                                  |
| 05 Medicine (MD, DO)  | 10 Other, please specify: _____   |

12. In general, how well did your bachelor's degree prepare you for your additional degree program?

- 1 Very well    2 Well    3 Adequately    4 Inadequately    5 Poorly    6 Very poorly

## III. Satisfaction

13. What is your present attitude towards the University?

- 1 Strongly Positive    2 Positive    3 Somewhat Positive    4 Somewhat Negative    5 Negative    6 Strongly Negative

14. What is your present attitude towards your bachelor's degree major?

- 1 Strongly Positive    2 Positive    3 Somewhat Positive    4 Somewhat Negative    5 Negative    6 Strongly Negative

**IV. Educational Practices:** *The questions below will provide feedback to help the University improve undergraduate education. Please respond to each question by evaluating your program as a whole.*

In my major degree program, --	Very Often	Often	Sometimes	Infrequently	Never
15. professors were accessible outside of class.	1	2	3	4	5
16. I was expected or required to work cooperatively with other students on projects, homework, and assignments.	1	2	3	4	5
17. professors encouraged me to challenge my own ideas, the ideas of other students, and those presented in readings and other course materials.	1	2	3	4	5
18. professors used appropriate teaching activities to help me learn.	1	2	3	4	5
19. professors' expectations for the quality of student work was high.	1	2	3	4	5
20. professors provided me with timely feedback on my performance.	1	2	3	4	5
21. professors encouraged students' questions and discussion in class.	1	2	3	4	5
22. I spent the necessary time and energy to come to class prepared.	1	2	3	4	5

## V. Program Quality

23. How would you rate the quality of your major degree program concerning the:

	Excellent	Good	Fair	Poor
A. Number of courses offered in your major for you to complete your program in a reasonable amount of time.	1	2	3	4
B. Classes being offered at convenient times.	1	2	3	4
C. Classes being offered in a logical sequence.	1	2	3	4

24. How would you rate the quality of the faculty in your major degree program:

- 1    2    3    4

25. Were the academic standards in grading students by faculty in your degree program:

- 1 Too High    2 About Right    3 Too Low



## VI. Educational Effectiveness

26. Listed below are some abilities often mentioned as important for personal and professional success in the 21<sup>st</sup> century. In your view, how effective were your University experiences in —

	Extremely Helpful	Very Helpful	Moderately Helpful	Slightly Helpful	Not Helpful
A. helping you to better develop your critical thinking ability?	1	2	3	4	5
B. helping you to better develop your sense of ethics?	1	2	3	4	5
C. contributing to a greater understanding of people with different backgrounds, habits, values, appearances, and abilities?	1	2	3	4	5
D. helping you to become a more active citizen?	1	2	3	4	5
E. improving the quality of your life aside from financial benefits?	1	2	3	4	5
F. helping you to better develop your reasoning skills?	1	2	3	4	5
G. helping you to better develop your capacity to view problems from different perspectives?	1	2	3	4	5
H. helping you to better develop your ability to solve problems?	1	2	3	4	5
I. helping you to better develop your ability to make informed decisions as a citizen?	1	2	3	4	5
J. helping you to better develop your writing skills?	1	2	3	4	5
K. helping you to better develop your oral communication skills?	1	2	3	4	5
L. helping you to better develop your knowledge of scientific and technological developments?	1	2	3	4	5

27. My SIUE undergraduate education broadened my interest in issues beyond the subjects in my major.

1 Strongly Agree      2 Agree      3 Neutral      4 Disagree      5 Strongly Disagree

28. How important has your college education been to your —

	Very Important	Moderately Important	Slightly Important	Not Important
A. Personal Life	1	2	3	4
B. Community Life	1	2	3	4
C. Professional Life	1	2	3	4

29. How would you rate the quality of education that you received from SIUE relative to the education that your friends and colleagues have received from other colleges or universities?

1 Among the Best      2 Above Average      3 Average      4 Below Average      5 Among the worst

30. Please indicate your involvement with each of the following since completing your bachelor's degree:

	Currently Involved	Have Been Involved	Never Involved
A. Organized, formal learning that is career-related (non-degree)	1	2	3
B. Personal enrichment studies	1	2	3
C. Professional activities or organizations	1	2	3
D. Volunteer work / community service activities or organizations	1	2	3
E. Social/recreational activities or organizations	1	2	3
F. Political activities or organizations	1	2	3
G. Religious/ethical activities or organizations	1	2	3
H. Support or participation in the Arts ( <i>music, drama, dance, art</i> )	1	2	3
I. Reading books not directly related to your job	1	2	3