

Southern Illinois University at Edwardsville
Survey of 2008 Baccalaureate Graduates -- One Year Out

Survey Results for Schools

May 2010

Survey Administered By
The Office of Undergraduate Assessment and Program Review

Survey Results Compiled By
The Office of Institutional Research and Studies

Southern Illinois University at Edwardsville Survey of 2008 Baccalaureate Graduates -- One Year Out

Contents

Introduction

Methodology

Survey Population and Respondents

- Charts: *2008 Baccalaureate Recipients, Profile*
- \$ *Gender*
 - \$ *Race/Ethnic*
 - \$ *Age at Graduation*
 - \$ *Matriculation Status*
 - \$ *Time to Degree for New Freshmen*
 - \$ *Time to Degree for New Transfers*

- Table: *Comparison of All Graduates to Survey Respondents*

Survey Results

- Charts: *2008 Baccalaureate Graduates One Year Out, Satisfaction*
- \$ *Present Attitude Toward the University*
 - \$ *Present Attitude Towards Alumni=s Bachelor=s Degree Major*
 - \$ *Quality of SIUE Education Relative to That of Friends at Other Schools*

- 2008 Baccalaureate Graduates One Year Out, Additional Education*
- \$ *Enrolled Since Bachelors Degree*
 - \$ *How Well Bachelor=s Degree Prepared Alumni for Additional Degree*

- 2008 Baccalaureate Graduates One Year Out, Employment*
- \$ *Employment Status*
 - \$ *Place of Employment*
 - \$ *Job in Field Related to Major?*
 - \$ *Job Satisfaction*
 - \$ *How Well Bachelor=s Degree Program Prepared Alumni for Present Job*
 - \$ *Mean Salary of Alumni Employed Full Time*

- Helpfulness of University Experiences in:*
- \$ *Developing Critical Thinking Ability*
 - \$ *Developing Sense of Ethics*
 - \$ *Understanding People with Different Backgrounds*
 - \$ *Becoming a more Active Citizen*
 - \$ *Improving Quality of Life (aside from financial benefits)*
 - \$ *Developing Reasoning Skills*
 - \$ *Viewing Problems from Different Perspectives*
 - \$ *Developing Ability to Solve Problems*
 - \$ *Making Informed Decisions as a Citizen*

- \$ *Developing Writing Skills*
- \$ *Developing Oral Communication Skills*
- \$ *Developing Knowledge of Scientific and Technological Developments*

Tables:

<i>Part I</i>	<i>Employment Questions</i>
<i>Part II</i>	<i>Education Questions</i>
<i>Part III</i>	<i>Satisfaction Questions</i>
<i>Part IV</i>	<i>Educational Practices Questions</i>
<i>Part V</i>	<i>Program Quality Questions</i>
<i>Part VI</i>	<i>Educational Effectiveness Questions</i>

Questionnaire

Southern Illinois University Edwardsville Survey of 2008 Baccalaureate Graduates -- One Year Out

Introduction

This one-year out baccalaureate survey was done to provide data for the University's undergraduate program reviews and other planning uses, and to participate in the Illinois Board of Higher Education Baccalaureate Graduates= Follow-up System.

IBHE Survey Schedule and Population Definition		
Survey Year	Survey Type	Survey Group
1992	One-Year Out Survey	Class of >91
1993	Five-Year Out Survey	Class of >88
1994	Ten-Year Out Survey	Class of >84
1995	One-Year Out Survey	Class of >94
1996	Five-Year Out Survey	Class of >91
1997	Nine-Year Out Survey	Class of >88
1998	One-Year Out Survey	Class of >97
1999	Five-Year Out Survey	Class of >94
2000	Nine-Year Out Survey	Class of >91
2001	One-Year Out Survey	Class of >00
2002	Five-Year Out Survey	Class of >97
2003	Nine-Year Out Survey	Class of >94
2004	One-Year Out Survey	Class of '03
2005	Five-Year Out Survey	Class of '00
2006	Nine-Year Out Survey	Class of '97
2007	One-Year Out Survey	Class of '06
2008	Five-Year Out Survey	Class of '03
2009	Nine-Year Out Survey	Class of '00

After the first six years, the surveys were reviewed and changed, modifying some questions and value scales, and adding some additional questions.

The current survey was administered during the spring and summer of 2009 to calendar year 2008 baccalaureate graduates of SIUE. The questionnaire includes 18 questions common to all Illinois public universities. These are the first 18 questions in the survey, forming Parts I, II, III, and the beginning of Part IV (Employment Questions, Education Questions, Satisfaction Questions, and Educational Practices Questions). SIUE added to these one question on industry of employment and three additional questions on educational practices, and appended two additional parts to the survey to add questions about program quality, and educational effectiveness. (A questionnaire is included in Appendix A.)

Methodology

The survey questionnaire and a cover letter were adapted from the questionnaire and letter developed

for previous surveys. SIUE Alumni Services provided current addresses for calendar year 2008 graduates as determined from institutional records. The survey was distributed in May 2009 to May 2008 baccalaureate graduates and in August 2009 to August 2008 and December 2008 baccalaureate graduates. Each envelope included a cover letter, a questionnaire, and a postage-paid, pre-addressed return envelope. Each questionnaire was stamped with a sequential, identifying number which was also stamped on a listing of the graduates (this aided in identifying the surveys when returned).

On April 20, 2009 approximately two weeks before the first set of surveys were to be mailed, a postcard was sent to the 1,163 May 2008 baccalaureate graduates for whom addresses were available, notifying the alumni that they would be receiving a questionnaire and encouraging them to complete and return the survey. Surveys were mailed first class on May 4, 2009. On May 26th, approximately three weeks after the survey was mailed and when the rate of survey returns had decreased, a follow-up postcard requesting that the survey be returned was mailed to each student who had not returned his or her survey. On June 8th a second wave mailing of the surveys was sent to the 882 remaining non-respondents.

The second distribution began with the preliminary postcard mailed on August 10, 2009 to the 856 August and December 2008 baccalaureate graduates with known addresses. Surveys were mailed first class to this group on August 24, 2009 with a follow-up post card mailed to non-responders on September 14, 2009. A second wave mailing of the survey was sent to 746 non-responders on September 28, 2009.

Returned surveys began arriving on May 11th and continued through the summer and fall, with a few arriving as late as March 2010. As the surveys came in, each was matched with the corresponding stamped listing. The students' names were then checked against the alphabetic list of alumni to verify (or, if the alumnus chose not to provide the identification number, to obtain) the student identification number. The student identification number was the key which allowed merging of survey data with administrative records (e.g., biographic, graduation, matriculation, and enrollment information).

Southern Illinois University Edwardsville
Survey of 2008 Baccalaureate Graduates -- One Year Out

Survey Population and Respondents

	Number of Graduates
2008 Baccalaureate Degrees	2,062
Less persons who received 2 baccalaureate degrees	27
2008 Baccalaureate Graduates	2,035
Less Graduates with No Address Available *	18
Graduates Surveyed	2,017
Less Non-Deliverable Surveys	153
Less Non-Responding Graduates	1,229
Survey Respondents	635
Gross Response Rate (Respondents/Total Surveyed)	31.48%
Adjusted Response Rate (Respondents/Delivered Surveys)	34.07%

* Includes deceased alumni, foreign addresses and known bad addresses.

Southern Illinois University Edwardsville
Survey of 2008 Baccalaureate Graduates -- One Year Out

Comparison of All Graduates to Survey Respondents

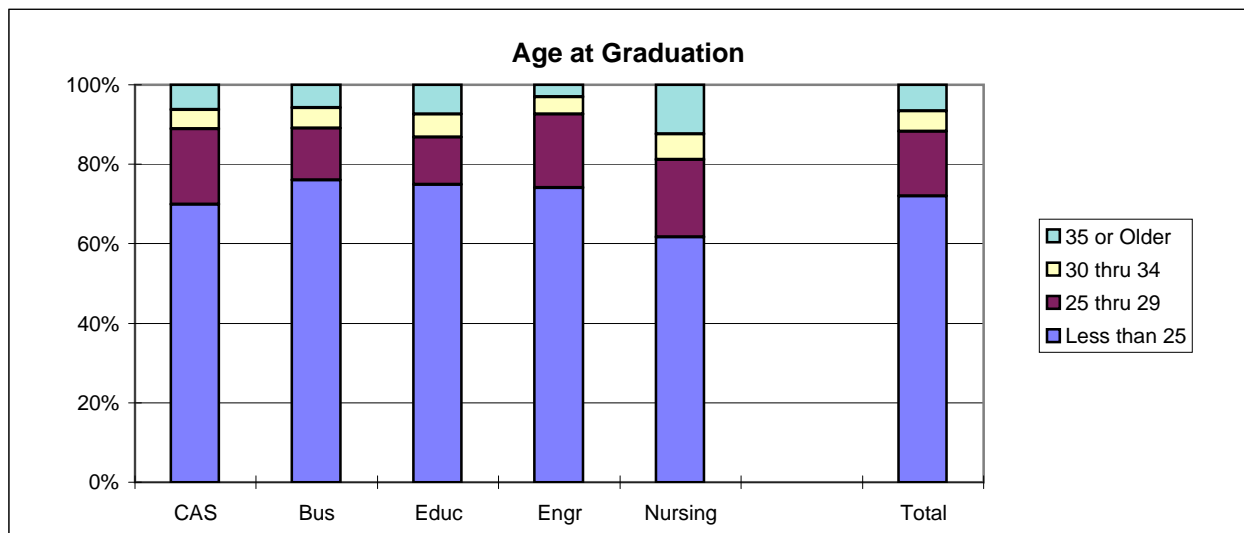
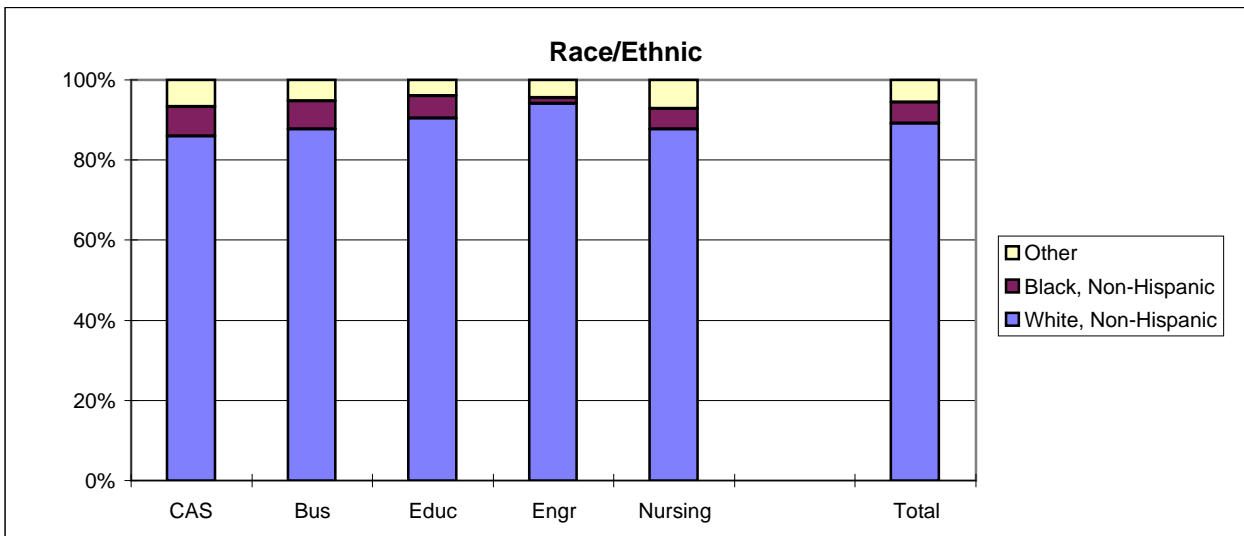
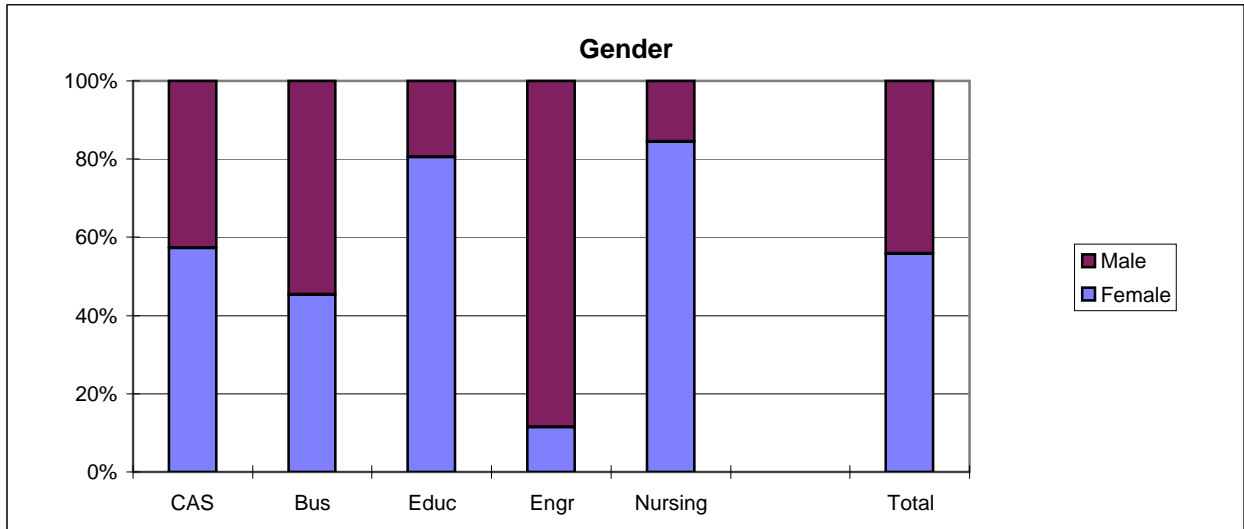
School Detail	All Graduates						
	CAS	Bus	Educ	Engr	Nursing	Total	
Total	849	384	447	201	154	2035	
Female	57.4%	45.3%	80.5%	11.4%	84.4%	57.7%	
Male	42.6%	54.7%	19.5%	88.6%	15.6%	42.3%	
Missing Data	0.0%	0.0%	0.0%	0.0%	0.0%	0.0%	
White, Non-Hispanic	85.9%	87.8%	90.4%	94.0%	87.7%	88.2%	
Black, Non-Hispanic	7.4%	7.0%	5.6%	1.5%	5.2%	6.2%	
Asian/Pacific Islander	2.8%	1.6%	0.9%	1.5%	1.9%	2.0%	
American Indian/Alaskan Native	0.2%	0.3%	0.2%	0.0%	0.0%	0.2%	
Hispanic	2.0%	1.0%	2.2%	0.5%	1.3%	1.7%	
Non-Resident Alien	0.6%	1.0%	0.0%	2.5%	2.6%	0.9%	
Missing Data	1.1%	1.3%	0.7%	0.0%	1.3%	0.9%	
Age at Graduation	range	20 to 61	20 to 56	20 to 57	21 to 47	21 to 56	20 to 58
	median	25.0	24.6	24.7114	24.2289	26.2403	24.9
Bachelor of Science	64.7%	78.6%	92.4%	97.5%	100.0%	79.3%	
Bachelor of Music	0.7%	0.0%	0.0%	0.0%	0.0%	0.3%	
Bachelor of Arts	28.9%	0.0%	7.6%	2.5%	0.0%	14.0%	
Bachelor of Fine Arts	3.2%	0.0%	0.0%	0.0%	0.0%	1.3%	
Bachelor of Sci in Accountancy	0.0%	21.4%	0.0%	0.0%	0.0%	4.0%	
Bachelor of Liberal Studies	2.4%	0.0%	0.0%	0.0%	0.0%	1.0%	
Bachelor of Social Work	0.4%	0.0%	0.0%	0.0%	0.0%	0.2%	
Missing Data	0.0%	0.0%	0.0%	0.0%	0.0%	0.0%	
Graduated Spring 2008	49.9%	44.5%	75.2%	52.2%	87.0%	57.5%	
Graduated Summer 2008	19.9%	19.8%	6.9%	7.5%	2.6%	14.5%	
Graduated Fall 2008	30.2%	35.7%	17.9%	40.3%	10.4%	28.0%	
Missing Data	0.0%	0.0%	0.0%	0.0%	0.0%	0.0%	
Matriculated as a New Freshman	47.5%	54.7%	45.4%	52.7%	44.8%	48.7%	
Matriculated as a Transfer	51.0%	43.8%	54.1%	46.3%	54.5%	50.1%	
Matriculated as a Non-Degree Student	0.6%	1.0%	0.2%	1.0%	0.6%	0.6%	
Missing Data	0.9%	0.5%	0.2%	0.0%	0.0%	0.5%	
Time to Degree for New Freshmen							
3 Years or Fewer	5.0%	9.0%	3.9%	1.9%	1.4%	5.0%	
4 Years	50.6%	59.0%	62.1%	64.2%	73.9%	57.8%	
5 Years	24.8%	17.6%	22.2%	18.9%	17.4%	21.6%	
6 Years	7.4%	4.8%	6.4%	8.5%	0.0%	6.3%	
7 Years	5.5%	3.8%	2.5%	2.8%	0.0%	3.8%	
8 Years	3.0%	1.9%	0.5%	0.9%	2.9%	2.0%	
9 Years	1.2%	0.5%	0.0%	0.9%	1.4%	0.8%	
10 Years	0.7%	0.0%	0.0%	0.0%	0.0%	0.3%	
11 Years or More	1.7%	3.3%	2.5%	1.9%	2.9%	2.3%	
Missing Data	0.0%	0.0%	0.0%	0.0%	0.0%	0.0%	
Time to Degree for Transfers							
2 or Fewer Years	29.1%	44.6%	38.8%	29.0%	42.9%	35.1%	
3 Years	35.8%	26.2%	33.1%	35.5%	31.0%	33.1%	
4 Years	15.2%	12.5%	12.4%	16.1%	14.3%	14.1%	
5 Years	7.6%	4.2%	5.4%	9.7%	3.6%	6.4%	
6 Years	3.9%	4.8%	1.7%	4.3%	2.4%	3.4%	
7 Years	2.5%	1.2%	2.9%	2.2%	1.2%	2.3%	
8 Years	0.9%	1.8%	0.4%	2.2%	0.0%	1.0%	
9 Years	0.7%	0.6%	1.7%	0.0%	2.4%	1.0%	
10 Years or More	4.2%	4.2%	3.7%	1.1%	2.4%	3.6%	
Missing Data	0.0%	0.0%	0.0%	0.0%	0.0%	0.0%	
Graduating GPA (4 point scale)	Mean	3.111	3.070	3.406	3.075	3.386	3.186
	Std Dev	0.468	0.406	0.424	0.450	0.330	0.458

Southern Illinois University Edwardsville
Survey of 2008 Baccalaureate Graduates -- One Year Out

Comparison of All Graduates to Survey Respondents, cont.

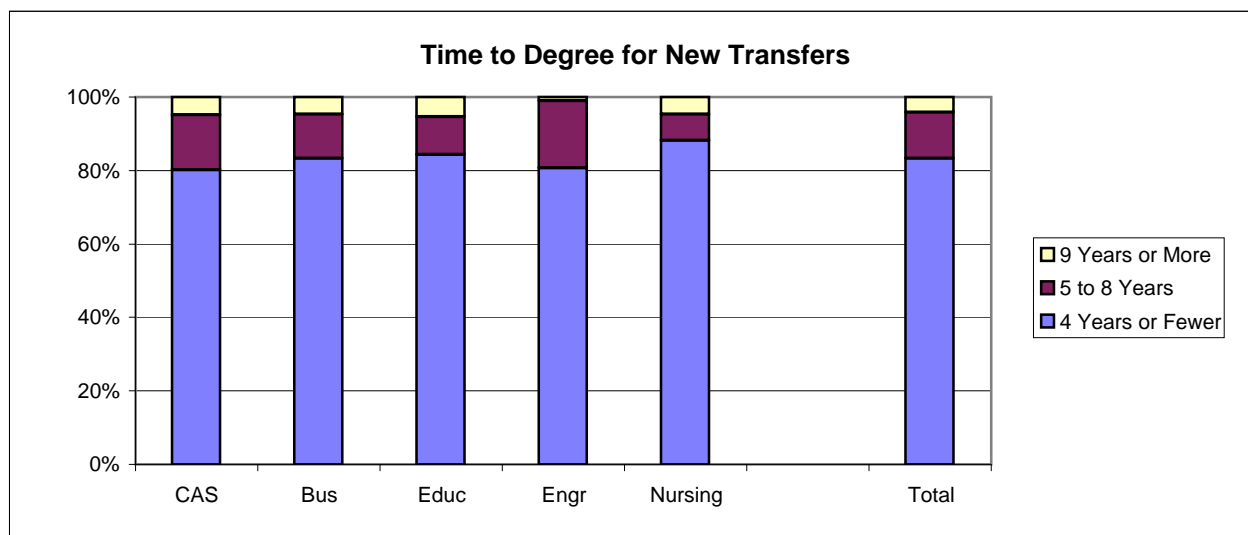
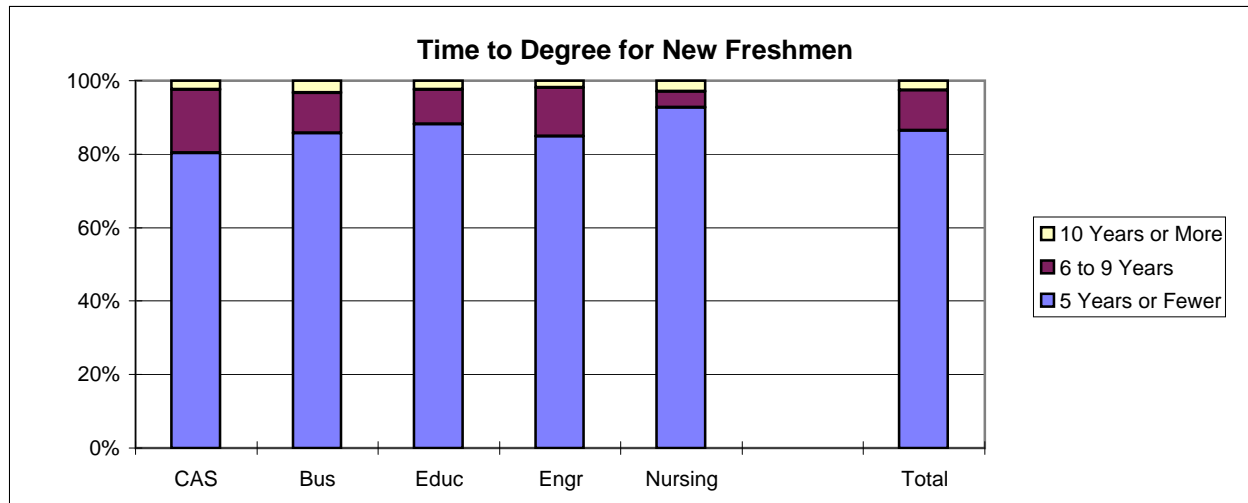
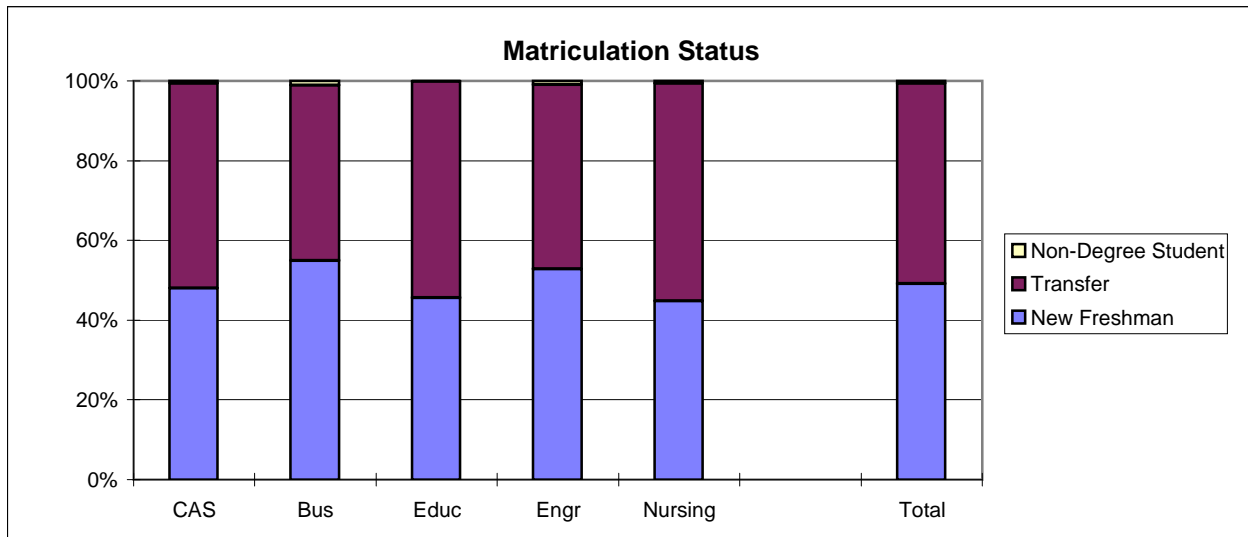
School Detail	All One Year Out Survey Respondents						
	CAS	Bus	Educ	Engr	Nursing	Total	
Total	220	117	149	85	64	635	
Female	66.4%	54.7%	90.6%	14.1%	84.4%	64.7%	
Male	33.6%	45.3%	9.4%	85.9%	15.6%	35.3%	
Missing Data	0.0%	0.0%	0.0%	0.0%	0.0%	0.0%	
White, Non-Hispanic	91.4%	93.2%	92.6%	98.8%	96.9%	93.5%	
Black, Non-Hispanic	2.7%	3.4%	4.0%	0.0%	1.6%	2.7%	
Asian/Pacific Islander	3.2%	1.7%	1.3%	1.2%	0.0%	1.9%	
American Indian/Alaskan Native	0.0%	0.0%	0.0%	0.0%	0.0%	0.0%	
Hispanic	1.4%	0.9%	2.0%	0.0%	0.0%	1.1%	
Non-Resident Alien	0.0%	0.0%	0.0%	0.0%	0.0%	0.0%	
Missing Data	1.4%	0.9%	0.0%	0.0%	1.6%	0.8%	
Age at Graduation	range	20 to 57	20 to 56	20 to 52	21 to 34	21 to 51	20 to 57
	median	25.4591	25.0	25.1678	24.1	27.0625	25.2961
Bachelor of Science	57.7%	77.8%	90.6%	97.6%	84.4%	77.2%	
Bachelor of Music	0.9%	0.0%	0.0%	0.0%	0.0%	0.3%	
Bachelor of Arts	35.9%	0.0%	9.4%	2.4%	0.0%	15.0%	
Bachelor of Fine Arts	2.7%	0.0%	0.0%	0.0%	0.0%	0.9%	
Bachelor of Sci in Accountancy	0.0%	22.2%	0.0%	0.0%	0.0%	4.1%	
Bachelor of Liberal Studies	2.3%	0.0%	0.0%	0.0%	0.0%	0.8%	
Bachelor of Social Work	0.7%	0.0%	0.0%	0.0%	0.0%	0.2%	
Missing Data	0.0%	0.0%	0.0%	0.0%	0.0%	0.0%	
Graduated Spring 2008	51.4%	49.6%	77.2%	51.8%	85.9%	60.6%	
Graduated Summer 2008	24.5%	17.9%	5.4%	5.9%	1.6%	14.0%	
Graduated Fall 2008	24.1%	32.5%	17.4%	42.4%	12.5%	25.4%	
Missing Data	0.0%	0.0%	0.0%	0.0%	0.0%	0.0%	
Matriculated as a New Freshman	49.5%	45.3%	43.0%	57.6%	42.2%	47.6%	
Matriculated as a Transfer	49.1%	53.8%	56.4%	41.2%	56.3%	51.3%	
Matriculated as a Non-Degree Student	0.5%	0.9%	0.7%	1.2%	1.6%	0.8%	
Missing Data	0.9%	0.0%	0.0%	0.0%	0.0%	0.0%	
Time to Degree for New Freshmen							
3 Years or Fewer	7.3%	18.9%	4.7%	4.1%	0.0%	7.6%	
4 Years	52.3%	56.6%	65.6%	63.3%	74.1%	59.6%	
5 Years	20.2%	9.4%	18.8%	14.3%	22.2%	17.2%	
6 Years	8.3%	3.8%	6.3%	8.2%	0.0%	6.3%	
7 Years	4.6%	3.8%	3.1%	4.1%	0.0%	3.6%	
8 Years	0.9%	1.9%	0.0%	2.0%	3.7%	1.3%	
9 Years	2.8%	0.0%	0.0%	0.0%	0.0%	1.0%	
10 Years	0.9%	0.0%	0.0%	0.0%	0.0%	0.3%	
11 Years or More	2.8%	5.7%	1.6%	4.1%	0.0%	3.0%	
Missing Data	0.0%	0.0%	0.0%	0.0%	0.0%	0.0%	
Time to Degree for Transfers							
2 or Fewer Years	32.4%	46.0%	42.9%	28.6%	47.2%	39.0%	
3 Years	36.1%	30.2%	29.8%	34.3%	30.6%	32.5%	
4 Years	13.0%	6.3%	11.9%	20.0%	11.1%	12.0%	
5 Years	7.4%	4.8%	4.8%	11.4%	5.6%	6.4%	
6 Years	5.6%	3.2%	1.2%	2.9%	0.0%	3.1%	
7 Years	0.9%	1.6%	2.4%	0.0%	2.8%	1.5%	
8 Years	0.0%	3.2%	0.0%	2.9%	0.0%	0.9%	
9 Years	0.9%	0.0%	2.4%	0.0%	0.0%	0.9%	
10 Years or More	3.7%	4.8%	4.8%	0.0%	2.8%	3.7%	
Missing Data	0.0%	0.0%	0.0%	0.0%	0.0%	0.0%	
Graduating GPA (4 point scale)	Mean	3.240	3.153	3.501	3.121	3.420	3.288
	Std Dev	0.467	0.423	0.381	0.469	0.313	0.448

2008 Baccalaureate Recipients Profile



2008 Baccalaureate Recipients

Profile, cont.



Southern Illinois University Edwardsville
Survey of 2008 Baccalaureate Graduates -- One Year Out
Survey Responses -- Part I
Employment Questions

School Detail	CAS	Bus	Educ	Engr	Nursing	Total
Number of Survey Respondents *	220	117	149	85	64	635
1. Number Employed:						
Full-time	52.1%	77.6%	57.1%	83.5%	92.2%	66.2%
Part-time	23.7%	12.9%	19.0%	3.5%	6.3%	16.2%
Not, but Seeking	14.6%	7.8%	9.5%	9.4%	1.6%	10.1%
Not, not Seeking	9.6%	1.7%	14.3%	3.5%	0.0%	7.4%
Number Responding	219	116	147	85	64	631
The remaining questions in Part I were to be answered only by respondents who were employed full-time or part-time.						
	166	105	112	74	63	520
2. Place of Employment						
Illinois	59.1%	57.4%	82.7%	42.9%	48.3%	60.2%
Missouri	26.0%	35.6%	12.5%	47.1%	43.1%	30.2%
Other	14.9%	6.9%	4.8%	10.0%	8.6%	9.7%
Number Responding	154	101	104	70	58	487
3. Classification of Primary Employer						
Self-Employed or Private Practice	2.4%	4.8%	4.5%	2.7%	0.0%	3.1%
Business (Industrial, Commercial or Service)	41.6%	60.6%	14.4%	43.2%	0.0%	34.8%
Professional Firm (e.g., Engineering, Law)	4.2%	14.4%	0.9%	37.8%	0.0%	9.9%
College or University	12.0%	4.8%	7.2%	0.0%	1.6%	6.6%
Elementary/Secondary School	9.0%	1.0%	55.9%	0.0%	0.0%	15.1%
Health Agency (e.g. Hospital, Clinic)	5.4%	1.0%	5.4%	0.0%	95.2%	14.5%
Federal, State, or Local Government	9.6%	8.7%	3.6%	13.5%	1.6%	7.7%
Armed Services	0.6%	0.0%	0.9%	0.0%	0.0%	0.4%
NonProfit (Non-Government)	6.6%	1.0%	4.5%	1.4%	1.6%	3.7%
Other	8.4%	3.8%	2.7%	1.4%	0.0%	4.3%
Number Responding	166	104	111	74	62	517
4. Job Satisfaction						
Very Satisfied	21.3%	33.7%	33.9%	48.6%	33.3%	31.9%
Satisfied	34.1%	35.6%	38.4%	35.1%	46.0%	36.9%
Somewhat Satisfied	27.4%	14.4%	21.4%	6.8%	15.9%	19.1%
Somewhat Dissatisfied	9.1%	9.6%	3.6%	6.8%	1.6%	6.8%
Dissatisfied	4.3%	3.8%	2.7%	2.7%	3.2%	3.5%
Very Dissatisfied	3.7%	2.9%	0.0%	0.0%	0.0%	1.7%
Number Responding	164	104	112	74	63	517
5. Job in Field?						
Closely Related	28.2%	47.1%	61.6%	71.2%	87.3%	52.6%
Related	30.1%	34.6%	18.8%	23.3%	12.7%	25.4%
Unrelated (choice unknown)	1.8%	0.0%	0.0%	0.0%	0.0%	0.6%
Unrelated (by choice)	12.9%	8.7%	9.8%	1.4%	0.0%	8.2%
Unrelated (not by choice)	27.0%	9.6%	9.8%	4.1%	0.0%	13.2%
Number Responding	163	104	112	73	63	515
6. Timing of Securing First Job After Degree						
Held the Same Job While Enrolled	25.9%	32.4%	18.0%	25.7%	25.4%	25.4%
Secured Job by Graduation	15.1%	23.8%	21.6%	52.7%	55.6%	28.5%
Secured Job After Graduation(timing unknown)	1.8%	0.0%	0.0%	2.7%	1.6%	1.2%
Less than 1 Month After Graduation	7.2%	5.7%	10.8%	2.7%	6.3%	6.9%
1 to 3 Months After Graduation	15.7%	16.2%	26.1%	6.8%	6.3%	15.6%
3 to 6 Months After Graduation	21.7%	12.4%	17.1%	5.4%	4.8%	14.5%
6 to 9 Months After Graduation	6.6%	6.7%	3.6%	2.7%	0.0%	4.6%
More than 9 Months After Graduation	6.0%	2.9%	2.7%	1.4%	0.0%	3.3%
Number Responding	166	105	111	74	63	519

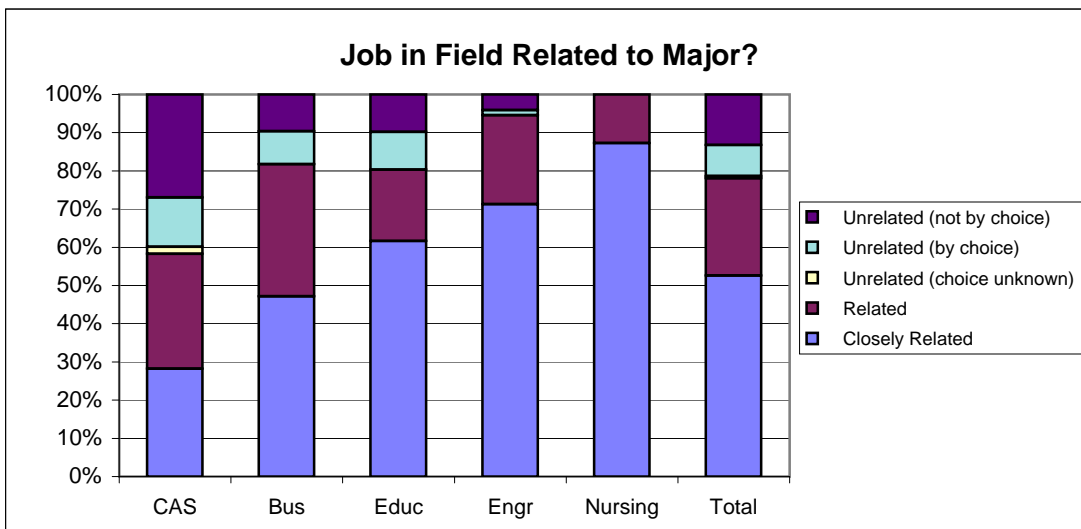
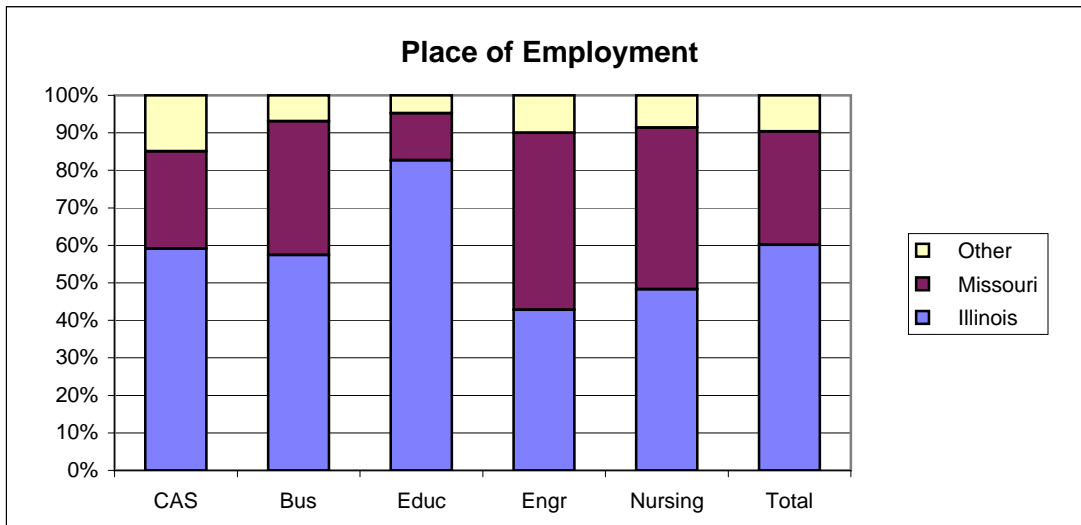
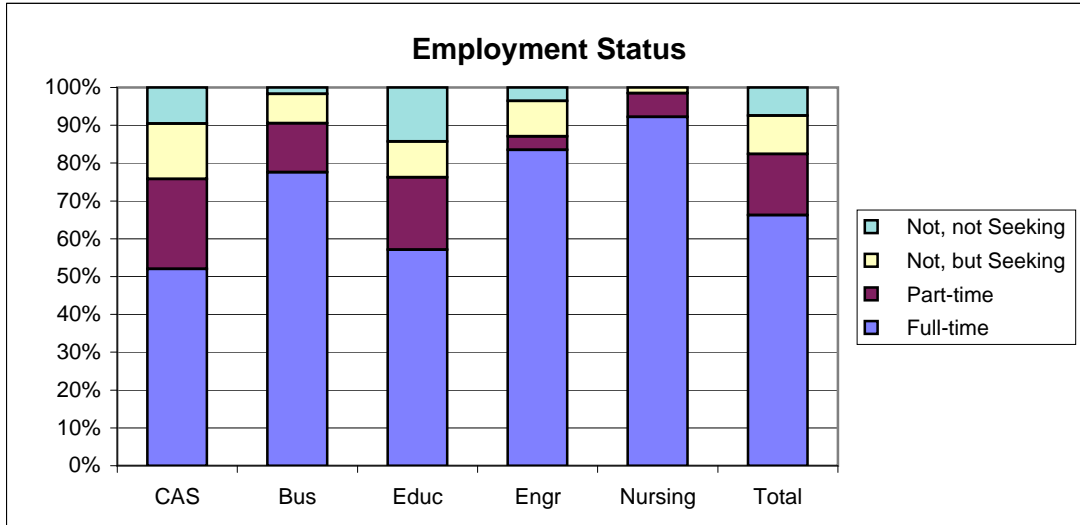
Southern Illinois University Edwardsville
Survey of 2008 Baccalaureate Graduates -- One Year Out
Survey Responses -- Part I
Employment Questions

School Detail, cont.	CAS	Bus	Educ	Engr	Nursing	Total
7. Annual Earned Income in Current Job Before Taxes						
Employed Full-Time						
Less Than \$15,000	2.8%	6.0%	10.0%	0.0%	0.0%	4.1%
\$15,000 to 19,999	6.6%	0.0%	5.0%	0.0%	0.0%	2.8%
\$20,000 to \$24,999	19.8%	4.8%	12.5%	0.0%	0.0%	8.9%
\$25,000 to \$29,999	13.2%	16.7%	20.0%	1.5%	0.0%	11.4%
\$30,000 to \$34,999	23.6%	20.2%	23.8%	0.0%	5.4%	16.2%
\$35,000 to \$39,999	14.2%	13.1%	13.8%	1.5%	7.1%	10.7%
\$40,000 or More	19.8%	39.3%	15.0%	97.1%	87.5%	45.9%
Number Responding	106	84	80	68	56	394
Mean Salary	\$31,706	\$37,250	\$30,283	\$52,559	\$45,072	\$38,098
Employed Part-Time						
Less Than \$5,000	0.0%	0.0%	11.1%	DW	0.0%	2.7%
5,000 to \$9,999	26.3%	15.4%	27.8%	DW	0.0%	24.7%
\$10,000 to \$14,999	31.6%	38.5%	38.9%	DW	0.0%	32.9%
\$15,000 to \$19,999	23.7%	15.4%	11.1%	DW	0.0%	17.8%
\$20,000 or More	18.4%	30.8%	11.1%	DW	100.0%	21.9%
Number Responding	38	13	18	2	2	73
Mean Salary	\$14,054	\$15,808	\$12,043	\$24,000	\$44,000	\$14,963
8. Bachelor's Degree Preparation for Job						
Very Well	13.6%	14.6%	22.7%	23.0%	30.6%	19.2%
Well	24.1%	30.1%	30.0%	39.2%	30.6%	29.5%
Adequately	35.8%	47.6%	35.5%	35.1%	37.1%	38.2%
Inadequately	13.6%	3.9%	7.3%	1.4%	1.6%	7.0%
Poorly	5.6%	0.0%	2.7%	0.0%	0.0%	2.3%
Very Poorly	7.4%	3.9%	1.8%	1.4%	0.0%	3.7%
Number Responding	162	103	110	74	62	511
9a. Primary Occupation						
Management	3.8%	15.2%	1.8%	4.1%	0.0%	5.3%
Business Operations	6.3%	16.2%	0.9%	1.4%	0.0%	5.7%
Financial Specialists	1.3%	33.3%	2.8%	0.0%	0.0%	7.9%
Computer Specialists	2.5%	4.8%	0.0%	13.7%	0.0%	3.7%
Mathematical Scientists and Technicians	1.9%	0.0%	0.0%	0.0%	0.0%	0.6%
Architects, Surveyors, and Cartographers	1.3%	0.0%	0.0%	1.4%	0.0%	0.6%
Engineers and Related Technicians	0.6%	1.9%	0.0%	71.2%	0.0%	10.8%
Life & Physical Scientists, and Technicians	3.8%	1.0%	0.0%	0.0%	0.0%	1.4%
Social Scientists	2.5%	0.0%	0.9%	0.0%	0.0%	1.0%
Health: Doctors	0.0%	0.0%	0.0%	0.0%	0.0%	0.0%
Health: Registered Nurses	0.0%	0.0%	0.0%	0.0%	100.0%	12.4%
Health: Therapists	0.6%	0.0%	0.9%	0.0%	0.0%	0.4%
Health: Oth Practitnrs, Prof.s, & Suppt Wkrs	7.0%	0.0%	7.3%	0.0%	0.0%	3.7%
Community & Social Service	5.1%	1.0%	1.8%	0.0%	0.0%	2.2%
Legal: Attorneys/Judges	0.0%	0.0%	0.0%	0.0%	0.0%	0.0%
Legal: Legal Support Workers	2.5%	1.0%	0.9%	0.0%	0.0%	1.2%
Education: Early Childhood Teachers	1.9%	0.0%	10.1%	0.0%	0.0%	2.8%
Education: Elementary School Teachers	0.6%	0.0%	17.4%	0.0%	0.0%	3.9%
Education: Middle School Teachers	1.3%	0.0%	8.3%	0.0%	0.0%	2.2%
Education: Secondary School Teachers	5.7%	0.0%	4.6%	0.0%	0.0%	2.8%
Education: Special Education Teachers	0.0%	0.0%	13.8%	0.0%	0.0%	3.0%
Education: Other, except Administrators	8.2%	2.9%	14.7%	0.0%	0.0%	6.3%
continued						

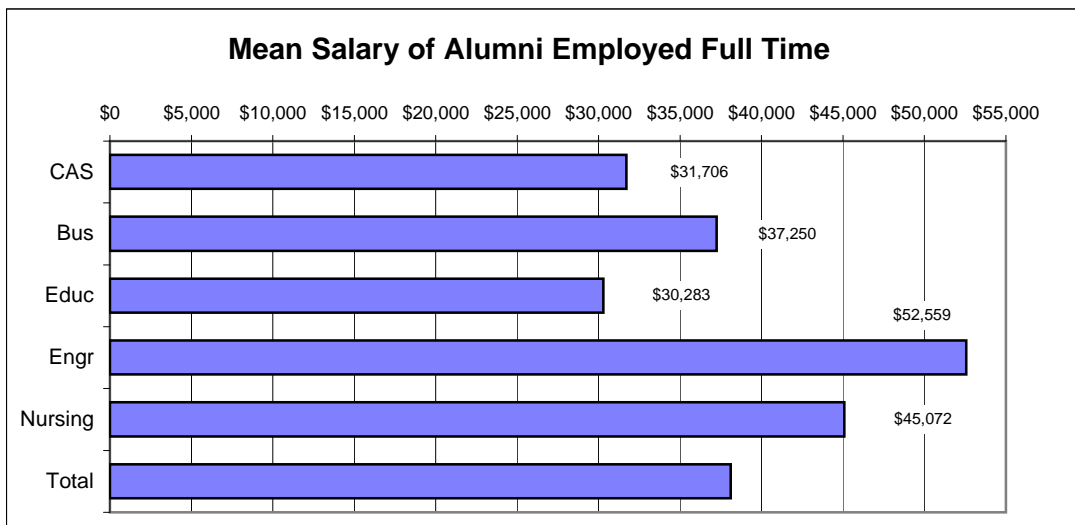
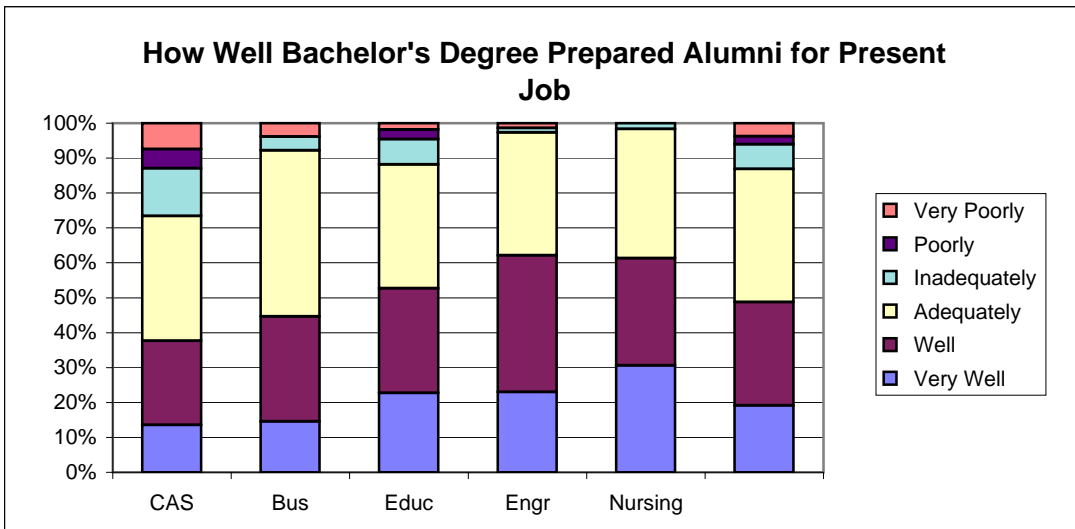
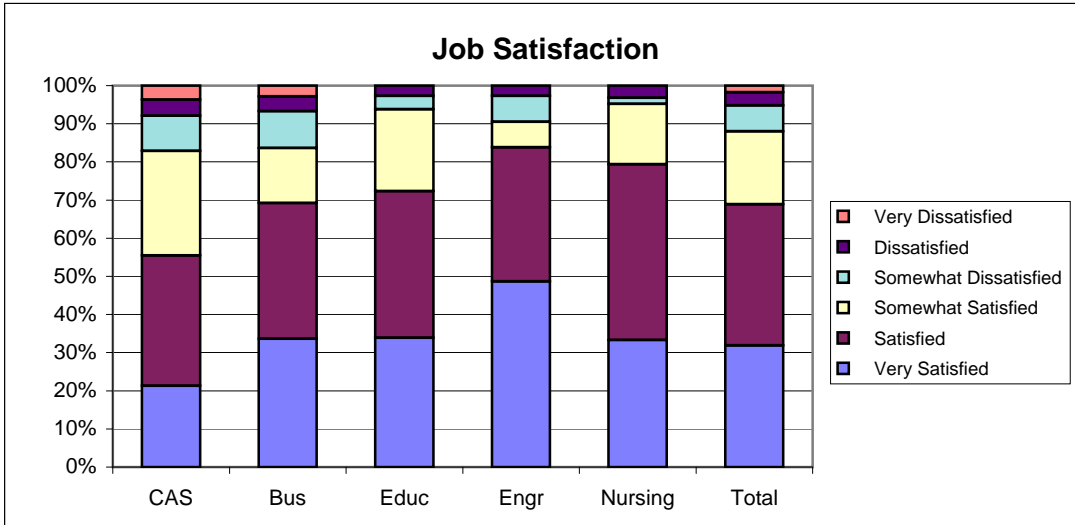
Southern Illinois University Edwardsville
Survey of 2008 Baccalaureate Graduates -- One Year Out
Survey Responses -- Part I
Employment Questions

School Detail, cont.	CAS	Bus	Educ	Engr	Nursing	Total
9a. continuation of Primary Occupation						
Library Occupations	0.0%	0.0%	0.9%	0.0%	0.0%	0.2%
Art and Design Workers	1.9%	0.0%	0.0%	0.0%	0.0%	0.6%
Entertainment, Performers, Sports & Related	1.9%	1.0%	0.9%	1.4%	0.0%	1.2%
Media and Communication Workers	3.8%	0.0%	0.0%	0.0%	0.0%	1.2%
Sales	7.0%	9.5%	3.7%	1.4%	0.0%	5.1%
Office & Administration	10.8%	3.8%	4.6%	0.0%	0.0%	5.1%
Protective Services	3.8%	1.0%	0.0%	0.0%	0.0%	1.4%
Food Preparation & Serving	7.6%	1.9%	0.9%	0.0%	0.0%	3.0%
Buildings & Grounds Maintenance	0.0%	0.0%	0.0%	0.0%	0.0%	0.0%
Personal Care and Service	1.3%	1.9%	1.8%	0.0%	0.0%	1.2%
Farming, Fishing, and Forestry	0.0%	0.0%	0.0%	1.4%	0.0%	0.2%
Construction & Extractive	1.3%	1.0%	0.0%	2.7%	0.0%	1.0%
Installation, Maintenance, & Repair	0.6%	1.0%	0.0%	0.0%	0.0%	0.4%
Production	2.5%	1.9%	0.9%	1.4%	0.0%	1.6%
Transportation and Material Moving	0.0%	0.0%	0.0%	0.0%	0.0%	0.0%
Military	0.6%	0.0%	0.0%	0.0%	0.0%	0.2%
Number Responding	158	105	109	73	63	508
9b. Industry						
Agriculture, Forestry, and Fishing	2.1%	0.0%	0.0%	2.9%	0.0%	1.1%
Mining	0.0%	0.0%	0.0%	0.0%	0.0%	0.0%
Utilities	0.7%	1.1%	0.0%	13.0%	0.0%	2.4%
Construction	1.4%	4.3%	0.0%	23.2%	0.0%	4.9%
Manufacturing	2.1%	9.6%	0.0%	13.0%	0.0%	4.7%
Wholesale Trade	0.0%	1.1%	1.1%	0.0%	0.0%	0.4%
Retail Trade	6.4%	10.6%	2.3%	1.4%	0.0%	4.9%
Transportation	2.1%	5.3%	0.0%	5.8%	0.0%	2.7%
Information	1.4%	3.2%	3.4%	4.3%	0.0%	2.4%
Finance & Insurance	5.7%	21.3%	3.4%	0.0%	0.0%	6.9%
Real Estate & Rental & Leasing	1.4%	4.3%	0.0%	0.0%	0.0%	1.3%
Professional, Scientific & Technical Services	10.0%	8.5%	2.3%	33.3%	0.0%	10.5%
Management of Companies & Enterprises	0.7%	2.1%	0.0%	0.0%	0.0%	0.7%
Admin & Suppt, Waste Mgmt & Remedtn Svcs	0.7%	0.0%	0.0%	1.4%	0.0%	0.4%
Educational Services	19.3%	4.3%	67.0%	0.0%	3.4%	20.5%
Health Care & Social Assistance	15.7%	5.3%	14.8%	0.0%	96.6%	21.4%
Arts, Entertainment & Recreation	6.4%	5.3%	1.1%	0.0%	0.0%	3.3%
Accommodations & Food Services	7.9%	2.1%	1.1%	0.0%	0.0%	3.1%
Other Services (except Public Admin)	10.7%	7.4%	2.3%	1.4%	0.0%	5.6%
Public Administration	5.0%	4.3%	1.1%	0.0%	0.0%	2.7%
Number Responding	140	94	88	69	58	449

2008 Baccalaureate Graduates One Year Out *Employment*



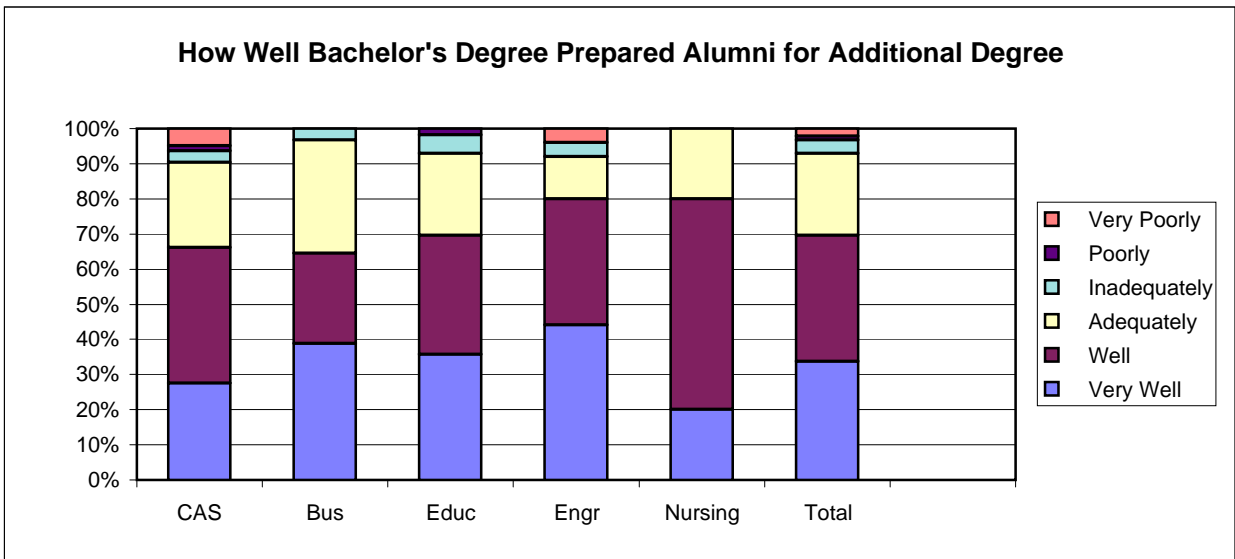
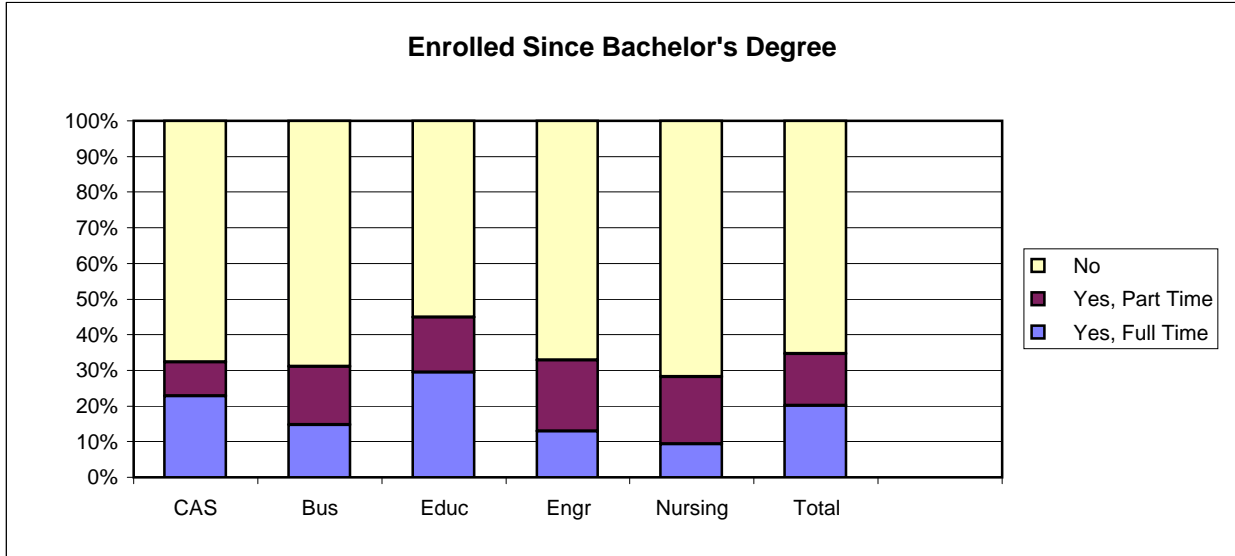
2008 Baccalaureate Graduates One Year Out Employment, cont.



Southern Illinois University Edwardsville
Survey of 2008 Baccalaureate Graduates -- One Year Out
Survey Responses -- Part II
Education Questions

School Detail	CAS	Bus	Educ	Engr	Nursing	Total
Number of Survey Respondents	220	117	149	85	64	635
10. Enrolled in College or University Since Degree?						
Yes, Full Time	22.7%	14.7%	29.5%	12.9%	9.4%	20.2%
Yes, Part Time	9.5%	16.4%	15.4%	20.0%	18.8%	14.5%
No	67.7%	69.0%	55.0%	67.1%	71.9%	65.3%
Number Responding	220	116	149	85	64	634
11. Pursuing or Have Completed an Additional Degree?						
Yes	88.7%	86.1%	87.5%	92.9%	66.7%	86.6%
No	11.3%	13.9%	12.5%	7.1%	33.3%	13.4%
Number Responding	71	36	64	28	18	217
The remaining questions in Part II were to be answered only by respondents who were pursuing or had completed another degree.						
	63	31	56	26	12	188
11b. Pursuing or Completed Which Degree?						
Associate's	1.6%	6.7%	5.7%	0.0%	0.0%	3.3%
Second Bachelor's	4.9%	0.0%	3.8%	0.0%	0.0%	2.8%
Academic Master's (MA, MS, MEd, etc)	29.5%	23.3%	67.9%	80.8%	30.0%	47.2%
Prof. Master's or Ed Specialist	34.4%	63.3%	15.1%	11.5%	40.0%	30.6%
Medicine (MD, OD)	6.6%	0.0%	0.0%	0.0%	0.0%	2.2%
Health Prof. (dentistry, pharmacy, etc.)	6.6%	3.3%	3.8%	0.0%	30.0%	5.6%
Theology/Divinity	0.0%	0.0%	0.0%	0.0%	0.0%	0.0%
Law (LLB, JD)	1.6%	0.0%	0.0%	0.0%	0.0%	0.6%
Doctorate (PhD, EdD, DA, DBA, etc.)	6.6%	0.0%	1.9%	7.7%	0.0%	3.9%
Other	8.2%	3.3%	1.9%	0.0%	0.0%	3.9%
Number Responding	61	30	53	26	10	180
12. How Well Bach. Degree Prepared You for Additional Degree						
Very Well	27.4%	38.7%	35.7%	44.0%	20.0%	33.7%
Well	38.7%	25.8%	33.9%	36.0%	60.0%	35.9%
Adequately	24.2%	32.3%	23.2%	12.0%	20.0%	23.4%
Inadequately	3.2%	3.2%	5.4%	4.0%	0.0%	3.8%
Poorly	1.6%	0.0%	1.8%	0.0%	0.0%	1.1%
Very Poorly	4.8%	0.0%	0.0%	4.0%	0.0%	2.2%
Number Responding	62	31	56	25	10	184

2008 Baccalaureate Graduates One Year Out Additional Education

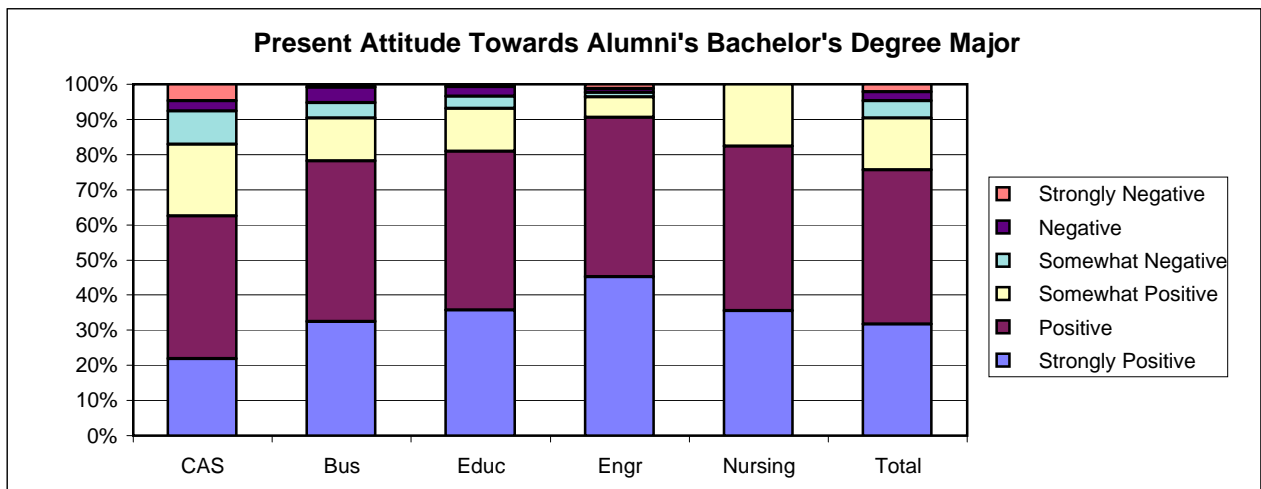
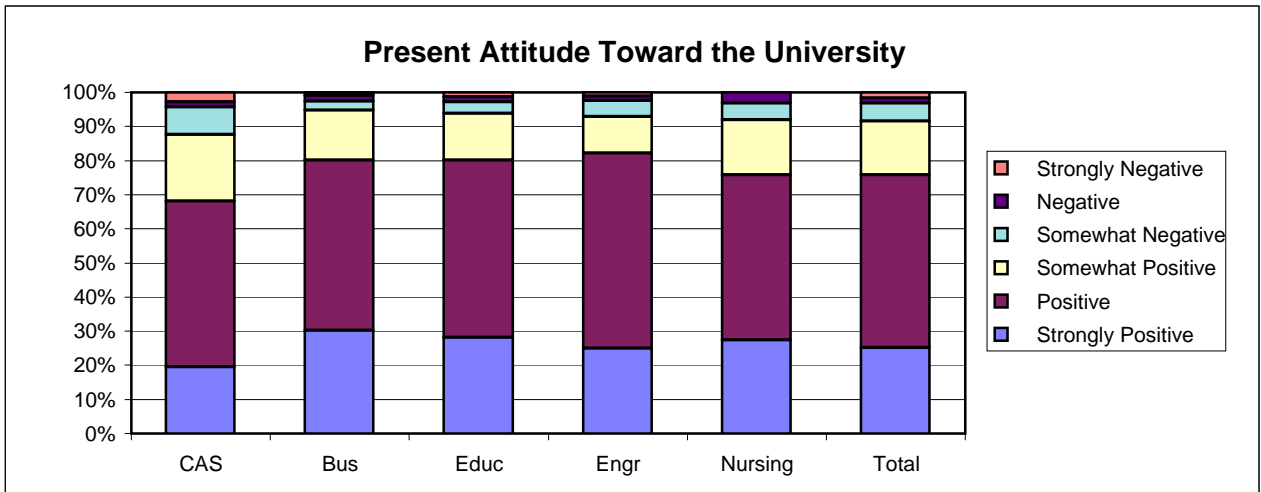


Southern Illinois University Edwardsville
Survey of 2008 Baccalaureate Graduates -- One Year Out
Survey Responses -- Part III
Satisfaction Questions

School Detail	CAS	Bus	Educ	Engr	Nursing	Total
Number of Survey Respondents	220	117	149	85	64	635
13. Present Attitude Towards the University						
Strongly Positive	19.5%	30.2%	28.1%	25.0%	27.4%	25.1%
Positive	48.6%	50.0%	52.1%	57.1%	48.4%	50.8%
Somewhat Positive	19.5%	14.7%	13.7%	10.7%	16.1%	15.7%
Somewhat Negative	8.1%	2.6%	3.4%	4.8%	4.8%	5.2%
Negative	1.4%	1.7%	1.4%	1.2%	3.2%	1.6%
Strongly Negative	2.9%	0.9%	1.4%	1.2%	0.0%	1.6%
Number Responding	210	116	146	84	62	618
14. Present Attitude Towards your Bachelor's Degree Major						
Strongly Positive	21.8%	32.5%	35.6%	45.2%	35.5%	31.6%
Positive	40.8%	45.6%	45.2%	45.2%	46.8%	43.9%
Somewhat Positive	20.4%	12.3%	12.3%	6.0%	17.7%	14.7%
Somewhat Negative	9.5%	4.4%	3.4%	1.2%	0.0%	5.0%
Negative	2.8%	4.4%	2.7%	1.2%	0.0%	2.6%
Strongly Negative	4.7%	0.9%	0.7%	1.2%	0.0%	2.1%
Number Responding	211	114	146	84	62	617

05/11/2010

2008 Baccalaureate Graduates One Year Out Satisfaction



Southern Illinois University Edwardsville
Survey of 2008 Baccalaureate Graduates -- One Year Out
Survey Responses -- Part IV
Educational Practices Questions

School Detail	CAS	Bus	Educ	Engr	Nursing	Total
Number of Survey Respondents	220	117	149	85	64	635
15. Faculty in Major Were Accessible Outside of Class						
Very Often	39.7%	38.8%	39.9%	33.3%	34.4%	38.2%
Often	47.9%	46.6%	44.6%	54.8%	40.6%	47.1%
Sometimes	9.6%	13.8%	13.5%	8.3%	20.3%	12.2%
Infrequently	2.3%	0.9%	2.0%	3.6%	3.1%	2.2%
Never	0.5%	0.0%	0.0%	0.0%	1.6%	0.3%
Number Responding	219	116	148	84	64	631
16. In Major, Student was Expected to Work Cooperatively with Other Students						
Very Often	28.8%	58.1%	59.5%	31.8%	50.0%	43.9%
Often	39.3%	37.6%	31.8%	58.8%	40.6%	40.0%
Sometimes	26.0%	3.4%	8.8%	8.2%	7.8%	13.6%
Infrequently	5.5%	0.9%	0.0%	0.0%	1.6%	2.2%
Never	0.5%	0.0%	0.0%	1.2%	0.0%	0.3%
Number Responding	219	117	148	85	64	633
17. In Major, Faculty Encouraged Student to Challenge Ideas (student's, other students, and in readings & materials)						
Very Often	28.4%	20.5%	31.8%	14.1%	35.9%	26.6%
Often	36.2%	45.3%	37.8%	38.8%	23.4%	37.3%
Sometimes	28.4%	29.1%	20.9%	32.9%	31.3%	27.7%
Infrequently	6.4%	5.1%	9.5%	12.9%	9.4%	8.1%
Never	0.5%	0.0%	0.0%	1.2%	0.0%	0.3%
Number Responding	218	117	148	85	64	632
18. In Major, Faculty Used Appropriate Teaching Activities to Help Student Learn						
Very Often	28.8%	23.9%	31.8%	15.3%	25.0%	26.4%
Often	47.5%	51.3%	46.6%	62.4%	42.2%	49.4%
Sometimes	20.5%	23.9%	19.6%	18.8%	25.0%	21.2%
Infrequently	2.7%	0.9%	1.4%	3.5%	6.3%	2.5%
Never	0.5%	0.0%	0.7%	0.0%	1.6%	0.5%
Number Responding	219	117	148	85	64	633
19. In Major, Faculty had High Expectations for Quality Of Student Work						
Very Often	33.3%	35.9%	38.5%	30.6%	43.8%	35.7%
Often	47.9%	47.0%	46.6%	50.6%	43.8%	47.4%
Sometimes	12.8%	16.2%	12.8%	17.6%	12.5%	14.1%
Infrequently	5.5%	0.9%	2.0%	1.2%	0.0%	2.7%
Never	0.5%	0.0%	0.0%	0.0%	0.0%	0.2%
Number Responding	219	117	148	85	64	633
20. In Major, Faculty Provided Timely Feedback						
Very Often	30.6%	25.6%	37.2%	21.4%	25.0%	29.4%
Often	44.7%	47.0%	48.0%	56.0%	45.3%	47.5%
Sometimes	21.0%	24.8%	11.5%	17.9%	26.6%	19.6%
Infrequently	3.7%	2.6%	2.7%	3.6%	1.6%	3.0%
Never	0.0%	0.0%	0.7%	1.2%	1.6%	0.5%
Number Responding	219	117	148	84	64	632

Southern Illinois University Edwardsville
Survey of 2008 Baccalaureate Graduates -- One Year Out
Survey Responses -- Part IV
Educational Practices Questions

School Detail, cont.	CAS	Bus	Educ	Engr	Nursing	Total
21. In Major, Faculty Encouraged Students' Questions and Discussion in Class						
Very Often	41.7%	39.3%	51.4%	36.5%	37.5%	42.4%
Often	43.1%	42.7%	39.2%	51.8%	46.9%	43.7%
Sometimes	11.9%	17.1%	8.8%	8.2%	14.1%	11.9%
Infrequently	3.2%	0.9%	0.7%	2.4%	0.0%	1.7%
Never	0.0%	0.0%	0.0%	1.2%	1.6%	0.3%
Number Responding	218	117	148	85	64	632
22. In Major, Student Spent Necessary Time and Energy to Come to Class Prepared						
Very Often	47.7%	41.9%	54.7%	30.6%	43.8%	45.6%
Often	36.7%	47.0%	39.9%	56.5%	45.3%	42.9%
Sometimes	13.8%	10.3%	5.4%	11.8%	10.9%	10.6%
Infrequently	1.8%	0.9%	0.0%	1.2%	0.0%	0.9%
Never	0.0%	0.0%	0.0%	0.0%	0.0%	0.0%
Number Responding	218	117	148	85	64	632

05/11/2010

Southern Illinois University Edwardsville
Survey of 2008 Baccalaureate Graduates -- One Year Out
Survey Responses -- Part V
Program Quality Questions

School Detail	CAS	Bus	Educ	Engr	Nursing	Total
Number of Survey Respondents	220	117	149	85	64	635
23A. Quality of Major in Offering						
Sufficient Courses						
Excellent	31.7%	41.9%	44.6%	17.6%	50.0%	36.6%
Good	45.9%	41.9%	45.3%	51.8%	42.2%	45.4%
Fair	16.5%	15.4%	8.1%	24.7%	6.3%	14.4%
Poor	6.0%	0.9%	2.0%	5.9%	1.6%	3.6%
Number Responding	218	117	148	85	64	632
23B. Quality of Major in Offering						
Convenient Class Times						
Excellent	23.3%	28.2%	34.5%	15.3%	40.6%	27.5%
Good	48.4%	53.8%	41.9%	45.9%	32.8%	46.0%
Fair	23.3%	14.5%	21.6%	30.6%	25.0%	22.4%
Poor	5.0%	3.4%	2.0%	8.2%	1.6%	4.1%
Number Responding	219	117	148	85	64	633
23C. Quality of Major in Offering						
Logical Class Sequences						
Excellent	28.3%	36.8%	39.9%	31.8%	42.2%	34.4%
Good	44.7%	51.3%	44.6%	52.9%	42.2%	46.8%
Fair	21.0%	12.0%	13.5%	11.8%	14.1%	15.6%
Poor	5.9%	0.0%	2.0%	3.5%	1.6%	3.2%
Number Responding	219	117	148	85	64	633
24 Quality of Faculty in Major						
Excellent	44.0%	43.1%	50.0%	33.3%	41.3%	43.6%
Good	39.4%	49.1%	40.5%	60.5%	44.4%	44.7%
Fair	13.4%	6.9%	8.8%	2.5%	12.7%	9.6%
Poor	3.2%	0.9%	0.7%	3.7%	1.6%	2.1%
Number Responding	216	116	148	81	63	624
25 Grading Standards in Major Were:						
Too High	3.2%	3.4%	1.4%	1.2%	17.2%	4.0%
About Right	87.7%	90.5%	92.6%	92.9%	82.8%	89.5%
Too Low	9.1%	6.0%	6.1%	6.0%	0.0%	6.5%
Number Responding	219	116	148	84	64	631

05/12/2010

Southern Illinois University Edwardsville
Survey of 2008 Baccalaureate Graduates -- One Year Out
Survey Responses -- Part VI
Educational Effectiveness Questions

School Detail	CAS	Bus	Educ	Engr	Nursing	Total
Number of Survey Respondents	220	117	149	85	64	635
26. Helpfulness of University Experiences in:						
A. Developing Critical Thinking Ability						
Extremely Helpful	20.0%	12.8%	17.4%	21.2%	18.8%	18.1%
Very Helpful	41.4%	48.7%	45.6%	54.1%	48.4%	46.1%
Moderately Helpful	33.2%	35.0%	28.2%	22.4%	23.4%	29.9%
Slightly Helpful	4.1%	3.4%	7.4%	1.2%	4.7%	4.4%
Not Helpful	1.4%	0.0%	1.3%	1.2%	4.7%	1.4%
Number Responding	220	117	149	85	64	635
B. Developing Sense of Ethics						
Extremely Helpful	12.3%	19.7%	14.8%	15.3%	15.6%	15.0%
Very Helpful	34.7%	45.3%	35.6%	34.1%	45.3%	37.9%
Moderately Helpful	33.8%	22.2%	31.5%	35.3%	21.9%	30.1%
Slightly Helpful	12.3%	10.3%	14.1%	9.4%	12.5%	12.0%
Not Helpful	6.8%	2.6%	4.0%	5.9%	4.7%	5.0%
Number Responding	219	117	149	85	64	634
C. Understanding People with Different Backgrounds, Habits, Values, Appearances and Abilities						
Extremely Helpful	24.5%	23.9%	24.2%	10.6%	18.8%	21.9%
Very Helpful	33.2%	35.0%	41.6%	30.6%	43.8%	36.2%
Moderately Helpful	30.9%	29.9%	22.1%	42.4%	28.1%	29.9%
Slightly Helpful	8.2%	8.5%	9.4%	9.4%	7.8%	8.7%
Not Helpful	3.2%	2.6%	2.7%	7.1%	1.6%	3.3%
Number Responding	220	117	149	85	64	635
D. Becoming a More Active Citizen						
Extremely Helpful	14.1%	10.3%	13.5%	10.6%	7.8%	12.1%
Very Helpful	22.3%	20.5%	35.8%	22.4%	43.8%	27.3%
Moderately Helpful	33.2%	35.9%	23.0%	31.8%	28.1%	30.6%
Slightly Helpful	17.3%	19.7%	15.5%	20.0%	12.5%	17.2%
Not Helpful	13.2%	13.7%	12.2%	15.3%	7.8%	12.8%
Number Responding	220	117	148	85	64	634
E. Improving Quality of Life (aside from financial benefits)						
Extremely Helpful	14.2%	10.3%	16.8%	15.3%	10.9%	13.9%
Very Helpful	27.4%	38.5%	36.2%	34.1%	35.9%	33.3%
Moderately Helpful	34.7%	27.4%	28.2%	35.3%	34.4%	31.9%
Slightly Helpful	16.4%	15.4%	12.8%	7.1%	10.9%	13.6%
Not Helpful	7.3%	8.5%	6.0%	8.2%	7.8%	7.4%
Number Responding	219	117	149	85	64	634
F. Developing Reasoning Skills						
Extremely Helpful	21.9%	15.4%	18.8%	28.2%	17.2%	20.3%
Very Helpful	39.7%	46.2%	49.0%	50.6%	48.4%	45.4%
Moderately Helpful	30.6%	31.6%	24.8%	17.6%	26.6%	27.3%
Slightly Helpful	5.9%	6.8%	4.0%	2.4%	3.1%	4.9%
Not Helpful	1.8%	0.0%	3.4%	1.2%	4.7%	2.1%
Number Responding	219	117	149	85	64	634

Southern Illinois University Edwardsville
Survey of 2008 Baccalaureate Graduates -- One Year Out
Survey Responses -- Part VI
Educational Effectiveness Questions

School Detail, cont.	CAS	Bus	Educ	Engr	Nursing	Total
G. Viewing Problems from Different Perspectives						
Extremely Helpful	25.9%	21.4%	23.5%	32.9%	10.9%	23.9%
Very Helpful	38.2%	41.0%	44.3%	41.2%	57.8%	42.5%
Moderately Helpful	27.3%	32.5%	22.8%	21.2%	25.0%	26.1%
Slightly Helpful	7.3%	5.1%	6.0%	3.5%	4.7%	5.8%
Not Helpful	1.4%	0.0%	3.4%	1.2%	1.6%	1.6%
Number Responding	220	117	149	85	64	635
H. Developing Ability to Solve Problems						
Extremely Helpful	22.3%	17.1%	21.5%	44.7%	14.1%	23.3%
Very Helpful	44.5%	53.8%	42.3%	43.5%	59.4%	47.1%
Moderately Helpful	25.0%	24.8%	25.5%	8.2%	18.8%	22.2%
Slightly Helpful	6.4%	4.3%	6.7%	2.4%	6.3%	5.5%
Not Helpful	1.8%	0.0%	4.0%	1.2%	1.6%	1.9%
Number Responding	220	117	149	85	64	635
I. Making Informed Decisions as a Citizen						
Extremely Helpful	15.5%	16.2%	18.2%	14.1%	15.6%	16.1%
Very Helpful	35.0%	36.8%	33.8%	34.1%	42.2%	35.6%
Moderately Helpful	31.4%	32.5%	30.4%	32.9%	29.7%	31.4%
Slightly Helpful	13.2%	11.1%	9.5%	15.3%	10.9%	12.0%
Not Helpful	5.0%	3.4%	8.1%	3.5%	1.6%	4.9%
Number Responding	220	117	148	85	64	634
J. Developing Writing Skills						
Extremely Helpful	28.8%	20.5%	27.0%	16.5%	26.6%	25.0%
Very Helpful	35.6%	41.9%	29.1%	30.6%	32.8%	34.3%
Moderately Helpful	27.9%	24.8%	33.1%	30.6%	26.6%	28.8%
Slightly Helpful	4.1%	9.4%	8.8%	12.9%	7.8%	7.7%
Not Helpful	3.7%	3.4%	2.0%	9.4%	6.3%	4.3%
Number Responding	219	117	148	85	64	633
K. Developing Oral Communication Skills						
Extremely Helpful	26.4%	24.3%	22.1%	20.0%	21.9%	23.7%
Very Helpful	37.7%	47.8%	43.6%	31.8%	42.2%	40.6%
Moderately Helpful	25.5%	20.9%	23.5%	29.4%	25.0%	24.6%
Slightly Helpful	8.6%	5.2%	8.1%	12.9%	6.3%	8.2%
Not Helpful	1.8%	1.7%	2.7%	5.9%	4.7%	2.8%
Number Responding	220	115	149	85	64	635
L. Developing Knowledge of Scientific and Technological Developments						
Extremely Helpful	14.5%	17.1%	15.4%	49.4%	23.4%	20.8%
Very Helpful	32.3%	29.1%	44.3%	40.0%	45.3%	36.9%
Moderately Helpful	32.3%	35.9%	23.5%	8.2%	20.3%	26.5%
Slightly Helpful	13.6%	16.2%	12.8%	1.2%	9.4%	11.8%
Not Helpful	7.3%	1.7%	4.0%	1.2%	1.6%	4.1%
Number Responding	220	117	149	85	64	635

Southern Illinois University Edwardsville
Survey of 2008 Baccalaureate Graduates -- One Year Out
Survey Responses -- Part VI
Educational Effectiveness Questions

School Detail, cont.	CAS	Bus	Educ	Engr	Nursing	Total
27. Undergraduate Education Broadened Interest Beyond Subjects in Major						
Strongly Agree	22.4%	16.2%	19.5%	17.6%	21.9%	19.9%
Agree	50.7%	59.0%	49.0%	54.1%	39.1%	51.1%
Neutral	19.2%	17.1%	24.8%	21.2%	31.3%	21.6%
Disagree	6.4%	7.7%	6.0%	3.5%	6.3%	6.2%
Strongly Disagree	1.4%	0.0%	0.7%	3.5%	1.6%	1.3%
Number Responding	219	117	149	85	64	634
28. Importance of College Education to:						
A. Personal Life						
Very Important	59.5%	54.7%	62.4%	65.9%	62.5%	60.5%
Moderately Important	24.5%	33.3%	28.2%	24.7%	31.3%	27.7%
Slightly Important	10.9%	8.5%	6.0%	4.7%	3.1%	7.7%
Not Important	5.0%	3.4%	3.4%	4.7%	3.1%	4.1%
Number Responding	220	117	149	85	64	635
B. Community Life						
Very Important	27.3%	23.9%	42.3%	21.2%	45.3%	31.2%
Moderately Important	37.3%	44.4%	33.6%	43.5%	35.9%	38.4%
Slightly Important	22.3%	23.1%	20.1%	24.7%	10.9%	21.1%
Not Important	13.2%	8.5%	4.0%	10.6%	7.8%	9.3%
Number Responding	220	117	149	85	64	635
C. Professional Life						
Very Important	50.9%	70.1%	75.0%	78.8%	89.1%	67.7%
Moderately Important	24.5%	20.5%	16.9%	17.6%	9.4%	19.6%
Slightly Important	13.6%	6.8%	4.7%	3.5%	1.6%	7.7%
Not Important	10.9%	2.6%	3.4%	0.0%	0.0%	5.0%
Number Responding	220	117	148	85	64	634
29. Quality of SIUE Education Relative to That of Friends at Other Schools						
Among the Best	9.6%	16.2%	22.1%	17.6%	17.2%	15.6%
Above Average	40.2%	49.6%	43.6%	45.9%	40.6%	43.5%
Average	42.0%	29.9%	31.5%	32.9%	37.5%	35.6%
Below Average	5.5%	3.4%	2.0%	2.4%	4.7%	3.8%
Among the Worst	2.7%	0.9%	0.7%	1.2%	0.0%	1.4%
Number Responding	219	117	149	85	64	634
30. Involvement Since Bachelor's Degree with:						
A. Organized, Formal, Career Related Learning (non-degree)						
Currently Involved	27.1%	24.1%	29.9%	30.6%	54.0%	30.4%
Have Been Involved	28.4%	28.4%	36.1%	32.9%	31.7%	31.2%
Never Involved	44.5%	47.4%	34.0%	36.5%	14.3%	38.5%
Number Responding	218	116	147	85	63	629
B. Personal Enrichment Studies						
Currently Involved	23.7%	13.7%	24.0%	20.2%	30.2%	22.1%
Have Been Involved	38.4%	22.2%	36.3%	29.8%	25.4%	32.4%
Never Involved	37.9%	64.1%	39.7%	50.0%	44.4%	45.5%
Number Responding	219	117	146	84	63	629

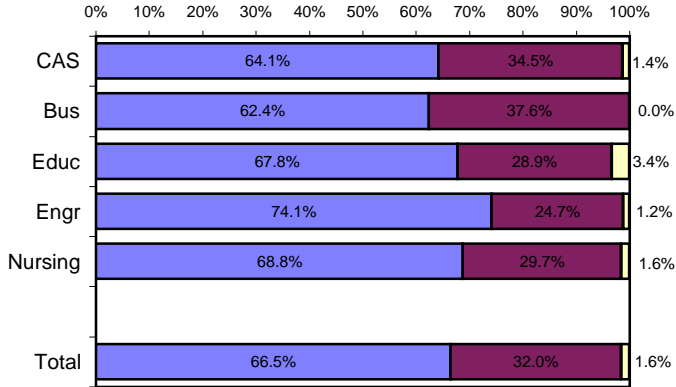
Southern Illinois University Edwardsville
Survey of 2008 Baccalaureate Graduates -- One Year Out
Survey Responses -- Part VI
Educational Effectiveness Questions

School Detail, cont.	CAS	Bus	Educ	Engr	Nursing	Total
C. Professional Activities or Organizations						
Currently Involved	29.8%	32.5%	46.6%	36.5%	44.4%	36.6%
Have Been Involved	31.7%	33.3%	32.4%	41.2%	42.9%	34.5%
Never Involved	38.5%	34.2%	20.9%	22.4%	12.7%	28.8%
Number Responding	218	117	148	85	63	631
D. Volunteer Work / Community Svc Activities or Organizations						
Currently Involved	28.3%	30.8%	31.8%	15.3%	39.7%	29.0%
Have Been Involved	35.6%	32.5%	43.2%	35.3%	31.7%	36.4%
Never Involved	36.1%	36.8%	25.0%	49.4%	28.6%	34.7%
Number Responding	219	117	148	85	63	632
E. Social / Recreational Activities or Organizations						
Currently Involved	37.0%	41.0%	40.5%	26.5%	44.4%	37.9%
Have Been Involved	35.6%	34.2%	39.9%	45.8%	34.9%	37.6%
Never Involved	27.4%	24.8%	19.6%	27.7%	20.6%	24.4%
Number Responding	219	117	148	83	63	630
F. Political Activities or Organizations						
Currently Involved	8.2%	5.1%	6.1%	3.5%	7.9%	6.5%
Have Been Involved	21.4%	18.8%	18.2%	15.3%	22.2%	19.4%
Never Involved	70.5%	76.1%	75.7%	81.2%	69.8%	74.1%
Number Responding	220	117	148	85	63	633
G. Religious / Ethical Activities or Organizations						
Currently Involved	23.3%	30.8%	25.2%	27.1%	33.3%	26.6%
Have Been Involved	24.7%	29.1%	34.7%	23.5%	28.6%	28.1%
Never Involved	52.1%	40.2%	40.1%	49.4%	38.1%	45.3%
Number Responding	219	117	147	85	63	631
H. Support or Participation in the Arts (music, drama, dance, art)						
Currently Involved	27.9%	11.1%	16.9%	7.1%	20.6%	18.7%
Have Been Involved	28.8%	20.5%	35.1%	23.5%	22.2%	27.4%
Never Involved	43.4%	68.4%	48.0%	69.4%	57.1%	54.0%
Number Responding	219	117	148	85	63	632
I. Reading books not directly related to your job						
Currently Involved	68.2%	54.3%	62.6%	51.8%	68.8%	62.2%
Have Been Involved	24.5%	30.2%	30.6%	27.1%	25.0%	27.4%
Never Involved	7.3%	15.5%	6.8%	21.2%	6.3%	10.4%
Number Responding	220	116	147	85	64	632

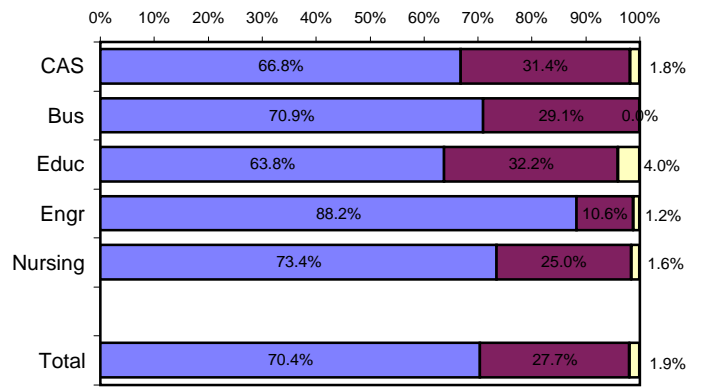
Helpfulness of University Experiences in:

■ Very to Extremely Helpful
 ■ Slightly to Moderately Helpful
 ■ Not Helpful

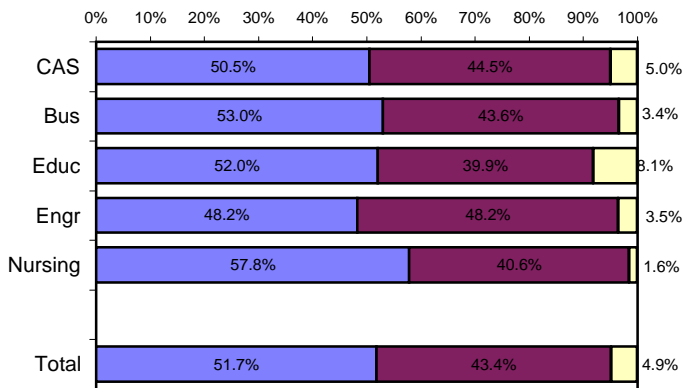
Viewing Problems from Different Perspectives



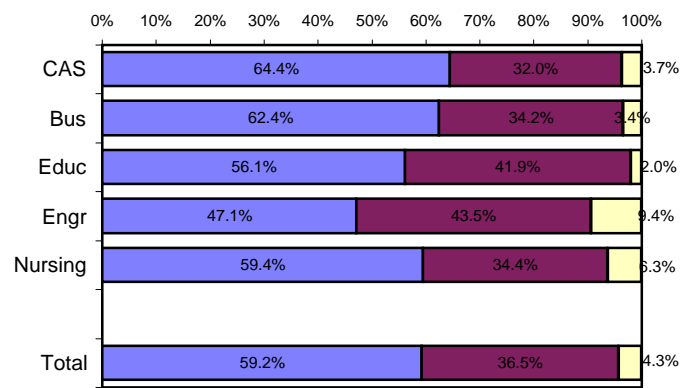
Developing Ability to Solve Problems



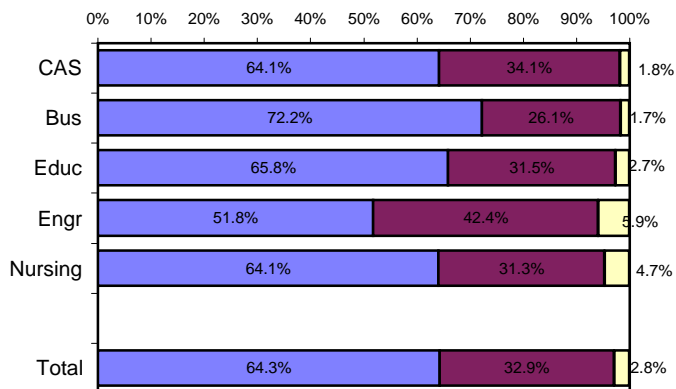
Making Informed Decisions as a Citizen



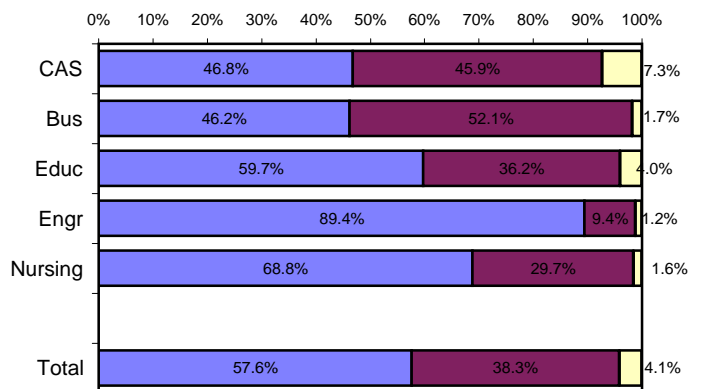
Developing Writing Skills



Developing Oral Communication Skills



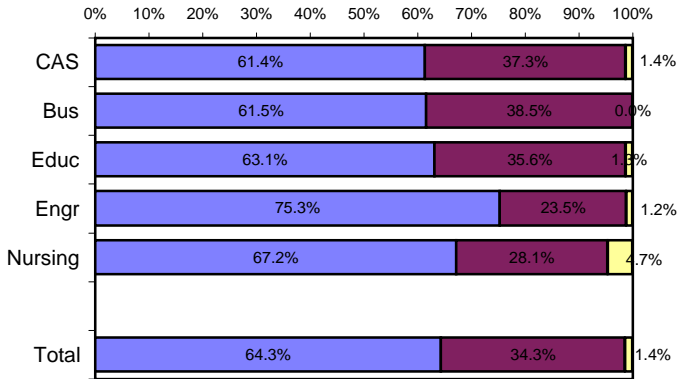
Developing Knowledge of Scientific and Technological Developments



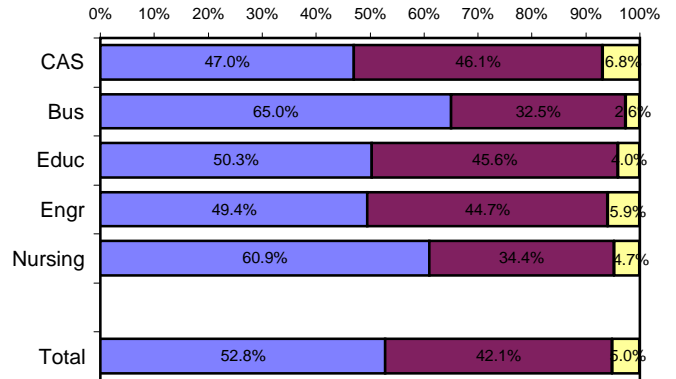
Helpfulness of University Experiences in:

■ Very to Extremely Helpful
 ■ Slightly to Moderately Helpful
 ■ Not Helpful

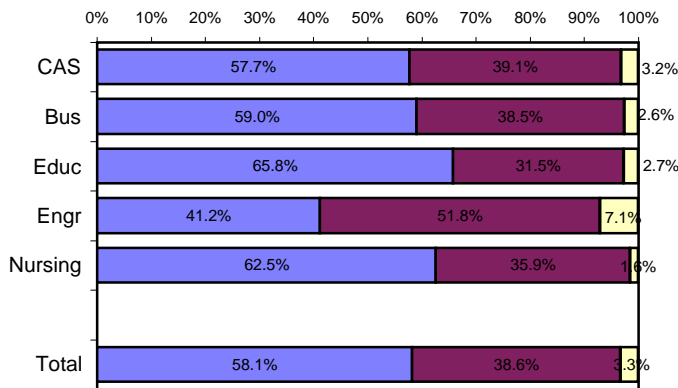
Developing Critical Thinking Ability



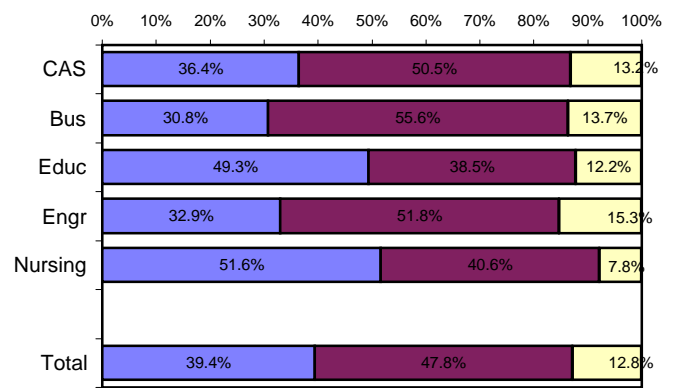
Developing Sense of Ethics



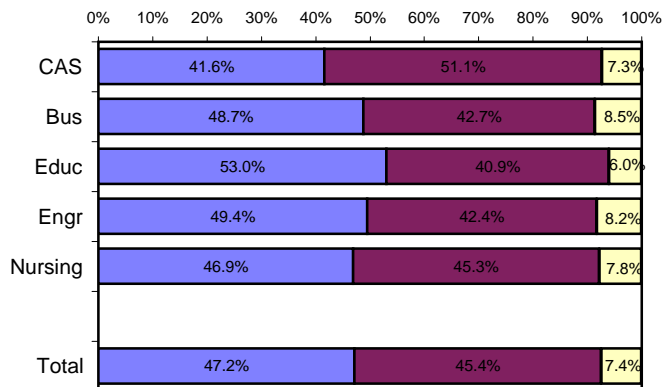
Understanding People with Different Backgrounds



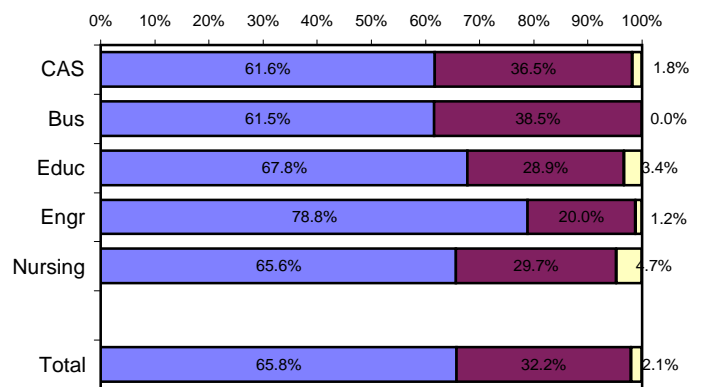
Becoming a More Active Citizen



Improving Quality of Life (aside from financial benefits)



Developing Reasoning Skills



Appendix A

Sample Questionnaire

SOUTHERN ILLINOIS UNIVERSITY EDWARDSVILLE

SURVEY OF 2008 BACCALAUREATE GRADUATES ONE YEAR AFTER GRADUATION

Most of the questions in this survey can be answered simply by circling the appropriate number. We hope you will give us your help and valuable input so that we can design programs that better serve the needs of SIUE students. PLEASE ANSWER THESE QUESTIONS ONLY IN REGARD TO THE SIUE UNDERGRADUATE DEGREE YOU RECEIVED LAST YEAR. Your individual responses to this questionnaire will be kept completely confidential. Thank you for your cooperation. Please return this survey in the envelope provided.

I. Employment

1. Are you currently employed (including self-employed)?

- 1 Yes, full-time 3 No, but am seeking employment
2 Yes, part-time 4 No, and am not seeking employment

If you are NOT employed (responses 3 and 4), skip to *Section II*.

2. What is the Zip Code of your place of employment (e.g., your actual workplace, not corporate headquarters)? _____

3. How would you classify your primary employer?

- | | |
|--|--|
| 1 Self-employed or private practice | 6 Health agency (e.g., hospital, clinic) |
| 2 Business (industrial, commercial or service) | 7 Federal, state, or local government |
| 3 Professional firm (e.g., engineering, law) | 8 Armed services |
| 4 College or university | 9 Non-profit (non-government) |
| 5 Elementary/secondary school (including cooperatives) | 10 Other (please specify) _____ |

4. How satisfied are you with your current job?

- 1 Very Satisfied 2 Satisfied 3 Somewhat Satisfied 4 Somewhat Dissatisfied 5 Dissatisfied 6 Very Dissatisfied

5. How closely related is your current job to your bachelor's degree major?

- 1 Closely Related 2 Related 3 Unrelated

If you marked "3" (unrelated), is this by choice?

- 1 Yes 2 No

6. When did you secure your first job following receipt of your bachelor's degree?

- 1 Held the same job while enrolled
2 Secured job by time of graduation
3 Secured job after graduation

If you marked "3," how many months after graduation did you secure employment?

- 1 Less than 1 month 3 Between 3 and 6 months 5 More than 9 months
2 Between 1 and 3 months 4 Between 6 and 9 months

7. What is your annual earned income before taxes in your current job? _____

8. In general, how well did your bachelor's degree prepare you for your present job?

- 1 Very Well 2 Well 3 Adequately 4 Inadequately 5 Poorly 6 Very poorly

9. Please circle on the lists below both your **primary occupation**¹ (what you do) and the **industry** in which you are employed (where you do it). Although some occupations typically work within one industry, they may be employed in other industries also. An example would be a school nurse — Health: Registered Nurses (11) in Educational Services (15). Examples of the types of occupations contained in each category are provided in italics.

Please write in your actual job title _____ (optional)

Circle One

Occupational Categories

- 01 **Management** (such as Executives, Financial Managers, Human Resources Managers, Sales & Agricultural Managers, Educational Administrators, Health Administrators)
- 02 **Business Operations** (such as Buyers & Purchasing Agents; Insurance Claims Adjusters/Examiners; Human Resources, Training, & Labor Relations Specialists; Management Analysts)
- 03 **Financial Specialists** (such as Accountants, Assessors, Appraisers, Financial & Credit Analysts, Underwriters, Loan Counselors/Officers)
- 04 **Computer Specialists** (such as Computer & Information Scientists, Programmers, Software Specialists, Database & Network Administrators and System Analysts)
- 05 **Mathematical Scientists and Technicians** (such as Mathematicians, Statisticians, Actuaries, & Mathematical Technicians)
- 06 **Architects, Surveyors, and Cartographers**
- 07 **Engineers and Related Technicians** (such as Agricultural, Civil, Computer Hardware, Electrical, Industrial, Mechanical, Materials & Construction Engineers and Technicians)
- 08 **Life and Physical Scientists and Technicians** (such as Agricultural & Food Scientists, Biologists, Medical Scientists, Chemists, Physicists, Atmospheric & Environmental Scientists, and Related Technicians)
- 09 **Social Scientists** (such as Economists, Psychologists, Market & Survey Researchers, Geographers, Historians, Sociologists, Anthropologists, Political Scientists & Urban Planners)
- 10 **Health: Doctors** (such as Physicians & Surgeons, Dentists, Veterinarians, Optometrists, Podiatrists, and Chiropractors)
- 11 **Health: Registered Nurses**
- 12 **Health: Therapists** (such as Occupational, Physical, Recreational, & Speech Therapists)
- 13 **Health: Other Health Practitioners, Professionals, and Support Workers** (such as Pharmacists, Dieticians, Physician Assistants, and all other Technicians/Assistants/Aides)
- 14 **Community and Social Service** (such as Counselors, Social Workers, Community & Religious Workers, Probation Officers.)
- 15 **Legal: Attorneys/Judges**
- 16 **Legal: Legal Support Workers** (such as Inspectors & Examiners, Legal Assistants, Safety & Health Inspectors)
- 17 **Education: Early Childhood Teachers** (such as Day Care, Pre-School, and Kindergarten Teachers)
- 18 **Education: Elementary School Teachers**
- 19 **Education: Middle School Teachers**
- 20 **Education: Secondary School Teachers**
- 21 **Education: Special Education Teachers**
- 22 **Education: Other, except Administrators (see #1)** (such as Postsecondary Teachers, Vocational Teachers, Teaching & Research Assistants, School Counselors, Other Teachers, Training Specialists, Aides & Assistants)
- 23 **Library Occupations** (such as Librarians, Archivists, Curators, and Library Technicians)
- 24 **Arts and Design Workers** (such as Designers and Fine & Craft Artists)
- 25 **Entertainment, Performers, Sports and Related Workers** (such as Musicians, Singers, Dancers, Actors, Producers, Directors, Composers, Athletes, Coaches, & Referees)
- 26 **Media and Communication Workers** (such as Writers & Editors, Announcers, News Analysts & Reporters, Public Relation Specialists, and Media & Communication Equipment Workers)
- 27 **Sales** (such as Real Estate, Retail, Insurance, & Securities Sales Agents; Wholesale & Manufacturing Sales Representatives; Telemarketers)
- 28 **Office and Administration** (such as Clerical & Support Personnel, Clerks, Claims Examiners, Tellers, Scheduling & Distribution Agents)
- 29 **Protective Services** (such as Fire Fighters, Correctional Officers, Police, Life Guards, Security Guards, Investigators)
- 30 **Food Preparation and Serving** (such as Cooks, Bartenders, Food Service Workers & Servers)
- 31 **Buildings and Grounds Maintenance** (such as Janitors, Cleaners, Landscaping & Groundskeeping Laborers)
- 32 **Personal Care and Services** (such as Flight Attendants, Child Care Workers, Hairstylists & Personal Care Workers, Hotel & Travel Industry Workers)
- 33 **Farming, Fishing, and Forestry** (such as Farm Workers, Animal Care Workers, Foresters, Loggers)
- 34 **Construction and Extractive** (such as Carpenters; Electricians; Painters; Construction, Oil & Mining Wrks; Plumbers)
- 35 **Installation, Maintenance, and Repair** (such as Telecommunications Workers; Automotive Repairers; Heating, Air Conditioning & Refrigeration Mechanics & Installers)
- 36 **Production** (such as Electrical & Electronic Equipment Assemblers; Food, Metal, Plastics, Printing, & Photography Industry Technicians & Workers)
- 37 **Transportation and Material Moving** (such as Pilots, Drivers, Air Traffic Controllers)
- 38 **Military** (Officers & Enlisted Personnel)

Circle One

Industrial Categories

- | | | |
|---------------------------------------|--|--|
| 01 Agriculture, Forestry, and Fishing | 09 Information | 15 Management & Remediation Svcs |
| 02 Mining | 10 Finance and Insurance | 16 Educational Services |
| 03 Utilities | 11 Real Estate and Rental and Leasing | 17 Health Care and Social Assistance |
| 04 Construction | 12 Professional, Scientific and Technical Services | 18 Arts, Entertainment and Recreation |
| 05 Manufacturing | 13 Management of Companies and Enterprises | 19 Accommodations and Food Services |
| 06 Wholesale Trade | 14 Administrative and Support, Waste | 20 Other Services (except Public Administration) |
| 07 Retail Trade | | |
| 08 Transportation | | |

¹For some occupations, such as doctors, the occupation is not appropriate for students one year after earning a baccalaureate degree. This complete listing is also used for surveys of alumni five-years and nine-years after graduation.

II. Education

10. Have you enrolled in a college or university since earning your bachelor's degree?

- 1 Yes, full-time 2 Yes, part-time 3 No

If you have NOT enrolled in a college or university (response "3"), skip to *Section III*.

11. Are you pursuing (or have you completed) an additional degree since earning your bachelor's?

- 1 Yes 2 No (If your answer is "no," skip to *Section III*.)

If you are pursuing (or have completed) another degree, please indicate which degree below:

- | | |
|---|---|
| 01 Associate's | 06 Health Professional (dentistry, pharmacy, podiatry, optometry, etc.) |
| 02 Second Bachelor's | 07 Theology/Divinity |
| 03 Academic Master's (MA, MS, MEd, etc.) | 08 Law (LLB, JD) |
| 04 Professional Master's (MBA, MSW, MFA, MPA, etc.) or Education Specialist | 09 Doctorate (PhD, EdD, DA, DBA, etc.) |
| 05 Medicine (MD, DO) | 10 Other, please specify: _____ |

12. In general, how well did your bachelor's degree prepare you for your additional degree program?

- 1 Very well 2 Well 3 Adequately 4 Inadequately 5 Poorly 6 Very poorly

III. Satisfaction

13. What is your present attitude towards the University?

- 1 Strongly Positive 2 Positive 3 Somewhat Positive 4 Somewhat Negative 5 Negative 6 Strongly Negative

14. What is your present attitude towards your bachelor's degree major?

- 1 Strongly Positive 2 Positive 3 Somewhat Positive 4 Somewhat Negative 5 Negative 6 Strongly Negative

IV. Educational Practices: *The questions below will provide feedback to help the University improve undergraduate education. Please respond to each question by evaluating your program as a whole.*

In my major degree program, --	Very Often	Often	Sometimes	Infrequently	Never
15. professors were accessible outside of class.	1	2	3	4	5
16. I was expected or required to work cooperatively with other students on projects, homework, and assignments.	1	2	3	4	5
17. professors encouraged me to challenge my own ideas, the ideas of other students, and those presented in readings and other course materials.	1	2	3	4	5
18. professors used appropriate teaching activities to help me learn.	1	2	3	4	5
19. professors' expectations for the quality of student work was high.	1	2	3	4	5
20. professors provided me with timely feedback on my performance.	1	2	3	4	5
21. professors encouraged students' questions and discussion in class.	1	2	3	4	5
22. I spent the necessary time and energy to come to class prepared.	1	2	3	4	5

V. Program Quality

23. How would you rate the quality of your major degree program concerning the:

- A. Number of courses offered in your major for you to complete your program in a reasonable amount of time.
 B. Classes being offered at convenient times.
 C. Classes being offered in a logical sequence.

Excellent	Good	Fair	Poor
1	2	3	4
1	2	3	4
1	2	3	4

24. How would you rate the quality of the faculty in your major degree program:

- 1 2 3 4

25. Were the academic standards in grading students by faculty in your degree program:

- 1 Too High 2 About Right 3 Too Low

VI. Educational Effectiveness

26. Listed below are some abilities often mentioned as important for personal and professional success in the 21st century. In your view, how effective were your University experiences in —

	Extremely Helpful	Very Helpful	Moderately Helpful	Slightly Helpful	Not Helpful
A. helping you to better develop your critical thinking ability?	1	2	3	4	5
B. helping you to better develop your sense of ethics?	1	2	3	4	5
C. contributing to a greater understanding of people with different backgrounds, habits, values, appearances, and abilities?	1	2	3	4	5
D. helping you to become a more active citizen?	1	2	3	4	5
E. improving the quality of your life aside from financial benefits?	1	2	3	4	5
F. helping you to better develop your reasoning skills?	1	2	3	4	5
G. helping you to better develop your capacity to view problems from different perspectives?	1	2	3	4	5
H. helping you to better develop your ability to solve problems?	1	2	3	4	5
I. helping you to better develop your ability to make informed decisions as a citizen?	1	2	3	4	5
J. helping you to better develop your writing skills?	1	2	3	4	5
K. helping you to better develop your oral communication skills?	1	2	3	4	5
L. helping you to better develop your knowledge of scientific and technological developments?	1	2	3	4	5

27. My SIUE undergraduate education broadened my interest in issues beyond the subjects in my major.

1 Strongly Agree 2 Agree 3 Neutral 4 Disagree 5 Strongly Disagree

28. How important has your college education been to your —

	Very Important	Moderately Important	Slightly Important	Not Important
A. Personal Life	1	2	3	4
B. Community Life	1	2	3	4
C. Professional Life	1	2	3	4

29. How would you rate the quality of education that you received from SIUE relative to the education that your friends and colleagues have received from other colleges or universities?

1 Among the Best 2 Above Average 3 Average 4 Below Average 5 Among the worst

30. Please indicate your involvement with each of the following since completing your bachelor's degree:

	Currently Involved	Have Been Involved	Never Involved
A. Organized, formal learning that is career-related (non-degree)	1	2	3
B. Personal enrichment studies	1	2	3
C. Professional activities or organizations	1	2	3
D. Volunteer work / community service activities or organizations	1	2	3
E. Social/recreational activities or organizations	1	2	3
F. Political activities or organizations	1	2	3
G. Religious/ethical activities or organizations	1	2	3
H. Support or participation in the Arts (<i>music, drama, dance, art</i>)	1	2	3
I. Reading books not directly related to your job	1	2	3