

Southern Illinois University at Edwardsville
Survey of 2005 Baccalaureate Graduates -- One Year Out

Survey Results for Schools

May 2007

Survey Administered By
The Office of Undergraduate Assessment and Program Review

Survey Results Compiled By
The Office of Institutional Research and Studies

Southern Illinois University at Edwardsville

Survey of 2005 Baccalaureate Graduates -- One Year Out

Contents

Introduction

Methodology

Survey Population and Respondents

- Charts: *2005 Baccalaureate Recipients, Profile*
- *Gender*
 - *Race/Ethnic*
 - *Age at Graduation*
 - *Matriculation Status*
 - *Time to Degree for New Freshmen*
 - *Time to Degree for New Transfers*

Table: *Comparison of All Graduates to Survey Respondents*

Survey Results

- Charts: *2005 Baccalaureate Graduates One Year Out, Satisfaction*
- *Present Attitude Toward the University*
 - *Present Attitude Towards Alumni's Bachelor's Degree Major*
 - *Quality of SIUE Education Relative to That of Friends at Other Schools*

- 2005 Baccalaureate Graduates One Year Out, Additional Education*
- *Enrolled Since Bachelors Degree*
 - *How Well Bachelor's Degree Prepared Alumni for Additional Degree*

- 2005 Baccalaureate Graduates One Year Out, Employment*
- *Employment Status*
 - *Place of Employment*
 - *Job in Field Related to Major?*
 - *Job Satisfaction*
 - *How Well Bachelor's Degree Program Prepared Alumni for Present Job*
 - *Mean Salary of Alumni Employed Full Time*

- Helpfulness of University Experiences in:*
- *Developing Critical Thinking Ability*
 - *Developing Sense of Ethics*
 - *Understanding People with Different Backgrounds*
 - *Becoming a more Active Citizen*
 - *Improving Quality of Life (aside from financial benefits)*
 - *Developing Reasoning Skills*
 - *Viewing Problems from Different Perspectives*
 - *Developing Ability to Solve Problems*
 - *Making Informed Decisions as a Citizen*
 - *Developing Writing Skills*

- *Developing Oral Communication Skills*
- *Developing Knowledge of Scientific and Technological Developments*

Tables:

<i>Part I</i>	<i>Employment Questions</i>
<i>Part II</i>	<i>Education Questions</i>
<i>Part III</i>	<i>Satisfaction Questions</i>
<i>Part IV</i>	<i>Educational Practices Questions</i>
<i>Part V</i>	<i>Program Quality Questions</i>
<i>Part VI</i>	<i>Educational Effectiveness Questions</i>

Questionnaire

Southern Illinois University Edwardsville Survey of 2005 Baccalaureate Graduates -- One Year Out

Introduction

This one-year out baccalaureate survey was done to provide data for the University's undergraduate program reviews and other planning uses, and to participate in the Illinois Board of Higher Education Baccalaureate Graduates' Follow-up System.

IBHE Survey Schedule and Population Definition		
Survey Year	Survey Type	Survey Group
1992	One-Year Out Survey	Class of '91
1993	Five-Year Out Survey	Class of '88
1994	Ten-Year Out Survey	Class of '84
1995	One-Year Out Survey	Class of '94
1996	Five-Year Out Survey	Class of '91
1997	Nine-Year Out Survey	Class of '88
1998	One-Year Out Survey	Class of '97
1999	Five-Year Out Survey	Class of '94
2000	Nine-Year Out Survey	Class of '91
2001	One-Year Out Survey	Class of '00
2002	Five-Year Out Survey	Class of '97
2003	Nine-Year Out Survey	Class of '94
2004	One-Year Out Survey	Class of '03
2005	Five-Year Out Survey	Class of '00
2006	Nine-Year Out Survey	Class of '97
2007	One-Year Out Survey	Class of '06
2008	Five-Year Out Survey	Class of '03
2009	Nine-Year Out Survey	Class of '00

After the first six years, the surveys were reviewed and changed, modifying some questions and value scales, and adding some additional questions.

The current survey was administered during the spring and summer of 2006 to calendar year 2005 baccalaureate graduates of SIUE. The questionnaire includes 18 questions common to all Illinois public universities. These are the first 18 questions in the survey, forming Parts I, II, III, and the beginning of Part IV (Employment Questions, Education Questions, Satisfaction Questions, and Educational Practices Questions). SIUE added to these one question on industry of employment and three additional questions on educational practices, and appended two additional parts to the survey to add questions about program quality, and educational effectiveness. (A questionnaire is included in Appendix A.)

Methodology

The survey questionnaire and a cover letter were adapted from the questionnaire and letter

developed for previous surveys. SIUE Alumni Services provided current addresses for calendar year 2005 graduates as determined from institutional records. The survey was distributed in May 2006 to May 2005 baccalaureate graduates and in August 2006 to August 2005 and December 2005 baccalaureate graduates. Each envelope included a cover letter, a questionnaire, and a postage-paid, pre-addressed return envelope. Each questionnaire was stamped with a sequential, identifying number which was also stamped on a listing of the graduates (this aided in identifying the surveys when returned).

On April 17, 2005 approximately two weeks before the first set of surveys were to be mailed, a postcard was sent to the 1,006 May 2005 baccalaureate graduates for whom addresses were available, notifying the alumni that they would be receiving a questionnaire and encouraging them to complete and return the survey. Surveys were mailed first class on May 1, 2006. On May 16st, approximately three weeks after the survey was mailed and when the rate of survey returns had decreased, a follow-up postcard requesting that the survey be returned was mailed to each student who had not returned his or her survey. On May 30th a second wave mailing of the surveys was sent to the 728 remaining non-respondents.

The second distribution began with the preliminary postcard mailed on August 9, 2006 to the 877 August and December 2005 baccalaureate graduates with known addresses. Surveys were mailed first class to this group on August 21, 2006 with a follow-up post card mailed to non-responders on September 13, 2006. A second wave mailing of the survey was sent to 678 non-responders on September 27, 2006.

Returned surveys began arriving on April 28th and continued through the summer and fall, with a few arriving as late as January 2007. As the surveys came in, each was matched with the corresponding stamped listing. The students' names were then checked against the alphabetic list of alumni to verify (or, if the alumnus chose not to provide the identification number, to obtain) the student identification number. The student identification number was the key which allowed merging of survey data with administrative records (e.g., biographic, graduation, matriculation, and enrollment information).

Southern Illinois University Edwardsville
Survey of 2005 Baccalaureate Graduates -- One Year Out

Survey Population and Respondents

	Number of Graduates
2005 Baccalaureate Degrees	1,929
Less persons who received 2 baccalaureate degrees	13
2005 Baccalaureate Graduates	1,916
Less Graduates with No Address Available *	34
Graduates Surveyed	1,882
Less Non-Deliverable Surveys	236
Less Non-Responding Graduates	1,022
Survey Respondents	624
Gross Response Rate (Respondents/Total Surveyed)	33.16%
Adjusted Response Rate (Respondents/Delivered Surveys)	37.91%

* Includes deceased alumni, foreign addresses and known bad addresses.

Southern Illinois University Edwardsville
Survey of 2005 Baccalaureate Graduates -- One Year Out

Comparison of All Graduates to Survey Respondents

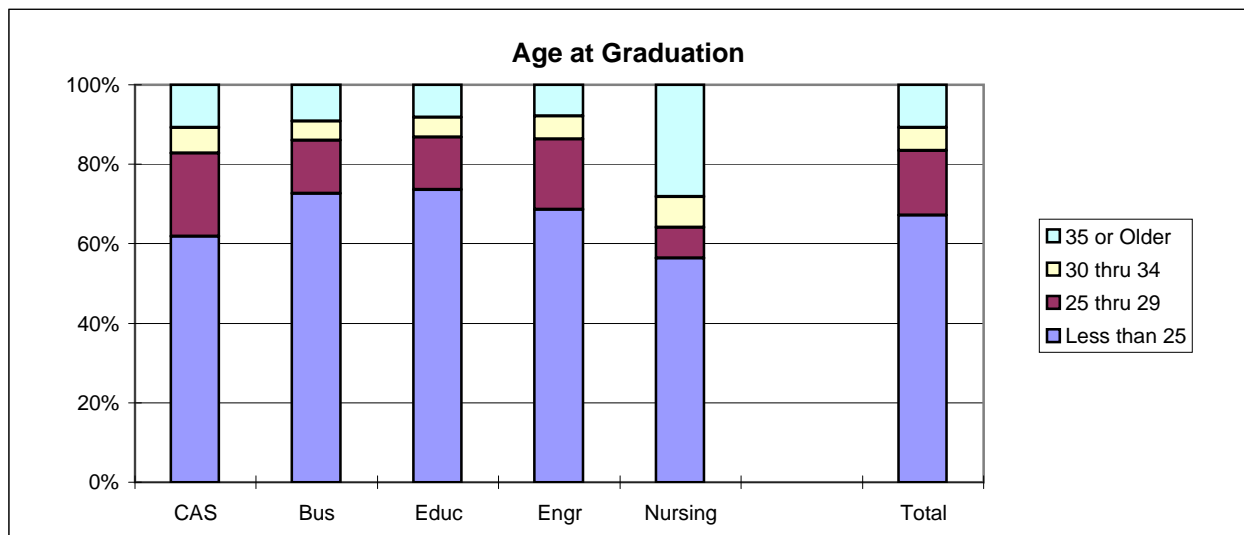
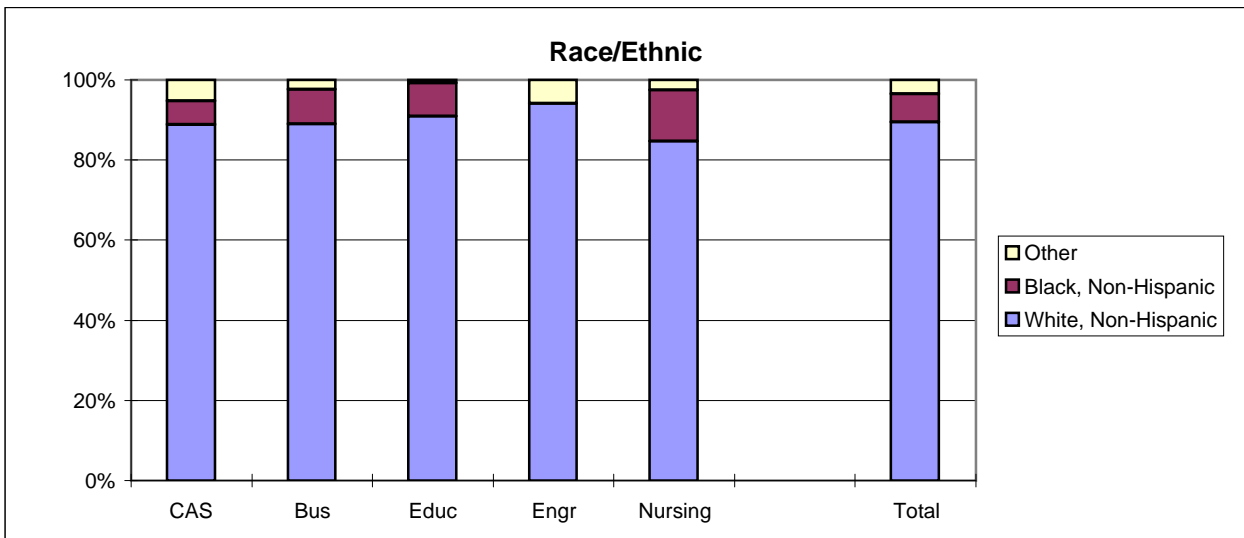
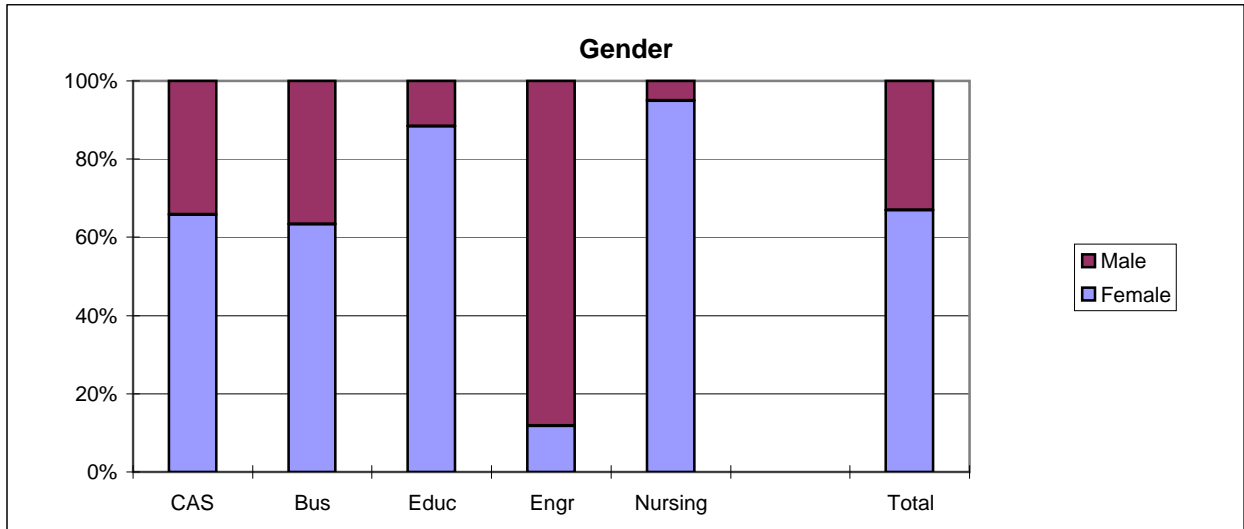
School Detail	All Graduates					
	CAS	Bus	Educ	Engr	Nursing	Total
Total	760	457	404	191	104	1916
Female	59.2%	54.5%	80.0%	12.0%	89.4%	59.4%
Male	40.8%	45.5%	20.0%	88.0%	10.6%	40.6%
Missing Data	0.0%	0.0%	0.0%	0.0%	0.0%	0.0%
White, Non-Hispanic	85.5%	83.2%	91.8%	88.5%	76.9%	86.1%
Black, Non-Hispanic	9.1%	10.1%	6.7%	3.1%	14.4%	8.5%
Asian/Pacific Islander	1.6%	2.4%	0.7%	2.6%	5.8%	1.9%
American Indian/Alaskan Native	0.9%	0.4%	0.0%	0.0%	0.0%	0.5%
Hispanic	2.1%	0.9%	0.7%	2.6%	1.9%	1.6%
Non-Resident Alien	0.8%	3.1%	0.0%	3.1%	1.0%	1.4%
Missing Data	0.0%	0.0%	0.0%	0.0%	0.0%	0.0%
Age at Graduation	range	range	range	range	range	range
	20 to 61	21 to 58	20 to 61	21 to 51	22 to 53	20 to 61
	median	median	median	median	median	median
	23.1	22.7	22.9	23.1	23.6	22.9
Bachelor of Science	60.7%	86.2%	93.6%	97.9%	100.0%	79.5%
Bachelor of Music	1.6%	0.0%	0.0%	0.0%	0.0%	0.6%
Bachelor of Arts	25.5%	0.0%	6.4%	2.1%	0.0%	11.7%
Bachelor of Fine Arts	1.4%	0.0%	0.0%	0.0%	0.0%	0.6%
Bachelor of Sci in Accountancy	0.0%	13.8%	0.0%	0.0%	0.0%	3.3%
Bachelor of Liberal Studies	10.8%	0.0%	0.0%	0.0%	0.0%	4.3%
Missing Data	0.0%	0.0%	0.0%	0.0%	0.0%	0.0%
Graduated Spring 2005	49.2%	50.3%	67.3%	53.4%	43.3%	53.4%
Graduated Summer 2005	21.6%	16.8%	8.2%	16.8%	6.7%	16.3%
Graduated Fall 2005	29.2%	32.8%	24.5%	29.8%	50.0%	30.3%
Missing Data	0.0%	0.0%	0.0%	0.0%	0.0%	0.0%
Matriculated as a New Freshman	43.0%	46.2%	41.8%	45.5%	39.4%	43.6%
Matriculated as a Transfer	55.7%	53.8%	58.2%	50.3%	59.6%	55.4%
Matriculated as a Non-Degree Student	1.3%	0.0%	0.0%	4.2%	1.0%	1.0%
Missing Data	0.0%	0.0%	0.0%	0.0%	0.0%	0.0%
Time to Degree for New Freshmen						
3 Years or Fewer	0.3%	0.5%	0.6%	0.0%	0.0%	0.4%
4 Years	38.5%	42.2%	42.0%	37.9%	41.5%	40.2%
5 Years	27.8%	31.8%	39.6%	39.1%	31.7%	32.6%
6 Years	16.5%	14.2%	10.7%	16.1%	14.6%	14.6%
7 Years	5.8%	4.7%	3.6%	2.3%	7.3%	4.8%
8 Years	1.8%	2.4%	0.6%	1.1%	2.4%	1.7%
9 Years	1.2%	1.4%	0.0%	0.0%	0.0%	0.8%
10 Years	0.0%	0.9%	0.0%	1.1%	2.4%	0.5%
11 Years or More	8.0%	1.9%	3.0%	2.3%	0.0%	4.4%
Missing Data	0.0%	0.0%	0.0%	0.0%	0.0%	0.0%
Time to Degree for Transfers						
2 or Fewer Years	21.3%	22.4%	22.1%	13.5%	19.4%	20.9%
3 Years	35.9%	33.3%	44.7%	39.6%	40.3%	37.9%
4 Years	20.8%	21.1%	15.7%	24.0%	21.0%	20.1%
5 Years	8.7%	7.3%	6.8%	11.5%	8.1%	8.2%
6 Years	4.5%	6.1%	2.6%	4.2%	6.5%	4.5%
7 Years	2.1%	0.4%	1.7%	1.0%	0.0%	1.4%
8 Years	0.9%	0.4%	0.4%	1.0%	0.0%	0.7%
9 Years	0.7%	0.4%	1.7%	2.1%	1.6%	1.0%
10 Years or More	5.0%	8.5%	4.3%	3.1%	3.2%	5.4%
Missing Data	0.0%	0.0%	0.0%	0.0%	0.0%	0.0%
Graduating GPA (4 point scale)	Mean	Mean	Mean	Mean	Mean	Mean
	3.142	2.983	3.391	3.022	3.333	3.155
	Std Dev	Std Dev	Std Dev	Std Dev	Std Dev	Std Dev
	0.499	0.447	0.413	0.469	0.366	0.483

Southern Illinois University Edwardsville
Survey of 2005 Baccalaureate Graduates -- One Year Out

Comparison of All Graduates to Survey Respondents, con't.

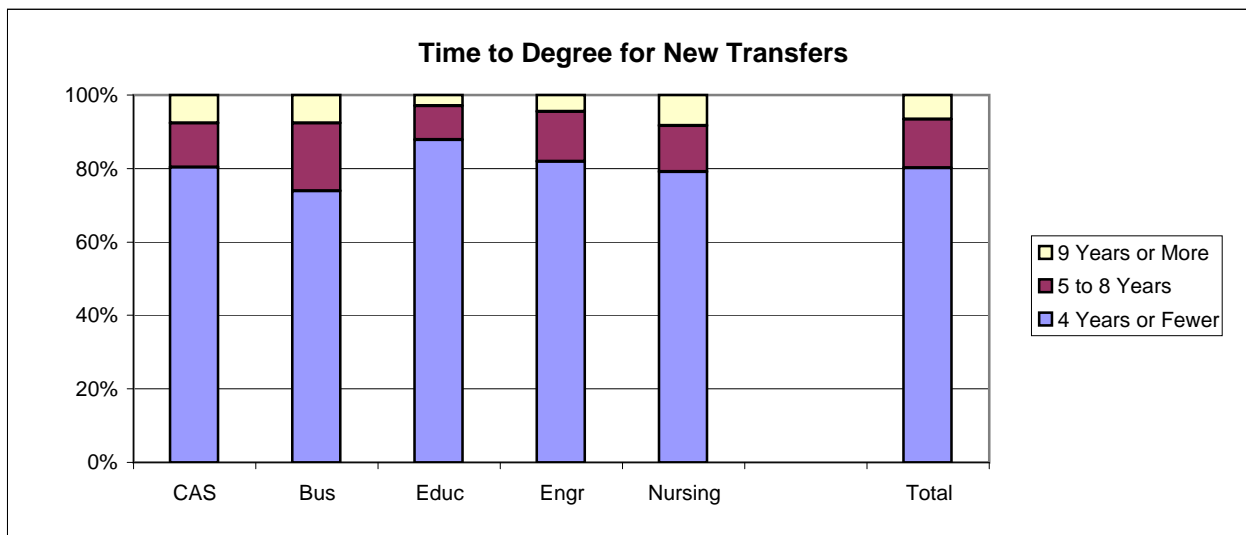
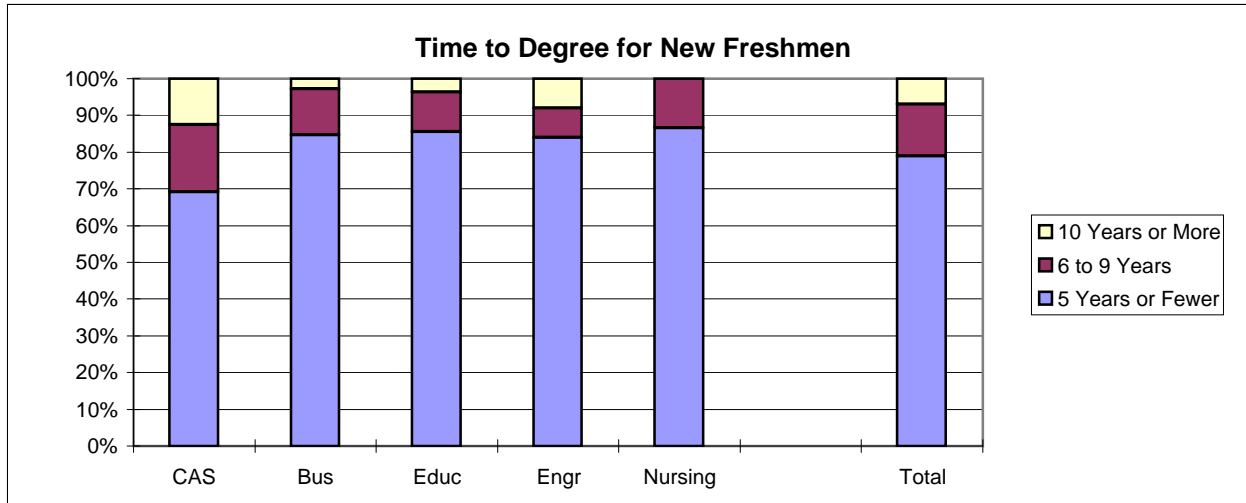
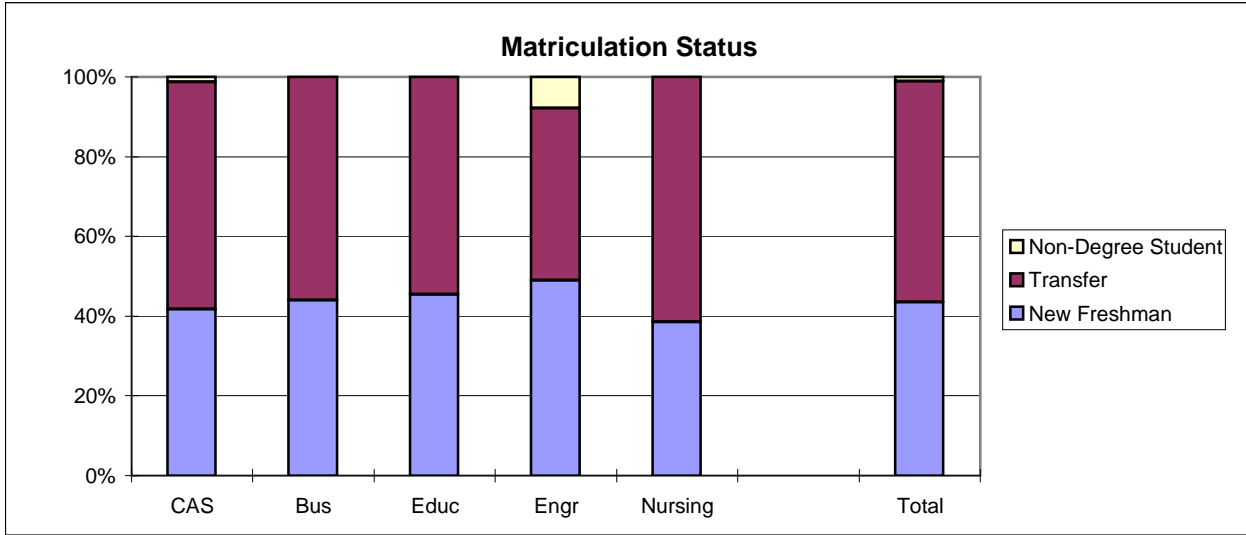
School Detail	All One Year Out Survey Respondents						
	CAS	Bus	Educ	Engr	Nursing	Total	
Total	249	164	121	51	39	624	
Female	65.9%	63.4%	88.4%	11.8%	94.9%	67.0%	
Male	34.1%	36.6%	11.6%	88.2%	5.1%	33.0%	
Missing Data	0.0%	0.0%	0.0%	0.0%	0.0%	0.0%	
White, Non-Hispanic	88.8%	89.0%	90.9%	94.1%	84.6%	89.4%	
Black, Non-Hispanic	6.0%	8.5%	8.3%	0.0%	12.8%	7.1%	
Asian/Pacific Islander	1.2%	1.2%	0.8%	2.0%	2.6%	1.3%	
American Indian/Alaskan Native	0.4%	0.0%	0.0%	0.0%	0.0%	0.2%	
Hispanic	3.2%	0.6%	0.0%	3.9%	0.0%	1.8%	
Non-Resident Alien	0.4%	0.6%	0.0%	0.0%	0.0%	0.3%	
Missing Data	0.0%	0.0%	0.0%	0.0%	0.0%	0.0%	
Age at Graduation	range	20 to 59	21 to 58	21 to 55	21 to 46	22 to 53	20 to 59
	median	22.93	22.6	22.66	22.9	23.17	22.76
Bachelor of Science	61.4%	81.7%	91.7%	98.0%	100.0%	78.0%	
Bachelor of Music	0.4%	0.0%	0.0%	0.0%	0.0%	0.2%	
Bachelor of Arts	25.3%	0.0%	8.3%	2.0%	0.0%	11.9%	
Bachelor of Fine Arts	1.2%	0.0%	0.0%	0.0%	0.0%	0.5%	
Bachelor of Sci in Accountancy	0.0%	18.3%	0.0%	0.0%	0.0%	4.8%	
Bachelor of Liberal Studies	11.6%	0.0%	0.0%	0.0%	0.0%	4.6%	
Missing Data	0.0%	0.0%	0.0%	0.0%	0.0%	0.0%	
Graduated Spring 2005	53.8%	50.0%	62.8%	68.6%	46.2%	55.3%	
Graduated Summer 2005	14.9%	20.7%	9.1%	11.8%	2.6%	14.3%	
Graduated Fall 2005	31.3%	29.3%	28.1%	19.6%	51.3%	30.4%	
Missing Data	0.0%	0.0%	0.0%	0.0%	0.0%	0.0%	
Matriculated as a New Freshman	41.8%	43.9%	45.5%	49.0%	38.5%	43.4%	
Matriculated as a Transfer	57.0%	56.1%	54.5%	43.1%	61.5%	55.4%	
Matriculated as a Non-Degree Student	1.2%	0.0%	0.0%	7.8%	0.0%	1.1%	
Missing Data	0.0%	0.0%	0.0%	0.0%	0.0%	0.0%	
Time to Degree for New Freshmen							
3 Years or Fewer	0.0%	0.0%	0.0%	0.0%	0.0%	0.0%	
4 Years	43.3%	51.4%	43.6%	48.0%	33.3%	45.4%	
5 Years	26.0%	33.3%	41.8%	36.0%	53.3%	33.6%	
6 Years	14.4%	6.9%	9.1%	4.0%	13.3%	10.3%	
7 Years	2.9%	2.8%	1.8%	0.0%	0.0%	2.2%	
8 Years	1.0%	1.4%	0.0%	4.0%	0.0%	1.1%	
9 Years	0.0%	1.4%	0.0%	0.0%	0.0%	0.4%	
10 Years	0.0%	0.0%	0.0%	4.0%	0.0%	0.4%	
11 Years or More	12.5%	2.8%	3.6%	4.0%	0.0%	6.6%	
Missing Data	0.0%	0.0%	0.0%	0.0%	0.0%	0.0%	
Time to Degree for Transfers							
2 or Fewer Years	20.4%	29.3%	25.8%	13.6%	20.8%	23.4%	
3 Years	40.8%	22.8%	45.5%	18.2%	45.8%	35.8%	
4 Years	19.0%	21.7%	16.7%	50.0%	12.5%	20.8%	
5 Years	7.7%	6.5%	4.5%	9.1%	8.3%	6.9%	
6 Years	3.5%	10.9%	1.5%	0.0%	4.2%	4.9%	
7 Years	0.7%	0.0%	1.5%	4.5%	0.0%	0.9%	
8 Years	0.0%	1.1%	1.5%	0.0%	0.0%	0.6%	
9 Years	0.0%	0.0%	0.0%	0.0%	4.2%	0.3%	
10 Years or More	7.7%	7.6%	3.0%	4.5%	4.2%	6.4%	
Missing Data	0.0%	0.0%	0.0%	0.0%	0.0%	0.0%	
Graduating GPA (4 point scale)	Mean	3.235	3.057	3.379	3.007	3.409	3.208
	Std Dev	0.477	0.440	0.443	0.475	0.333	0.471

2005 Baccalaureate Recipients Profile



2005 Baccalaureate Recipients

Profile, con't.



Southern Illinois University Edwardsville
Survey of 2005 Baccalaureate Graduates -- One Year Out
Survey Responses -- Part I
Employment Questions

School Detail	CAS	Bus	Educ	Engr	Nursing	Total
Number of Survey Respondents *	249	164	121	51	39	624
1. Number Employed:						
Full-time	67.3%	85.8%	66.9%	88.2%	79.5%	74.6%
Part-time	19.0%	8.6%	13.2%	7.8%	17.9%	14.2%
Not, but Seeking	6.0%	3.1%	5.8%	0.0%	2.6%	4.5%
Not, not Seeking	7.7%	2.5%	14.0%	3.9%	0.0%	6.8%
Number Responding	248	162	121	51	39	621
The remaining questions in Part I were to be answered only by respondents who were employed full-time or part-time.						
	214	153	97	49	38	551
2. Place of Employment						
Illinois	58.5%	55.6%	74.2%	43.8%	62.9%	59.5%
Missouri	33.2%	38.9%	17.2%	37.5%	28.6%	32.0%
Other	8.3%	5.6%	8.6%	18.8%	8.6%	8.6%
Number Responding	193	144	93	48	35	513
3. Classification of Primary Employer						
Self-Employed or Private Practice	4.2%	3.9%	2.1%	4.1%	0.0%	3.5%
Business (Industrial, Commercial or Service)	41.3%	60.5%	22.9%	49.0%	0.0%	41.2%
Professional Firm (e.g., Engineering, Law)	4.2%	11.8%	1.0%	32.7%	0.0%	8.0%
College or University	6.1%	3.3%	4.2%	4.1%	2.6%	4.6%
Elementary/Secondary School	13.6%	0.0%	44.8%	0.0%	5.3%	13.5%
Health Agency (e.g. Hospital, Clinic)	6.6%	5.3%	8.3%	0.0%	89.5%	11.7%
Federal, State, or Local Government	8.5%	7.9%	4.2%	10.2%	2.6%	7.3%
Armed Services	0.9%	0.0%	1.0%	0.0%	0.0%	0.5%
NonProfit (Non-Government)	7.5%	5.9%	6.3%	0.0%	0.0%	5.7%
Other	7.0%	1.3%	5.2%	0.0%	0.0%	4.0%
Number Responding	213	152	96	49	38	548
4. Job Satisfaction						
Very Satisfied	27.2%	21.6%	29.9%	44.9%	34.2%	28.2%
Satisfied	30.0%	40.5%	34.0%	44.9%	36.8%	35.5%
Somewhat Satisfied	25.4%	28.8%	24.7%	4.1%	26.3%	24.4%
Somewhat Dissatisfied	7.0%	3.3%	5.2%	4.1%	0.0%	4.9%
Dissatisfied	6.1%	2.0%	6.2%	2.0%	0.0%	4.2%
Very Dissatisfied	4.2%	3.9%	0.0%	0.0%	2.6%	2.9%
Number Responding	213	153	97	49	38	550
5. Job in Field?						
Closely Related	29.4%	39.2%	55.7%	69.4%	73.7%	43.4%
Related	28.5%	34.6%	21.6%	20.4%	26.3%	28.1%
Unrelated (choice unknown)	0.9%	3.3%	1.0%	0.0%	0.0%	1.5%
Unrelated (by choice)	15.4%	6.5%	8.2%	2.0%	0.0%	9.4%
Unrelated (not by choice)	25.7%	16.3%	13.4%	8.2%	0.0%	17.6%
Number Responding	214	153	97	49	38	551
6. Timing of Securing First Job After Degree						
Held the Same Job While Enrolled	26.9%	29.4%	12.4%	26.5%	47.4%	26.4%
Secured Job by Graduation	14.2%	20.9%	26.8%	42.9%	31.6%	22.0%
Secured Job After Graduation (timing unknown)	0.0%	0.0%	0.0%	0.0%	0.0%	0.0%
Less than 1 Month After Graduation	7.1%	3.3%	6.2%	10.2%	5.3%	6.0%
1 to 3 Months After Graduation	14.2%	15.0%	27.8%	4.1%	2.6%	15.1%
3 to 6 Months After Graduation	24.1%	15.0%	15.5%	8.2%	10.5%	17.7%
6 to 9 Months After Graduation	9.9%	11.8%	8.2%	8.2%	2.6%	9.5%
More than 9 Months After Graduation	3.8%	4.6%	3.1%	0.0%	0.0%	3.3%
Number Responding	212	153	97	49	38	549

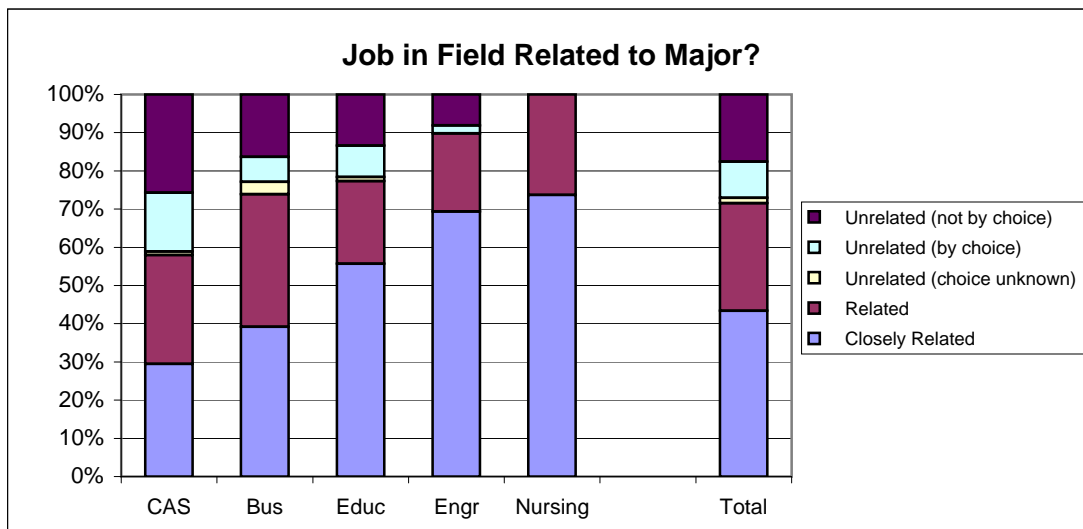
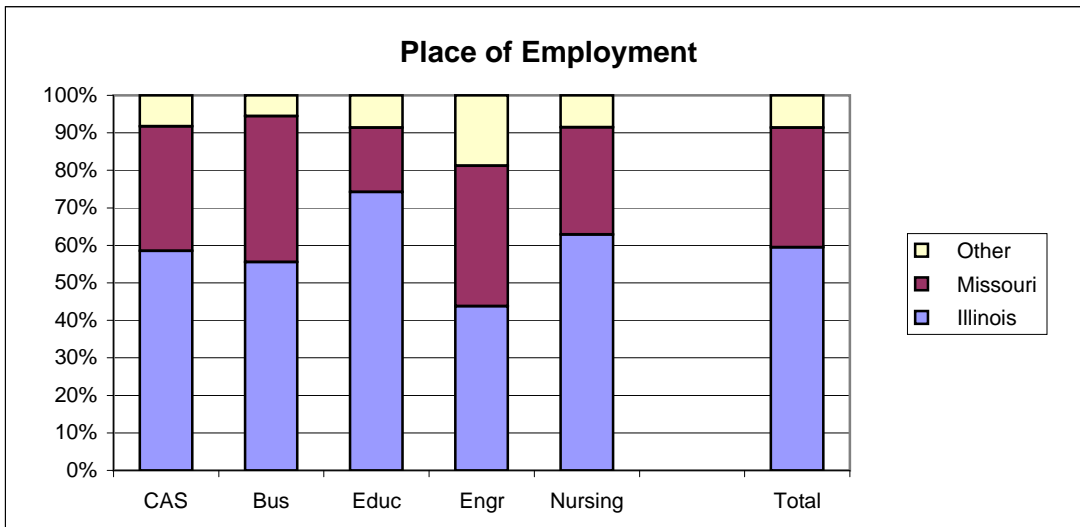
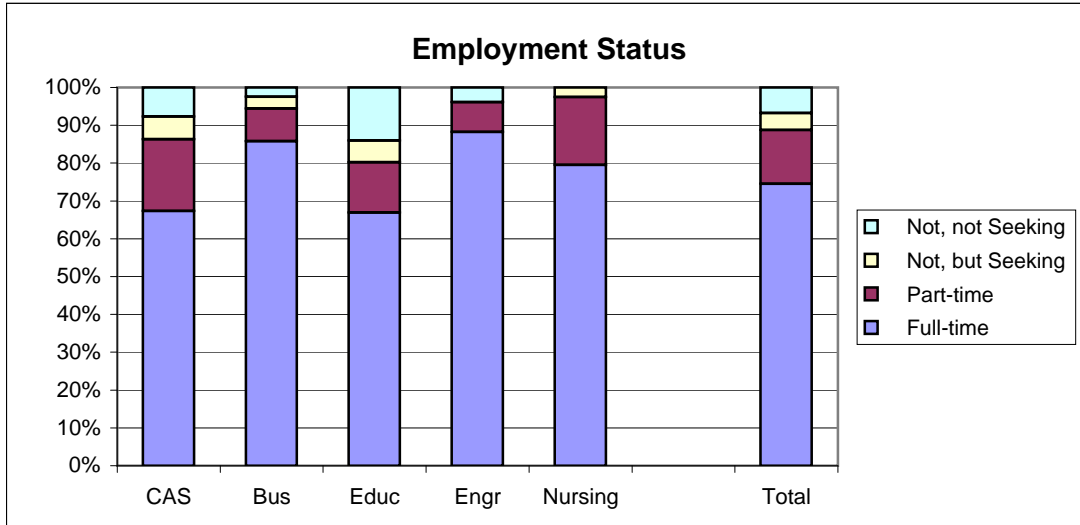
Southern Illinois University Edwardsville
Survey of 2005 Baccalaureate Graduates -- One Year Out
Survey Responses -- Part I
Employment Questions

School Detail, cont.	CAS	Bus	Educ	Engr	Nursing	Total
7. Annual Earned Income in Current Job Before Taxes						
Employed Full-Time						
Less Than \$15,000	10.3%	1.5%	4.0%	0.0%	0.0%	4.8%
\$15,000 to 19,999	5.8%	1.5%	6.7%	2.3%	0.0%	3.9%
\$20,000 to \$24,999	17.3%	7.4%	22.7%	0.0%	6.9%	12.8%
\$25,000 to \$29,999	23.1%	16.3%	18.7%	0.0%	6.9%	16.9%
\$30,000 to \$34,999	18.6%	28.1%	33.3%	0.0%	13.8%	21.9%
\$35,000 to \$39,999	10.3%	17.8%	13.3%	9.3%	24.1%	13.9%
\$40,000 or More	14.7%	27.4%	1.3%	88.4%	48.3%	25.8%
Number Responding	156	135	75	43	29	438
Mean Salary	\$28,845	\$35,220	\$27,512	\$45,815	\$41,278	\$33,070
Employed Part-Time						
Less Than \$5,000	6.7%	0.0%	0.0%	DW	0.0%	3.3%
5,000 to \$9,999	20.0%	50.0%	27.3%	DW	0.0%	21.7%
\$10,000 to \$14,999	40.0%	12.5%	18.2%	DW	14.3%	31.7%
\$15,000 to \$19,999	6.7%	25.0%	27.3%	DW	14.3%	13.3%
\$20,000 or More	26.7%	12.5%	27.3%	DW	71.4%	30.0%
Number Responding	30	8	11	4	7	60
Mean Salary	\$14,476	\$11,997	\$15,698	\$21,000	\$26,143	\$11,677
8. Bachelor's Degree Preparation for Job						
Very Well	13.9%	11.4%	21.9%	28.6%	26.3%	16.9%
Well	27.4%	34.2%	32.3%	38.8%	34.2%	31.7%
Adequately	39.4%	41.6%	37.5%	22.4%	34.2%	37.8%
Inadequately	10.1%	9.4%	2.1%	4.1%	2.6%	7.4%
Poorly	4.3%	2.0%	4.2%	4.1%	2.6%	3.5%
Very Poorly	4.8%	1.3%	2.1%	2.0%	0.0%	2.8%
Number Responding	208	149	96	49	38	540
9a. Primary Occupation						
Management	9.2%	16.9%	4.3%	10.2%	2.6%	10.1%
Business Operations	2.6%	14.8%	2.2%	4.1%	0.0%	5.8%
Financial Specialists	1.5%	27.5%	1.1%	0.0%	0.0%	8.3%
Computer Specialists	1.5%	9.2%	0.0%	16.3%	0.0%	4.6%
Mathematical Scientists and Technicians	0.5%	0.0%	0.0%	0.0%	0.0%	0.2%
Architects, Surveyors, and Cartographers	0.0%	0.0%	0.0%	2.0%	0.0%	0.2%
Engineers and Related Technicians	0.0%	0.0%	0.0%	61.2%	0.0%	5.8%
Life & Physical Scientists, and Technicians	6.2%	0.0%	1.1%	0.0%	0.0%	2.5%
Social Scientists	1.5%	0.0%	1.1%	0.0%	0.0%	0.8%
Health: Doctors	0.0%	0.7%	0.0%	0.0%	0.0%	0.2%
Health: Registered Nurses	0.0%	0.0%	0.0%	0.0%	94.7%	7.0%
Health: Therapists	1.5%	0.7%	3.2%	0.0%	0.0%	1.4%
Health: Oth Practitnrs, Prof.s, & Suppt Wkrs	5.6%	1.4%	6.5%	0.0%	0.0%	3.7%
Community & Social Service	9.7%	1.4%	11.8%	0.0%	0.0%	6.2%
Legal: Attorneys/Judges	0.0%	0.0%	1.1%	0.0%	0.0%	0.2%
Legal: Legal Support Workers	2.6%	1.4%	0.0%	0.0%	0.0%	1.4%
Education: Early Childhood Teachers	2.1%	0.0%	7.5%	0.0%	0.0%	2.1%
Education: Elementary School Teachers	3.6%	0.0%	19.4%	0.0%	0.0%	4.8%
Education: Middle School Teachers	2.1%	0.0%	8.6%	0.0%	0.0%	2.3%
Education: Secondary School Teachers	4.6%	0.0%	2.2%	0.0%	0.0%	2.1%
Education: Special Education Teachers	0.0%	0.0%	6.5%	0.0%	0.0%	1.2%
Education: Other, except Administrators	7.2%	0.7%	6.5%	0.0%	2.6%	4.3%
continued						

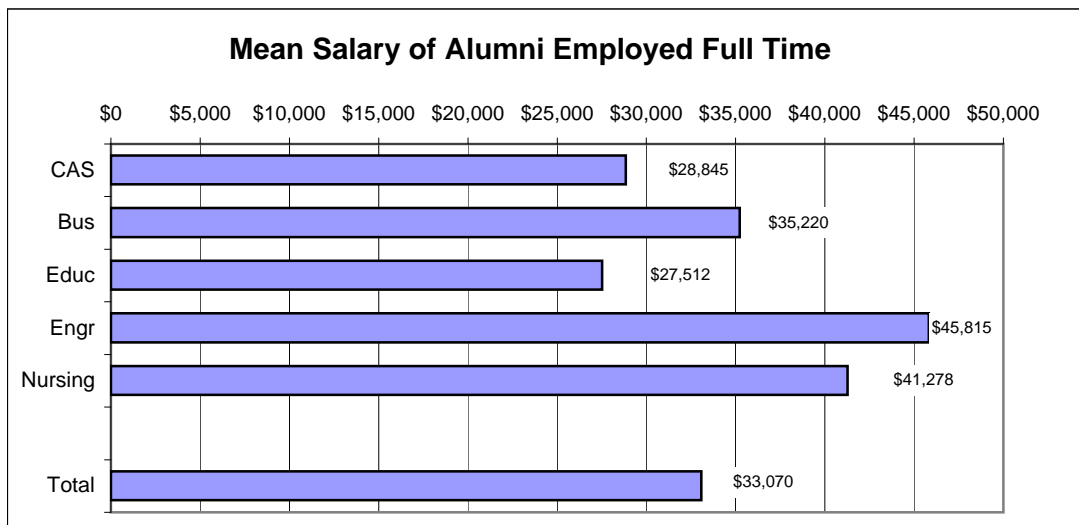
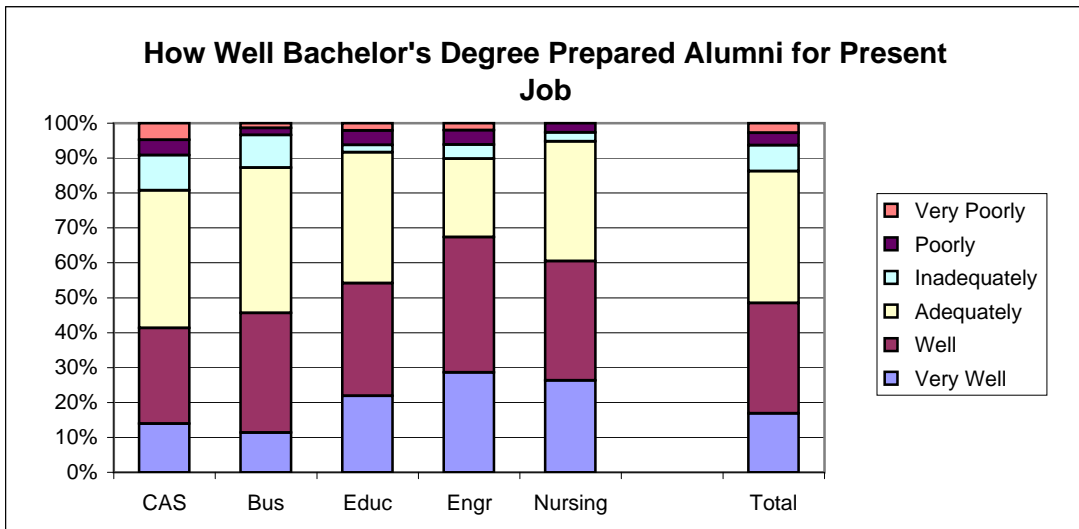
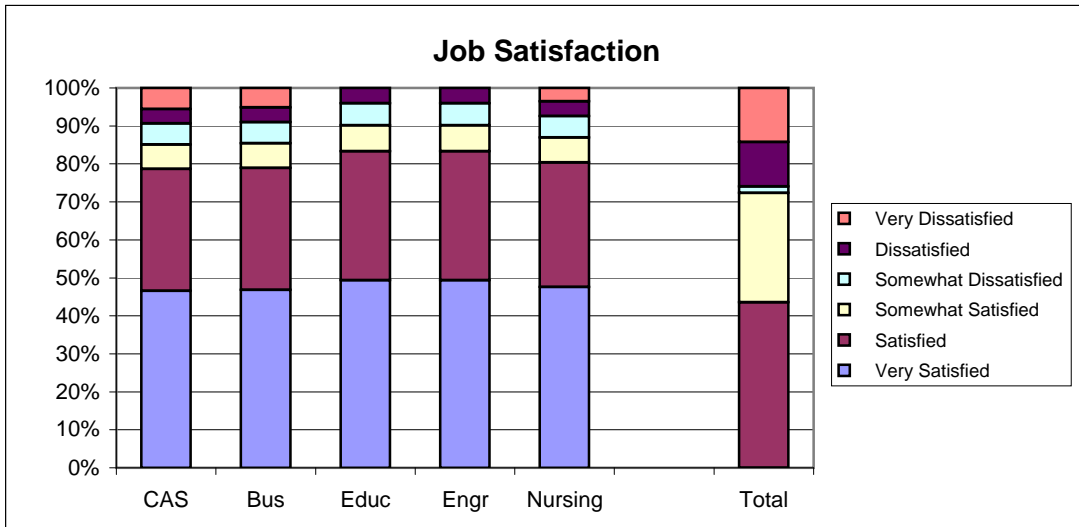
Southern Illinois University Edwardsville
Survey of 2005 Baccalaureate Graduates -- One Year Out
Survey Responses -- Part I
Employment Questions

School Detail, cont.	CAS	Bus	Educ	Engr	Nursing	Total
9a. continuation of Primary Occupation						
Library Occupations	0.5%	0.0%	0.0%	0.0%	0.0%	0.2%
Art and Design Workers	4.1%	0.0%	0.0%	0.0%	0.0%	1.5%
Entertainment, Performers, Sports & Related	0.5%	0.0%	0.0%	0.0%	0.0%	0.2%
Media and Communication Workers	3.1%	0.7%	0.0%	0.0%	0.0%	1.4%
Sales	9.2%	11.3%	4.3%	2.0%	0.0%	7.5%
Office & Administration	8.2%	9.9%	6.5%	0.0%	0.0%	7.0%
Protective Services	2.6%	0.0%	0.0%	2.0%	0.0%	1.2%
Food Preparation & Serving	2.6%	0.7%	2.2%	0.0%	0.0%	1.5%
Buildings & Grounds Maintenance	0.5%	0.0%	1.1%	0.0%	0.0%	0.4%
Personal Care and Service	2.6%	0.0%	2.2%	0.0%	0.0%	1.4%
Farming, Fishing, and Forestry	0.0%	0.0%	0.0%	0.0%	0.0%	0.0%
Construction & Extractive	1.0%	1.4%	0.0%	2.0%	0.0%	1.0%
Installation, Maintenance, & Repair	0.5%	0.0%	0.0%	0.0%	0.0%	0.2%
Production	2.1%	0.7%	0.0%	0.0%	0.0%	1.0%
Transportation and Material Moving	0.0%	0.7%	0.0%	0.0%	0.0%	0.2%
Military	0.5%	0.0%	1.1%	0.0%	0.0%	0.4%
Number Responding	195	142	93	49	38	517
9b. Industry						
Agriculture, Forestry, and Fishing	0.6%	0.0%	0.0%	2.5%	0.0%	0.5%
Mining	0.0%	0.8%	0.0%	0.0%	0.0%	0.2%
Utilities	0.6%	0.8%	0.0%	5.0%	0.0%	0.9%
Construction	1.3%	6.2%	3.1%	42.5%	0.0%	6.9%
Manufacturing	1.9%	6.2%	1.5%	5.0%	0.0%	3.3%
Wholesale Trade	1.3%	3.1%	0.0%	0.0%	0.0%	1.4%
Retail Trade	16.0%	7.7%	7.7%	10.0%	0.0%	10.4%
Transportation	1.3%	5.4%	0.0%	2.5%	0.0%	2.4%
Information	1.9%	0.8%	0.0%	5.0%	0.0%	1.4%
Finance & Insurance	3.2%	23.8%	1.5%	5.0%	0.0%	9.2%
Real Estate & Rental & Leasing	1.3%	3.1%	1.5%	0.0%	0.0%	1.7%
Professional, Scientific & Technical Services	9.0%	8.5%	1.5%	17.5%	0.0%	7.8%
Management of Companies & Enterprises	2.6%	4.6%	0.0%	0.0%	0.0%	2.4%
Admin & Suppt, Waste Mgmt & Remedtn Svcs	0.6%	0.8%	0.0%	2.5%	0.0%	0.7%
Educational Services	20.5%	3.1%	50.8%	0.0%	15.6%	17.5%
Health Care & Social Assistance	12.8%	9.2%	18.5%	0.0%	84.4%	16.8%
Arts, Entertainment & Recreation	7.7%	2.3%	4.6%	2.5%	0.0%	4.5%
Accommodations & Food Services	3.2%	0.8%	1.5%	0.0%	0.0%	1.7%
Other Services (except Public Admin)	12.2%	8.5%	6.2%	0.0%	0.0%	8.0%
Public Administration	1.9%	4.6%	1.5%	0.0%	0.0%	2.4%
Number Responding	156	130	65	40	32	423

2005 Baccalaureate Graduates One Year Out Employment



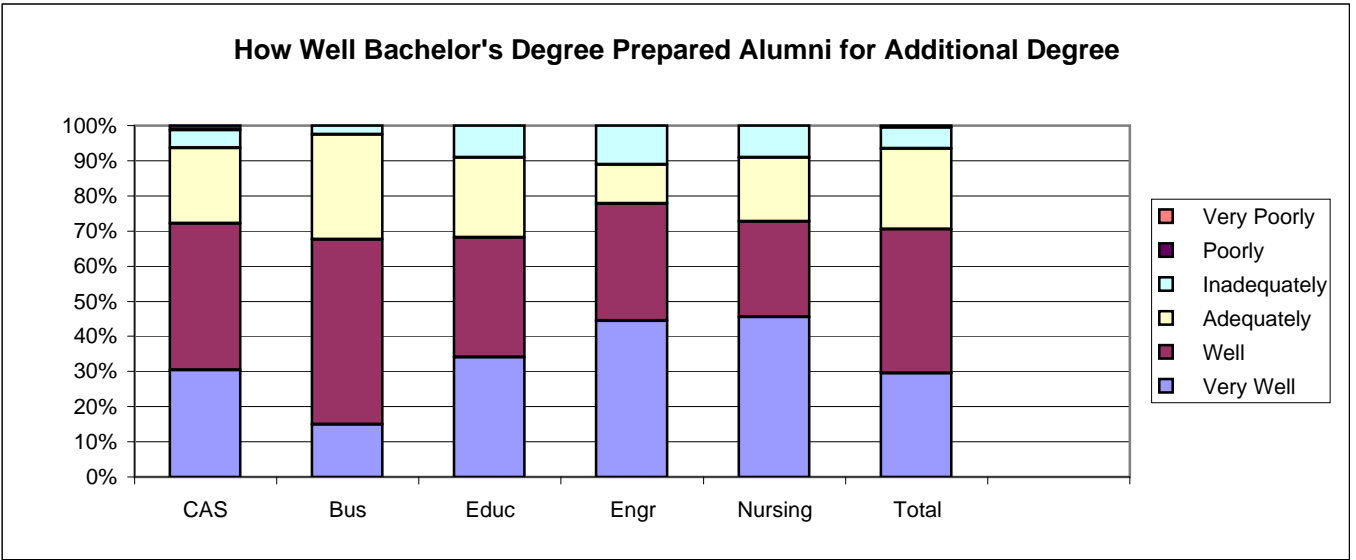
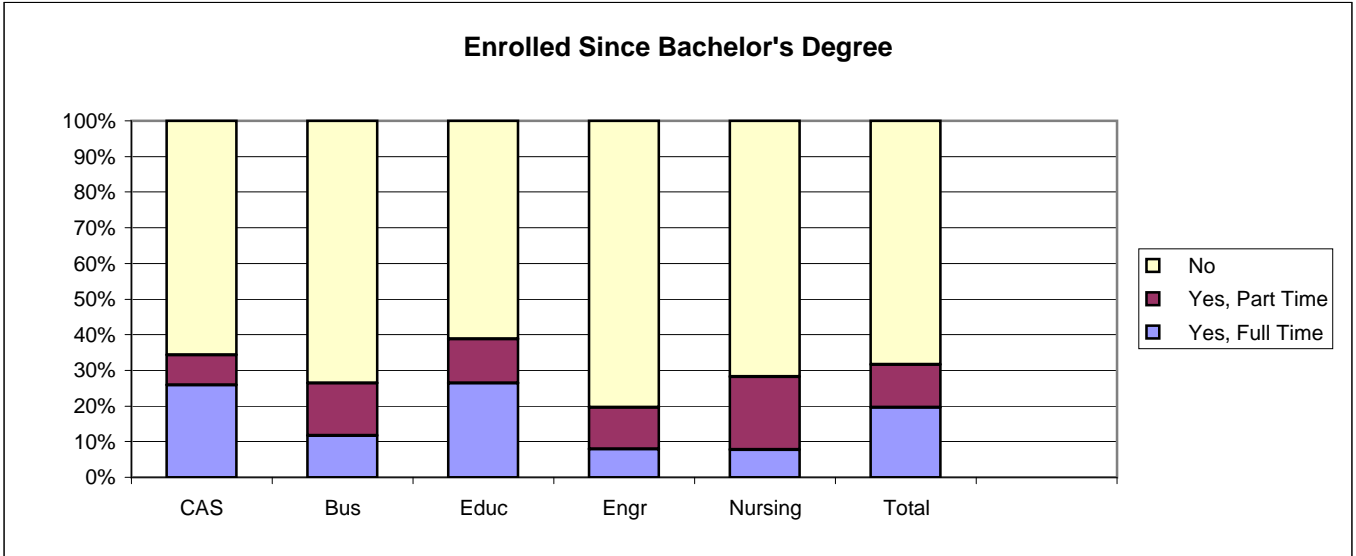
2005 Baccalaureate Graduates One Year Out *Employment, con't.*



Southern Illinois University Edwardsville
Survey of 2005 Baccalaureate Graduates -- One Year Out
Survey Responses -- Part II
Education Questions

School Detail	CAS	Bus	Educ	Engr	Nursing	Total
Number of Survey Respondents	249	164	121	51	39	624
10. Enrolled in College or University Since Degree?						
Yes, Full Time	25.8%	11.7%	26.4%	7.8%	7.7%	19.6%
Yes, Part Time	8.5%	14.7%	12.4%	11.8%	20.5%	11.9%
No	65.7%	73.6%	61.2%	80.4%	71.8%	68.5%
Number Responding	248	163	121	51	39	622
11. Pursuing or Have Completed an Additional Degree?						
Yes	73.7%	51.3%	64.3%	38.5%	64.7%	62.2%
No	26.3%	48.8%	35.7%	61.5%	35.3%	37.8%
Number Responding	114	80	70	26	17	307
The remaining questions in Part II were to be answered only by respondents who were pursuing or had completed another degree.						
	84	41	45	10	11	191
11b. Pursuing or Completed Which Degree?						
Associate's	2.4%	2.5%	0.0%	0.0%	0.0%	1.6%
Second Bachelor's	3.7%	10.0%	0.0%	10.0%	0.0%	4.3%
Academic Master's (MA, MS, MEd, etc)	39.0%	15.0%	64.4%	30.0%	60.0%	40.6%
Prof. Master's or Ed Specialist	31.7%	70.0%	17.8%	30.0%	10.0%	35.3%
Medicine (MD, OD)	4.9%	0.0%	0.0%	0.0%	0.0%	2.1%
Health Prof. (dentistry, pharmacy, etc.)	11.0%	2.5%	4.4%	0.0%	10.0%	7.0%
Theology/Divinity	0.0%	0.0%	0.0%	0.0%	0.0%	0.0%
Law (LLB, JD)	3.7%	0.0%	2.2%	10.0%	0.0%	2.7%
Doctorate (PhD, EdD, DA, DBA, etc.)	1.2%	0.0%	4.4%	20.0%	0.0%	2.7%
Other	2.4%	0.0%	6.7%	0.0%	20.0%	3.7%
Number Responding	82	40	45	10	10	187
12. How Well Bach. Degree Prepared You for Additional Degree						
Very Well	30.4%	15.0%	34.1%	44.4%	45.5%	29.5%
Well	41.8%	52.5%	34.1%	33.3%	27.3%	41.0%
Adequately	21.5%	30.0%	22.7%	11.1%	18.2%	23.0%
Inadequately	5.1%	2.5%	9.1%	11.1%	9.1%	6.0%
Poorly	1.3%	0.0%	0.0%	0.0%	0.0%	0.5%
Very Poorly	0.0%	0.0%	0.0%	0.0%	0.0%	0.0%
Number Responding	79	40	44	9	11	183

2005 Baccalaureate Graduates One Year Out Additional Education

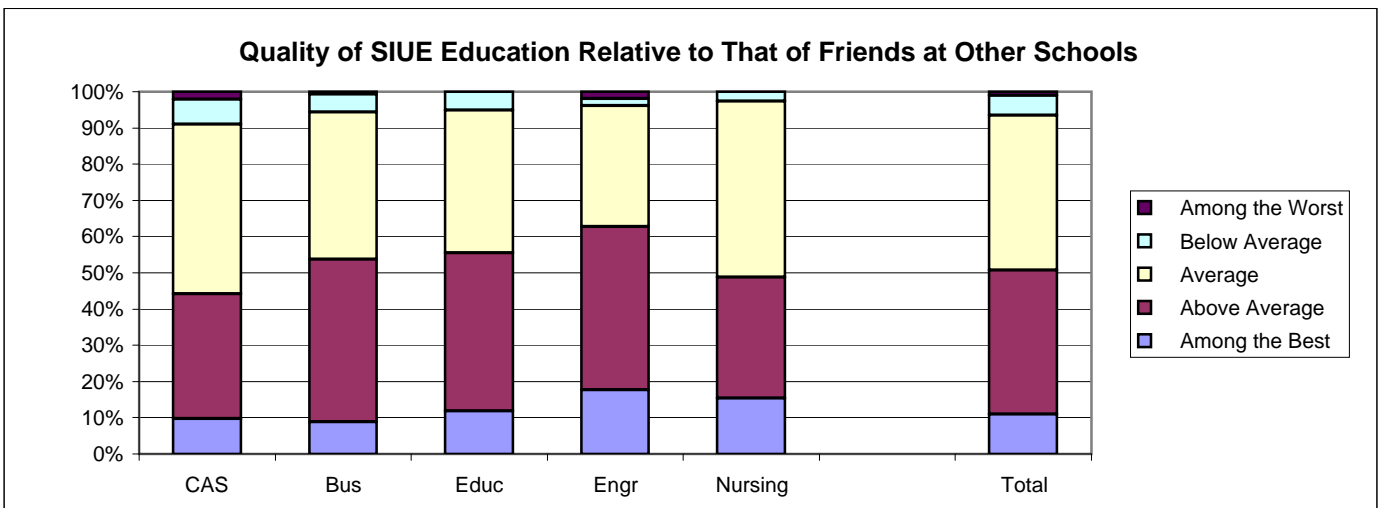
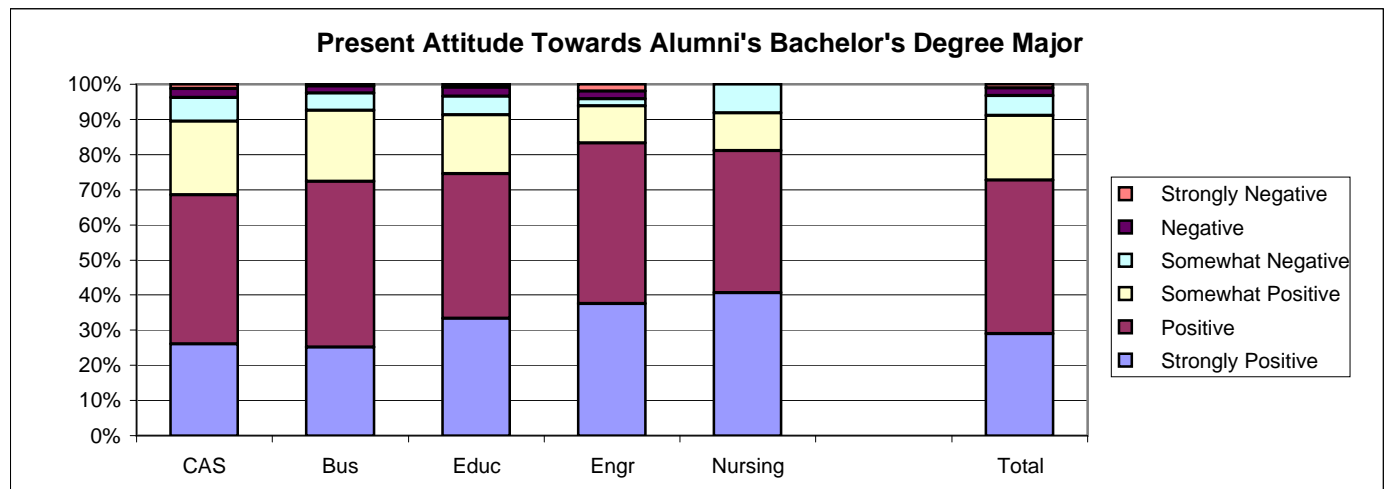
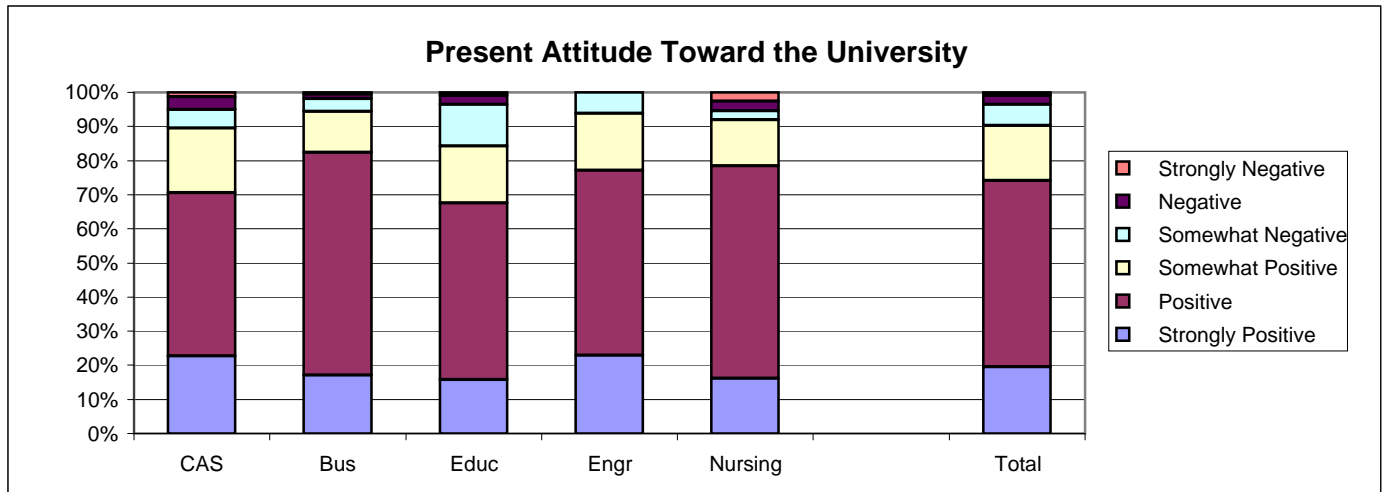


Southern Illinois University Edwardsville
Survey of 2005 Baccalaureate Graduates -- One Year Out
Survey Responses -- Part III
Satisfaction Questions

School Detail	CAS	Bus	Educ	Engr	Nursing	Total
Number of Survey Respondents	249	164	121	51	39	624
13. Present Attitude Towards the University						
Strongly Positive	22.7%	17.0%	15.8%	22.9%	16.2%	19.5%
Positive	47.9%	65.4%	51.8%	54.2%	62.2%	54.7%
Somewhat Positive	18.9%	11.9%	16.7%	16.7%	13.5%	16.1%
Somewhat Negative	5.5%	3.8%	12.3%	6.3%	2.7%	6.2%
Negative	3.8%	1.3%	2.6%	0.0%	2.7%	2.5%
Strongly Negative	1.3%	0.6%	0.9%	0.0%	2.7%	1.0%
Number Responding	238	159	114	48	37	596
14. Present Attitude Towards your Bachelor's Degree Major						
Strongly Positive	26.1%	25.2%	33.3%	37.5%	40.5%	29.0%
Positive	42.4%	47.2%	41.2%	45.8%	40.5%	43.6%
Somewhat Positive	21.0%	20.1%	16.7%	10.4%	10.8%	18.5%
Somewhat Negative	6.7%	5.0%	5.3%	2.1%	8.1%	5.7%
Negative	2.5%	1.9%	2.6%	2.1%	0.0%	2.2%
Strongly Negative	1.3%	0.6%	0.9%	2.1%	0.0%	1.0%
Number Responding	238	159	114	48	37	596

5/21/2007

2005 Baccalaureate Graduates One Year Out Satisfaction



Southern Illinois University Edwardsville
Survey of 2005 Baccalaureate Graduates -- One Year Out
Survey Responses -- Part IV
Educational Practices Questions

School Detail	CAS	Bus	Educ	Engr	Nursing	Total
Number of Survey Respondents	249	164	121	51	39	624
15. Faculty in Major Were Accessible Outside of Class						
Very Often	37.8%	19.0%	40.8%	25.5%	23.1%	31.5%
Often	48.6%	60.1%	45.0%	64.7%	43.6%	51.9%
Sometimes	12.0%	18.4%	14.2%	7.8%	30.8%	15.0%
Infrequently	0.8%	2.5%	0.0%	2.0%	2.6%	1.3%
Never	0.8%	0.0%	0.0%	0.0%	0.0%	0.3%
Number Responding	249	163	120	51	39	622
16. In Major, Student was Expected to Work Cooperatively with Other Students						
Very Often	24.6%	64.0%	45.0%	37.3%	43.6%	41.2%
Often	39.9%	29.3%	45.8%	47.1%	41.0%	38.9%
Sometimes	29.8%	6.7%	9.2%	11.8%	12.8%	17.2%
Infrequently	5.6%	0.0%	0.0%	3.9%	2.6%	2.7%
Never	0.0%	0.0%	0.0%	0.0%	0.0%	0.0%
Number Responding	248	164	120	51	39	622
17. In Major, Faculty Encouraged Student to Challenge Ideas (student's, other students, and in readings & materials)						
Very Often	29.4%	17.7%	27.5%	19.6%	23.1%	24.8%
Often	37.1%	36.6%	42.5%	35.3%	38.5%	37.9%
Sometimes	25.4%	32.3%	24.2%	29.4%	30.8%	27.7%
Infrequently	7.3%	12.8%	5.0%	7.8%	7.7%	8.4%
Never	0.8%	0.6%	0.8%	7.8%	0.0%	1.3%
Number Responding	248	164	120	51	39	622
18. In Major, Faculty Used Appropriate Teaching Activities to Help Student Learn						
Very Often	28.3%	15.9%	37.5%	9.8%	23.1%	25.0%
Often	52.6%	50.0%	49.2%	62.7%	56.4%	52.3%
Sometimes	16.6%	28.0%	10.8%	19.6%	20.5%	19.0%
Infrequently	2.4%	6.1%	2.5%	7.8%	0.0%	3.7%
Never	0.0%	0.0%	0.0%	0.0%	0.0%	0.0%
Number Responding	247	164	120	51	39	621
19. In Major, Faculty had High Expectations for Quality Of Student Work						
Very Often	36.1%	29.3%	41.7%	21.6%	53.8%	35.3%
Often	45.5%	53.0%	45.0%	56.9%	33.3%	47.6%
Sometimes	16.8%	14.6%	11.7%	19.6%	10.3%	15.0%
Infrequently	1.6%	3.0%	0.8%	2.0%	2.6%	1.9%
Never	0.0%	0.0%	0.8%	0.0%	0.0%	0.2%
Number Responding	244	164	120	51	39	618
20. In Major, Faculty Provided Timely Feedback						
Very Often	29.7%	18.3%	30.8%	19.6%	30.8%	26.1%
Often	43.9%	54.9%	52.5%	51.0%	51.3%	49.5%
Sometimes	22.8%	22.6%	15.0%	29.4%	17.9%	21.5%
Infrequently	3.3%	3.7%	1.7%	0.0%	0.0%	2.6%
Never	0.4%	0.6%	0.0%	0.0%	0.0%	0.3%
Number Responding	246	164	120	51	39	620

Southern Illinois University Edwardsville
Survey of 2005 Baccalaureate Graduates -- One Year Out
Survey Responses -- Part IV
Educational Practices Questions

School Detail, cont'd	CAS	Bus	Educ	Engr	Nursing	Total
21. In Major, Faculty Encouraged Students' Questions and Discussion in Class						
Very Often	46.7%	39.3%	51.3%	21.6%	41.0%	43.2%
Often	36.6%	47.9%	39.5%	56.9%	46.2%	42.4%
Sometimes	14.6%	12.3%	9.2%	19.6%	12.8%	13.3%
Infrequently	2.0%	0.6%	0.0%	2.0%	0.0%	1.1%
Never	0.0%	0.0%	0.0%	0.0%	0.0%	0.0%
Number Responding	246	163	119	51	39	618
22. In Major, Student Spent Necessary Time and Energy to Come to Class Prepared						
Very Often	43.7%	40.2%	49.2%	25.5%	41.0%	42.2%
Often	44.5%	42.1%	44.2%	45.1%	48.7%	44.1%
Sometimes	10.9%	17.7%	5.8%	27.5%	10.3%	13.0%
Infrequently	0.8%	0.0%	0.8%	2.0%	0.0%	0.6%
Never	0.0%	0.0%	0.0%	0.0%	0.0%	0.0%
Number Responding	247	164	120	51	39	621

5/22/2007

Southern Illinois University Edwardsville
Survey of 2005 Baccalaureate Graduates -- One Year Out
Survey Responses -- Part V
Program Quality Questions

School Detail	CAS	Bus	Educ	Engr	Nursing	Total
Number of Survey Respondents	249	164	121	51	39	624
23A. Quality of Major in Offering Sufficient Courses						
Excellent	29.3%	21.3%	36.7%	21.6%	38.5%	28.6%
Good	49.0%	61.0%	50.8%	54.9%	51.3%	53.1%
Fair	16.5%	15.2%	10.0%	19.6%	7.7%	14.6%
Poor	5.2%	2.4%	2.5%	3.9%	2.6%	3.7%
Number Responding	249	164	120	51	39	623
23B. Quality of Major in Offering Convenient Class Times						
Excellent	22.1%	14.6%	20.2%	9.8%	38.5%	19.8%
Good	44.2%	53.0%	52.1%	49.0%	48.7%	48.7%
Fair	26.9%	28.0%	25.2%	39.2%	10.3%	26.8%
Poor	6.8%	4.3%	2.5%	2.0%	2.6%	4.7%
Number Responding	249	164	119	51	39	622
23C. Quality of Major in Offering Logical Class Sequences						
Excellent	24.3%	15.9%	28.3%	15.7%	46.2%	23.5%
Good	51.8%	62.2%	55.8%	58.8%	46.2%	55.6%
Fair	21.5%	19.5%	14.2%	23.5%	5.1%	18.7%
Poor	2.4%	2.4%	1.7%	2.0%	2.6%	2.3%
Number Responding	247	164	120	51	39	621
24 Quality of Faculty in Major						
Excellent	43.1%	25.8%	50.8%	27.5%	33.3%	38.1%
Good	47.2%	61.3%	42.5%	52.9%	59.0%	51.2%
Fair	7.3%	12.3%	5.8%	15.7%	7.7%	9.0%
Poor	2.4%	0.6%	0.8%	3.9%	0.0%	1.6%
Number Responding	246	163	120	51	39	619
25 Grading Standards in Major Were:						
Too High	2.9%	7.9%	2.5%	2.0%	5.1%	4.2%
About Right	89.4%	89.6%	89.9%	96.1%	89.7%	90.1%
Too Low	7.8%	2.4%	7.6%	2.0%	5.1%	5.7%
Number Responding	245	164	119	51	39	618

5/22/2007

Southern Illinois University Edwardsville
Survey of 2005 Baccalaureate Graduates -- One Year Out
Survey Responses -- Part VI
Educational Effectiveness Questions

School Detail	CAS	Bus	Educ	Engr	Nursing	Total
Number of Survey Respondents	249	164	121	51	39	624
26. Helpfulness of University Experiences in:						
A. Developing Critical Thinking Ability						
Extremely Helpful	19.3%	9.9%	12.4%	18.0%	17.9%	15.3%
Very Helpful	45.0%	45.3%	50.4%	48.0%	43.6%	46.3%
Moderately Helpful	32.9%	37.9%	31.4%	28.0%	35.9%	33.7%
Slightly Helpful	2.4%	6.2%	4.1%	4.0%	2.6%	3.9%
Not Helpful	0.4%	0.6%	1.7%	2.0%	0.0%	0.8%
Number Responding	249	161	121	50	39	620
B. Developing Sense of Ethics						
Extremely Helpful	14.5%	11.2%	14.0%	8.0%	20.5%	13.4%
Very Helpful	35.7%	39.1%	38.0%	38.0%	33.3%	37.1%
Moderately Helpful	32.5%	38.5%	35.5%	40.0%	38.5%	35.6%
Slightly Helpful	11.2%	8.1%	6.6%	4.0%	7.7%	8.7%
Not Helpful	6.0%	3.1%	5.8%	10.0%	0.0%	5.2%
Number Responding	249	161	121	50	39	620
C. Understanding People with Different Backgrounds, Habits, Values, Appearances and Abilities						
Extremely Helpful	24.1%	19.6%	27.3%	12.0%	17.9%	22.2%
Very Helpful	39.4%	44.8%	41.3%	28.0%	43.6%	40.5%
Moderately Helpful	24.5%	24.5%	23.1%	34.0%	35.9%	25.7%
Slightly Helpful	8.4%	7.4%	6.6%	18.0%	2.6%	8.2%
Not Helpful	3.6%	3.7%	1.7%	8.0%	0.0%	3.4%
Number Responding	249	163	121	50	39	622
D. Becoming a More Active Citizen						
Extremely Helpful	9.2%	4.3%	6.6%	2.0%	10.3%	6.9%
Very Helpful	22.1%	22.7%	28.9%	12.0%	33.3%	23.5%
Moderately Helpful	34.9%	38.7%	31.4%	50.0%	38.5%	36.7%
Slightly Helpful	21.3%	19.6%	24.0%	20.0%	15.4%	20.9%
Not Helpful	12.4%	14.7%	9.1%	16.0%	2.6%	12.1%
Number Responding	249	163	121	50	39	622
E. Improving Quality of Life (aside from financial benefits)						
Extremely Helpful	11.3%	9.3%	14.0%	8.2%	12.8%	11.2%
Very Helpful	35.6%	37.0%	29.8%	22.4%	33.3%	33.7%
Moderately Helpful	29.1%	38.9%	35.5%	49.0%	38.5%	35.1%
Slightly Helpful	17.0%	11.1%	12.4%	10.2%	12.8%	13.8%
Not Helpful	6.9%	3.7%	8.3%	10.2%	2.6%	6.3%
Number Responding	247	162	121	49	39	618
F. Developing Reasoning Skills						
Extremely Helpful	17.3%	12.3%	14.9%	18.0%	15.4%	15.5%
Very Helpful	45.4%	45.1%	42.1%	50.0%	48.7%	45.2%
Moderately Helpful	29.7%	35.8%	34.7%	26.0%	28.2%	31.9%
Slightly Helpful	6.0%	5.6%	6.6%	4.0%	7.7%	6.0%
Not Helpful	1.6%	1.2%	1.7%	2.0%	0.0%	1.4%
Number Responding	249	162	121	50	39	621

Southern Illinois University Edwardsville
Survey of 2005 Baccalaureate Graduates -- One Year Out
Survey Responses -- Part VI
Educational Effectiveness Questions

School Detail, con't.	CAS	Bus	Educ	Engr	Nursing	Total
G. Viewing Problems from Different Perspectives						
Extremely Helpful	24.9%	19.6%	22.3%	16.0%	13.2%	21.6%
Very Helpful	44.6%	47.9%	47.9%	48.0%	57.9%	47.2%
Moderately Helpful	23.3%	27.0%	20.7%	28.0%	21.1%	24.0%
Slightly Helpful	4.4%	4.3%	8.3%	8.0%	7.9%	5.6%
Not Helpful	2.8%	1.2%	0.8%	0.0%	0.0%	1.6%
Number Responding	249	163	121	50	38	621
H. Developing Ability to Solve Problems						
Extremely Helpful	22.7%	20.4%	19.8%	30.0%	15.4%	21.6%
Very Helpful	45.7%	45.1%	41.3%	40.0%	53.8%	44.7%
Moderately Helpful	21.9%	28.4%	29.8%	24.0%	25.6%	25.5%
Slightly Helpful	6.9%	5.6%	6.6%	6.0%	5.1%	6.3%
Not Helpful	2.8%	0.6%	2.5%	0.0%	0.0%	1.8%
Number Responding	247	162	121	50	39	619
I. Making Informed Decisions as a Citizen						
Extremely Helpful	15.7%	14.8%	14.0%	8.0%	12.8%	14.4%
Very Helpful	35.9%	42.0%	36.4%	34.0%	46.2%	38.1%
Moderately Helpful	29.8%	29.0%	25.6%	40.0%	35.9%	30.0%
Slightly Helpful	13.7%	9.9%	16.5%	10.0%	5.1%	12.4%
Not Helpful	4.8%	4.3%	7.4%	8.0%	0.0%	5.2%
Number Responding	248	162	121	50	39	620
J. Developing Writing Skills						
Extremely Helpful	30.0%	28.6%	21.7%	6.0%	25.6%	25.8%
Very Helpful	35.2%	37.9%	43.3%	26.0%	41.0%	37.1%
Moderately Helpful	25.5%	24.2%	18.3%	40.0%	20.5%	24.6%
Slightly Helpful	6.1%	8.1%	12.5%	18.0%	10.3%	9.1%
Not Helpful	3.2%	1.2%	4.2%	10.0%	2.6%	3.4%
Number Responding	247	161	120	50	39	617
K. Developing Oral Communication Skills						
Extremely Helpful	28.3%	31.9%	27.5%	12.0%	23.1%	27.5%
Very Helpful	35.6%	39.9%	40.0%	32.0%	41.0%	37.6%
Moderately Helpful	25.9%	22.1%	20.0%	40.0%	25.6%	24.9%
Slightly Helpful	8.5%	4.3%	10.0%	10.0%	10.3%	7.9%
Not Helpful	1.6%	1.8%	2.5%	6.0%	0.0%	2.1%
Number Responding	247	163	120	50	39	619
L. Developing Knowledge of Scientific and Technological Developments						
Extremely Helpful	18.1%	9.9%	19.8%	34.0%	23.7%	17.9%
Very Helpful	28.5%	33.3%	41.3%	46.0%	44.7%	34.7%
Moderately Helpful	28.5%	38.3%	25.6%	20.0%	21.1%	29.4%
Slightly Helpful	18.1%	11.7%	9.9%	0.0%	7.9%	12.7%
Not Helpful	6.8%	6.8%	3.3%	0.0%	2.6%	5.3%
Number Responding	249	162	121	50	38	620

Southern Illinois University Edwardsville
Survey of 2005 Baccalaureate Graduates -- One Year Out
Survey Responses -- Part VI
Educational Effectiveness Questions

School Detail, con't.	CAS	Bus	Educ	Engr	Nursing	Total
27. Undergraduate Education Broadened Interest Beyond Subjects in Major						
Strongly Agree	21.4%	9.9%	13.3%	11.8%	12.8%	15.5%
Agree	50.4%	53.1%	54.2%	56.9%	56.4%	52.7%
Neutral	21.8%	26.5%	25.0%	25.5%	25.6%	24.2%
Disagree	5.2%	8.0%	6.7%	2.0%	2.6%	5.8%
Strongly Disagree	1.2%	2.5%	0.8%	3.9%	2.6%	1.8%
Number Responding	248	162	120	51	39	620
28. Importance of College Education to:						
A. Personal Life						
Very Important	58.3%	58.9%	70.2%	54.9%	64.1%	60.9%
Moderately Important	32.8%	27.6%	17.4%	31.4%	25.6%	27.9%
Slightly Important	6.1%	8.6%	9.1%	9.8%	10.3%	7.9%
Not Important	2.8%	4.9%	3.3%	3.9%	0.0%	3.4%
Number Responding	247	163	121	51	39	621
B. Community Life						
Very Important	30.4%	25.2%	31.4%	25.5%	35.9%	29.1%
Moderately Important	38.9%	42.9%	42.1%	29.4%	46.2%	40.3%
Slightly Important	21.9%	19.0%	15.7%	37.3%	17.9%	20.9%
Not Important	8.9%	12.9%	10.7%	7.8%	0.0%	9.7%
Number Responding	247	163	121	51	39	621
C. Professional Life						
Very Important	59.1%	63.0%	74.2%	80.4%	76.9%	65.9%
Moderately Important	23.9%	22.2%	15.8%	11.8%	20.5%	20.7%
Slightly Important	11.3%	10.5%	5.8%	7.8%	2.6%	9.2%
Not Important	5.7%	4.3%	4.2%	0.0%	0.0%	4.2%
Number Responding	247	162	120	51	39	619
29. Quality of SIUE Education Relative to That of Friends at Other Schools						
Among the Best	9.8%	8.8%	11.8%	17.6%	15.4%	10.9%
Above Average	34.3%	45.0%	43.7%	45.1%	33.3%	39.7%
Average	46.9%	40.6%	39.5%	33.3%	48.7%	42.8%
Below Average	6.9%	5.0%	5.0%	2.0%	2.6%	5.4%
Among the Worst	2.0%	0.6%	0.0%	2.0%	0.0%	1.1%
Number Responding	245	160	119	51	39	614
30. Involvement Since Bachelor's Degree with:						
A. Organized, Formal, Career Related Learning (non-degree)						
Currently Involved	26.8%	35.6%	33.9%	27.5%	33.3%	31.0%
Have Been Involved	33.7%	30.1%	35.5%	37.3%	51.3%	34.5%
Never Involved	39.4%	34.4%	30.6%	35.3%	15.4%	34.5%
Number Responding	246	163	121	51	39	620
B. Personal Enrichment Studies						
Currently Involved	21.8%	15.3%	21.0%	11.8%	20.5%	19.0%
Have Been Involved	37.1%	28.2%	33.6%	35.3%	41.0%	34.2%
Never Involved	41.1%	56.4%	45.4%	52.9%	38.5%	46.8%
Number Responding	248	163	119	51	39	620

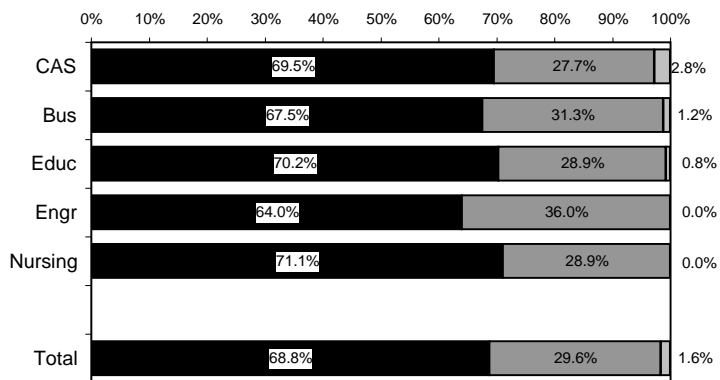
Southern Illinois University Edwardsville
Survey of 2005 Baccalaureate Graduates -- One Year Out
Survey Responses -- Part VI
Educational Effectiveness Questions

School Detail, con't.	CAS	Bus	Educ	Engr	Nursing	Total
C. Professional Activities or Organizations						
Currently Involved	32.3%	28.2%	39.7%	41.2%	43.6%	34.1%
Have Been Involved	35.5%	35.6%	31.4%	23.5%	25.6%	33.1%
Never Involved	32.3%	36.2%	28.9%	35.3%	30.8%	32.8%
Number Responding	248	163	121	51	39	622
D. Volunteer Work / Community Svc Activities or Organizations						
Currently Involved	33.9%	23.9%	28.1%	7.8%	25.6%	27.5%
Have Been Involved	30.2%	36.8%	41.3%	39.2%	51.3%	36.2%
Never Involved	35.9%	39.3%	30.6%	52.9%	23.1%	36.3%
Number Responding	248	163	121	51	39	622
E. Social / Recreational Activities or Organizations						
Currently Involved	36.6%	30.7%	32.2%	25.5%	43.6%	33.7%
Have Been Involved	35.4%	42.3%	42.1%	37.3%	23.1%	37.9%
Never Involved	28.0%	27.0%	25.6%	37.3%	33.3%	28.4%
Number Responding	246	163	121	51	39	620
F. Political Activities or Organizations						
Currently Involved	6.5%	1.8%	3.3%	7.8%	0.0%	4.3%
Have Been Involved	20.6%	17.2%	12.4%	9.8%	15.4%	16.9%
Never Involved	72.9%	81.0%	84.3%	82.4%	84.6%	78.7%
Number Responding	247	163	121	51	39	621
G. Religious / Ethical Activities or Organizations						
Currently Involved	24.6%	28.8%	30.6%	29.4%	30.8%	27.7%
Have Been Involved	27.4%	28.2%	28.1%	29.4%	35.9%	28.5%
Never Involved	48.0%	42.9%	41.3%	41.2%	33.3%	43.9%
Number Responding	248	163	121	51	39	622
H. Support or Participation in the Arts (music, drama, dance, art)						
Currently Involved	27.5%	11.7%	14.9%	2.0%	7.7%	17.6%
Have Been Involved	25.9%	20.9%	32.2%	29.4%	23.1%	25.9%
Never Involved	46.6%	67.5%	52.9%	68.6%	69.2%	56.5%
Number Responding	247	163	121	51	39	621
I. Reading books not directly related to your job						
Currently Involved	63.3%	47.2%	62.8%	33.3%	46.2%	55.5%
Have Been Involved	24.2%	38.0%	26.4%	39.2%	35.9%	30.2%
Never Involved	12.5%	14.7%	10.7%	27.5%	17.9%	14.3%
Number Responding	248	163	121	51	39	622

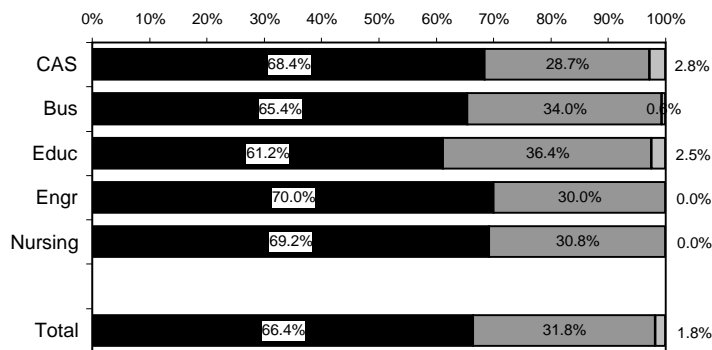
Helpfulness of University Experiences in:

Very to Extremely Helpful
 Slightly to Moderately Helpful
 Not Helpful

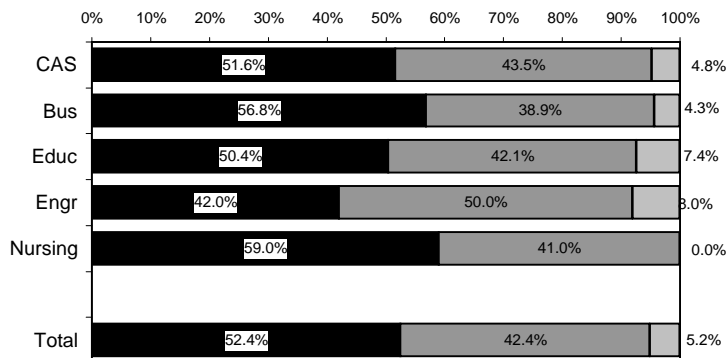
Viewing Problems from Different Perspectives



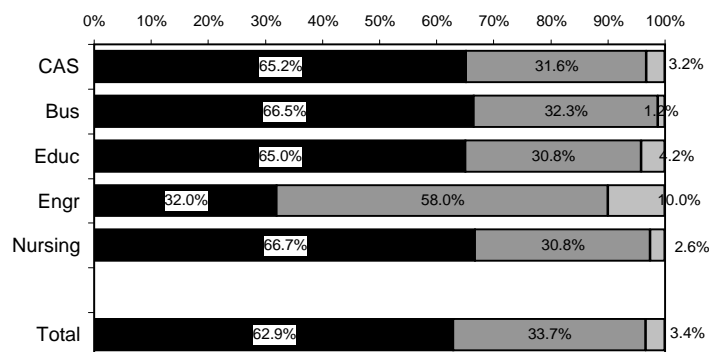
Developing Ability to Solve Problems



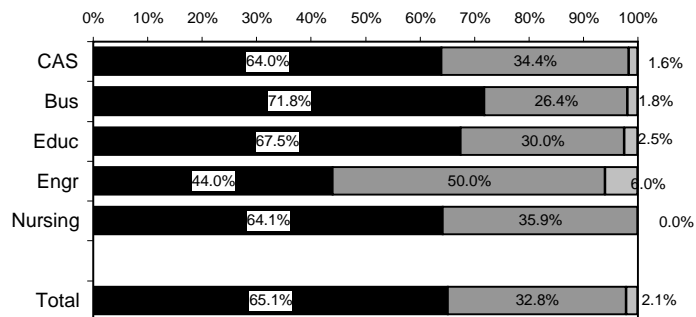
Making Informed Decisions as a Citizen



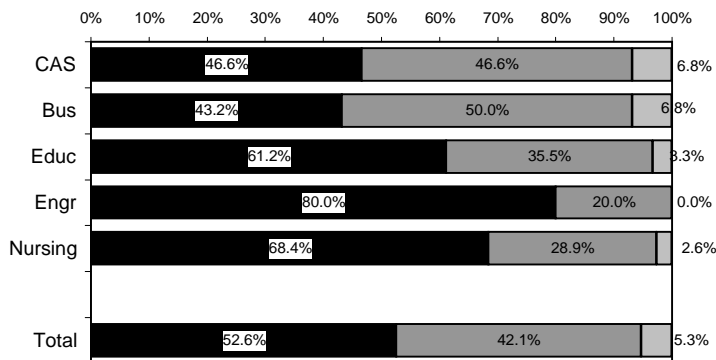
Developing Writing Skills



Developing Oral Communication Skills



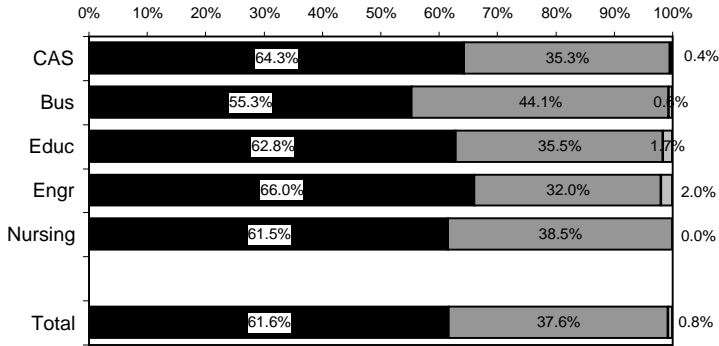
Developing Knowledge of Scientific and Technological Developments



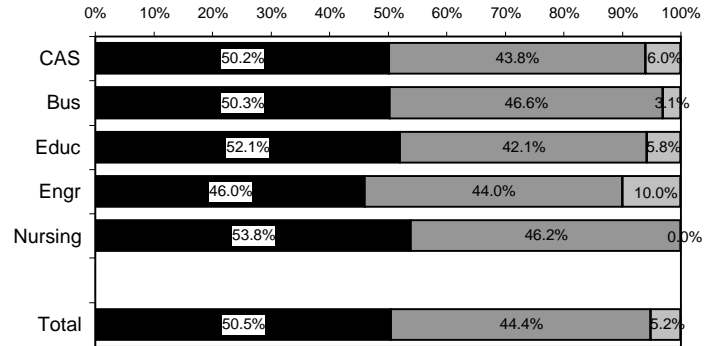
Helpfulness of University Experiences in:

Very to Extremely Helpful
 Slightly to Moderately Helpful
 Not Helpful

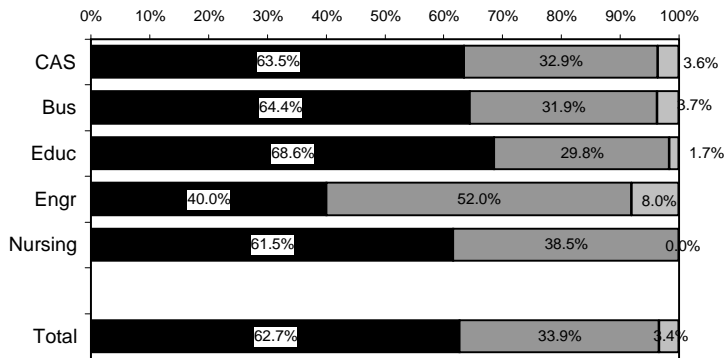
Developing Critical Thinking Ability



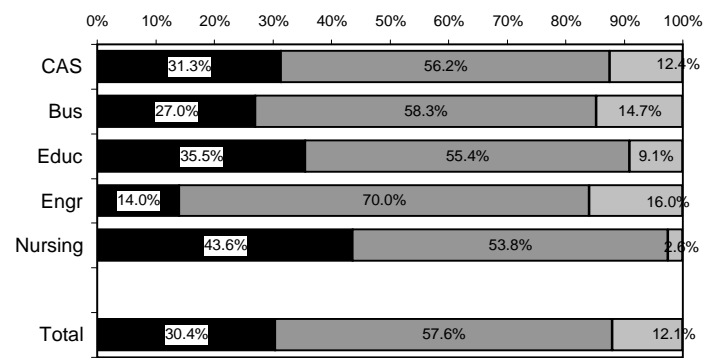
Developing Sense of Ethics



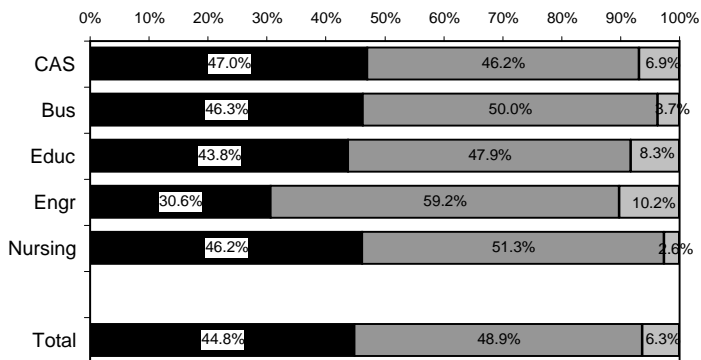
Understanding People with Different Backgrounds



Becoming a More Active Citizen



Improving Quality of Life (aside from financial benefits)



Developing Reasoning Skills

