

**Southern Illinois University at Edwardsville**  
**Survey of 2004 Baccalaureate Graduates -- One Year Out**

*Survey Results for Schools*

July 2006

Survey Administered By  
The Office of Undergraduate Assessment and Program Review

Survey Results Compiled By  
The Office of Institutional Research and Studies

# Southern Illinois University at Edwardsville

## Survey of 2004 Baccalaureate Graduates -- One Year Out

### Contents

#### Introduction

#### Methodology

#### Survey Population and Respondents

- Charts: *2004 Baccalaureate Recipients, Profile*
- *Gender*
  - *Race/Ethnic*
  - *Age at Graduation*
  - *Matriculation Status*
  - *Time to Degree for New Freshmen*
  - *Time to Degree for New Transfers*

Table: *Comparison of All Graduates to Survey Respondents*

#### Survey Results

- Charts: *2004 Baccalaureate Graduates One Year Out, Satisfaction*
- *Present Attitude Toward the University*
  - *Present Attitude Towards Alumni's Bachelor's Degree Major*
  - *Quality of SIUE Education Relative to That of Friends at Other Schools*

- 2004 Baccalaureate Graduates One Year Out, Additional Education*
- *Enrolled Since Bachelors Degree*
  - *How Well Bachelor's Degree Prepared Alumni for Additional Degree*

- 2004 Baccalaureate Graduates One Year Out, Employment*
- *Employment Status*
  - *Place of Employment*
  - *Job in Field Related to Major?*
  - *Job Satisfaction*
  - *How Well Bachelor's Degree Program Prepared Alumni for Present Job*
  - *Mean Salary of Alumni Employed Full Time*

- Helpfulness of University Experiences in:*
- *Developing Critical Thinking Ability*
  - *Developing Sense of Ethics*
  - *Understanding People with Different Backgrounds*
  - *Becoming a more Active Citizen*
  - *Improving Quality of Life (aside from financial benefits)*
  - *Developing Reasoning Skills*
  - *Viewing Problems from Different Perspectives*
  - *Developing Ability to Solve Problems*
  - *Making Informed Decisions as a Citizen*
  - *Developing Writing Skills*

- *Developing Oral Communication Skills*
- *Developing Knowledge of Scientific and Technological Developments*

Tables:

<i>Part I</i>	<i>Employment Questions</i>
<i>Part II</i>	<i>Education Questions</i>
<i>Part III</i>	<i>Satisfaction Questions</i>
<i>Part IV</i>	<i>Educational Practices Questions</i>
<i>Part V</i>	<i>Program Quality Questions</i>
<i>Part VI</i>	<i>Educational Effectiveness Questions</i>

## **Questionnaire**

## Southern Illinois University Edwardsville Survey of 2004 Baccalaureate Graduates -- One Year Out

### Introduction

This one-year out baccalaureate survey was done to provide data for the University's undergraduate program reviews and other planning uses, and to participate in the Illinois Board of Higher Education Baccalaureate Graduates' Follow-up System.

<b>IBHE Survey Schedule and Population Definition</b>		
Survey Year	Survey Type	Survey Group
1992	One-Year Out Survey	Class of '91
1993	Five-Year Out Survey	Class of '88
1994	Ten-Year Out Survey	Class of '84
1995	One-Year Out Survey	Class of '94
1996	Five-Year Out Survey	Class of '91
1997	Nine-Year Out Survey	Class of '88
1998	One-Year Out Survey	Class of '97
1999	Five-Year Out Survey	Class of '94
2000	Nine-Year Out Survey	Class of '91
2001	One-Year Out Survey	Class of '00
2002	Five-Year Out Survey	Class of '97
2003	Nine-Year Out Survey	Class of '94
2004	One-Year Out Survey	Class of '03
2005	Five-Year Out Survey	Class of '00
2006	Nine-Year Out Survey	Class of '97
2007	One-Year Out Survey	Class of '06
2008	Five-Year Out Survey	Class of '03
2009	Nine-Year Out Survey	Class of '00

After the first six years, the surveys were reviewed and changed, modifying some questions and value scales, and adding some additional questions.

The current survey was administered during the spring and summer of 2005 to calendar year 2004 baccalaureate graduates of SIUE. The questionnaire includes 18 questions common to all Illinois public universities. These are the first 18 questions in the survey, forming Parts I, II, III, and the beginning of Part IV (Employment Questions, Education Questions, Satisfaction Questions, and Educational Practices Questions). SIUE added to these one question on industry of employment and three additional questions on educational practices, and appended two additional parts to the survey to add questions about program quality, and educational effectiveness. (A questionnaire is included in Appendix A.)

### Methodology

The survey questionnaire and a cover letter were adapted from the questionnaire and letter

developed for previous surveys. SIUE Alumni Services provided current addresses for calendar year 2004 graduates as determined from institutional records. The survey was distributed in May 2005 to May 2004 baccalaureate graduates and in August 2005 to August 2004 and December 2004 baccalaureate graduates. Each envelope included a cover letter, a questionnaire, and a postage-paid, pre-addressed return envelope. Each questionnaire was stamped with a sequential, identifying number which was also stamped on a listing of the graduates (this aided in identifying the surveys when returned).

On April 18, 2005 approximately two weeks before the first set of surveys were to be mailed, a postcard was sent to the 997 May 2004 baccalaureate graduates for whom addresses were available, notifying the alumni that they would be receiving a questionnaire and encouraging them to complete and return the survey. Surveys were mailed first class on May 5, 2005. On May 17<sup>st</sup>, approximately three weeks after the survey was mailed and when the rate of survey returns had decreased, a follow-up postcard requesting that the survey be returned was mailed to each student who had not returned his or her survey. On June 9<sup>th</sup> a second wave mailing of the surveys was sent to the 717 remaining non-respondents.

The second distribution began with the preliminary postcard mailed on August 5, 2005 to the 816 August and December 2004 baccalaureate graduates with known addresses. Surveys were mailed first class to this group on August 19, 2005 with a follow-up post card mailed to non-responders on September 2, 2005. A second wave mailing of the survey was sent to 676 non-responders on September 16, 2005.

Returned surveys began arriving on April 28<sup>th</sup> and continued through the summer and fall, with a few arriving as late as January 2006. As the surveys came in, each was matched with the corresponding stamped listing. The students' names were then checked against the alphabetic list of alumni to verify (or, if the alumnus chose not to provide the identification number, to obtain) the student identification number. The student identification number was the key which allowed merging of survey data with administrative records (e.g., biographic, graduation, matriculation, and enrollment information).

**Southern Illinois University Edwardsville**  
**Survey of 2004 Baccalaureate Graduates -- One Year Out**

*Survey Population and Respondents*

	Number of Graduates
2004 Baccalaureate Degrees	1,864
Less persons who received 2 baccalaureate degrees	24
2004 Baccalaureate Graduates	1,840
Less Graduates with No Address Available *	1
Graduates Surveyed	1,839
Less Non-Deliverable Surveys	14
Less Non-Responding Graduates	1,554
Survey Respondents	271
Gross Response Rate (Respondents/Total Surveyed)	14.74%
Adjusted Response Rate (Respondents/Delivered Surveys)	14.85%

\* Includes deceased alumni, foreign addresses and known bad addresses.

**Southern Illinois University Edwardsville**  
**Survey of 2004 Baccalaureate Graduates -- One Year Out**

*Comparison of All Graduates to Survey Respondents*

	All Baccalaureate Graduates		One Year Out Survey Respondents	
	Number	Percent	Number	Percent
<b>Total</b>	1840	100.0%	271	100.0%
Female	1097	59.6%	175	64.6%
Male	743	40.4%	94	34.7%
Missing Data	0	0.0%	2	0.7%
White, Non-Hispanic	1614	87.7%	240	88.6%
Black, Non-Hispanic	145	7.9%	18	6.6%
Asian/Pacific Islander	28	1.5%	6	2.2%
American Indian/Alaskan Native	5	0.3%	0	0.0%
Hispanic	27	1.5%	5	1.8%
Non-Resident Alier	21	1.1%	0	0.0%
Missing Data	0	0.0%	2	0.7%
Age at Graduator	range = 20 to 62 median = 22.9		range = 20 to 62 median = 23.0	
Bachelor of Science	1491	81.0%	208	76.8%
Bachelor of Music	20	1.1%	3	1.1%
Bachelor of Arts	181	9.8%	29	10.7%
Bachelor of Fine Arts	15	0.8%	2	0.7%
Bachelor of Sci in Accountancy	65	3.5%	13	4.8%
Bachelor of Liberal Studies	68	3.7%	14	5.2%
Missing Data	0	0.0%	2	0.7%
Graduated Spring 2004	1005	54.6%	4	1.5%
Graduated Summer 2004	303	16.5%	99	36.5%
Graduated Fall 2004	532	28.9%	166	61.3%
Missing Data	0	0.0%	2	0.7%
Degree From College of Arts and Science	692	37.6%	114	42.1%
Degree From School of Business	480	26.1%	77	28.4%
Degree from School of Education	396	21.5%	54	19.9%
Degree from School of Engineering	173	9.4%	13	4.8%
Degree from School of Nursing	99	5.4%	11	4.1%
Missing Data	0	0.0%	2	0.7%
Matriculated as a New Freshman	788	42.8%	104	38.4%
Matriculated as a Transfer	1017	55.3%	161	59.4%
Matriculated as a Non-Degree Student	35	1.9%	4	1.5%
Missing Data	0	0.0%	2	0.7%
Time to Degree for New Freshmen				
3 Years or Fewer	7	0.9%	1	1.0%
4 Years	315	40.0%	28	26.9%
5 Years	279	35.4%	49	47.1%
6 Years	93	11.8%	13	12.5%
7 Years	32	4.1%	5	4.8%
8 Years	13	1.6%	0	0.0%
9 Years	7	0.9%	1	1.0%
10 Years	4	0.5%	0	0.0%
11 Years or More	38	4.8%	7	6.7%
Missing Data	0	0.0%	0	0.0%
Time to Degree for Transfers				
2 or Fewer Years	234	23.0%	31	19.3%
3 Years	363	35.7%	70	43.5%
4 Years	220	21.6%	30	18.6%
5 Years	85	8.4%	10	6.2%
6 Years	38	3.7%	5	3.1%
7 Years	14	1.4%	1	0.6%
8 Years	13	1.3%	2	1.2%
9 Years	9	0.9%	3	1.9%
10 Years or More	41	4.0%	9	5.6%
Missing Data	0	0.0%	0	0.0%
Graduating GPA (4 point scale)	Mean = 3.151 Std Dev = 0.470 Maximum = 4.000 Minimum = 2.012 N = 1838		Mean = 3.141 Std Dev = 0.488 Maximum = 4.000 Minimum = 2.131 N = 269	
7/14/2006				

**Southern Illinois University Edwardsville**  
**Survey of 2004 Baccalaureate Graduates -- One Year Out**

*Comparison of All Graduates to Survey Respondents*

School Detail	All Graduates						
	CAS	Bus	Educ	Engr	Nursing	Total	
<b>Total</b>	692	480	396	173	99	1840	
Female	64.5%	50.4%	87.6%	16.2%	113.1%	63.9%	
Male	35.0%	44.0%	17.2%	74.6%	9.1%	35.8%	
Missing Data	0.0%	0.0%	0.0%	0.0%	0.0%	0.0%	
White, Non-Hispanic	87.1%	86.3%	90.9%	85.0%	90.9%	87.7%	
Black, Non-Hispanic	8.8%	8.8%	7.1%	5.2%	5.1%	7.9%	
Asian/Pacific Islander	1.6%	1.9%	0.3%	3.5%	1.0%	1.5%	
American Indian/Alaskan Native	0.1%	0.6%	0.3%	0.0%	0.0%	0.3%	
Hispanic	1.7%	0.6%	1.5%	1.7%	3.0%	1.5%	
Non-Resident Alien	0.6%	1.9%	0.0%	4.6%	0.0%	1.1%	
Missing Data	0.0%	0.0%	0.0%	0.0%	0.0%	0.0%	
Age at Graduation	range	20 to 58	20 to 52	21 to 52	21 to 44	21 to 62	20 to 62
	median	23.0	22.7	22.94	23.15	23.61	22.9
Bachelor of Science	62.9%	86.5%	94.9%	96.0%	100.0%	81.0%	
Bachelor of Music	2.9%	0.0%	0.0%	0.0%	0.0%	1.1%	
Bachelor of Arts	22.3%	0.0%	5.1%	4.0%	0.0%	9.8%	
Bachelor of Fine Arts	2.2%	0.0%	0.0%	0.0%	0.0%	0.8%	
Bachelor of Sci in Accountancy	0.0%	13.5%	0.0%	0.0%	0.0%	3.5%	
Bachelor of Liberal Studies	9.8%	0.0%	0.0%	0.0%	0.0%	3.7%	
Missing Data	0.0%	0.0%	0.0%	0.0%	0.0%	0.0%	
Graduated Spring 2004	49.6%	48.3%	68.2%	58.4%	59.6%	54.6%	
Graduated Summer 2004	21.0%	18.3%	10.6%	12.7%	6.1%	16.5%	
Graduated Fall 2004	29.5%	33.3%	21.2%	28.9%	34.3%	28.9%	
Missing Data	0.0%	0.0%	0.0%	0.0%	0.0%	0.0%	
Matriculated as a New Freshman	42.5%	44.4%	43.4%	42.2%	36.4%	42.8%	
Matriculated as a Transfer	56.1%	53.8%	55.8%	56.1%	53.5%	55.3%	
Matriculated as a Non-Degree Student	1.4%	1.9%	0.8%	1.7%	10.1%	1.9%	
Missing Data	0.0%	0.0%	0.0%	0.0%	0.0%	0.0%	
Time to Degree for New Freshmen							
3 Years or Fewer	1.0%	0.9%	0.0%	2.7%	0.0%	0.9%	
4 Years	38.1%	41.3%	41.9%	32.9%	52.8%	40.0%	
5 Years	35.0%	35.2%	34.9%	41.1%	30.6%	35.4%	
6 Years	12.2%	12.2%	9.3%	16.4%	8.3%	11.8%	
7 Years	4.8%	5.2%	2.3%	4.1%	0.0%	4.1%	
8 Years	1.7%	2.3%	1.7%	0.0%	0.0%	1.6%	
9 Years	0.3%	0.0%	2.9%	1.4%	0.0%	0.9%	
10 Years	1.0%	0.0%	0.6%	0.0%	0.0%	0.5%	
11 Years or More	5.8%	2.8%	6.4%	1.4%	8.3%	4.8%	
Missing Data	0.0%	0.0%	0.0%	0.0%	0.0%	0.0%	
Time to Degree for Transfers							
2 or Fewer Years	22.9%	24.8%	23.5%	13.4%	30.2%	23.0%	
3 Years	33.0%	35.3%	39.8%	39.2%	34.0%	35.7%	
4 Years	22.7%	20.5%	18.6%	27.8%	20.8%	21.6%	
5 Years	8.8%	8.5%	6.8%	8.2%	11.3%	8.4%	
6 Years	4.1%	4.7%	3.6%	2.1%	0.0%	3.7%	
7 Years	1.5%	1.9%	0.9%	1.0%	0.0%	1.4%	
8 Years	2.3%	0.4%	1.4%	0.0%	0.0%	1.3%	
9 Years	0.5%	0.8%	1.4%	2.1%	0.0%	0.9%	
10 Years or More	4.1%	3.1%	4.1%	6.2%	3.8%	4.0%	
Missing Data	0.0%	0.0%	0.0%	0.0%	0.0%	0.0%	
Graduating GPA (4 point scale)	Mean	3.170	2.949	3.373	3.005	3.367	3.151
	Std Dev	0.478	0.425	0.408	0.453	0.362	0.470

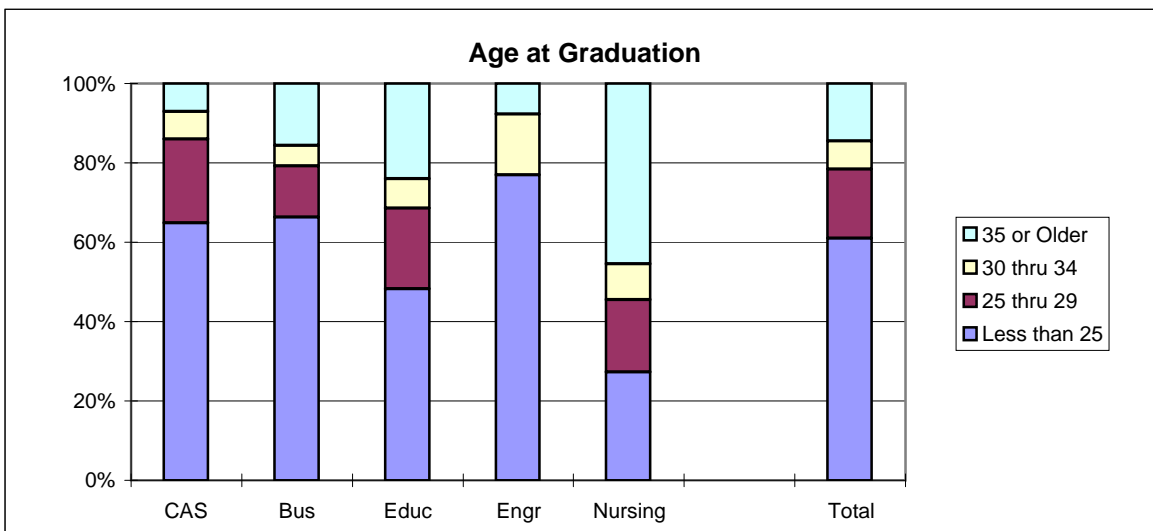
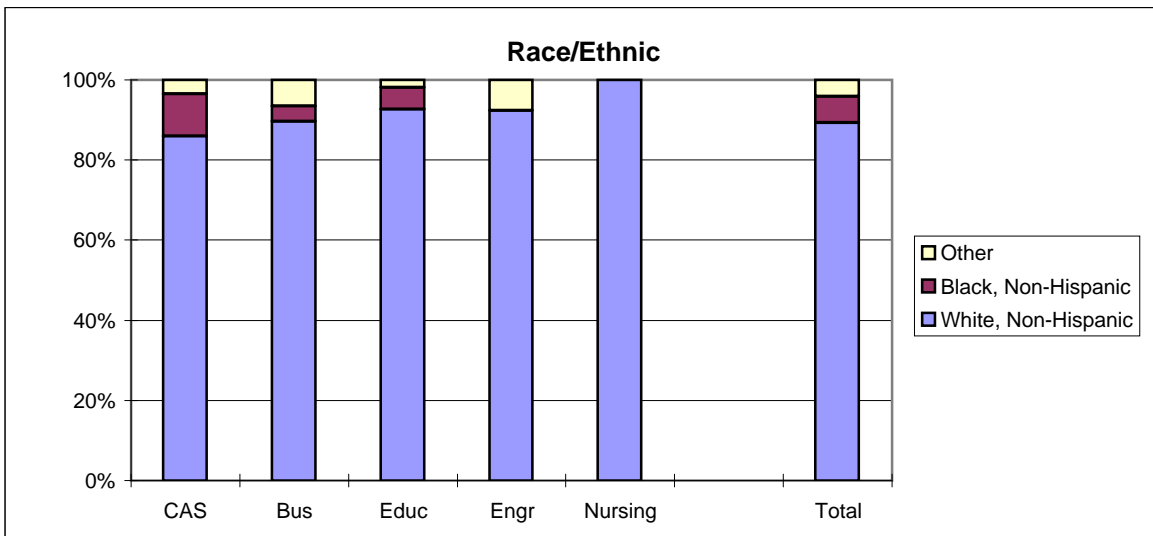
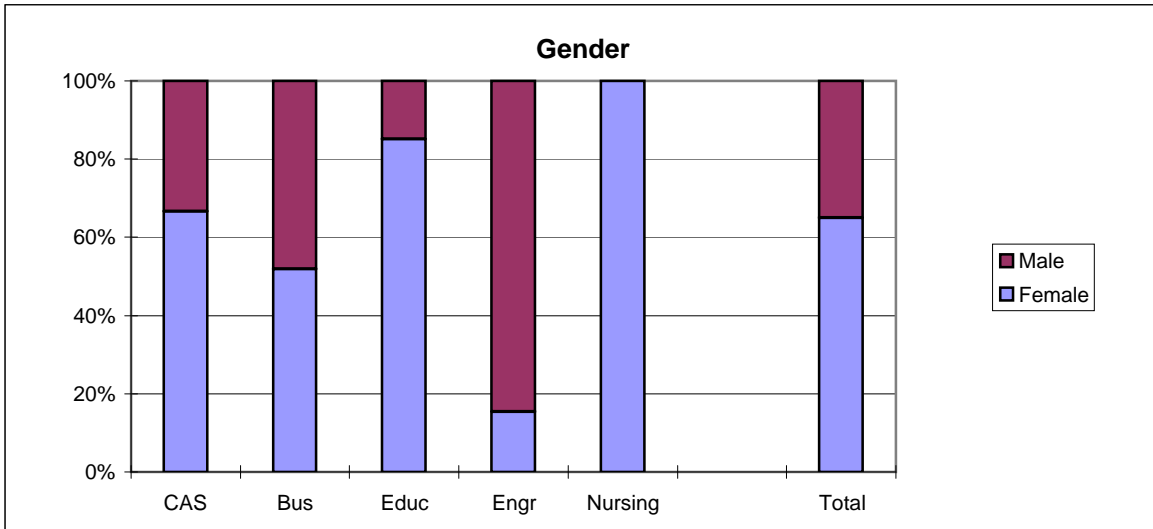


**Southern Illinois University Edwardsville**  
**Survey of 2004 Baccalaureate Graduates -- One Year Out**

*Comparison of All Graduates to Survey Respondents, cont.*

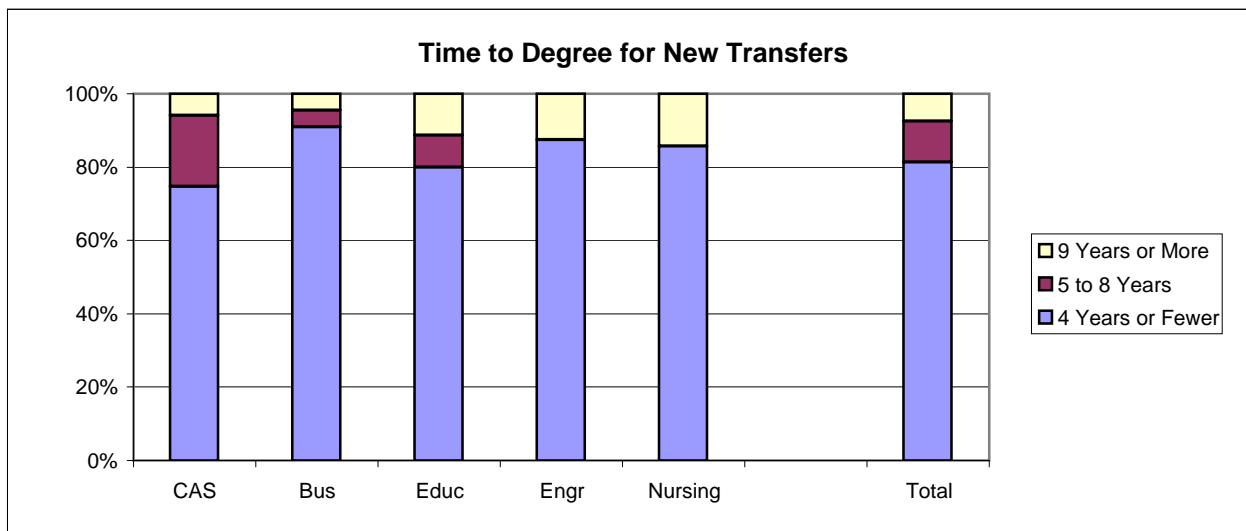
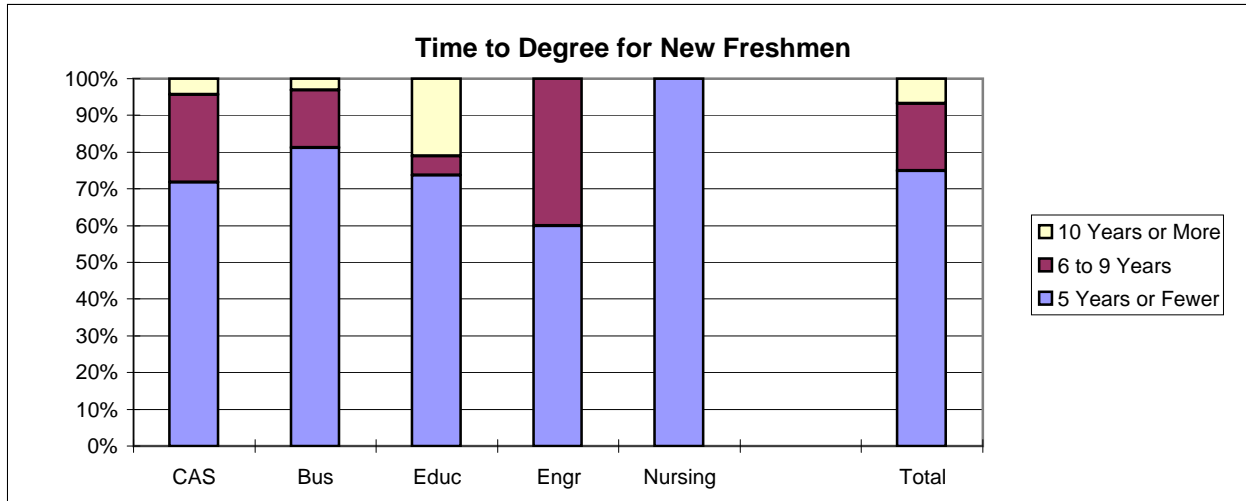
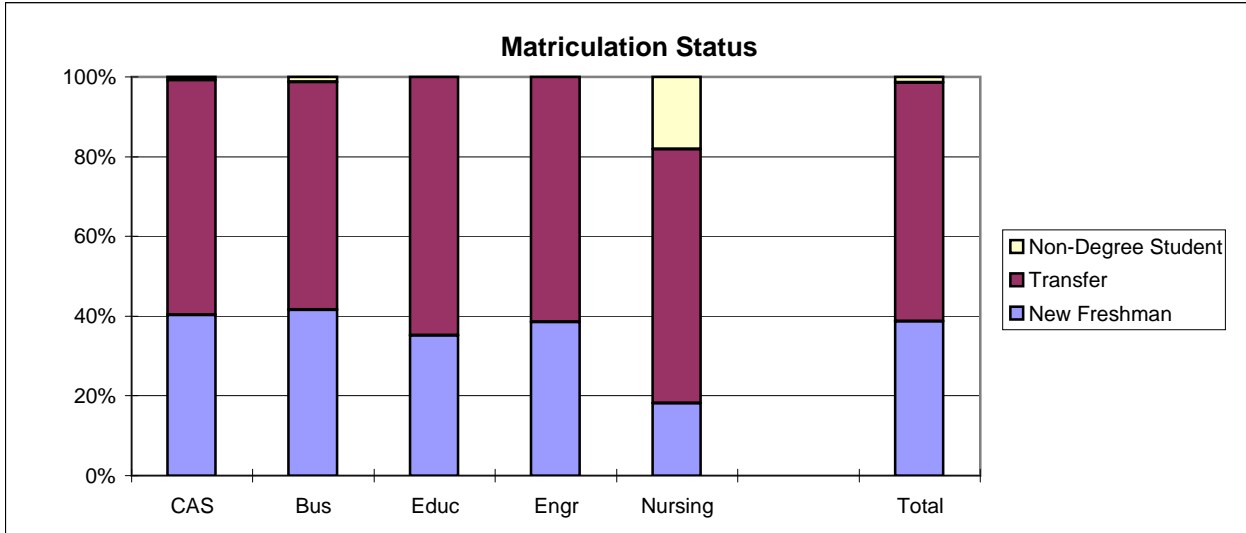
School Detail	All One Year Out Survey Respondents					
	CAS	Bus	Educ	Engr	Nursing	Total
<b>Total</b>	114	77	54	13	11	271
Female	66.7%	51.9%	85.2%	15.4%	100.0%	64.6%
Male	33.3%	48.1%	14.8%	84.6%	0.0%	34.7%
Missing Data	0.0%	0.0%	0.0%	0.0%	0.0%	0.7%
White, Non-Hispanic	86.0%	89.6%	92.6%	92.3%	100.0%	88.6%
Black, Non-Hispanic	10.5%	3.9%	5.6%	0.0%	0.0%	6.6%
Asian/Pacific Islander	1.8%	5.2%	0.0%	0.0%	0.0%	2.2%
American Indian/Alaskan Native	0.0%	0.0%	0.0%	0.0%	0.0%	0.0%
Hispanic	1.8%	1.3%	1.9%	7.7%	0.0%	1.8%
Non-Resident Alien	0.0%	0.0%	0.0%	0.0%	0.0%	0.0%
Missing Data	0.0%	0.0%	0.0%	0.0%	0.0%	0.7%
Age at Graduation						
range	21 to 53	20 to 46	21 to 52	22 to 44	22 to 62	20 to 62
median	23	22.7	24.33	22.0	25	22.9
Bachelor of Science	60.5%	83.1%	94.4%	100.0%	100.0%	76.8%
Bachelor of Music	2.6%	0.0%	0.0%	0.0%	0.0%	1.1%
Bachelor of Arts	22.8%	0.0%	5.6%	0.0%	0.0%	10.7%
Bachelor of Fine Arts	1.8%	0.0%	0.0%	0.0%	0.0%	0.7%
Bachelor of Sci in Accountancy	0.0%	16.9%	0.0%	0.0%	0.0%	4.8%
Bachelor of Liberal Studies	12.3%	0.0%	0.0%	0.0%	0.0%	5.2%
Missing Data	0.0%	0.0%	0.0%	0.0%	0.0%	0.7%
Graduated Spring 2004	1.8%	1.3%	0.0%	7.7%	0.0%	1.5%
Graduated Summer 2004	36.0%	45.5%	29.6%	30.8%	27.3%	36.5%
Graduated Fall 2004	62.3%	53.2%	70.4%	61.5%	72.7%	61.3%
Missing Data	0.0%	0.0%	0.0%	0.0%	0.0%	0.7%
Matriculated as a New Freshman	40.4%	41.6%	35.2%	38.5%	18.2%	38.4%
Matriculated as a Transfer	40.4%	41.6%	35.2%	38.5%	18.2%	38.4%
Matriculated as a Non-Degree Student	58.8%	57.1%	64.8%	61.5%	63.6%	59.4%
Missing Data	0.0%	0.0%	0.0%	0.0%	0.0%	0.7%
Time to Degree for New Freshmen						
3 Years or Fewer	0.0%	3.1%	0.0%	0.0%	0.0%	1.0%
4 Years	21.7%	34.4%	21.1%	20.0%	100.0%	26.9%
5 Years	50.0%	43.8%	52.6%	40.0%	0.0%	47.1%
6 Years	17.4%	6.3%	5.3%	40.0%	0.0%	12.5%
7 Years	4.3%	9.4%	0.0%	0.0%	0.0%	4.8%
8 Years	0.0%	0.0%	0.0%	0.0%	0.0%	0.0%
9 Years	2.2%	0.0%	0.0%	0.0%	0.0%	1.0%
10 Years	0.0%	0.0%	0.0%	0.0%	0.0%	0.0%
11 Years or More	4.3%	3.1%	21.1%	0.0%	0.0%	6.7%
Missing Data	0.0%	0.0%	0.0%	0.0%	0.0%	0.0%
Time to Degree for Transfers						
2 or Fewer Years	34.8%	21.9%	21.1%	20.0%	150.0%	29.8%
3 Years	43.5%	78.1%	100.0%	100.0%	50.0%	67.3%
4 Years	30.4%	25.0%	26.3%	20.0%	100.0%	28.8%
5 Years	17.4%	0.0%	10.5%	0.0%	0.0%	9.6%
6 Years	6.5%	3.1%	5.3%	0.0%	0.0%	4.8%
7 Years	0.0%	3.1%	0.0%	0.0%	0.0%	1.0%
8 Years	4.3%	0.0%	0.0%	0.0%	0.0%	1.9%
9 Years	2.2%	3.1%	5.3%	0.0%	0.0%	2.9%
10 Years or More	6.5%	3.1%	15.8%	20.0%	50.0%	8.7%
Missing Data	0.0%	0.0%	0.0%	0.0%	0.0%	0.0%
Graduating GPA (4 point scale)						
Mean	3.117	2.964	3.358	3.181	3.503	3.141
Std Dev	0.483	0.433	0.467	0.618	0.259	0.488

# 2004 Baccalaureate Recipients Profile



# 2004 Baccalaureate Recipients

## Profile, cont.



**Southern Illinois University Edwardsville**  
**Survey of 2004 Baccalaureate Graduates -- One Year Out**  
**Survey Responses -- Part I**  
*Employment Questions*

<b>School Detail</b>	<b>CAS</b>	<b>Bus</b>	<b>Educ</b>	<b>Engr</b>	<b>Nursing</b>	<b>Total</b>
Number of Survey Respondents *	114	77	54	13	11	269
1. Number Employed:						
Full-time	71.1%	84.4%	64.2%	76.9%	63.6%	73.5%
Part-time	15.8%	9.1%	20.8%	15.4%	36.4%	15.7%
Not, but Seeking	7.0%	3.9%	5.7%	0.0%	0.0%	5.2%
Not, not Seeking	6.1%	2.6%	9.4%	7.7%	0.0%	5.6%
Number Responding	114	77	53	13	11	268
<b>The remaining questions in Part I were to be answered only by respondents who were employed full-time or part-time.</b>						
	99	72	45	12	11	239
2. Place of Employment						
Illinois	73.1%	66.7%	75.0%	30.0%	63.6%	69.1%
Missouri	22.6%	26.1%	17.5%	30.0%	9.1%	22.4%
Other	4.3%	7.2%	7.5%	40.0%	27.3%	8.5%
Number Responding	93	69	40	10	11	223
3. Classification of Primary Employer						
Self-Employed or Private Practice	9.2%	5.6%	6.7%	8.3%	0.0%	7.1%
Business (Industrial, Commercial or Service)	35.7%	61.1%	13.3%	50.0%	0.0%	38.2%
Professional Firm (e.g., Engineering, Law)	5.1%	15.3%	2.2%	16.7%	0.0%	8.0%
College or University	6.1%	0.0%	8.9%	16.7%	0.0%	5.0%
Elementary/Secondary School	12.2%	0.0%	51.1%	0.0%	0.0%	14.7%
Health Agency (e.g. Hospital, Clinic)	7.1%	5.6%	4.4%	0.0%	90.9%	9.7%
Federal, State, or Local Government	12.2%	8.3%	4.4%	8.3%	9.1%	9.2%
Armed Services	2.0%	0.0%	0.0%	0.0%	0.0%	0.8%
NonProfit (Non-Government)	5.1%	2.8%	6.7%	0.0%	0.0%	4.2%
Other	5.1%	1.4%	2.2%	0.0%	0.0%	2.9%
Number Responding	98	72	45	12	11	238
4. Job Satisfaction						
Very Satisfied	30.3%	34.7%	46.7%	25.0%	45.5%	35.1%
Satisfied	30.3%	36.1%	22.2%	58.3%	27.3%	31.8%
Somewhat Satisfied	26.3%	16.7%	20.0%	16.7%	27.3%	21.8%
Somewhat Dissatisfied	3.0%	6.9%	8.9%	0.0%	0.0%	5.0%
Dissatisfied	7.1%	1.4%	0.0%	0.0%	0.0%	3.3%
Very Dissatisfied	3.0%	4.2%	2.2%	0.0%	0.0%	2.9%
Number Responding	99	72	45	12	11	239
5. Job in Field?						
Closely Related	33.3%	45.8%	51.1%	50.0%	81.8%	43.5%
Related	29.3%	31.9%	24.4%	41.7%	9.1%	28.9%
Unrelated (choice unknown)	3.0%	1.4%	0.0%	0.0%	0.0%	1.7%
Unrelated (by choice)	13.1%	8.3%	15.6%	8.3%	9.1%	11.7%
Unrelated (not by choice)	21.2%	12.5%	8.9%	0.0%	0.0%	14.2%
Number Responding	99	72	45	12	11	239
6. Timing of Securing First Job After Degree						
Held the Same Job While Enrolled	28.6%	38.0%	8.9%	25.0%	45.5%	28.3%
Secured Job by Graduation	20.4%	19.7%	17.8%	16.7%	36.4%	20.3%
Secured Job After Graduation(timing unknown)	0.0%	0.0%	0.0%	0.0%	0.0%	0.0%
Less than 1 Month After Graduation	4.1%	7.0%	11.1%	8.3%	9.1%	6.8%
1 to 3 Months After Graduation	15.3%	12.7%	17.8%	16.7%	9.1%	14.8%
3 to 6 Months After Graduation	17.3%	5.6%	26.7%	25.0%	0.0%	15.2%
6 to 9 Months After Graduation	8.2%	9.9%	15.6%	0.0%	0.0%	9.3%
More than 9 Months After Graduation	6.1%	7.0%	2.2%	8.3%	0.0%	5.5%
Number Responding	98	71	45	12	11	237

**Southern Illinois University Edwardsville**  
**Survey of 2004 Baccalaureate Graduates -- One Year Out**  
**Survey Responses -- Part I**  
*Employment Questions*

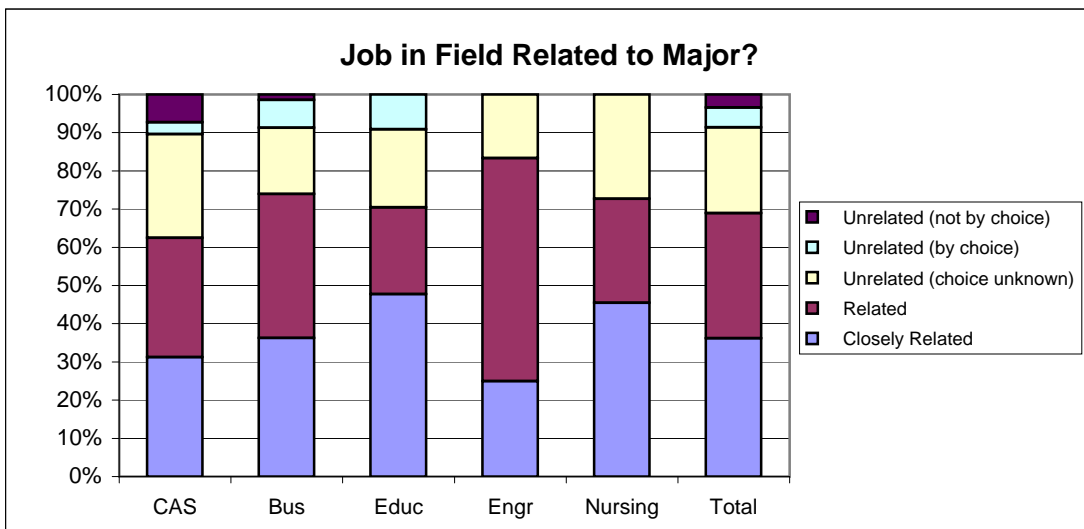
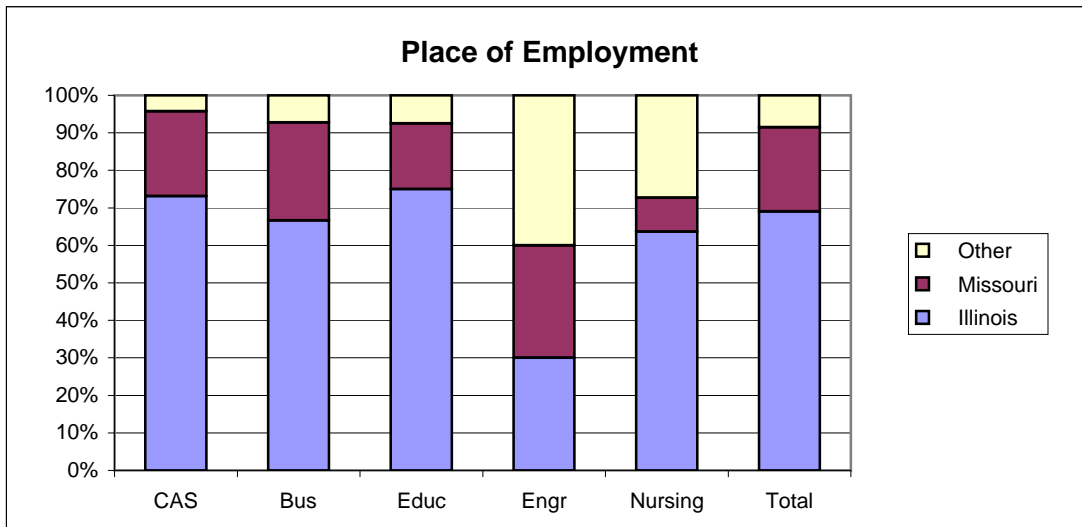
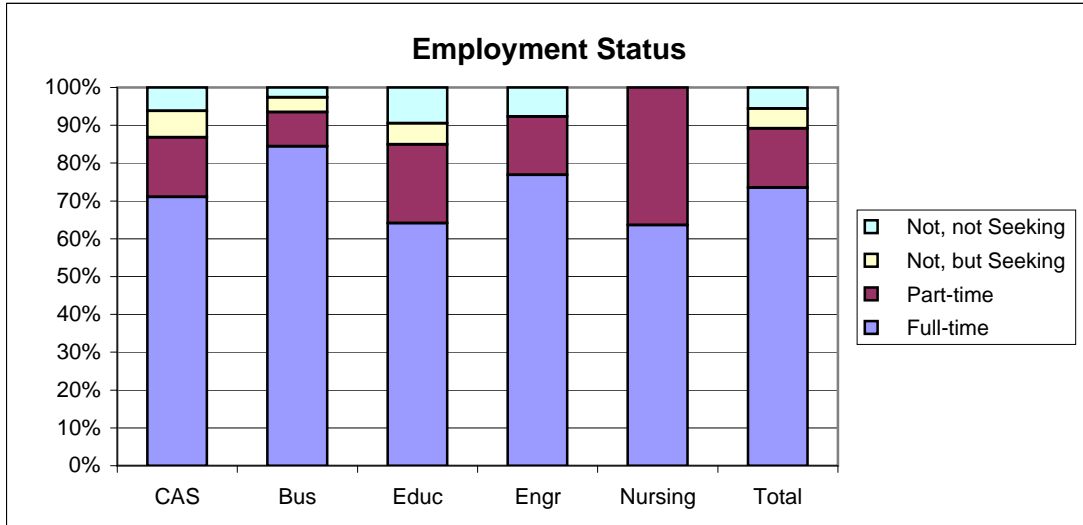
<b>School Detail, cont.</b>	<b>CAS</b>	<b>Bus</b>	<b>Educ</b>	<b>Engr</b>	<b>Nursing</b>	<b>Total</b>
<b>7. Annual Earned Income in Current Job Before Taxes</b>						
Employed Full-Time						
Less Than \$15,000	7.9%	1.6%	0.0%	0.0%	0.0%	3.8%
\$15,000 to 19,999	10.5%	1.6%	3.0%	0.0%	0.0%	5.4%
\$20,000 to \$24,999	13.2%	12.9%	6.1%	0.0%	0.0%	10.8%
\$25,000 to \$29,999	18.4%	16.1%	30.3%	0.0%	0.0%	18.3%
\$30,000 to \$34,999	26.3%	27.4%	51.5%	11.1%	33.3%	30.6%
\$35,000 to \$39,999	6.6%	9.7%	6.1%	11.1%	16.7%	8.1%
\$40,000 or More	17.1%	30.6%	3.0%	77.8%	50.0%	23.1%
Number Responding	76	62	33	9	6	186
Mean Salary	\$30,452	\$33,987	\$30,117	\$44,133	\$44,667	\$32,790
Employed Part-Time						
Less Than \$5,000	0.0%	0.0%	11.1%	DW	0.0%	3.1%
5,000 to \$9,999	14.3%	20.0%	22.2%	DW	0.0%	15.6%
\$10,000 to \$14,999	42.9%	20.0%	22.2%	DW	33.3%	31.3%
\$15,000 to \$19,999	28.6%	0.0%	33.3%	DW	33.3%	25.0%
\$20,000 or More	14.3%	60.0%	11.1%	DW	33.3%	25.0%
Number Responding	14	5	9	1	3	32
Mean Salary	\$13,771	\$26,201	\$13,200	\$20,000	\$25,333	\$11,677
<b>8. Bachelor's Degree Preparation for Job</b>						
Very Well	12.2%	8.5%	31.8%	8.3%	45.5%	16.1%
Well	24.5%	29.6%	36.4%	41.7%	27.3%	29.2%
Adequately	40.8%	47.9%	22.7%	41.7%	27.3%	39.0%
Inadequately	9.2%	11.3%	6.8%	8.3%	0.0%	8.9%
Poorly	6.1%	1.4%	0.0%	0.0%	0.0%	3.0%
Very Poorly	7.1%	1.4%	2.3%	0.0%	0.0%	3.8%
Number Responding	98	71	44	12	11	236
<b>9a. Primary Occupation</b>						
Management	4.7%	11.3%	2.2%	0.0%	9.1%	6.3%
Business Operations	5.9%	12.7%	2.2%	18.2%	0.0%	7.6%
Financial Specialists	4.7%	25.4%	2.2%	0.0%	0.0%	10.3%
Computer Specialists	3.5%	14.1%	0.0%	9.1%	0.0%	6.3%
Mathematical Scientists and Technicians	0.0%	0.0%	0.0%	0.0%	0.0%	0.0%
Architects, Surveyors, and Cartographers	2.4%	0.0%	0.0%	0.0%	0.0%	0.9%
Engineers and Related Technicians	0.0%	1.4%	0.0%	63.6%	0.0%	3.6%
Life & Physical Scientists, and Technicians	4.7%	0.0%	0.0%	0.0%	0.0%	1.8%
Social Scientists	0.0%	0.0%	4.4%	0.0%	0.0%	0.9%
Health: Doctors	0.0%	0.0%	0.0%	0.0%	0.0%	0.0%
Health: Registered Nurses	0.0%	2.8%	0.0%	0.0%	90.9%	5.4%
Health: Theratpists	0.0%	0.0%	0.0%	0.0%	0.0%	0.0%
Health: Oth Practitnrs, Prof.s, & Suppt Wkrs	3.5%	1.4%	0.0%	0.0%	0.0%	1.8%
Community & Social Service	9.4%	0.0%	8.9%	0.0%	0.0%	5.4%
Legal: Attorneys/Judges	0.0%	0.0%	0.0%	0.0%	0.0%	0.0%
Legal: Legal Support Workers	0.0%	0.0%	2.2%	0.0%	0.0%	0.4%
Education: Early Childhood Teachers	1.2%	0.0%	8.9%	0.0%	0.0%	2.2%
Education: Elementary School Teachers	2.4%	0.0%	6.7%	0.0%	0.0%	2.2%
Education: Middle School Teachers	1.2%	0.0%	4.4%	0.0%	0.0%	1.3%
Education: Secondary School Teachers	9.4%	0.0%	6.7%	0.0%	0.0%	4.9%
Education: Special Education Teachers	0.0%	0.0%	24.4%	0.0%	0.0%	4.9%
Education: Other, except Administrators	7.1%	0.0%	4.4%	9.1%	0.0%	4.0%
continued						

**Southern Illinois University Edwardsville**  
**Survey of 2004 Baccalaureate Graduates -- One Year Out**  
**Survey Responses -- Part I**  
*Employment Questions*

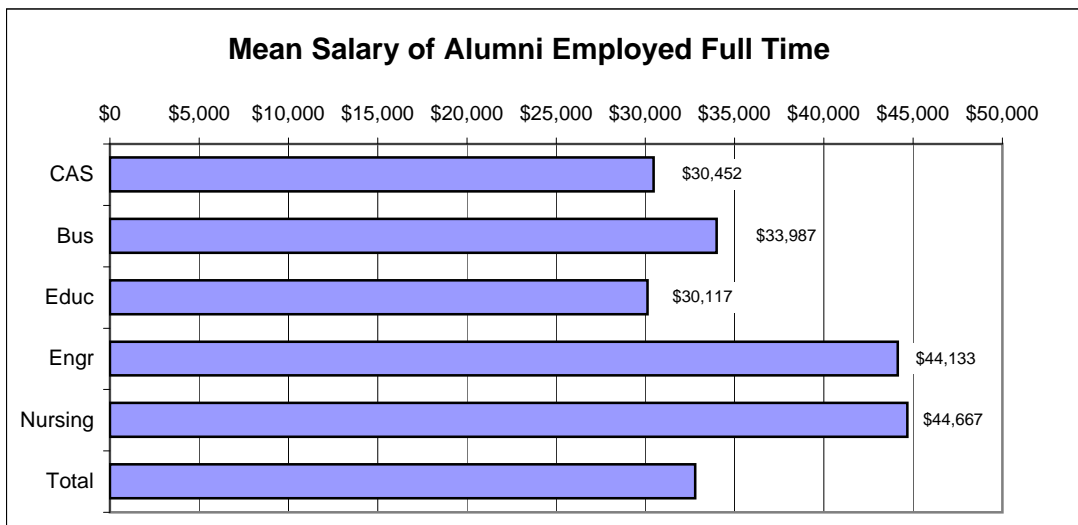
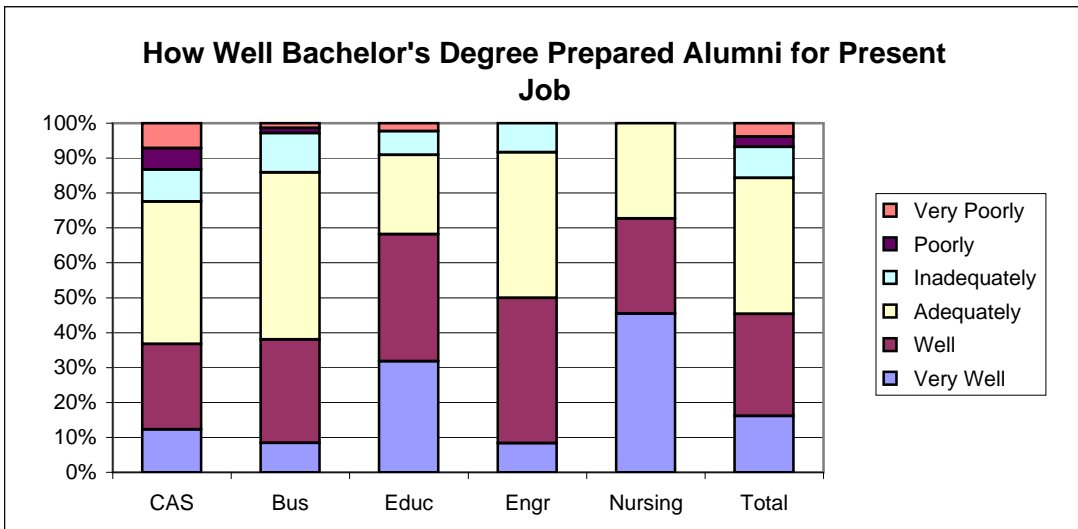
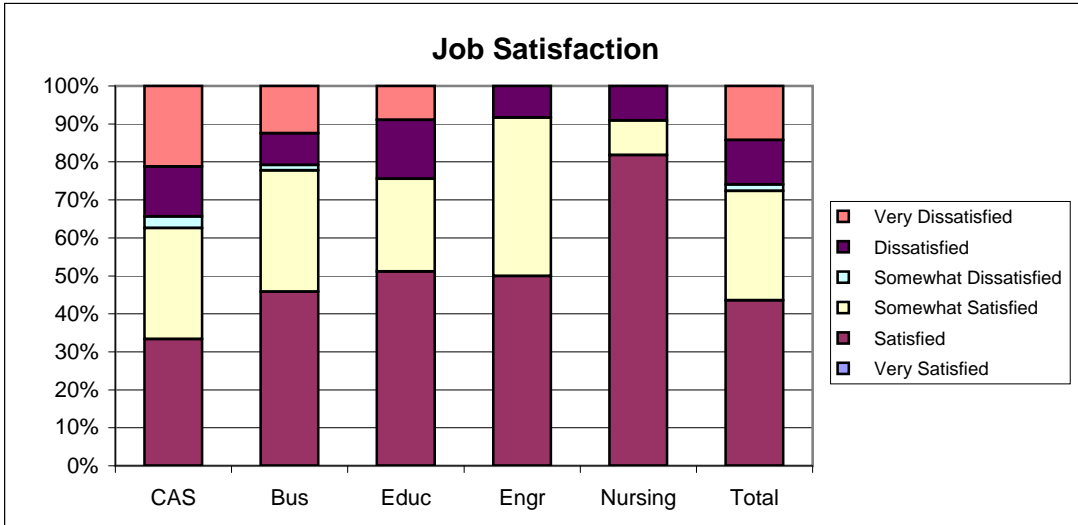
<b>School Detail, cont.</b>	<b>CAS</b>	<b>Bus</b>	<b>Educ</b>	<b>Engr</b>	<b>Nursing</b>	<b>Total</b>
9a. continuation of Primary Occupation						
Library Occupations	0.0%	0.0%	0.0%	0.0%	0.0%	0.0%
Art and Design Workers	0.0%	0.0%	0.0%	0.0%	0.0%	0.0%
Entertainment, Performers, Sports & Related	3.5%	0.0%	4.4%	0.0%	0.0%	2.2%
Media and Communication Workers	9.4%	0.0%	2.2%	0.0%	0.0%	4.0%
Sales	11.8%	9.9%	2.2%	0.0%	0.0%	8.1%
Office & Administration	8.2%	9.9%	4.4%	0.0%	0.0%	7.2%
Protective Services	2.4%	0.0%	0.0%	0.0%	0.0%	0.9%
Food Preparation & Serving	2.4%	1.4%	8.9%	0.0%	0.0%	3.1%
Buildings & Grounds Maintenance	0.0%	0.0%	0.0%	0.0%	0.0%	0.0%
Personal Care and Service	0.0%	1.4%	0.0%	0.0%	0.0%	0.4%
Farming, Fishing, and Forestry	1.2%	0.0%	0.0%	0.0%	0.0%	0.4%
Construction & Extractive	1.2%	1.4%	0.0%	0.0%	0.0%	0.9%
Installation, Maintenance, & Repair	0.0%	1.4%	0.0%	0.0%	0.0%	0.4%
Production	0.0%	1.4%	0.0%	0.0%	0.0%	0.4%
Transportation and Material Moving	0.0%	1.4%	0.0%	0.0%	0.0%	0.4%
Military	0.0%	2.8%	0.0%	0.0%	0.0%	0.9%
Number Responding	85	71	45	11	11	223
9b. Industry						
Agriculture, Forestry, and Fishing	1.7%	5.3%	0.0%	0.0%	0.0%	2.5%
Mining	0.0%	0.0%	0.0%	0.0%	0.0%	0.0%
Utilities	0.0%	1.8%	0.0%	0.0%	0.0%	0.6%
Construction	3.3%	3.5%	0.0%	22.2%	0.0%	3.7%
Manufacturing	6.7%	5.3%	2.9%	22.2%	0.0%	6.1%
Wholesale Trade	3.3%	1.8%	0.0%	0.0%	0.0%	1.8%
Retail Trade	6.7%	8.8%	2.9%	11.1%	0.0%	6.7%
Transportation	1.7%	1.8%	2.9%	11.1%	0.0%	2.5%
Information	3.3%	5.3%	0.0%	0.0%	0.0%	3.1%
Finance & Insurance	6.7%	19.3%	0.0%	11.1%	0.0%	9.8%
Real Estate & Rental & Leasing	3.3%	1.8%	0.0%	0.0%	0.0%	1.8%
Professional, Scientific & Technical Services	10.0%	14.0%	8.8%	11.1%	0.0%	11.0%
Management of Companies & Enterprises	3.3%	7.0%	0.0%	0.0%	0.0%	3.7%
Admin & Suppt, Waste Mgmt & Remedtn Svcs	0.0%	1.8%	0.0%	0.0%	0.0%	0.6%
Educational Services	20.0%	0.0%	50.0%	11.1%	0.0%	18.4%
Health Care & Social Assistance	3.3%	8.8%	5.9%	0.0%	100.0%	7.4%
Arts, Entertainment & Recreation	6.7%	0.0%	8.8%	0.0%	0.0%	4.3%
Accommodations & Food Services	1.7%	3.5%	5.9%	0.0%	0.0%	3.1%
Other Services (except Public Admin)	15.0%	7.0%	5.9%	0.0%	0.0%	9.2%
Public Administration	3.3%	3.5%	5.9%	0.0%	0.0%	3.7%
Number Responding	60	57	34	9	3	163

7/17/2006

## 2004 Baccalaureate Graduates One Year Out *Employment*



## 2004 Baccalaureate Graduates One Year Out Employment, cont.



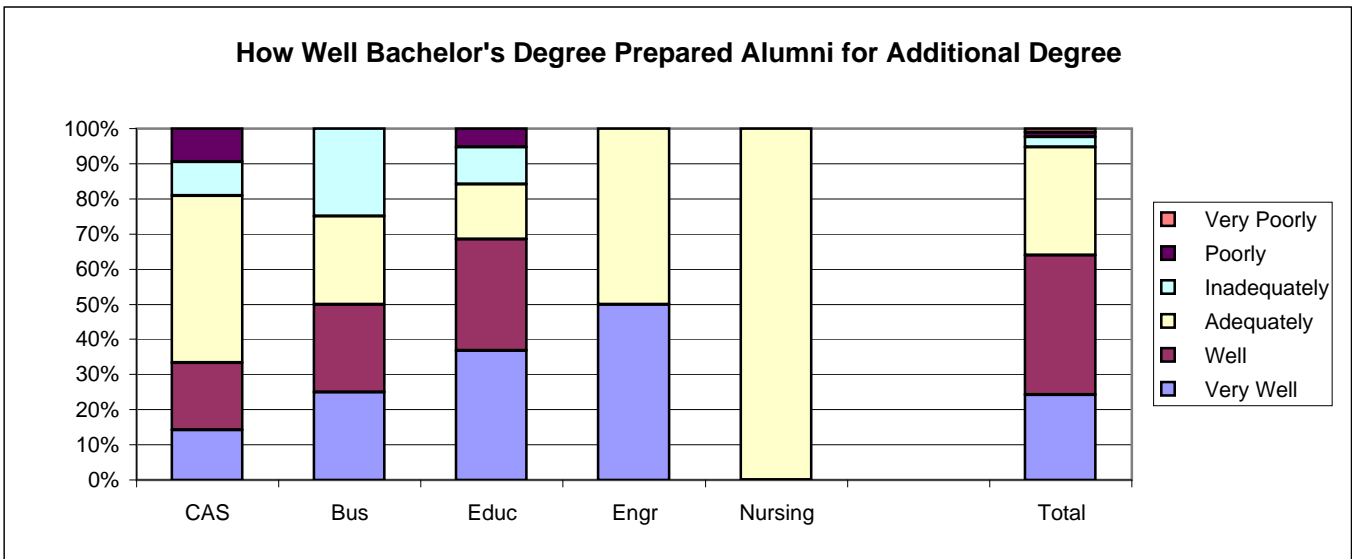
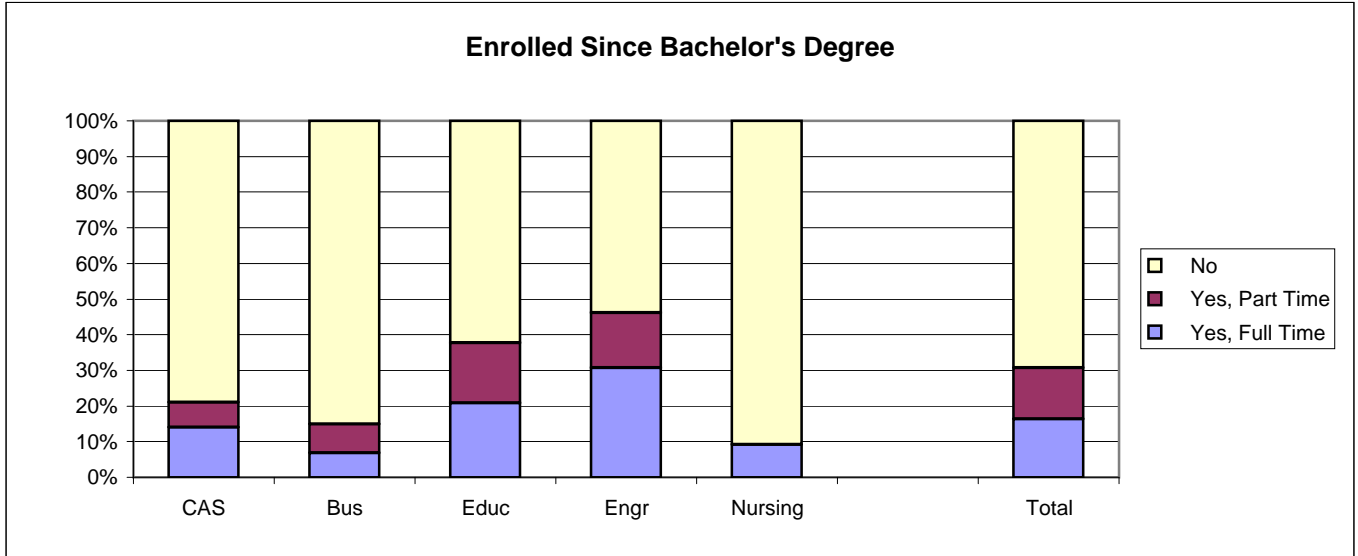


**Southern Illinois University Edwardsville**  
**Survey of 2004 Baccalaureate Graduates -- One Year Out**  
**Survey Responses -- Part II**  
*Education Questions*

<b>School Detail</b>	<b>CAS</b>	<b>Bus</b>	<b>Educ</b>	<b>Engr</b>	<b>Nursing</b>	<b>Total</b>
Number of Survey Respondents	114	77	54	13	11	269
10. Enrolled in College or University Since Degree?						
Yes, Full Time	14.0%	6.8%	20.8%	30.8%	9.1%	14.0%
Yes, Part Time	7.0%	8.1%	17.0%	15.4%	0.0%	9.4%
No	78.9%	85.1%	62.3%	53.8%	90.9%	76.6%
Number Responding	114	74	53	13	11	265
11. Pursuing or Have Completed an Additional Degree?						
Yes	53.7%	30.8%	67.9%	44.4%	50.0%	50.9%
No	46.3%	69.2%	32.1%	55.6%	50.0%	49.1%
Number Responding	41	26	28	9	2	106
<b>The remaining questions in Part II were to be answered only by respondents who were pursuing or had completed another degree.</b>						
	22	8	19	4	1	54
11b. Pursuing or Completed Which Degree?						
Associate's	4.5%	0.0%	0.0%	0.0%	0.0%	1.9%
Second Bachelor's	9.1%	0.0%	5.3%	0.0%	0.0%	5.6%
Academic Master's (MA, MS, MEd, etc)	45.5%	0.0%	42.1%	75.0%	0.0%	38.9%
Prof. Master's or Ed Specialist	27.3%	75.0%	42.1%	0.0%	100.0%	38.9%
Medicine (MD, OD)	0.0%	0.0%	0.0%	0.0%	0.0%	0.0%
Health Prof. (dentistry, pharmacy, etc.)	4.5%	0.0%	5.3%	0.0%	0.0%	3.7%
Theology/Divinity	0.0%	0.0%	0.0%	0.0%	0.0%	0.0%
Law (LLB, JD)	4.5%	12.5%	0.0%	25.0%	0.0%	5.6%
Doctorate (PhD, EdD, DA, DBA, etc.)	0.0%	0.0%	5.3%	0.0%	0.0%	1.9%
Other	4.5%	12.5%	0.0%	0.0%	0.0%	3.7%
Number Responding	22	8	19	4	1	54
12. How Well Bach. Degree Prepared You for Additional Degree						
Very Well	14.3%	25.0%	36.8%	50.0%	0.0%	26.4%
Well	19.0%	25.0%	31.6%	0.0%	0.0%	22.6%
Adequately	47.6%	25.0%	15.8%	50.0%	100.0%	34.0%
Inadequately	9.5%	25.0%	10.5%	0.0%	0.0%	11.3%
Poorly	9.5%	0.0%	5.3%	0.0%	0.0%	5.7%
Very Poorly	0.0%	0.0%	0.0%	0.0%	0.0%	0.0%
Number Responding	21	8	19	4	1	53

7/18/2006

## 2004 Baccalaureate Graduates One Year Out Additional Education

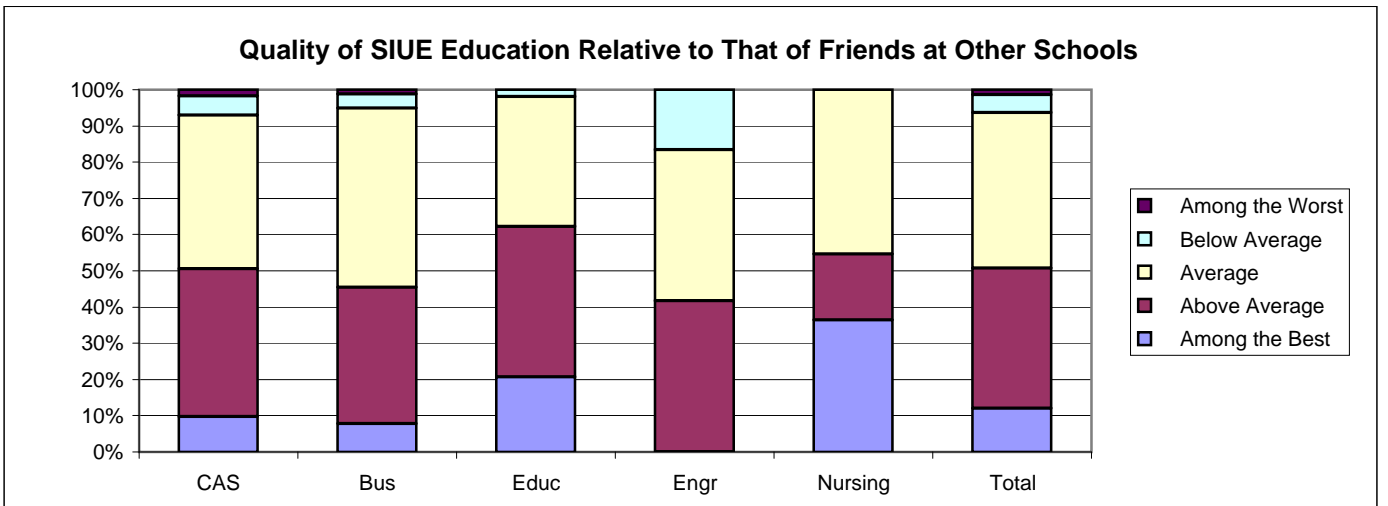
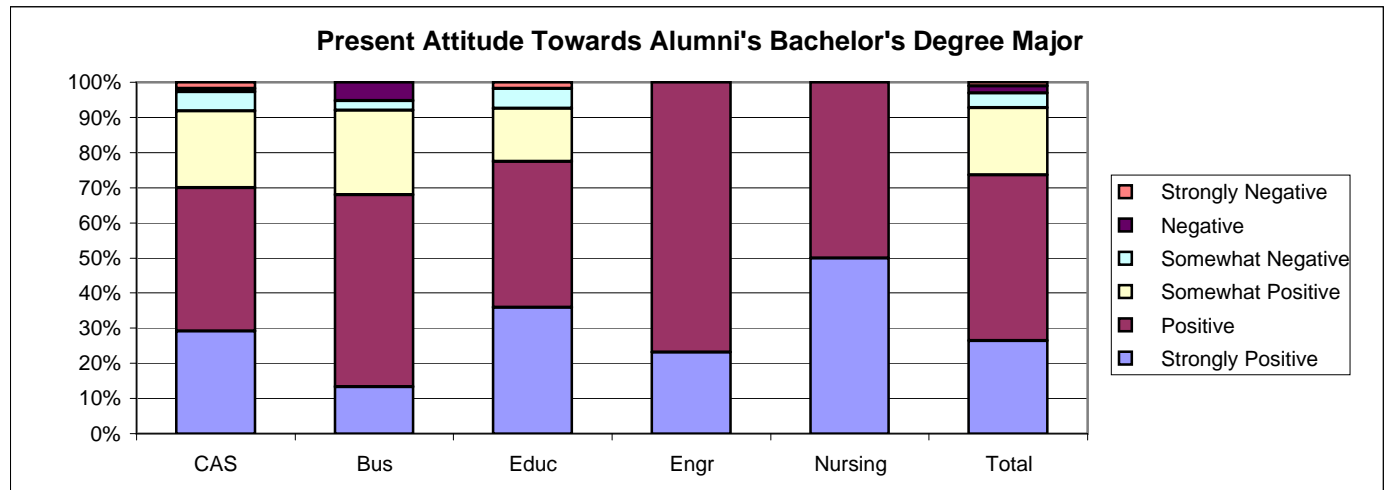
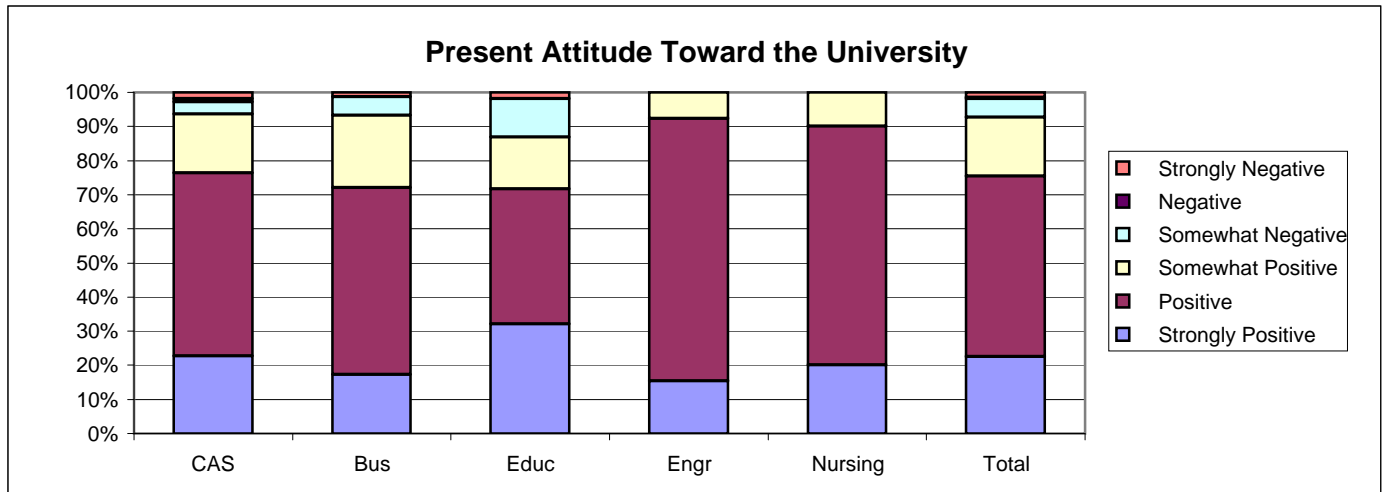


**Southern Illinois University Edwardsville**  
**Survey of 2004 Baccalaureate Graduates -- One Year Out**  
**Survey Responses -- Part III**  
*Satisfaction Questions*

<b>School Detail</b>	<b>CAS</b>	<b>Bus</b>	<b>Educ</b>	<b>Engr</b>	<b>Nursing</b>	<b>Total</b>
Number of Survey Respondents	114	77	54	13	11	269
<b>13. Present Attitude Towards the University</b>						
Strongly Positive	22.7%	17.3%	32.1%	15.4%	20.0%	22.6%
Positive	53.6%	54.7%	39.6%	76.9%	70.0%	52.9%
Somewhat Positive	17.3%	21.3%	15.1%	7.7%	10.0%	17.2%
Somewhat Negative	3.6%	5.3%	11.3%	0.0%	0.0%	5.4%
Negative	0.9%	0.0%	0.0%	0.0%	0.0%	0.4%
Strongly Negative	1.8%	1.3%	1.9%	0.0%	0.0%	1.5%
Number Responding	110	75	53	13	10	261
<b>14. Present Attitude Towards your Bachelor's Degree Major</b>						
Strongly Positive	29.1%	13.3%	35.8%	23.1%	50.0%	26.4%
Positive	40.9%	54.7%	41.5%	76.9%	50.0%	47.1%
Somewhat Positive	21.8%	24.0%	15.1%	0.0%	0.0%	19.2%
Somewhat Negative	5.5%	2.7%	5.7%	0.0%	0.0%	4.2%
Negative	0.9%	5.3%	0.0%	0.0%	0.0%	1.9%
Strongly Negative	1.8%	0.0%	1.9%	0.0%	0.0%	1.1%
Number Responding	110	75	53	13	10	261

7/18/2006

## 2004 Baccalaureate Graduates One Year Out Satisfaction



**Southern Illinois University Edwardsville**  
**Survey of 2004 Baccalaureate Graduates -- One Year Out**  
**Survey Responses -- Part IV**  
*Educational Practices Questions*

<b>School Detail</b>	<b>CAS</b>	<b>Bus</b>	<b>Educ</b>	<b>Engr</b>	<b>Nursing</b>	<b>Total</b>
Number of Survey Respondents	114	77	54	13	11	269
15. Faculty in Major Were Accessible Outside of Class						
Very Often	36.8%	16.9%	40.7%	41.7%	0.0%	30.6%
Often	46.5%	58.4%	40.7%	33.3%	81.8%	49.6%
Sometimes	14.9%	23.4%	18.5%	25.0%	18.2%	18.7%
Infrequently	0.9%	1.3%	0.0%	0.0%	0.0%	0.7%
Never	0.9%	0.0%	0.0%	0.0%	0.0%	0.4%
Number Responding	114	77	54	12	11	268
16. In Major, Student was Expected to Work Cooperatively with Other Students						
Very Often	28.9%	59.7%	48.1%	16.7%	36.4%	41.4%
Often	34.2%	35.1%	46.3%	75.0%	45.5%	39.2%
Sometimes	31.6%	3.9%	5.6%	8.3%	0.0%	16.0%
Infrequently	4.4%	1.3%	0.0%	0.0%	18.2%	3.0%
Never	0.9%	0.0%	0.0%	0.0%	0.0%	0.4%
Number Responding	114	77	54	12	11	268
17. In Major, Faculty Encouraged Student to Challenge Ideas (student's, other students, and in readings & materials)						
Very Often	34.2%	11.7%	29.6%	16.7%	45.5%	26.5%
Often	43.0%	37.7%	44.4%	25.0%	45.5%	41.0%
Sometimes	19.3%	41.6%	24.1%	50.0%	9.1%	27.6%
Infrequently	3.5%	6.5%	1.9%	8.3%	0.0%	4.1%
Never	0.0%	2.6%	0.0%	0.0%	0.0%	0.7%
Number Responding	114	77	54	12	11	268
18. In Major, Faculty Used Appropriate Teaching Activities to Help Student Learn						
Very Often	36.0%	20.8%	37.0%	33.3%	36.4%	31.7%
Often	53.5%	57.1%	50.0%	50.0%	54.5%	53.7%
Sometimes	8.8%	18.2%	13.0%	16.7%	9.1%	12.7%
Infrequently	0.9%	2.6%	0.0%	0.0%	0.0%	1.1%
Never	0.9%	1.3%	0.0%	0.0%	0.0%	0.7%
Number Responding	114	77	54	12	11	268
19. In Major, Faculty had High Expectations for Quality Of Student Work						
Very Often	37.7%	23.4%	46.3%	8.3%	45.5%	34.3%
Often	49.1%	59.7%	40.7%	66.7%	54.5%	51.5%
Sometimes	10.5%	14.3%	13.0%	16.7%	0.0%	11.9%
Infrequently	2.6%	1.3%	0.0%	8.3%	0.0%	1.9%
Never	0.0%	1.3%	0.0%	0.0%	0.0%	0.4%
Number Responding	114	77	54	12	11	268
20. In Major, Faculty Provided Timely Feedback						
Very Often	33.3%	16.9%	33.3%	25.0%	18.2%	27.6%
Often	54.4%	57.1%	48.1%	41.7%	72.7%	54.1%
Sometimes	11.4%	24.7%	18.5%	33.3%	9.1%	17.5%
Infrequently	0.9%	1.3%	0.0%	0.0%	0.0%	0.7%
Never	0.0%	0.0%	0.0%	0.0%	0.0%	0.0%
Number Responding	114	77	54	12	11	268

**Southern Illinois University Edwardsville**  
**Survey of 2004 Baccalaureate Graduates -- One Year Out**  
**Survey Responses -- Part IV**  
*Educational Practices Questions*

<b>School Detail, cont'd</b>	<b>CAS</b>	<b>Bus</b>	<b>Educ</b>	<b>Engr</b>	<b>Nursing</b>	<b>Total</b>
21. In Major, Faculty Encouraged Students' Questions and Discussion in Class						
Very Often	51.8%	36.4%	46.3%	33.3%	45.5%	45.1%
Often	39.5%	48.1%	50.0%	58.3%	54.5%	45.5%
Sometimes	8.8%	14.3%	1.9%	8.3%	0.0%	8.6%
Infrequently	0.0%	1.3%	1.9%	0.0%	0.0%	0.7%
Never	0.0%	0.0%	0.0%	0.0%	0.0%	0.0%
Number Responding	114	77	54	12	11	268
22. In Major, Student Spent Necessary Time and Energy to Come to Class Prepared						
Very Often	44.7%	26.0%	63.0%	41.7%	45.5%	42.9%
Often	44.7%	51.9%	31.5%	58.3%	54.5%	45.1%
Sometimes	9.6%	19.5%	3.7%	0.0%	0.0%	10.4%
Infrequently	0.9%	1.3%	1.9%	0.0%	0.0%	1.1%
Never	0.0%	1.3%	0.0%	0.0%	0.0%	0.4%
Number Responding	114	77	54	12	11	268

7/18/2006

**Southern Illinois University Edwardsville**  
**Survey of 2004 Baccalaureate Graduates -- One Year Out**  
**Survey Responses -- Part V**  
*Program Quality Questions*

<b>School Detail</b>	<b>CAS</b>	<b>Bus</b>	<b>Educ</b>	<b>Engr</b>	<b>Nursing</b>	<b>Total</b>
Number of Survey Respondents	114	77	54	13	11	269
23A. Quality of Major in Offering Sufficient Courses						
Excellent	25.4%	20.8%	33.3%	25.0%	45.5%	26.5%
Good	46.5%	66.2%	40.7%	66.7%	45.5%	51.9%
Fair	21.1%	11.7%	25.9%	8.3%	9.1%	18.3%
Poor	7.0%	1.3%	0.0%	0.0%	0.0%	3.4%
Number Responding	114	77	54	12	11	268
23B. Quality of Major in Offering Convenient Class Times						
Excellent	21.1%	23.4%	27.8%	8.3%	30.0%	22.8%
Good	41.2%	51.9%	42.6%	66.7%	60.0%	46.4%
Fair	31.6%	18.2%	24.1%	25.0%	10.0%	25.1%
Poor	6.1%	6.5%	5.6%	0.0%	0.0%	5.6%
Number Responding	114	77	54	12	10	267
23C. Quality of Major in Offering Logical Class Sequences						
Excellent	22.8%	16.9%	42.6%	25.0%	27.3%	25.4%
Good	52.6%	62.3%	33.3%	66.7%	63.6%	52.6%
Fair	20.2%	18.2%	20.4%	0.0%	9.1%	18.3%
Poor	4.4%	2.6%	3.7%	8.3%	0.0%	3.7%
Number Responding	114	77	54	12	11	268
24 Quality of Faculty in Major						
Excellent	53.5%	32.5%	50.0%	25.0%	63.6%	45.9%
Good	40.4%	54.5%	44.4%	75.0%	27.3%	46.3%
Fair	6.1%	10.4%	5.6%	0.0%	9.1%	7.1%
Poor	0.0%	2.6%	0.0%	0.0%	0.0%	0.7%
Number Responding	114	77	54	12	11	268
25 Grading Standards in Major Were:						
Too High	1.8%	1.3%	1.9%	0.0%	18.2%	2.2%
About Right	91.2%	90.9%	92.6%	91.7%	81.8%	91.0%
Too Low	7.1%	7.8%	5.6%	8.3%	0.0%	6.7%
Number Responding	113	77	54	12	11	267

7/18/2006

**Southern Illinois University Edwardsville**  
**Survey of 2004 Baccalaureate Graduates -- One Year Out**  
**Survey Responses -- Part VI**  
*Educational Effectiveness Questions*

<b>School Detail</b>	<b>CAS</b>	<b>Bus</b>	<b>Educ</b>	<b>Engr</b>	<b>Nursing</b>	<b>Total</b>
Number of Survey Respondents	114	77	54	13	11	269
<b>26. Helpfulness of University Experiences in:</b>						
<b>A. Developing Critical Thinking Ability</b>						
Extremely Helpful	13.2%	9.1%	25.9%	0.0%	27.3%	14.6%
Very Helpful	62.3%	48.1%	48.1%	75.0%	54.5%	55.6%
Moderately Helpful	20.2%	36.4%	24.1%	25.0%	18.2%	25.7%
Slightly Helpful	4.4%	6.5%	1.9%	0.0%	0.0%	4.1%
Not Helpful	0.0%	0.0%	0.0%	0.0%	0.0%	0.0%
Number Responding	114	77	54	12	11	268
<b>B. Developing Sense of Ethics</b>						
Extremely Helpful	18.4%	15.6%	20.4%	0.0%	36.4%	17.9%
Very Helpful	39.5%	35.1%	40.7%	8.3%	27.3%	36.6%
Moderately Helpful	26.3%	28.6%	27.8%	66.7%	27.3%	29.1%
Slightly Helpful	11.4%	16.9%	9.3%	8.3%	9.1%	12.3%
Not Helpful	4.4%	3.9%	1.9%	16.7%	0.0%	4.1%
Number Responding	114	77	54	12	11	270
<b>C. Understanding People with Different Backgrounds, Habits, Values, Appearances and Abilities</b>						
Extremely Helpful	30.7%	19.5%	35.2%	0.0%	45.5%	27.6%
Very Helpful	45.6%	37.7%	37.0%	50.0%	9.1%	40.3%
Moderately Helpful	18.4%	29.9%	22.2%	33.3%	27.3%	23.5%
Slightly Helpful	1.8%	9.1%	3.7%	16.7%	18.2%	5.6%
Not Helpful	3.5%	3.9%	1.9%	0.0%	0.0%	3.0%
Number Responding	114	77	54	12	11	270
<b>D. Becoming a More Active Citizen</b>						
Extremely Helpful	7.0%	3.9%	11.1%	0.0%	9.1%	6.7%
Very Helpful	25.4%	23.4%	33.3%	8.3%	27.3%	25.7%
Moderately Helpful	39.5%	41.6%	46.3%	33.3%	45.5%	41.4%
Slightly Helpful	21.1%	15.6%	7.4%	33.3%	18.2%	17.2%
Not Helpful	7.0%	15.6%	1.9%	25.0%	0.0%	9.0%
Number Responding	114	77	54	12	11	270
<b>E. Improving Quality of Life (aside from financial benefits)</b>						
Extremely Helpful	16.7%	13.0%	20.4%	0.0%	9.1%	15.3%
Very Helpful	31.6%	29.9%	46.3%	25.0%	27.3%	33.6%
Moderately Helpful	32.5%	36.4%	25.9%	66.7%	63.6%	35.1%
Slightly Helpful	14.0%	16.9%	3.7%	8.3%	0.0%	11.9%
Not Helpful	5.3%	3.9%	3.7%	0.0%	0.0%	4.1%
Number Responding	114	77	54	12	11	270
<b>F. Developing Reasoning Skills</b>						
Extremely Helpful	15.8%	13.0%	24.1%	8.3%	27.3%	16.8%
Very Helpful	56.1%	36.4%	48.1%	66.7%	27.3%	48.1%
Moderately Helpful	21.9%	40.3%	20.4%	16.7%	36.4%	27.2%
Slightly Helpful	5.3%	10.4%	7.4%	8.3%	9.1%	7.5%
Not Helpful	0.9%	0.0%	0.0%	0.0%	0.0%	0.4%
Number Responding	114	77	54	12	11	270



**Southern Illinois University Edwardsville**  
**Survey of 2004 Baccalaureate Graduates -- One Year Out**  
**Survey Responses -- Part VI**  
*Educational Effectiveness Questions*

<b>School Detail, cont.</b>	<b>CAS</b>	<b>Bus</b>	<b>Educ</b>	<b>Engr</b>	<b>Nursing</b>	<b>Total</b>
<b>G. Viewing Problems from Different Perspectives</b>						
Extremely Helpful	28.1%	13.0%	33.3%	8.3%	36.4%	24.3%
Very Helpful	44.7%	46.8%	48.1%	75.0%	54.5%	47.8%
Moderately Helpful	19.3%	31.2%	14.8%	16.7%	9.1%	21.3%
Slightly Helpful	6.1%	9.1%	3.7%	0.0%	0.0%	6.0%
Not Helpful	1.8%	0.0%	0.0%	0.0%	0.0%	0.7%
Number Responding	114	77	54	12	11	270
<b>H. Developing Ability to Solve Problems</b>						
Extremely Helpful	18.4%	13.0%	22.2%	25.0%	27.3%	18.3%
Very Helpful	52.6%	48.1%	50.0%	58.3%	45.5%	50.7%
Moderately Helpful	22.8%	33.8%	22.2%	16.7%	27.3%	25.7%
Slightly Helpful	4.4%	5.2%	5.6%	0.0%	0.0%	4.5%
Not Helpful	1.8%	0.0%	0.0%	0.0%	0.0%	0.7%
Number Responding	114	77	54	12	11	270
<b>I. Making Informed Decisions as a Citizen</b>						
Extremely Helpful	18.4%	13.0%	13.0%	0.0%	9.1%	14.6%
Very Helpful	44.7%	31.2%	46.3%	41.7%	45.5%	41.0%
Moderately Helpful	27.2%	36.4%	29.6%	41.7%	36.4%	31.3%
Slightly Helpful	5.3%	15.6%	9.3%	8.3%	9.1%	9.3%
Not Helpful	4.4%	3.9%	1.9%	8.3%	0.0%	3.7%
Number Responding	114	77	54	12	11	270
<b>J. Developing Writing Skills</b>						
Extremely Helpful	24.6%	16.9%	22.6%	0.0%	18.2%	20.6%
Very Helpful	47.4%	40.3%	39.6%	25.0%	54.5%	43.1%
Moderately Helpful	18.4%	29.9%	26.4%	41.7%	18.2%	24.3%
Slightly Helpful	5.3%	9.1%	9.4%	33.3%	9.1%	8.6%
Not Helpful	4.4%	3.9%	1.9%	0.0%	0.0%	3.4%
Number Responding	114	77	53	12	11	269
<b>K. Developing Oral Communication Skills</b>						
Extremely Helpful	29.8%	19.5%	24.1%	25.0%	18.2%	25.0%
Very Helpful	43.9%	45.5%	44.4%	25.0%	45.5%	43.7%
Moderately Helpful	21.1%	24.7%	20.4%	41.7%	36.4%	23.5%
Slightly Helpful	3.5%	7.8%	11.1%	8.3%	0.0%	6.3%
Not Helpful	1.8%	2.6%	0.0%	0.0%	0.0%	1.5%
Number Responding	114	77	54	12	11	270
<b>L. Developing Knowledge of Scientific and Technological Developments</b>						
Extremely Helpful	14.9%	6.5%	24.1%	16.7%	45.5%	15.7%
Very Helpful	35.1%	44.2%	31.5%	50.0%	27.3%	37.3%
Moderately Helpful	29.8%	39.0%	38.9%	33.3%	27.3%	34.3%
Slightly Helpful	14.0%	7.8%	5.6%	0.0%	0.0%	9.3%
Not Helpful	6.1%	2.6%	0.0%	0.0%	0.0%	3.4%
Number Responding	114	77	54	12	11	270

**Southern Illinois University Edwardsville**  
**Survey of 2004 Baccalaureate Graduates -- One Year Out**  
**Survey Responses -- Part VI**  
*Educational Effectiveness Questions*

<b>School Detail, cont.</b>	<b>CAS</b>	<b>Bus</b>	<b>Educ</b>	<b>Engr</b>	<b>Nursing</b>	<b>Total</b>
<b>27. Undergraduate Education Broadened Interest Beyond Subjects in Major</b>						
Strongly Agree	23.7%	10.4%	25.9%	8.3%	9.1%	19.0%
Agree	57.0%	59.7%	51.9%	50.0%	54.5%	56.3%
Neutral	14.9%	18.2%	20.4%	25.0%	18.2%	17.5%
Disagree	3.5%	9.1%	0.0%	16.7%	18.2%	5.6%
Strongly Disagree	0.9%	2.6%	1.9%	0.0%	0.0%	1.5%
Number Responding	114	77	54	12	11	270
<b>28. Importance of College Education to:</b>						
<b>A. Personal Life</b>						
Very Important	57.0%	62.3%	66.7%	16.7%	63.6%	59.0%
Moderately Important	24.6%	26.0%	22.2%	66.7%	27.3%	26.5%
Slightly Important	12.3%	6.5%	11.1%	16.7%	9.1%	10.4%
Not Important	6.1%	5.2%	0.0%	0.0%	0.0%	4.1%
Number Responding	114	77	54	12	11	270
<b>B. Community Life</b>						
Very Important	23.7%	29.9%	40.7%	0.0%	18.2%	27.6%
Moderately Important	43.0%	39.0%	35.2%	41.7%	36.4%	39.9%
Slightly Important	24.6%	20.8%	18.5%	41.7%	45.5%	23.9%
Not Important	8.8%	10.4%	5.6%	16.7%	0.0%	8.6%
Number Responding	114	77	54	12	11	270
<b>C. Professional Life</b>						
Very Important	57.9%	70.1%	74.1%	83.3%	63.6%	66.0%
Moderately Important	25.4%	20.8%	14.8%	8.3%	27.3%	21.3%
Slightly Important	11.4%	6.5%	5.6%	8.3%	0.0%	8.2%
Not Important	5.3%	2.6%	5.6%	0.0%	9.1%	4.5%
Number Responding	114	77	54	12	11	270
<b>29. Quality of SIUE Education Relative to That of Friends at Other Schools</b>						
Among the Best	9.7%	7.8%	20.8%	0.0%	36.4%	12.0%
Above Average	40.7%	37.7%	41.5%	41.7%	18.2%	39.1%
Average	42.5%	49.4%	35.8%	41.7%	45.5%	43.2%
Below Average	5.3%	3.9%	1.9%	16.7%	0.0%	4.5%
Among the Worst	1.8%	1.3%	0.0%	0.0%	0.0%	1.1%
Number Responding	113	77	53	12	11	268
<b>30. Involvement Since Bachelor's Degree with:</b>						
<b>A. Organized, Formal, Career Related Learning (non-degree)</b>						
Currently Involved	28.3%	16.9%	42.6%	41.7%	36.4%	28.8%
Have Been Involved	29.2%	46.8%	37.0%	25.0%	45.5%	36.3%
Never Involved	42.5%	36.4%	20.4%	33.3%	18.2%	34.8%
Number Responding	113	77	54	12	11	269
<b>B. Personal Enrichment Studies</b>						
Currently Involved	21.2%	11.7%	22.2%	58.3%	9.1%	19.9%
Have Been Involved	38.1%	18.2%	38.9%	16.7%	54.5%	32.2%
Never Involved	40.7%	70.1%	38.9%	25.0%	36.4%	47.9%
Number Responding	113	77	54	12	11	269

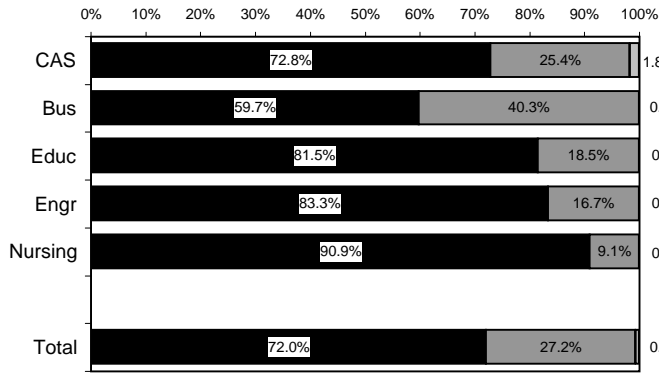
**Southern Illinois University Edwardsville**  
**Survey of 2004 Baccalaureate Graduates -- One Year Out**  
**Survey Responses -- Part VI**  
*Educational Effectiveness Questions*

<b>School Detail, cont.</b>	<b>CAS</b>	<b>Bus</b>	<b>Educ</b>	<b>Engr</b>	<b>Nursing</b>	<b>Total</b>
<b>C. Professional Activities or Organizations</b>						
Currently Involved	36.3%	26.0%	44.4%	33.3%	9.1%	33.7%
Have Been Involved	33.6%	32.5%	27.8%	25.0%	63.6%	33.0%
Never Involved	30.1%	41.6%	27.8%	41.7%	27.3%	33.3%
Number Responding	113	77	54	12	11	269
<b>D. Volunteer Work / Community Svc Activities or Organizations</b>						
Currently Involved	24.1%	20.8%	20.4%	16.7%	27.3%	22.2%
Have Been Involved	36.6%	29.9%	51.9%	41.7%	45.5%	38.3%
Never Involved	39.3%	49.4%	27.8%	41.7%	27.3%	39.5%
Number Responding	112	77	54	12	11	267
<b>E. Social / Recreational Activities or Organizations</b>						
Currently Involved	31.0%	31.2%	35.2%	25.0%	27.3%	31.5%
Have Been Involved	38.1%	33.8%	46.3%	41.7%	54.5%	39.3%
Never Involved	31.0%	35.1%	18.5%	33.3%	18.2%	29.2%
Number Responding	113	77	54	12	11	268
<b>F. Political Activities or Organizations</b>						
Currently Involved	9.7%	5.2%	7.4%	8.3%	0.0%	7.5%
Have Been Involved	20.4%	13.0%	27.8%	16.7%	9.1%	19.1%
Never Involved	69.9%	81.8%	64.8%	75.0%	90.9%	73.4%
Number Responding	113	77	54	12	11	268
<b>G. Religious / Ethical Activities or Organizations</b>						
Currently Involved	30.1%	13.0%	32.1%	41.7%	27.3%	25.9%
Have Been Involved	20.4%	32.5%	32.1%	8.3%	36.4%	26.3%
Never Involved	49.6%	54.5%	35.8%	50.0%	36.4%	47.7%
Number Responding	113	77	53	12	11	267
<b>H. Support or Participation in the Arts (music, drama, dance, art)</b>						
Currently Involved	26.5%	9.1%	20.4%	16.7%	18.2%	19.5%
Have Been Involved	35.4%	32.5%	33.3%	16.7%	45.5%	33.7%
Never Involved	38.1%	58.4%	46.3%	66.7%	36.4%	46.8%
Number Responding	113	77	54	12	11	268
<b>I. Reading books not directly related to your job</b>						
Currently Involved	68.8%	49.4%	63.0%	66.7%	72.7%	62.0%
Have Been Involved	22.3%	39.0%	25.9%	25.0%	18.2%	27.8%
Never Involved	8.9%	11.7%	11.1%	8.3%	9.1%	10.2%
Number Responding	112	77	54	12	11	267

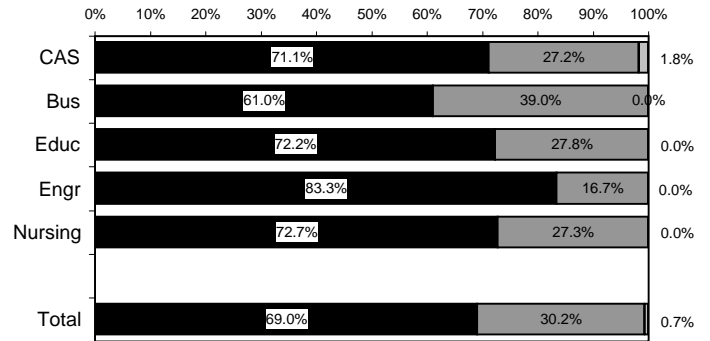
# Helpfulness of University Experiences in:

Very to Extremely Helpful
  Slightly to Moderately Helpful
  Not Helpful

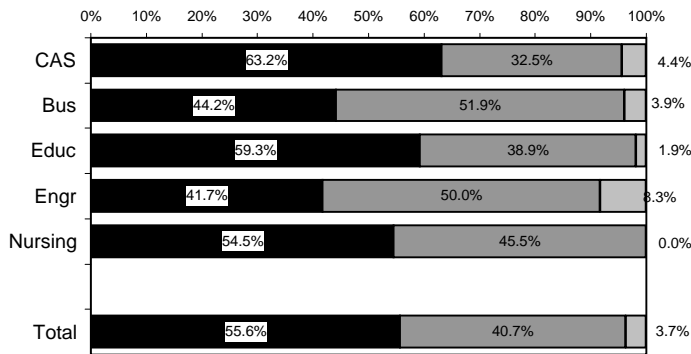
### Viewing Problems from Different Perspectives



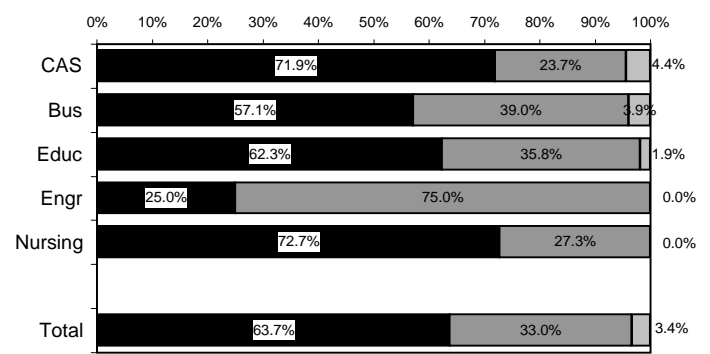
### Developing Ability to Solve Problems



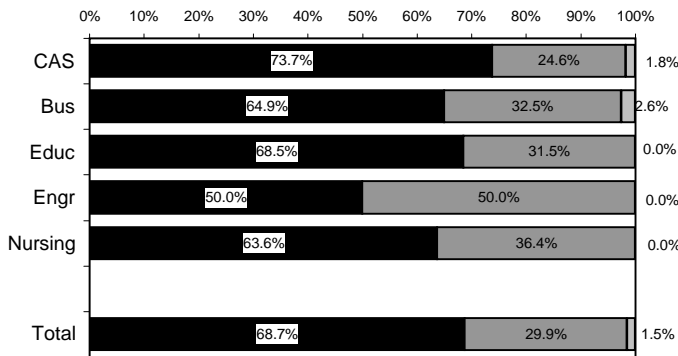
### Making Informed Decisions as a Citizen



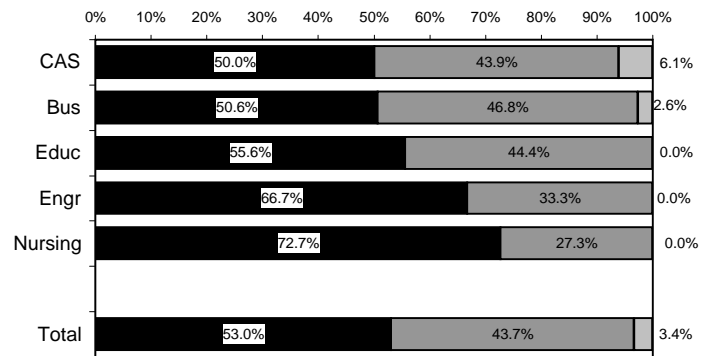
### Developing Writing Skills



### Developing Oral Communication Skills



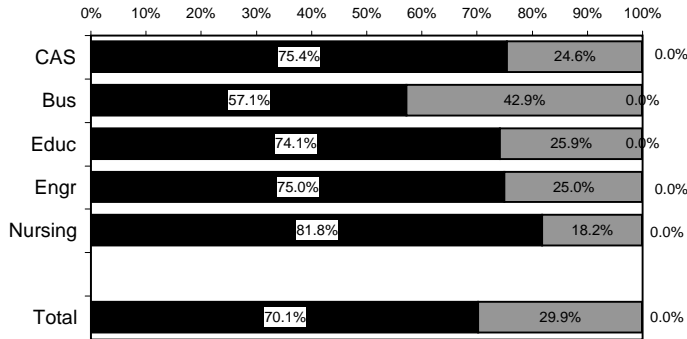
### Developing Knowledge of Scientific and Technological Developments



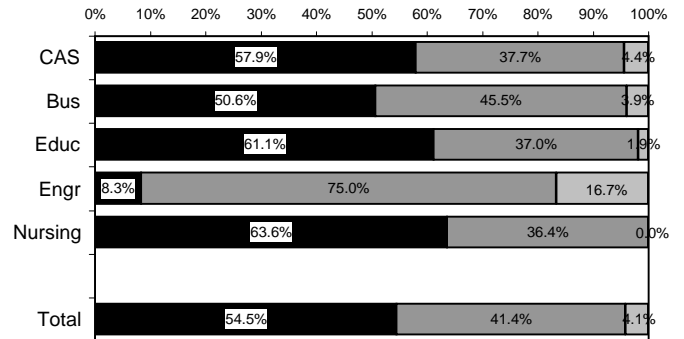
# Helpfulness of University Experiences in:

Very to Extremely Helpful
  Slightly to Moderately Helpful
  Not Helpful

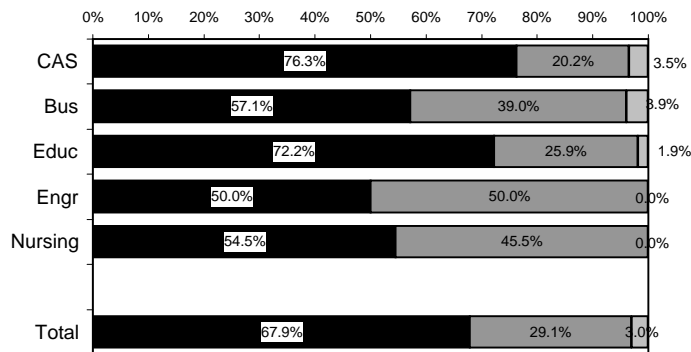
## Developing Critical Thinking Ability



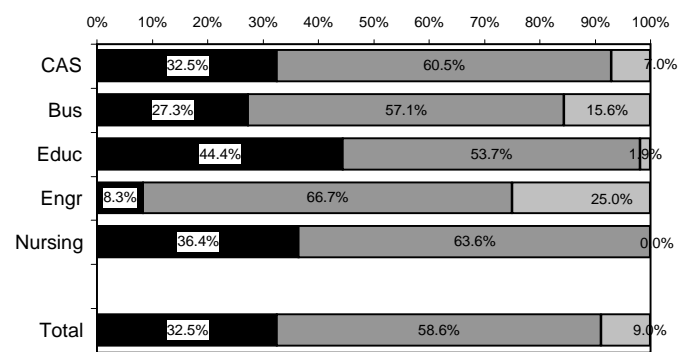
## Developing Sense of Ethics



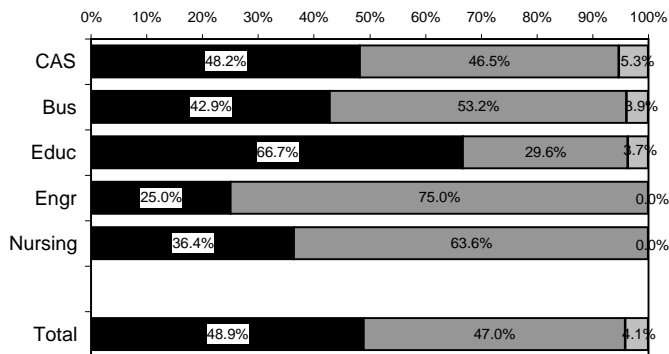
## Understanding People with Different Backgrounds



## Becoming a More Active Citizen



## Improving Quality of Life (aside from financial benefits)



## Developing Reasoning Skills

