

**Southern Illinois University at Edwardsville**  
**Survey of 2002 Baccalaureate Graduates -- One Year Out**

*Survey Results for Schools*

July 2004

Survey Administered By  
The Office of Undergraduate Assessment and Program Review

Survey Results Compiled By  
The Office of Institutional Research and Studies

# Southern Illinois University at Edwardsville

## Survey of 2002 Baccalaureate Graduates -- One Year Out

### Contents

#### Introduction

#### Methodology

#### Survey Population and Respondents

- Charts: *2002 Baccalaureate Recipients, Profile*
- *Gender*
  - *Race/Ethnic*
  - *Age at Graduation*
  - *Matriculation Status*
  - *Time to Degree for New Freshmen*
  - *Time to Degree for New Transfers*

Table: *Comparison of All Graduates to Survey Respondents*

#### Survey Results

- Charts: *2002 Baccalaureate Graduates One Year Out, Satisfaction*
- *Present Attitude Toward the University*
  - *Present Attitude Towards Alumni's Bachelor's Degree Major*
  - *Quality of SIUE Education Relative to That of Friends at Other Schools*

- 2002 Baccalaureate Graduates One Year Out, Additional Education*
- *Enrolled Since Bachelors Degree*
  - *How Well Bachelor's Degree Prepared Alumni for Additional Degree*

- 2002 Baccalaureate Graduates One Year Out, Employment*
- *Employment Status*
  - *Place of Employment*
  - *Job in Field Related to Major?*
  - *Job Satisfaction*
  - *How Well Bachelor's Degree Program Prepared Alumni for Present Job*
  - *Mean Salary of Alumni Employed Full Time*

- Helpfulness of University Experiences in:*
- *Developing Critical Thinking Ability*
  - *Developing Sense of Ethics*
  - *Understanding People with Different Backgrounds*
  - *Becoming a more Active Citizen*
  - *Improving Quality of Life (aside from financial benefits)*
  - *Developing Reasoning Skills*
  - *Viewing Problems from Different Perspectives*
  - *Developing Ability to Solve Problems*
  - *Making Informed Decisions as a Citizen*
  - *Developing Writing Skills*

- *Developing Oral Communication Skills*
- *Developing Knowledge of Scientific and Technological Developments*

Tables:	<i>Part I</i>	<i>Employment Questions</i>
	<i>Part II</i>	<i>Education Questions</i>
	<i>Part III</i>	<i>Satisfaction Questions</i>
	<i>Part IV</i>	<i>Educational Practices Questions</i>
	<i>Part V</i>	<i>Program Quality Questions</i>
	<i>Part VI</i>	<i>Educational Effectiveness Questions</i>

## **Questionnaire**

## Southern Illinois University Edwardsville Survey of 2002 Baccalaureate Graduates -- One Year Out

### Introduction

This one-year out baccalaureate survey was done to provide data for the University's undergraduate program reviews and other planning uses, and to participate in the Illinois Board of Higher Education Baccalaureate Graduates' Follow-up System.

<b>IBHE Survey Schedule and Population Definition</b>		
Survey Year	Survey Type	Survey Group
1992	One-Year Out Survey	Class of '91
1993	Five-Year Out Survey	Class of '88
1994	Ten-Year Out Survey	Class of '84
1995	One-Year Out Survey	Class of '94
1996	Five-Year Out Survey	Class of '91
1997	Nine-Year Out Survey	Class of '88
1998	One-Year Out Survey	Class of '97
1999	Five-Year Out Survey	Class of '94
2000	Nine-Year Out Survey	Class of '91
2001	One-Year Out Survey	Class of '00
2002	Five-Year Out Survey	Class of '97
2003	Nine-Year Out Survey	Class of '94

After the first six years, the surveys were reviewed and changed, modifying some questions and value scales, and adding some additional questions.

The current survey was administered during the spring and summer of 2003 to calendar year 2002 baccalaureate graduates of SIUE. The questionnaire includes 18 questions common to all Illinois public universities. These are the first 18 questions in the survey, forming Parts I, II, III, and the beginning of Part IV (Employment Questions, Education Questions, Satisfaction Questions, and Educational Practices Questions). SIUE added to these one question on industry of employment and three additional questions on educational practices, and appended two additional parts to the survey to add questions about program quality, and educational effectiveness. A questionnaire is included following the results.

### Methodology

The survey questionnaire and a cover letter were adapted from the questionnaire and letter developed for previous surveys. SIUE Alumni Services provided current addresses for calendar year 2002 graduates as determined from institutional records. The survey was distributed in May 2003 to May 2002 baccalaureate graduates and in August 2003 to August 2002 and December 2002 baccalaureate graduates. Each envelope included a cover letter, a questionnaire, and a postage-paid, pre-addressed return envelope. Each questionnaire was stamped with a sequential, identifying number which was also stamped on a listing of the graduates (this aided in identifying the surveys when returned).

On April 21, 2003 approximately two weeks before the first set of surveys were to be mailed, a

postcard was sent to the 947 May 2002 baccalaureate graduates for whom addresses were available, notifying the alumni that they would be receiving a questionnaire and encouraging them to complete and return the survey. Surveys were mailed first class on May 5, 2003. On May 19<sup>th</sup>, approximately three weeks after the survey was mailed and when the rate of survey returns had decreased, a follow-up postcard requesting that the survey be returned was mailed to each student who had not returned his or her survey. On June 2<sup>nd</sup> a second wave mailing of the surveys was sent to the 715 remaining non-respondents.

The second distribution began with the preliminary postcard mailed on July 28, 2003 to the 770 August and December 2002 baccalaureate graduates with known addresses. Surveys were mailed first class to this group on August 11, 2003 with a follow-up post card mailed to non-responders on August 25, 2003. A second wave mailing of the survey was sent to 642 non-responders on September 8, 2003.

Returned surveys began arriving on April 23<sup>rd</sup> and continued through the summer and fall, with a few arriving as late as January 2004. As the surveys came in, each was matched with the corresponding stamped listing. The students' names were then checked against the alphabetic list of alumni to verify (or, if the alumnus chose not to provide the identification number, to obtain) the student identification number. The student identification number was the key which allowed merging of survey data with administrative records (e.g., biographic, graduation, matriculation, and enrollment information).

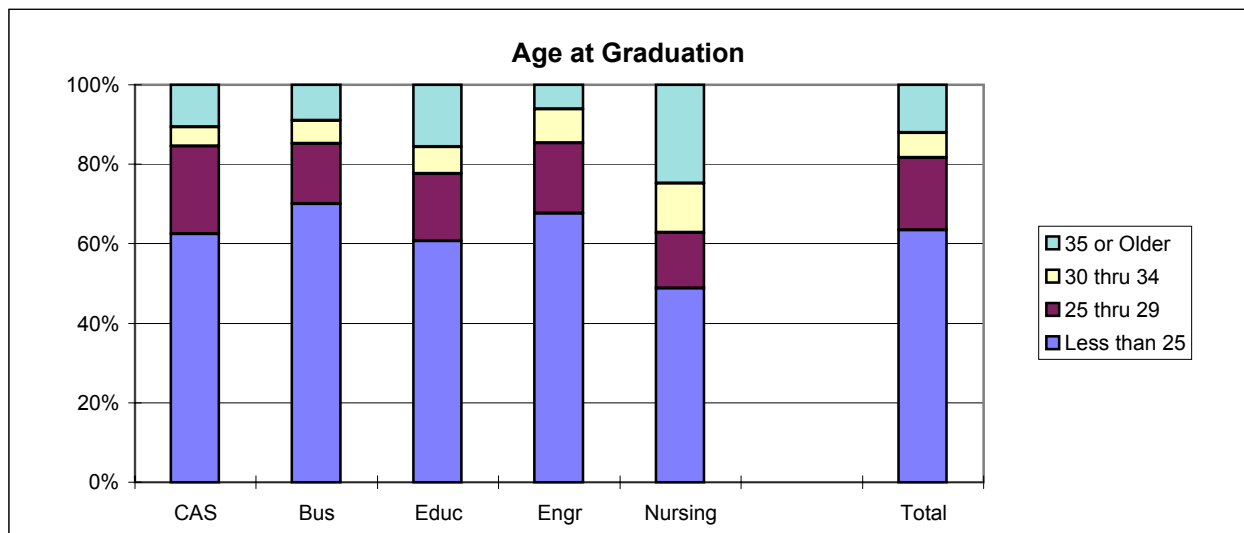
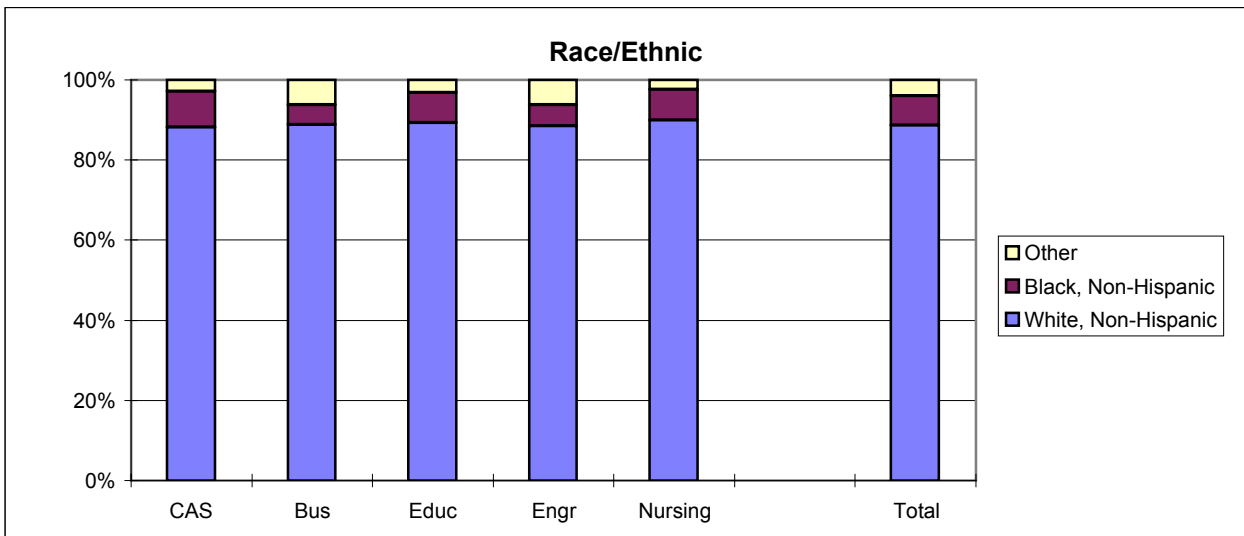
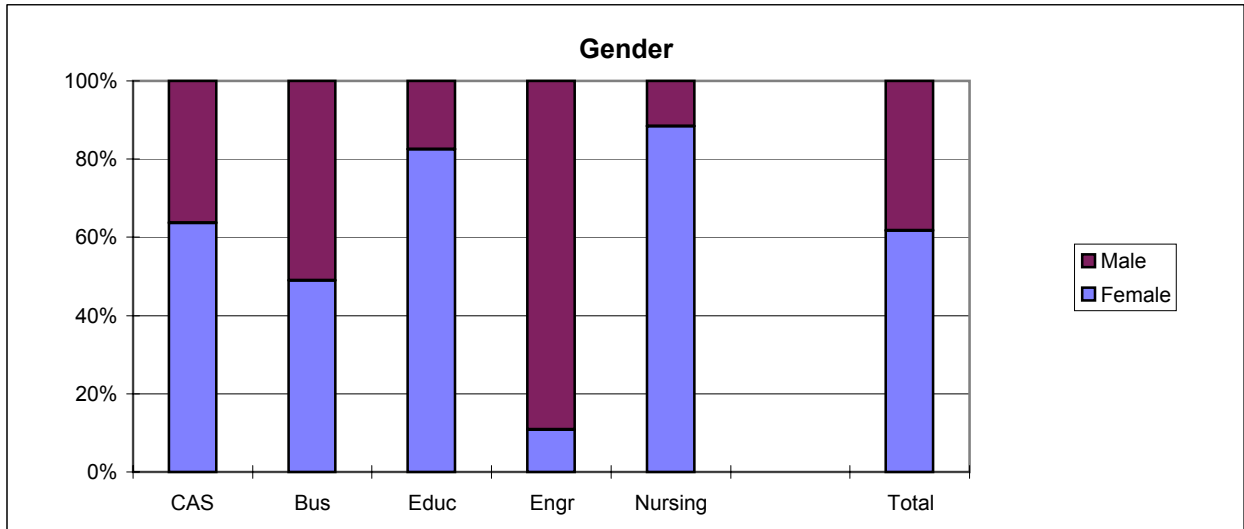
**Southern Illinois University Edwardsville  
Survey of 2002 Baccalaureate Graduates -- One Year Out**

*Survey Population and Respondents*

	Number of Graduates
2002 Baccalaureate Degrees	1,722
Less persons who received 2 baccalaureate degrees	12
2001 Baccalaureate Graduates	1,710
Less Graduates with No Address Available *	4
Graduates Surveyed	1,706
Less Non-Deliverable Surveys	57
Less Non-Responding Graduates	1,004
Survey Respondents	645
Gross Response Rate (Respondents/Total Surveyed)	37.81%
Adjusted Response Rate (Respondents/Delivered Surveys)	39.11%

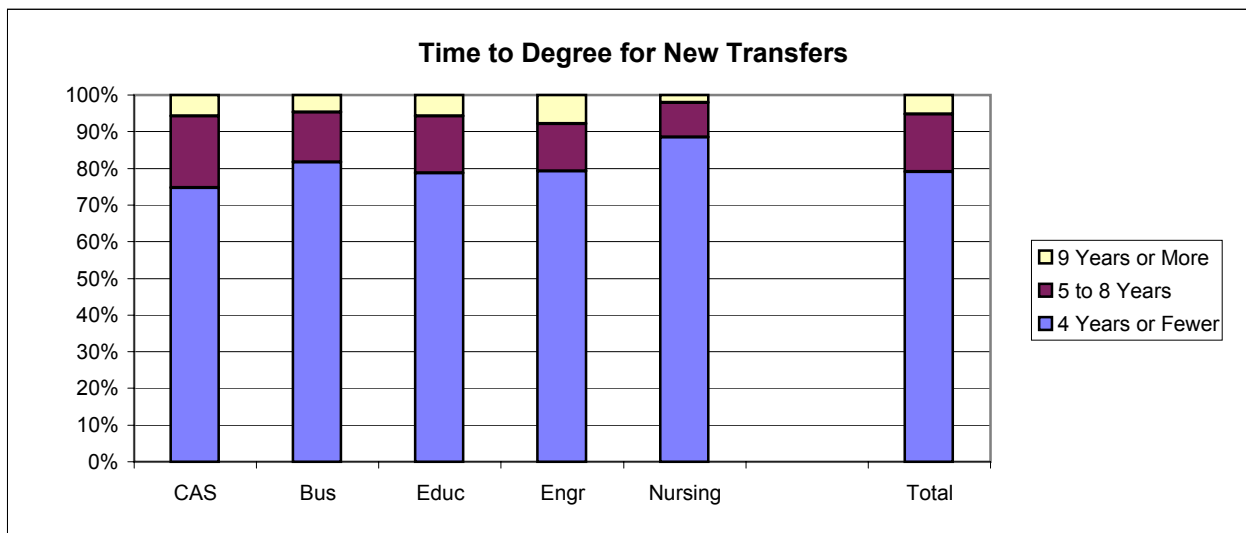
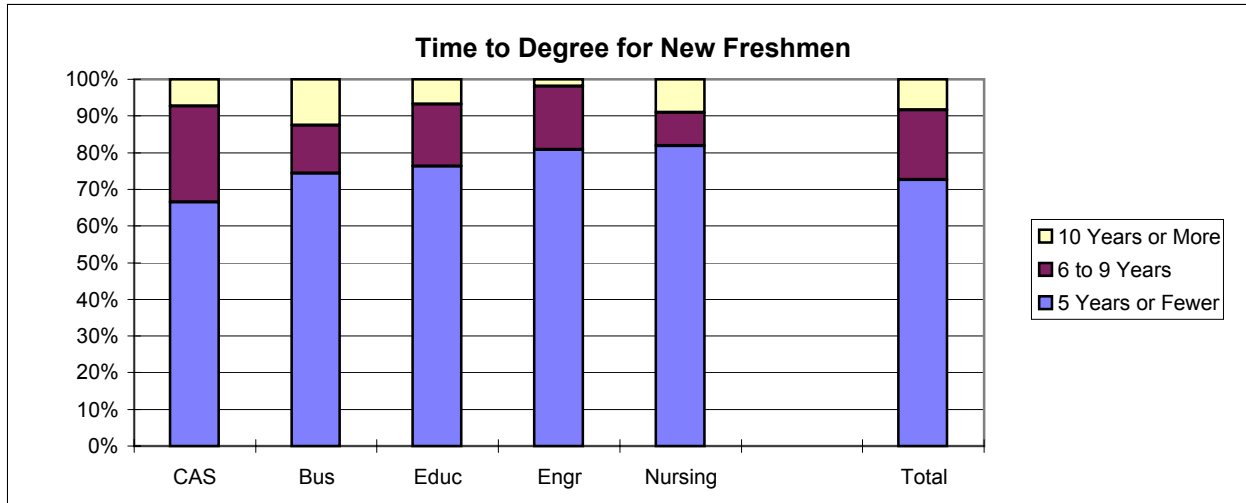
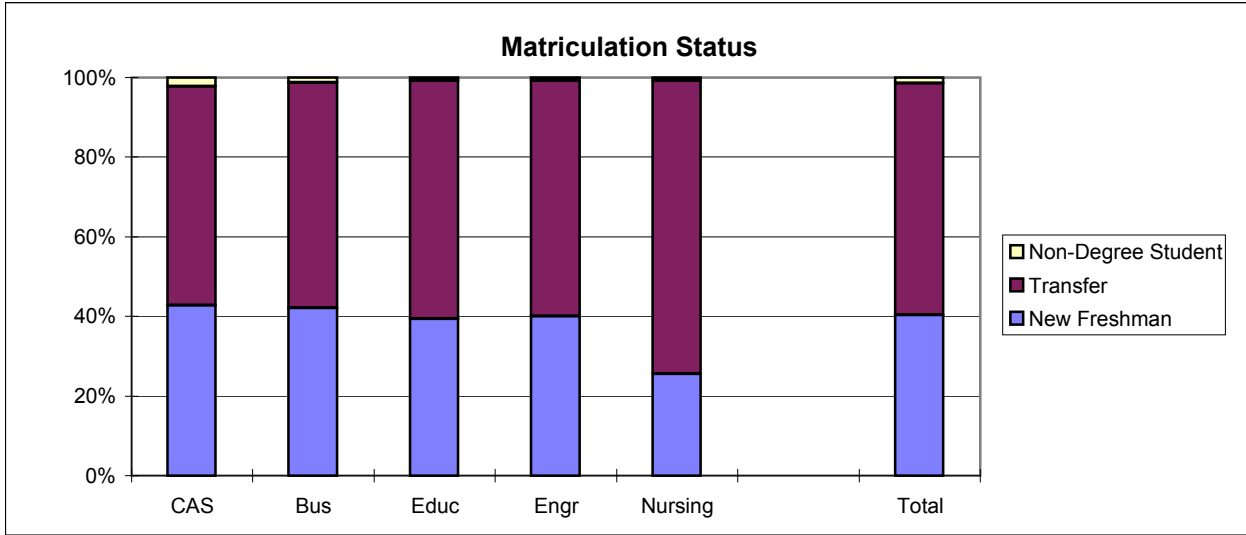
\* Includes deceased alumni, foreign addresses and known bad addresses.

# 2002 Baccalaureate Recipients Profile



# 2002 Baccalaureate Recipients

## *Profile*, con't.





**Southern Illinois University Edwardsville**  
**Survey of 2002 Baccalaureate Graduates -- One Year Out**

*Comparison of All Graduates to Survey Respondents*

School Detail	All Graduates						
	CAS	Bus	Educ	Engr	Nursing	Total	
<b>Total</b>	633	454	376	130	129	1722	
Female	63.7%	48.9%	82.4%	10.8%	88.4%	61.7%	
Male	36.3%	51.1%	17.6%	89.2%	11.6%	38.3%	
Missing Data	0.0%	0.0%	0.0%	0.0%	0.0%	0.0%	
White, Non-Hispanic	88.2%	88.8%	89.4%	88.5%	89.9%	88.7%	
Black, Non-Hispanic	9.0%	5.1%	7.4%	5.4%	7.8%	7.3%	
Asian/Pacific Islander	0.6%	1.3%	0.3%	0.8%	0.0%	0.7%	
American Indian/Alaskan Native	0.3%	0.2%	0.3%	0.8%	0.0%	0.3%	
Hispanic	1.1%	0.7%	2.4%	0.0%	2.3%	1.3%	
Non-Resident Alien	0.8%	4.0%	0.3%	4.6%	0.0%	1.7%	
Missing Data	0.0%	0.0%	0.0%	0.0%	0.0%	0.0%	
Age at Graduation	range	20 to 60	20 to 54	20 to 58	22 to 42	21 to 52	20 to 60
	median	23.14	22.58	23.2	22.83	24.21	22.96
Bachelor of Science	59.9%	87.0%	95.2%	94.6%	100.0%	80.4%	
Bachelor of Music	2.7%	0.0%	0.0%	0.0%	0.0%	1.0%	
Bachelor of Arts	23.2%	0.0%	4.8%	5.4%	0.0%	10.0%	
Bachelor of Fine Arts	1.4%	0.0%	0.0%	0.0%	0.0%	0.5%	
Bachelor of Sci in Accountancy	0.0%	13.0%	0.0%	0.0%	0.0%	3.4%	
Bachelor of Liberal Studies	12.8%	0.0%	0.0%	0.0%	0.0%	4.7%	
Missing Data	0.0%	0.0%	0.0%	0.0%	0.0%	0.0%	
Graduated Spring 2002	52.9%	47.4%	68.1%	54.6%	54.3%	55.0%	
Graduated Summer 2002	16.0%	17.6%	10.1%	13.1%	4.7%	14.1%	
Graduated Fall 2002	31.1%	35.0%	21.8%	32.3%	41.1%	31.0%	
Missing Data	0.0%	0.0%	0.0%	0.0%	0.0%	0.0%	
Matriculated as a New Freshman	42.8%	42.1%	39.4%	40.0%	25.6%	40.4%	
Matriculated as a Transfer	55.0%	56.6%	59.8%	59.2%	73.6%	58.2%	
Matriculated as a Non-Degree Student	2.2%	1.3%	0.8%	0.8%	0.8%	1.5%	
Missing Data	0.0%	0.0%	0.0%	0.0%	0.0%	0.0%	
Time to Degree for New Freshmen							
3 Years or Fewer	1.5%	0.0%	1.4%	0.0%	0.0%	0.9%	
4 Years	31.0%	42.9%	38.5%	38.5%	57.6%	37.7%	
5 Years	33.9%	31.4%	36.5%	42.3%	24.2%	34.0%	
6 Years	15.5%	5.8%	9.5%	15.4%	6.1%	11.1%	
7 Years	7.4%	4.7%	4.1%	1.9%	0.0%	5.2%	
8 Years	2.2%	2.1%	3.4%	0.0%	3.0%	2.3%	
9 Years	1.1%	0.5%	0.0%	0.0%	0.0%	0.6%	
10 Years	0.7%	1.6%	0.0%	0.0%	3.0%	0.9%	
11 Years or More	6.6%	11.0%	6.8%	1.9%	6.1%	7.5%	
Missing Data	0.0%	0.0%	0.0%	0.0%	0.0%	0.0%	
Time to Degree for Transfers							
2 or Fewer Years	16.7%	24.9%	22.2%	11.7%	27.4%	20.7%	
3 Years	29.6%	42.8%	31.6%	44.2%	34.7%	35.0%	
4 Years	28.4%	14.0%	24.9%	23.4%	26.3%	23.4%	
5 Years	10.6%	8.2%	7.6%	5.2%	7.4%	8.6%	
6 Years	3.7%	3.1%	4.0%	5.2%	2.1%	3.6%	
7 Years	3.2%	1.6%	1.3%	0.0%	0.0%	1.8%	
8 Years	2.0%	0.8%	2.7%	2.6%	0.0%	1.7%	
9 Years	0.6%	1.2%	0.9%	1.3%	0.0%	0.8%	
10 Years or More	5.2%	3.5%	4.9%	6.5%	2.1%	4.5%	
Missing Data	0.0%	0.0%	0.0%	0.0%	0.0%	0.0%	
Graduating GPA (4 point scale)	Mean	3.088	2.927	3.367	3.010	3.335	3.119
	Std Dev	0.477	0.444	0.397	0.434	0.362	0.471

**Southern Illinois University Edwardsville**  
**Survey of 2002 Baccalaureate Graduates -- One Year Out**

*Comparison of All Graduates to Survey Respondents, con't.*

<b>School Detail</b>	<b>All One Year Out Survey Respondents</b>						
	<b>CAS</b>	<b>Bus</b>	<b>Educ</b>	<b>Engr</b>	<b>Nursing</b>	<b>Total</b>	
<b>Total</b>	239	175	136	39	56	645	
Female	69.5%	51.4%	88.2%	15.4%	92.9%	67.3%	
Male	30.5%	48.6%	11.8%	84.6%	7.1%	32.7%	
Missing Data	0.0%	0.0%	0.0%	0.0%	0.0%	0.0%	
White, Non-Hispanic	90.4%	93.1%	85.3%	92.3%	91.1%	90.2%	
Black, Non-Hispanic	6.7%	4.0%	10.3%	2.6%	5.4%	6.4%	
Asian/Pacific Islander	0.0%	1.1%	0.7%	2.6%	0.0%	0.6%	
American Indian/Alaskan Native	0.4%	0.0%	0.0%	0.0%	0.0%	0.2%	
Hispanic	1.7%	0.6%	2.9%	0.0%	3.6%	1.7%	
Non-Resident Alien	0.8%	1.1%	0.7%	2.6%	0.0%	0.9%	
Missing Data	0.0%	0.0%	0.0%	0.0%	0.0%	0.0%	
Age at Graduation	range	21 to 60	21 to 54	20 to 58	22 to 41	21 to 52	21 to 60
	median	23.15	22.6	23.17	22.5	22.5	22.9
Bachelor of Science		62.8%	85.1%	95.6%	92.3%	100.0%	80.8%
Bachelor of Music		1.3%	0.0%	0.0%	0.0%	0.0%	0.5%
Bachelor of Arts		25.5%	0.0%	4.4%	7.7%	0.0%	10.9%
Bachelor of Fine Arts		1.3%	0.0%	0.0%	0.0%	0.0%	0.5%
Bachelor of Sci in Accountancy		0.0%	14.9%	0.0%	0.0%	0.0%	4.0%
Bachelor of Liberal Studies		9.2%	0.0%	0.0%	0.0%	0.0%	3.4%
Missing Data		0.0%	0.0%	0.0%	0.0%	0.0%	0.0%
Graduated Spring 2002		59.4%	48.6%	68.4%	59.0%	53.6%	57.8%
Graduated Summer 2002		15.5%	16.6%	11.0%	5.1%	7.1%	13.5%
Graduated Fall 2002		25.1%	34.9%	20.6%	35.9%	39.3%	28.7%
Missing Data		0.0%	0.0%	0.0%	0.0%	0.0%	0.0%
Matriculated as a New Freshman		39.3%	41.7%	38.2%	43.6%	23.2%	38.6%
Matriculated as a Transfer		58.2%	57.1%	61.0%	56.4%	76.8%	60.0%
Matriculated as a Non-Degree Student		2.5%	1.1%	0.7%	0.0%	0.0%	1.4%
Missing Data		0.0%	0.0%	0.0%	0.0%	0.0%	0.0%
Time to Degree for New Freshmen							
3 Years or Fewer		1.1%	0.0%	0.0%	0.0%	0.0%	0.4%
4 Years		38.3%	53.4%	42.3%	52.9%	69.2%	46.2%
5 Years		31.9%	16.4%	25.0%	41.2%	30.8%	26.5%
6 Years		12.8%	9.6%	9.6%	5.9%	0.0%	10.0%
7 Years		2.1%	0.0%	7.7%	0.0%	0.0%	2.4%
8 Years		3.2%	1.4%	1.9%	0.0%	0.0%	2.0%
9 Years		1.1%	0.0%	0.0%	0.0%	0.0%	0.4%
10 Years		1.1%	0.0%	0.0%	0.0%	0.0%	0.4%
11 Years or More		8.5%	19.2%	13.5%	0.0%	0.0%	11.6%
Missing Data		0.0%	0.0%	0.0%	0.0%	0.0%	0.0%
Time to Degree for Transfers							
2 or Fewer Years		15.1%	28.0%	21.7%	13.6%	30.2%	21.4%
3 Years		33.1%	41.0%	28.9%	40.9%	27.9%	34.1%
4 Years		29.5%	15.0%	30.1%	22.7%	27.9%	25.3%
5 Years		10.1%	7.0%	6.0%	9.1%	9.3%	8.3%
6 Years		2.9%	3.0%	2.4%	9.1%	0.0%	2.8%
7 Years		2.9%	0.0%	1.2%	0.0%	0.0%	1.3%
8 Years		1.4%	0.0%	2.4%	0.0%	0.0%	1.0%
9 Years		0.7%	0.0%	0.0%	0.0%	0.0%	0.3%
10 Years or More		4.3%	6.0%	7.2%	4.5%	4.7%	5.4%
Missing Data		0.0%	0.0%	0.0%	0.0%	0.0%	0.0%
Graduating GPA (4 point scale)	Mean	3.196	2.990	3.416	3.139	3.382	3.199
	Std Dev	0.487	0.478	0.399	0.424	0.364	0.479

**Southern Illinois University Edwardsville**  
**Survey of 2002 Baccalaureate Graduates -- One Year Out**  
**Survey Responses -- Part I**  
*Employment Questions*

<b>School Detail</b>	<b>CAS</b>	<b>Bus</b>	<b>Educ</b>	<b>Engr</b>	<b>Nursing</b>	<b>Total</b>
Number of Survey Respondents *	239	175	136	39	56	645
1. Number Employed:						
Full-time	58.8%	77.6%	67.6%	76.9%	85.7%	69.2%
Part-time	25.6%	9.2%	17.6%	12.8%	8.9%	17.3%
Not, but Seeking	5.9%	8.6%	8.1%	7.7%	1.8%	6.8%
Not, not Seeking	9.7%	4.6%	6.6%	2.6%	3.6%	6.7%
Number Responding	238	174	136	39	56	643
<b>The remaining questions in Part I were to be answered only by respondents who were employed full-time or part-time.</b>						
	201	151	116	35	53	556
2. Place of Employment						
Illinois	64.7%	66.0%	80.0%	57.6%	53.5%	66.8%
Missouri	26.3%	29.1%	12.4%	36.4%	32.6%	25.4%
Other	8.9%	5.0%	7.6%	6.1%	14.0%	7.8%
Number Responding	190	141	105	33	43	512
3. Classification of Primary Employer						
Self-Employed or Private Practice	6.0%	3.3%	0.9%	2.9%	0.0%	3.4%
Business (Industrial, Commercial or Service)	29.0%	66.2%	12.1%	40.0%	0.0%	33.5%
Professional Firm (e.g., Engineering, Law)	3.0%	7.9%	0.0%	37.1%	0.0%	5.6%
College or University	13.5%	4.0%	6.9%	5.7%	1.9%	7.9%
Elementary/Secondary School	15.0%	0.0%	59.5%	0.0%	1.9%	18.0%
Health Agency (e.g. Hospital, Clinic)	8.0%	4.0%	7.8%	0.0%	88.7%	14.1%
Federal, State, or Local Government	9.0%	6.6%	0.9%	11.4%	3.8%	6.3%
Armed Services	1.5%	0.7%	0.9%	0.0%	1.9%	1.1%
NonProfit (Non-Government)	7.0%	3.3%	6.0%	2.9%	0.0%	4.9%
Other	8.0%	4.0%	5.2%	0.0%	1.9%	5.2%
Number Responding	200	151	116	35	53	555
4. Job Satisfaction						
Very Satisfied	25.5%	25.2%	36.2%	26.5%	36.5%	28.8%
Satisfied	34.0%	31.8%	35.3%	58.8%	50.0%	36.7%
Somewhat Satisfied	22.5%	24.5%	19.8%	2.9%	13.5%	20.4%
Somewhat Dissatisfied	7.0%	9.9%	4.3%	5.9%	0.0%	6.5%
Dissatisfied	8.5%	6.0%	1.7%	2.9%	0.0%	5.2%
Very Dissatisfied	2.5%	2.6%	2.6%	2.9%	0.0%	2.4%
Number Responding	200	151	116	34	52	553
5. Job in Field?						
Closely Related	31.7%	33.3%	64.3%	60.0%	81.1%	45.5%
Related	31.7%	44.0%	17.4%	25.7%	17.0%	30.3%
Unrelated (choice unknown)	0.5%	2.0%	0.0%	0.0%	0.0%	0.7%
Unrelated (by choice)	15.6%	5.3%	9.6%	5.7%	0.0%	9.4%
Unrelated (not by choice)	20.6%	15.3%	8.7%	8.6%	1.9%	14.1%
Number Responding	199	150	115	35	53	552
6. Timing of Securing First Job After Degree						
Held the Same Job While Enrolled	26.1%	43.7%	10.5%	22.9%	30.2%	27.9%
Secured Job by Graduation	20.1%	15.9%	15.8%	42.9%	47.2%	22.1%
Secured Job After Graduation(timing unknown)	0.5%	0.0%	1.8%	0.0%	1.9%	0.7%
Less than 1 Month After Graduation	8.5%	4.6%	10.5%	5.7%	3.8%	7.2%
1 to 3 Months After Graduation	17.1%	9.3%	25.4%	8.6%	7.5%	15.2%
3 to 6 Months After Graduation	12.1%	15.2%	26.3%	5.7%	5.7%	14.9%
6 to 9 Months After Graduation	9.5%	8.6%	6.1%	11.4%	1.9%	8.0%
More than 9 Months After Graduation	6.0%	2.6%	3.5%	2.9%	1.9%	4.0%
Number Responding	199	151	114	35	53	552

**Southern Illinois University Edwardsville**  
**Survey of 2002 Baccalaureate Graduates -- One Year Out**  
**Survey Responses -- Part I**  
*Employment Questions*

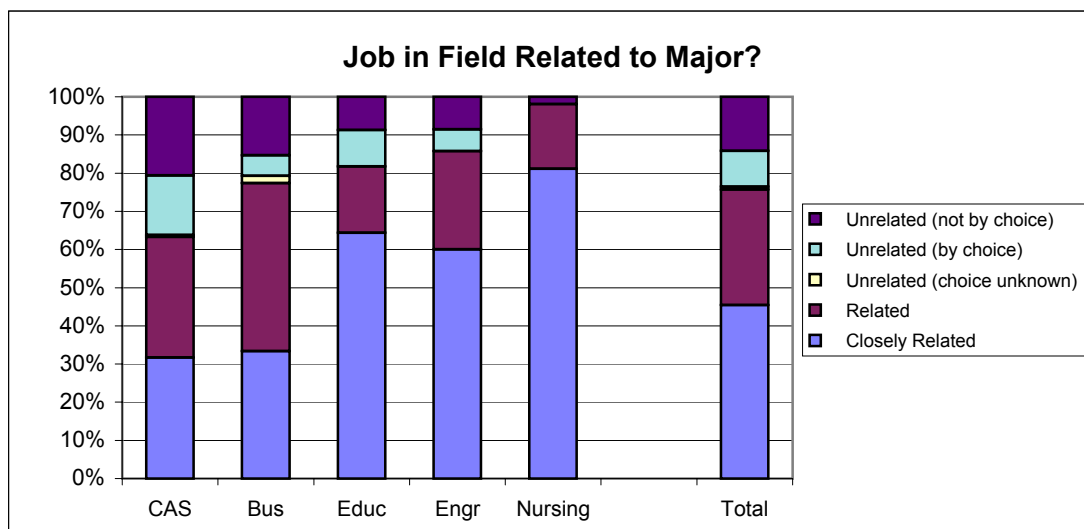
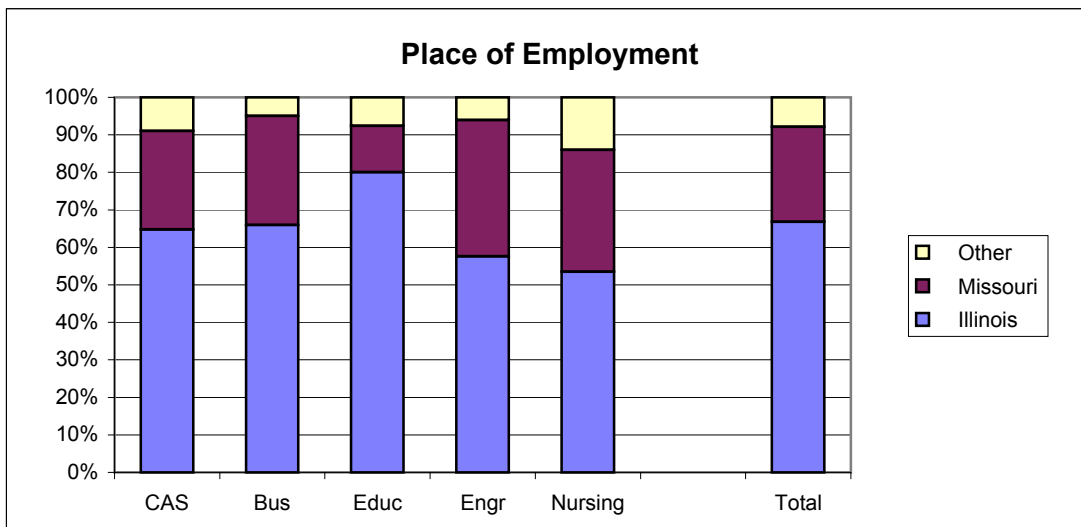
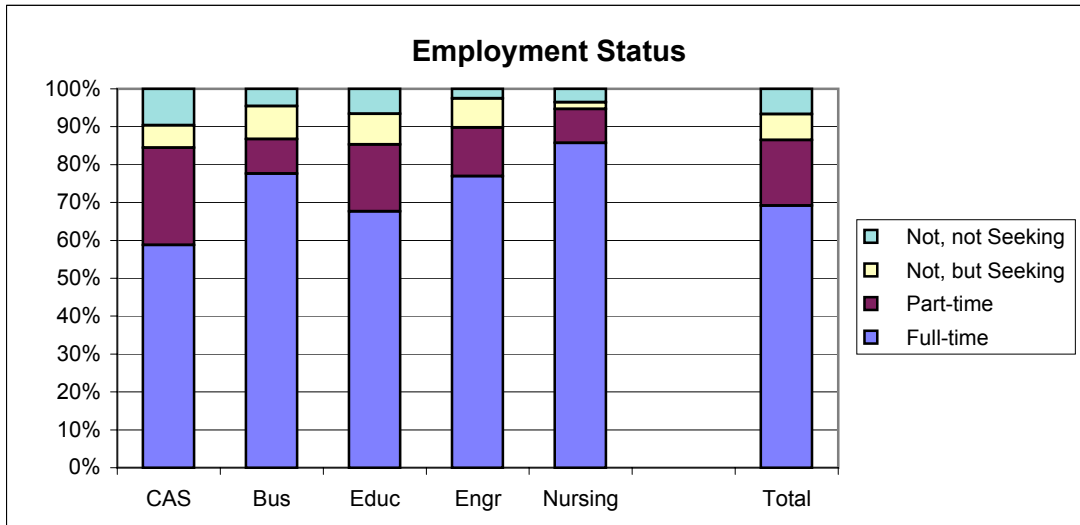
<b>School Detail, con't.</b>	<b>CAS</b>	<b>Bus</b>	<b>Educ</b>	<b>Engr</b>	<b>Nursing</b>	<b>Total</b>
<b>7. Annual Earned Income in Current Job Before Taxes</b>						
Employed Full-Time						
Less Than \$15,000	9.8%	1.6%	11.6%	0.0%	0.0%	6.1%
\$15,000 to 19,999	8.3%	7.3%	8.1%	3.6%	0.0%	6.8%
\$20,000 to \$24,999	22.7%	21.0%	15.1%	0.0%	2.3%	16.9%
\$25,000 to \$29,999	22.7%	18.5%	31.4%	0.0%	4.7%	19.9%
\$30,000 to \$34,999	19.7%	17.7%	29.1%	0.0%	32.6%	21.1%
\$35,000 to \$39,999	7.6%	12.1%	3.5%	17.9%	20.9%	10.2%
\$40,000 or More	9.1%	21.8%	1.2%	78.6%	39.5%	19.1%
Number Responding	132	124	86	28	43	413
Mean Salary	\$29,586	\$32,283	\$25,671	\$45,922	\$38,820	\$31,649
Employed Part-Time						
Less Than \$5,000	12.2%	0.0%	27.8%	60.0%	0.0%	15.9%
5,000 to \$9,999	32.7%	33.3%	27.8%	20.0%	0.0%	29.5%
\$10,000 to \$14,999	22.4%	16.7%	11.1%	20.0%	0.0%	18.2%
\$15,000 to \$19,999	22.4%	25.0%	22.2%	NA	0.0%	20.5%
\$20,000 or More	10.2%	25.0%	11.1%	NA	100.0%	15.9%
Number Responding	49	12	18	5	4	88
Mean Salary	\$11,570	\$17,299	\$11,016	\$6,360	\$28,375	\$11,677
<b>8. Bachelor's Degree Preparation for Job</b>						
Very Well	12.2%	9.4%	26.7%	11.4%	17.6%	15.0%
Well	30.6%	30.2%	30.2%	42.9%	37.3%	31.8%
Adequately	40.3%	48.3%	32.8%	37.1%	41.2%	40.8%
Inadequately	8.7%	4.7%	6.9%	2.9%	2.0%	6.2%
Poorly	2.6%	4.7%	0.9%	2.9%	2.0%	2.7%
Very Poorly	5.6%	2.7%	2.6%	2.9%	0.0%	3.5%
Number Responding	196	149	116	35	51	547
<b>9a. Primary Occupation</b>						
Management	8.2%	14.8%	1.8%	6.5%	1.9%	7.9%
Business Operations	2.2%	9.2%	2.7%	0.0%	0.0%	3.9%
Financial Specialists	1.1%	19.7%	0.9%	0.0%	0.0%	6.0%
Computer Specialists	0.0%	16.2%	0.0%	16.1%	0.0%	5.4%
Mathematical Scientists and Technicians	0.0%	0.0%	0.0%	0.0%	0.0%	0.0%
Architects, Surveyors, and Cartographers	2.2%	0.0%	0.0%	0.0%	0.0%	0.8%
Engineers and Related Technicians	1.6%	0.7%	0.0%	64.5%	0.0%	4.6%
Life & Physical Scientists, and Technicians	6.5%	0.7%	0.0%	0.0%	0.0%	2.5%
Social Scientists	3.8%	0.0%	0.9%	0.0%	0.0%	1.5%
Health: Doctors	0.0%	0.0%	0.0%	0.0%	0.0%	0.0%
Health: Registered Nurses	0.0%	0.0%	0.0%	0.0%	92.3%	9.2%
Health: Theratpists	0.0%	0.7%	2.7%	0.0%	0.0%	0.8%
Health: Oth Practitnrs, Prof.s, & Suppt Wkrs	8.2%	0.7%	6.4%	0.0%	0.0%	4.4%
Community & Social Service	8.2%	0.0%	6.4%	0.0%	0.0%	4.2%
Legal: Attorneys/Judges	0.0%	0.0%	0.0%	0.0%	0.0%	0.0%
Legal: Legal Support Workers	0.5%	2.1%	0.0%	0.0%	0.0%	0.8%
Education: Early Childhood Teachers	3.3%	0.0%	7.3%	0.0%	0.0%	2.7%
Education: Elementary School Teachers	0.5%	0.0%	18.2%	0.0%	0.0%	4.0%
Education: Middle School Teachers	2.2%	0.0%	10.0%	0.0%	0.0%	2.9%
Education: Secondary School Teachers	9.8%	0.0%	2.7%	0.0%	0.0%	4.0%
Education: Special Education Teachers	0.0%	0.0%	20.0%	0.0%	0.0%	4.2%
Education: Other, except Administrators	8.7%	0.7%	6.4%	3.2%	1.9%	5.0%
continued						

**Southern Illinois University Edwardsville**  
**Survey of 2002 Baccalaureate Graduates -- One Year Out**  
**Survey Responses -- Part I**  
*Employment Questions*

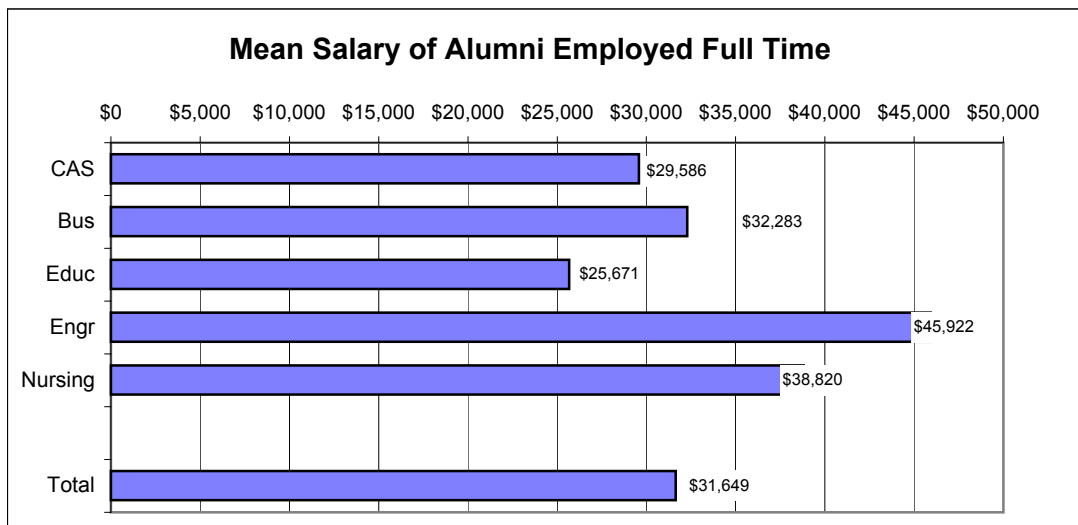
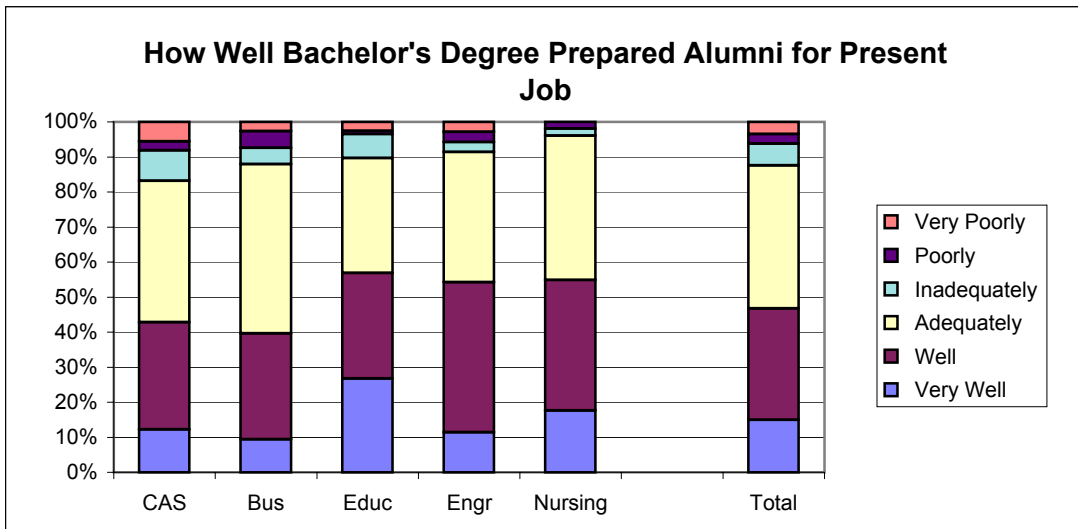
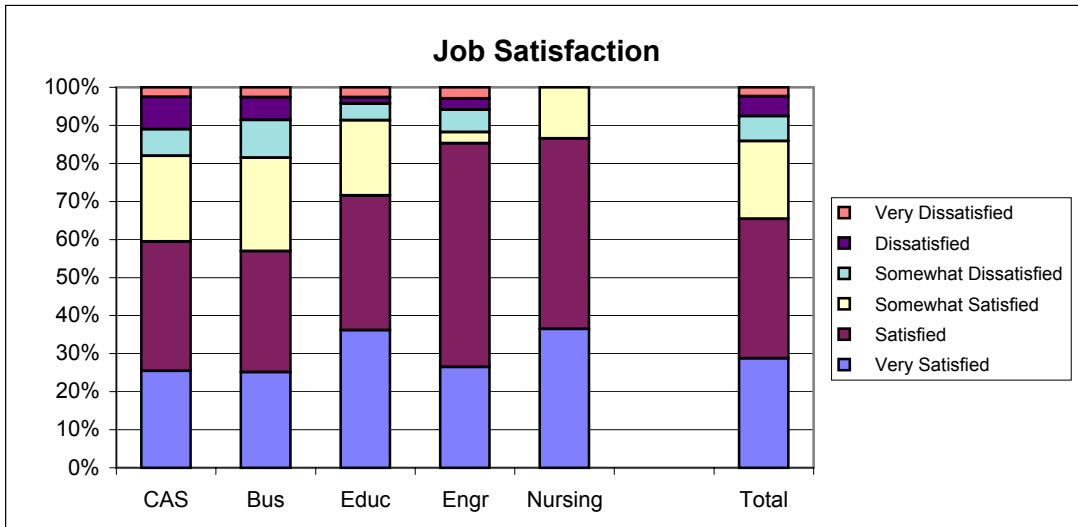
<b>School Detail, con't.</b>	<b>CAS</b>	<b>Bus</b>	<b>Educ</b>	<b>Engr</b>	<b>Nursing</b>	<b>Total</b>
9a. continuation of Primary Occupation						
Library Occupations	3.3%	0.0%	0.9%	0.0%	0.0%	1.3%
Art and Design Workers	1.6%	0.0%	0.0%	0.0%	0.0%	0.6%
Entertainment, Performers, Sports & Related	1.1%	0.7%	0.9%	0.0%	0.0%	0.8%
Media and Communication Workers	3.3%	0.0%	0.0%	0.0%	0.0%	1.2%
Sales	6.5%	10.6%	3.6%	3.2%	1.9%	6.4%
Office & Administration	6.0%	14.1%	2.7%	3.2%	0.0%	6.7%
Protective Services	3.3%	1.4%	0.9%	0.0%	0.0%	1.7%
Food Preparation & Serving	4.3%	2.1%	1.8%	3.2%	0.0%	2.7%
Buildings & Grounds Maintenance	0.0%	0.0%	0.9%	0.0%	0.0%	0.2%
Personal Care and Service	1.6%	1.4%	0.9%	0.0%	0.0%	1.2%
Farming, Fishing, and Forestry	0.0%	0.7%	0.0%	0.0%	0.0%	0.2%
Construction & Extractive	0.0%	1.4%	0.0%	0.0%	0.0%	0.4%
Installation, Maintenance, & Repair	0.0%	0.0%	0.0%	0.0%	0.0%	0.0%
Production	0.0%	1.4%	0.0%	0.0%	0.0%	0.4%
Transportation and Material Moving	0.5%	0.0%	0.0%	0.0%	0.0%	0.2%
Military	1.6%	0.7%	0.9%	0.0%	1.9%	1.2%
Number Responding	184	142	110	31	52	519
9b. Industry						
Agriculture, Forestry, and Fishing	0.7%	1.7%	1.4%	0.0%	0.0%	1.0%
Mining	0.0%	0.8%	0.0%	0.0%	0.0%	0.3%
Utilities	0.7%	3.3%	0.0%	4.2%	0.0%	1.5%
Construction	0.0%	5.0%	0.0%	20.8%	0.0%	2.8%
Manufacturing	1.5%	7.5%	1.4%	20.8%	0.0%	4.3%
Wholesale Trade	0.0%	2.5%	0.0%	0.0%	0.0%	0.8%
Retail Trade	5.1%	13.3%	4.1%	0.0%	0.0%	6.6%
Transportation	3.7%	2.5%	1.4%	12.5%	0.0%	3.0%
Information	2.9%	5.0%	1.4%	8.3%	0.0%	3.3%
Finance & Insurance	2.9%	24.2%	0.0%	4.2%	0.0%	8.6%
Real Estate & Rental & Leasing	0.0%	1.7%	0.0%	0.0%	0.0%	0.5%
Professional, Scientific & Technical Services	11.8%	5.8%	1.4%	12.5%	0.0%	6.8%
Management of Companies & Enterprises	0.7%	2.5%	0.0%	4.2%	0.0%	1.3%
Admin & Suppt, Waste Mgmt & Remedtn Svcs	0.7%	0.0%	1.4%	4.2%	0.0%	0.8%
Educational Services	27.9%	2.5%	66.2%	0.0%	0.0%	22.8%
Health Care & Social Assistance	17.6%	5.0%	12.2%	0.0%	100.0%	20.3%
Arts, Entertainment & Recreation	6.6%	1.7%	0.0%	0.0%	0.0%	2.8%
Accommodations & Food Services	5.9%	2.5%	2.7%	4.2%	0.0%	3.5%
Other Services (except Public Admin)	8.1%	10.8%	6.8%	4.2%	0.0%	7.6%
Public Administration	2.9%	1.7%	0.0%	0.0%	0.0%	1.5%
Number Responding	136	120	74	24	41	395

6/17/2004

## 2002 Baccalaureate Graduates One Year Out *Employment*



## 2002 Baccalaureate Graduates One Year Out *Employment, con't.*



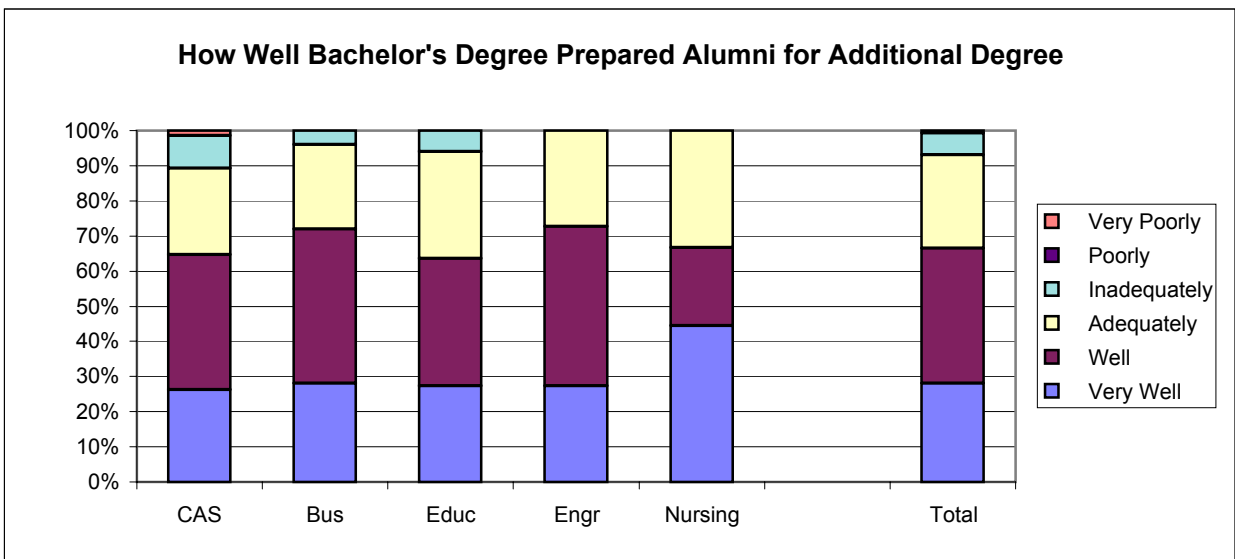
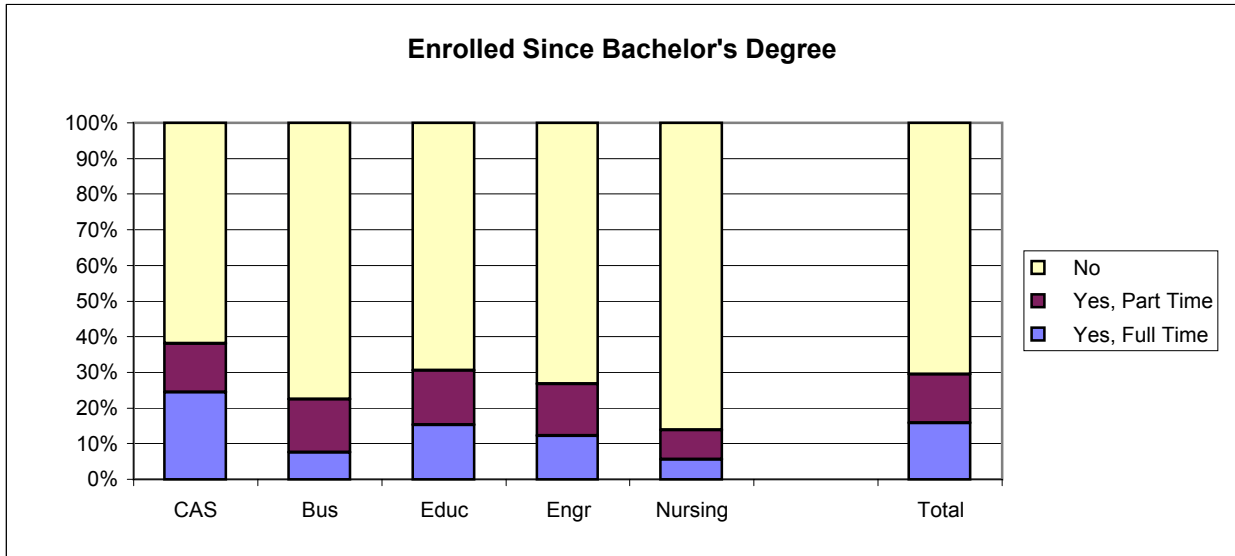
**Southern Illinois University Edwardsville**  
**Survey of 2002 Baccalaureate Graduates -- One Year Out**  
**Survey Responses -- Part II**  
*Education Questions*

<b>School Detail</b>	<b>CAS</b>	<b>Bus</b>	<b>Educ</b>	<b>Engr</b>	<b>Nursing</b>	<b>Total</b>
Number of Survey Respondents	239	175	136	39	56	645
10. Enrolled in College or University Since Degree?						
Yes, Full Time	28.5%	16.1%	15.4%	17.9%	7.1%	19.8%
Yes, Part Time	15.3%	8.6%	12.5%	10.3%	3.6%	11.6%
No	56.2%	75.3%	72.1%	71.8%	89.3%	68.6%
Number Responding	235	174	136	39	56	640
11. Pursuing or Have Completed an Additional Degree?						
Yes	72.1%	60.3%	57.1%	64.3%	27.8%	63.2%
No	27.9%	39.7%	42.9%	35.7%	72.2%	36.8%
Number Responding	129	68	56	14	18	285
<b>The remaining questions in Part II were to be answered only by respondents who were pursuing or had completed another degree.</b>						
	93	41	32	9	5	180
11b. Pursuing or Completed Which Degree?						
Associate's	2.2%	0.0%	0.0%	0.0%	0.0%	1.1%
Second Bachelor's	2.2%	2.4%	3.2%	11.1%	0.0%	2.8%
Academic Master's (MA, MS, MEd, etc)	52.7%	19.5%	64.5%	55.6%	40.0%	46.9%
Prof. Master's or Ed Specialist	25.8%	63.4%	12.9%	33.3%	40.0%	33.0%
Medicine (MD, OD)	1.1%	0.0%	0.0%	0.0%	0.0%	0.6%
Health Prof. (dentistry, pharmacy, etc.)	4.3%	2.4%	0.0%	0.0%	0.0%	2.8%
Theology/Divinity	0.0%	0.0%	0.0%	0.0%	0.0%	0.0%
Law (LLB, JD)	2.2%	7.3%	0.0%	0.0%	20.0%	3.4%
Doctorate (PhD, EdD, DA, DBA, etc.)	5.4%	0.0%	3.2%	0.0%	0.0%	3.4%
Other	4.3%	4.9%	16.1%	0.0%	0.0%	6.1%
Number Responding	93	41	31	9	5	179
12. How Well Bach. Degree Prepared You for Additional Degree						
Very Well	26.1%	34.1%	34.4%	11.1%	20.0%	28.5%
Well	39.1%	39.0%	40.6%	66.7%	0.0%	39.7%
Adequately	29.3%	17.1%	18.8%	22.2%	60.0%	25.1%
Inadequately	3.3%	7.3%	3.1%	0.0%	0.0%	3.9%
Poorly	1.1%	2.4%	0.0%	0.0%	0.0%	1.1%
Very Poorly	1.1%	0.0%	3.1%	0.0%	20.0%	1.7%
Number Responding	92	41	32	9	5	179

6/16/2004



## 2002 Baccalaureate Graduates One Year Out Additional Education

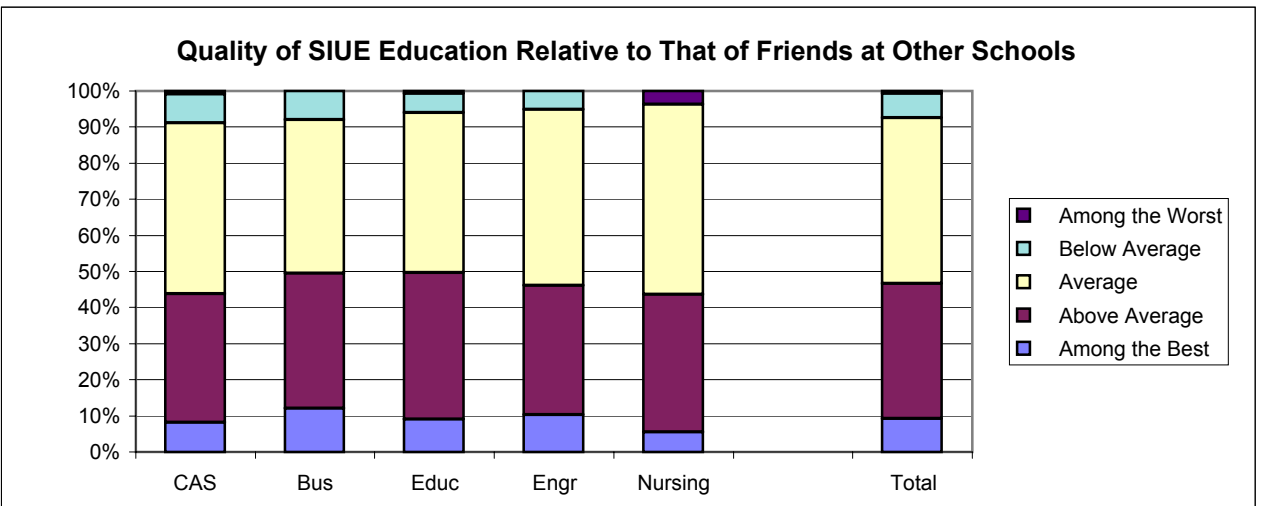
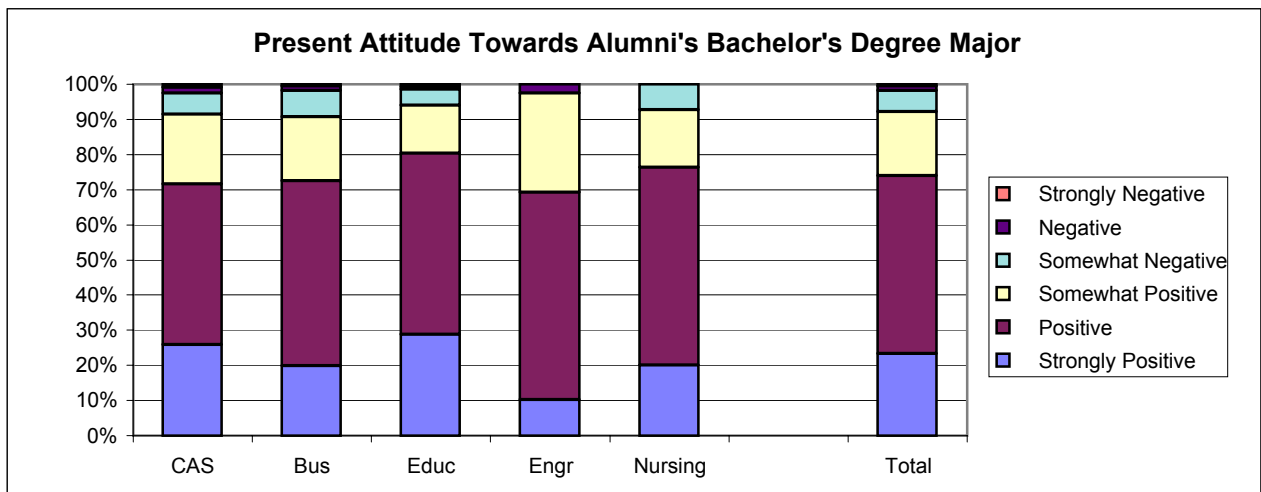
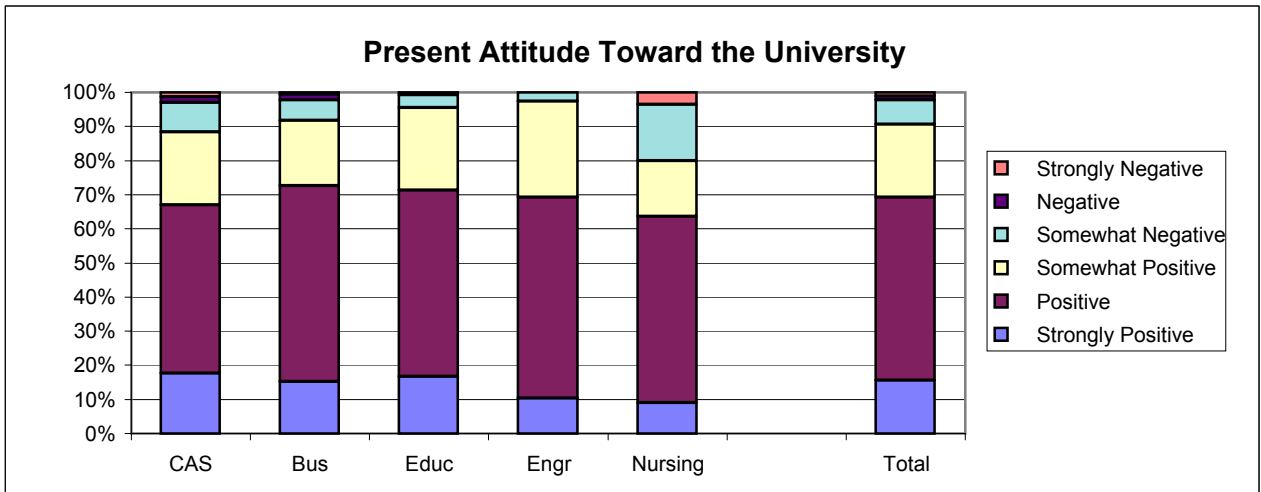


**Southern Illinois University Edwardsville**  
**Survey of 2002 Baccalaureate Graduates -- One Year Out**  
**Survey Responses -- Part III**  
*Satisfaction Questions*

<b>School Detail</b>	<b>CAS</b>	<b>Bus</b>	<b>Educ</b>	<b>Engr</b>	<b>Nursing</b>	<b>Total</b>
Number of Survey Respondents	239	175	136	39	56	645
<b>13. Present Attitude Towards the University</b>						
Strongly Positive	17.6%	15.2%	16.7%	10.3%	9.1%	15.6%
Positive	49.4%	57.3%	54.5%	59.0%	54.5%	53.7%
Somewhat Positive	21.5%	19.3%	24.2%	28.2%	16.4%	21.4%
Somewhat Negative	8.6%	5.8%	3.8%	2.6%	16.4%	7.1%
Negative	1.7%	1.8%	0.0%	0.0%	0.0%	1.1%
Strongly Negative	1.3%	0.6%	0.8%	0.0%	3.6%	1.1%
Number Responding	233	171	132	39	55	630
<b>14. Present Attitude Towards your Bachelor's Degree Major</b>						
Strongly Positive	25.9%	19.9%	28.8%	10.3%	20.0%	23.4%
Positive	45.7%	52.6%	51.5%	59.0%	56.4%	50.6%
Somewhat Positive	19.8%	18.1%	13.6%	28.2%	16.4%	18.3%
Somewhat Negative	6.0%	7.6%	4.5%	0.0%	7.3%	5.9%
Negative	1.7%	1.2%	0.8%	2.6%	0.0%	1.3%
Strongly Negative	0.9%	0.6%	0.8%	0.0%	0.0%	0.6%
Number Responding	232	171	132	39	55	629

6/17/2004

## 2002 Baccalaureate Graduates One Year Out Satisfaction



**Southern Illinois University Edwardsville**  
**Survey of 2002 Baccalaureate Graduates -- One Year Out**  
**Survey Responses -- Part IV**  
*Educational Practices Questions*

<b>School Detail</b>	<b>CAS</b>	<b>Bus</b>	<b>Educ</b>	<b>Engr</b>	<b>Nursing</b>	<b>Total</b>
Number of Survey Respondents	239	175	136	39	56	645
15. Faculty in Major Were Accessible Outside of Class						
Very Often	35.9%	19.5%	24.3%	23.1%	16.1%	26.5%
Often	45.6%	52.9%	47.8%	51.3%	41.1%	48.0%
Sometimes	16.0%	24.1%	24.3%	20.5%	37.5%	22.1%
Infrequently	2.5%	2.9%	3.7%	5.1%	5.4%	3.3%
Never	0.0%	0.6%	0.0%	0.0%	0.0%	0.2%
Number Responding	237	174	136	39	56	642
16. In Major, Student was Expected to Work Cooperatively with Other Students						
Very Often	30.3%	61.5%	47.1%	33.3%	37.5%	43.1%
Often	37.8%	31.0%	33.1%	51.3%	41.1%	36.1%
Sometimes	26.1%	6.9%	17.6%	12.8%	19.6%	17.7%
Infrequently	5.5%	0.6%	2.2%	2.6%	1.8%	3.0%
Never	0.4%	0.0%	0.0%	0.0%	0.0%	0.2%
Number Responding	238	174	136	39	56	643
17. In Major, Faculty Encouraged Student to Challenge Ideas (student's, other students, and in readings & materials)						
Very Often	26.9%	14.9%	29.4%	10.3%	21.4%	22.7%
Often	39.9%	44.8%	44.9%	33.3%	37.5%	41.7%
Sometimes	23.9%	31.6%	21.3%	41.0%	30.4%	27.1%
Infrequently	9.2%	6.9%	4.4%	12.8%	7.1%	7.6%
Never	0.0%	1.7%	0.0%	2.6%	3.6%	0.9%
Number Responding	238	174	136	39	56	643
18. In Major, Faculty Used Appropriate Teaching Activities to Help Student Learn						
Very Often	31.9%	14.4%	29.4%	5.1%	12.5%	23.3%
Often	51.7%	57.5%	50.0%	66.7%	57.1%	54.3%
Sometimes	11.8%	23.6%	16.2%	28.2%	25.0%	18.0%
Infrequently	4.6%	4.0%	4.4%	0.0%	5.4%	4.2%
Never	0.0%	0.6%	0.0%	0.0%	0.0%	0.2%
Number Responding	238	174	136	39	56	643
19. In Major, Faculty had High Expectations for Quality Of Student Work						
Very Often	32.1%	24.7%	44.1%	15.4%	32.1%	31.6%
Often	48.5%	54.0%	41.9%	71.8%	42.9%	49.5%
Sometimes	16.9%	20.1%	11.8%	12.8%	25.0%	17.1%
Infrequently	2.5%	1.1%	1.5%	0.0%	0.0%	1.6%
Never	0.0%	0.0%	0.7%	0.0%	0.0%	0.2%
Number Responding	237	174	136	39	56	642
20. In Major, Faculty Provided Timely Feedback						
Very Often	26.1%	17.8%	30.1%	2.6%	16.1%	22.4%
Often	51.7%	52.3%	54.4%	66.7%	37.5%	52.1%
Sometimes	18.9%	27.6%	12.5%	25.6%	37.5%	21.9%
Infrequently	3.4%	1.7%	2.9%	5.1%	8.9%	3.4%
Never	0.0%	0.6%	0.0%	0.0%	0.0%	0.2%
Number Responding	238	174	136	39	56	643

**Southern Illinois University Edwardsville**  
**Survey of 2002 Baccalaureate Graduates -- One Year Out**  
**Survey Responses -- Part IV**  
*Educational Practices Questions*

<b>School Detail, cont'd</b>	<b>CAS</b>	<b>Bus</b>	<b>Educ</b>	<b>Engr</b>	<b>Nursing</b>	<b>Total</b>
21. In Major, Faculty Encouraged Students' Questions and Discussion in Class						
Very Often	47.1%	37.0%	48.5%	17.9%	30.4%	41.4%
Often	38.2%	45.7%	44.1%	59.0%	46.4%	43.5%
Sometimes	11.8%	14.5%	6.6%	23.1%	19.6%	12.8%
Infrequently	2.9%	2.9%	0.7%	0.0%	3.6%	2.3%
Never	0.0%	0.0%	0.0%	0.0%	0.0%	0.0%
Number Responding	238	173	136	39	56	642
22. In Major, Student Spent Necessary Time and Energy to Come to Class Prepared						
Very Often	46.0%	35.3%	49.3%	23.1%	37.5%	41.7%
Often	39.7%	46.2%	38.2%	51.3%	57.1%	43.4%
Sometimes	14.3%	13.9%	11.0%	25.6%	5.4%	13.4%
Infrequently	0.0%	4.6%	1.5%	0.0%	0.0%	1.6%
Never	0.0%	0.0%	0.0%	0.0%	0.0%	0.0%
Number Responding	237	173	136	39	56	641

6/23/2004

**Southern Illinois University Edwardsville**  
**Survey of 2002 Baccalaureate Graduates -- One Year Out**  
**Survey Responses -- Part V**  
*Program Quality Questions*

<b>School Detail</b>	<b>CAS</b>	<b>Bus</b>	<b>Educ</b>	<b>Engr</b>	<b>Nursing</b>	<b>Total</b>
Number of Survey Respondents	239	175	136	39	56	645
23A. Quality of Major in Offering						
Sufficient Courses						
Excellent	36.1%	28.2%	29.4%	23.1%	30.4%	31.3%
Good	42.4%	55.7%	51.5%	48.7%	50.0%	49.0%
Fair	17.2%	14.4%	16.2%	23.1%	16.1%	16.5%
Poor	4.2%	1.7%	2.9%	5.1%	3.6%	3.3%
Number Responding	238	174	136	39	56	643
23B. Quality of Major in Offering						
Convenient Class Times						
Excellent	28.2%	18.4%	16.9%	10.3%	25.0%	21.8%
Good	47.1%	52.9%	51.5%	48.7%	30.4%	48.2%
Fair	20.2%	22.4%	30.1%	30.8%	39.3%	25.2%
Poor	4.6%	6.3%	1.5%	10.3%	5.4%	4.8%
Number Responding	238	174	136	39	56	643
23C. Quality of Major in Offering						
Logical Class Sequences						
Excellent	32.4%	21.8%	25.7%	12.8%	34.5%	27.1%
Good	47.5%	58.6%	55.1%	64.1%	47.3%	53.1%
Fair	16.4%	16.7%	16.2%	23.1%	14.5%	16.7%
Poor	3.8%	2.9%	2.9%	0.0%	3.6%	3.1%
Number Responding	238	174	136	39	55	642
24 Quality of Faculty in Major						
Excellent	43.3%	28.7%	42.2%	18.9%	17.9%	35.5%
Good	46.2%	56.9%	47.4%	73.0%	53.6%	51.6%
Fair	8.8%	12.6%	9.6%	5.4%	21.4%	10.9%
Poor	1.7%	1.7%	0.7%	2.7%	7.1%	2.0%
Number Responding	238	174	135	37	56	640
25 Grading Standards in Major Were:						
Too High	1.7%	5.7%	3.7%	5.1%	1.8%	3.4%
About Right	89.1%	89.1%	93.3%	92.3%	94.6%	90.7%
Too Low	9.2%	5.2%	3.0%	2.6%	3.6%	5.9%
Number Responding	238	174	135	39	56	642

6/23/2004

**Southern Illinois University Edwardsville**  
**Survey of 2002 Baccalaureate Graduates -- One Year Out**  
**Survey Responses -- Part VI**  
*Educational Effectiveness Questions*

<b>School Detail</b>	<b>CAS</b>	<b>Bus</b>	<b>Educ</b>	<b>Engr</b>	<b>Nursing</b>	<b>Total</b>
Number of Survey Respondents	239	175	136	39	56	645
<b>26. Helpfulness of University Experiences in:</b>						
<b>A. Developing Critical Thinking Ability</b>						
Extremely Helpful	17.3%	9.2%	8.8%	15.4%	12.7%	12.8%
Very Helpful	49.4%	50.9%	52.2%	56.4%	45.5%	50.5%
Moderately Helpful	27.0%	33.5%	28.7%	23.1%	30.9%	29.2%
Slightly Helpful	5.1%	4.0%	10.3%	2.6%	9.1%	6.1%
Not Helpful	1.3%	2.3%	0.0%	2.6%	1.8%	1.4%
Number Responding	237	173	136	39	55	640
<b>B. Developing Sense of Ethics</b>						
Extremely Helpful	13.1%	12.1%	12.6%	2.6%	9.1%	11.7%
Very Helpful	35.2%	33.9%	43.7%	38.5%	36.4%	36.9%
Moderately Helpful	34.3%	35.6%	27.4%	46.2%	29.1%	33.5%
Slightly Helpful	9.7%	15.5%	11.9%	2.6%	18.2%	12.1%
Not Helpful	7.6%	2.9%	4.4%	10.3%	7.3%	5.8%
Number Responding	236	174	135	39	55	639
<b>C. Understanding People with Different Backgrounds, Habits, Values, Appearances and Abilities</b>						
Extremely Helpful	28.0%	21.8%	25.9%	10.3%	16.4%	23.8%
Very Helpful	37.3%	36.8%	44.4%	43.6%	32.7%	38.7%
Moderately Helpful	24.2%	28.2%	24.4%	35.9%	32.7%	26.8%
Slightly Helpful	6.8%	11.5%	3.0%	5.1%	14.5%	7.8%
Not Helpful	3.8%	1.7%	2.2%	5.1%	3.6%	3.0%
Number Responding	236	174	135	39	55	639
<b>D. Becoming a More Active Citizen</b>						
Extremely Helpful	9.3%	4.6%	7.5%	2.6%	3.6%	6.7%
Very Helpful	17.8%	14.9%	26.9%	23.1%	21.8%	19.6%
Moderately Helpful	35.6%	42.5%	35.1%	38.5%	38.2%	37.8%
Slightly Helpful	22.0%	24.1%	19.4%	17.9%	23.6%	21.9%
Not Helpful	15.3%	13.8%	11.2%	17.9%	12.7%	13.9%
Number Responding	236	174	134	39	55	638
<b>E. Improving Quality of Life (aside from financial benefits)</b>						
Extremely Helpful	14.0%	9.2%	8.2%	5.1%	9.1%	10.5%
Very Helpful	29.7%	31.8%	35.8%	38.5%	23.6%	31.6%
Moderately Helpful	30.9%	37.0%	34.3%	35.9%	36.4%	34.1%
Slightly Helpful	16.5%	13.9%	13.4%	15.4%	23.6%	15.7%
Not Helpful	8.9%	8.1%	8.2%	5.1%	7.3%	8.2%
Number Responding	236	173	134	39	55	637
<b>F. Developing Reasoning Skills</b>						
Extremely Helpful	16.9%	14.4%	11.9%	20.5%	12.7%	15.0%
Very Helpful	47.3%	48.3%	47.0%	53.8%	47.3%	47.9%
Moderately Helpful	27.8%	32.8%	29.1%	15.4%	27.3%	28.6%
Slightly Helpful	6.3%	2.9%	9.0%	7.7%	10.9%	6.4%
Not Helpful	1.7%	1.7%	3.0%	2.6%	1.8%	2.0%
Number Responding	237	174	134	39	55	639

**Southern Illinois University Edwardsville**  
**Survey of 2002 Baccalaureate Graduates -- One Year Out**  
**Survey Responses -- Part VI**  
*Educational Effectiveness Questions*

<b>School Detail, con't.</b>	<b>CAS</b>	<b>Bus</b>	<b>Educ</b>	<b>Engr</b>	<b>Nursing</b>	<b>Total</b>
<b>G. Viewing Problems from Different Perspectives</b>						
Extremely Helpful	20.8%	16.2%	17.9%	17.9%	9.1%	17.7%
Very Helpful	47.5%	48.0%	53.7%	53.8%	47.3%	49.3%
Moderately Helpful	23.7%	29.5%	20.1%	28.2%	32.7%	25.6%
Slightly Helpful	5.9%	4.6%	6.7%	0.0%	9.1%	5.7%
Not Helpful	2.1%	1.7%	1.5%	0.0%	1.8%	1.7%
Number Responding	236	173	134	39	55	637
<b>H. Developing Ability to Solve Problems</b>						
Extremely Helpful	19.8%	16.1%	10.4%	28.2%	12.7%	16.7%
Very Helpful	44.3%	49.4%	51.5%	53.8%	36.4%	47.1%
Moderately Helpful	26.2%	27.6%	27.6%	17.9%	36.4%	27.2%
Slightly Helpful	7.6%	5.7%	7.5%	0.0%	12.7%	7.0%
Not Helpful	2.1%	1.1%	3.0%	0.0%	1.8%	1.9%
Number Responding	237	174	134	39	55	639
<b>I. Making Informed Decisions as a Citizen</b>						
Extremely Helpful	14.3%	10.3%	8.2%	10.3%	9.1%	11.3%
Very Helpful	35.9%	39.1%	50.0%	38.5%	27.3%	39.1%
Moderately Helpful	31.6%	37.9%	26.9%	38.5%	34.5%	33.0%
Slightly Helpful	10.1%	9.8%	7.5%	12.8%	23.6%	10.8%
Not Helpful	8.0%	2.9%	7.5%	0.0%	5.5%	5.8%
Number Responding	237	174	134	39	55	639
<b>J. Developing Writing Skills</b>						
Extremely Helpful	25.0%	25.9%	15.0%	2.6%	12.7%	20.7%
Very Helpful	40.3%	34.5%	43.6%	41.0%	38.2%	39.2%
Moderately Helpful	19.1%	28.7%	27.8%	38.5%	29.1%	25.6%
Slightly Helpful	10.6%	7.5%	8.3%	12.8%	12.7%	9.6%
Not Helpful	5.1%	3.4%	5.3%	5.1%	7.3%	4.9%
Number Responding	236	174	133	39	55	637
<b>K. Developing Oral Communication Skills</b>						
Extremely Helpful	26.6%	31.0%	19.4%	15.4%	18.2%	24.9%
Very Helpful	37.6%	43.1%	52.2%	38.5%	32.7%	41.8%
Moderately Helpful	25.3%	18.4%	20.1%	30.8%	27.3%	22.8%
Slightly Helpful	6.8%	6.9%	4.5%	7.7%	12.7%	6.9%
Not Helpful	3.8%	0.6%	3.7%	7.7%	9.1%	3.6%
Number Responding	237	174	134	39	55	639
<b>L. Developing Knowledge of Scientific and Technological Developments</b>						
Extremely Helpful	13.1%	10.9%	10.4%	33.3%	18.2%	13.6%
Very Helpful	35.4%	39.1%	38.8%	53.8%	30.9%	37.9%
Moderately Helpful	28.7%	36.2%	30.6%	10.3%	34.5%	30.5%
Slightly Helpful	15.2%	12.1%	14.9%	2.6%	12.7%	13.3%
Not Helpful	7.6%	1.7%	5.2%	0.0%	3.6%	4.7%
Number Responding	237	174	134	39	55	639



**Southern Illinois University Edwardsville**  
**Survey of 2002 Baccalaureate Graduates -- One Year Out**  
**Survey Responses -- Part VI**  
*Educational Effectiveness Questions*

<b>School Detail, con't.</b>	<b>CAS</b>	<b>Bus</b>	<b>Educ</b>	<b>Engr</b>	<b>Nursing</b>	<b>Total</b>
<b>27. Undergraduate Education Broadened Interest Beyond Subjects in Major</b>						
Strongly Agree	27.7%	17.2%	13.3%	12.8%	7.4%	19.2%
Agree	50.2%	51.1%	56.3%	64.1%	35.2%	51.3%
Neutral	16.6%	25.9%	22.2%	20.5%	37.0%	22.3%
Disagree	5.1%	4.0%	7.4%	0.0%	18.5%	6.1%
Strongly Disagree	0.4%	1.7%	0.7%	2.6%	1.9%	1.1%
Number Responding	235	174	135	39	54	637
<b>28. Importance of College Education to:</b>						
<b>A. Personal Life</b>						
Very Important	63.7%	56.3%	58.8%	48.7%	60.0%	59.4%
Moderately Important	24.5%	28.2%	30.9%	48.7%	29.1%	28.7%
Slightly Important	7.2%	9.8%	7.4%	2.6%	5.5%	7.5%
Not Important	4.6%	5.7%	2.9%	0.0%	5.5%	4.4%
Number Responding	237	174	136	39	55	641
<b>B. Community Life</b>						
Very Important	32.5%	26.4%	36.8%	15.8%	32.7%	30.8%
Moderately Important	36.3%	35.1%	46.3%	34.2%	41.8%	38.4%
Slightly Important	19.4%	24.1%	11.0%	42.1%	14.5%	19.8%
Not Important	11.8%	14.4%	5.9%	7.9%	10.9%	10.9%
Number Responding	237	174	136	38	55	640
<b>C. Professional Life</b>						
Very Important	65.4%	55.2%	75.7%	68.4%	65.5%	65.0%
Moderately Important	21.9%	27.0%	18.4%	18.4%	25.5%	22.7%
Slightly Important	8.4%	13.2%	4.4%	2.6%	9.1%	8.6%
Not Important	4.2%	4.6%	1.5%	10.5%	0.0%	3.8%
Number Responding	237	174	136	38	55	640
<b>29. Quality of SIUE Education Relative to That of Friends at Other Schools</b>						
Among the Best	8.1%	12.1%	9.0%	10.3%	5.5%	9.3%
Above Average	35.7%	37.4%	40.6%	35.9%	38.2%	37.4%
Average	47.2%	42.5%	44.4%	48.7%	52.7%	45.9%
Below Average	8.1%	8.0%	5.3%	5.1%	0.0%	6.6%
Among the Worst	0.9%	0.0%	0.8%	0.0%	3.6%	0.8%
Number Responding	235	174	133	39	55	636
<b>30. Involvement Since Bachelor's Degree with:</b>						
<b>A. Organized, Formal, Career Related Learning (non-degree)</b>						
Currently Involved	26.1%	28.2%	28.6%	25.6%	29.6%	27.4%
Have Been Involved	30.8%	31.0%	42.1%	38.5%	46.3%	35.0%
Never Involved	43.2%	40.8%	29.3%	35.9%	24.1%	37.5%
Number Responding	234	174	133	39	54	634
<b>B. Personal Enrichment Studies</b>						
Currently Involved	28.5%	10.9%	17.3%	15.4%	27.3%	20.4%
Have Been Involved	34.0%	35.1%	36.8%	30.8%	36.4%	34.9%
Never Involved	37.4%	54.0%	45.9%	53.8%	36.4%	44.7%
Number Responding	235	174	133	39	55	636

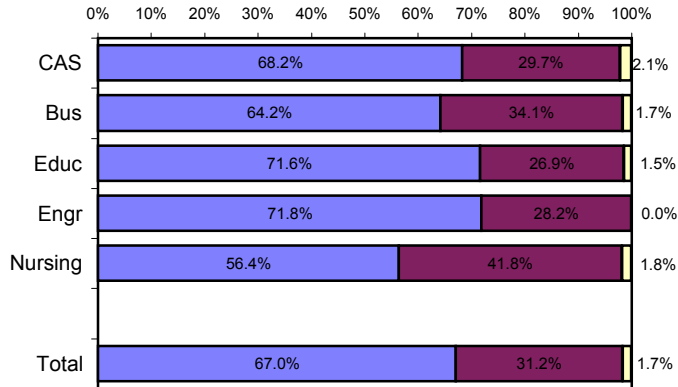
**Southern Illinois University Edwardsville**  
**Survey of 2002 Baccalaureate Graduates -- One Year Out**  
**Survey Responses -- Part VI**  
*Educational Effectiveness Questions*

<b>School Detail, con't.</b>	<b>CAS</b>	<b>Bus</b>	<b>Educ</b>	<b>Engr</b>	<b>Nursing</b>	<b>Total</b>
<b>C. Professional Activities or Organizations</b>						
Currently Involved	35.3%	26.0%	41.5%	35.9%	43.6%	34.9%
Have Been Involved	26.8%	28.9%	34.8%	35.9%	27.3%	29.7%
Never Involved	37.9%	45.1%	23.7%	28.2%	29.1%	35.5%
Number Responding	235	173	135	39	55	637
<b>D. Volunteer Work / Community Svc Activities or Organizations</b>						
Currently Involved	28.5%	18.4%	33.3%	30.8%	30.9%	27.1%
Have Been Involved	31.9%	29.9%	37.0%	28.2%	36.4%	32.6%
Never Involved	39.6%	51.7%	29.6%	41.0%	32.7%	40.3%
Number Responding	235	174	135	39	55	638
<b>E. Social / Recreational Activities or Organizations</b>						
Currently Involved	41.7%	26.4%	36.3%	35.9%	38.2%	35.7%
Have Been Involved	34.9%	38.5%	40.0%	33.3%	38.2%	37.1%
Never Involved	23.4%	35.1%	23.7%	30.8%	23.6%	27.1%
Number Responding	235	174	135	39	55	638
<b>F. Political Activities or Organizations</b>						
Currently Involved	13.2%	2.3%	5.2%	7.7%	3.7%	7.4%
Have Been Involved	17.4%	16.7%	20.9%	12.8%	18.5%	17.8%
Never Involved	69.4%	81.0%	73.9%	79.5%	77.8%	74.8%
Number Responding	235	174	134	39	54	636
<b>G. Religious / Ethical Activities or Organizations</b>						
Currently Involved	23.1%	29.3%	31.6%	23.1%	40.0%	28.1%
Have Been Involved	26.5%	27.0%	33.8%	20.5%	29.1%	28.1%
Never Involved	50.4%	43.7%	34.6%	56.4%	30.9%	43.9%
Number Responding	234	174	136	39	55	638
<b>H. Support or Participation in the Arts (music, drama, dance, art)</b>						
Currently Involved	26.8%	10.9%	12.6%	20.5%	13.0%	17.9%
Have Been Involved	28.9%	29.3%	36.3%	17.9%	27.8%	29.8%
Never Involved	44.3%	59.8%	51.1%	61.5%	59.3%	52.3%
Number Responding	235	174	135	39	54	637
<b>I. Reading books not directly related to your job</b>						
Currently Involved	63.8%	53.4%	66.2%	46.2%	58.2%	59.9%
Have Been Involved	24.7%	26.4%	24.3%	35.9%	27.3%	26.0%
Never Involved	11.5%	20.1%	9.6%	17.9%	14.5%	14.1%
Number Responding	235	174	136	39	55	639

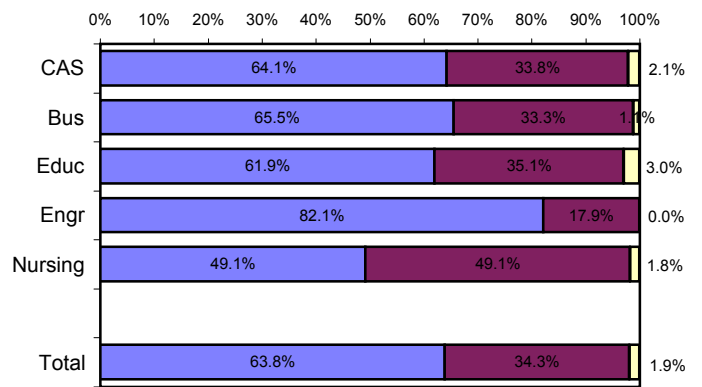
# Helpfulness of University Experiences in:

■ Very to Extremely Helpful    
 ■ Slightly to Moderately Helpful    
 ■ Not Helpful

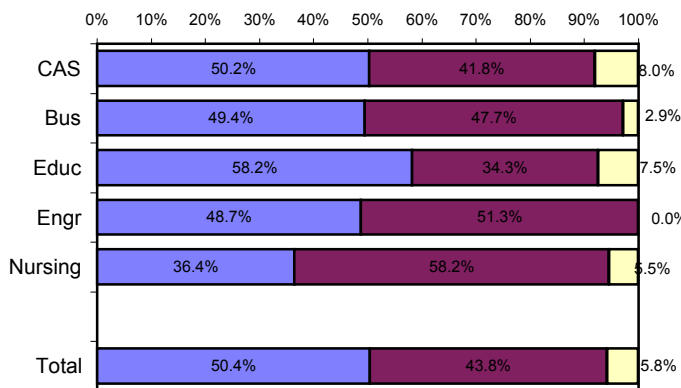
### Viewing Problems from Different Perspectives



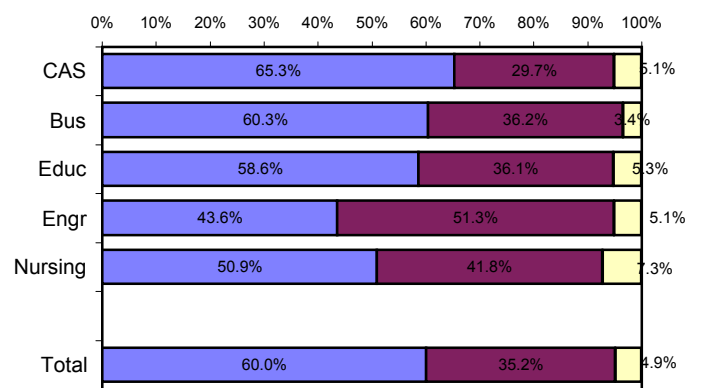
### Developing Ability to Solve Problems



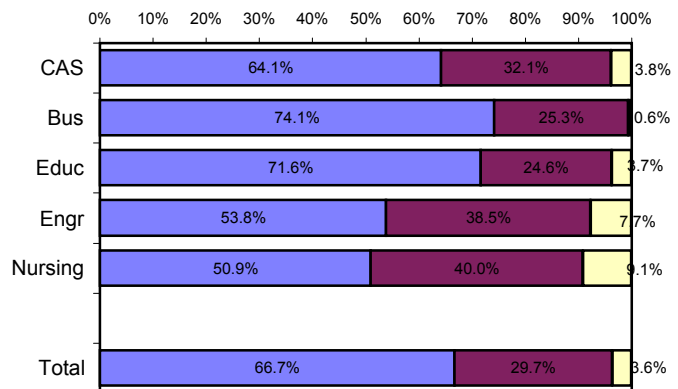
### Making Informed Decisions as a Citizen



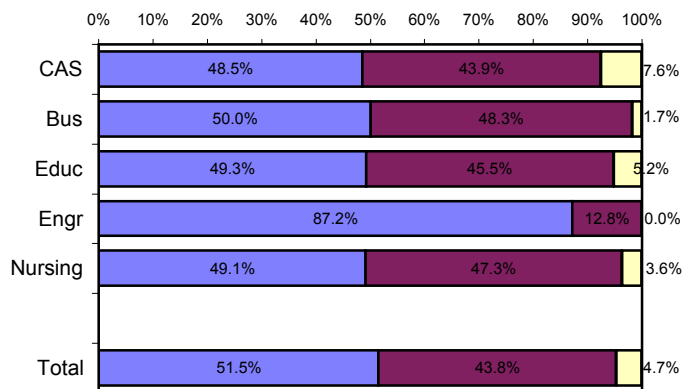
### Developing Writing Skills



### Developing Oral Communication Skills



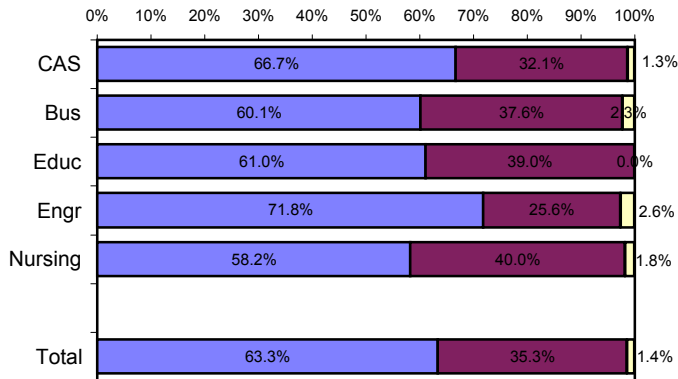
### Developing Knowledge of Scientific and Technological Developments



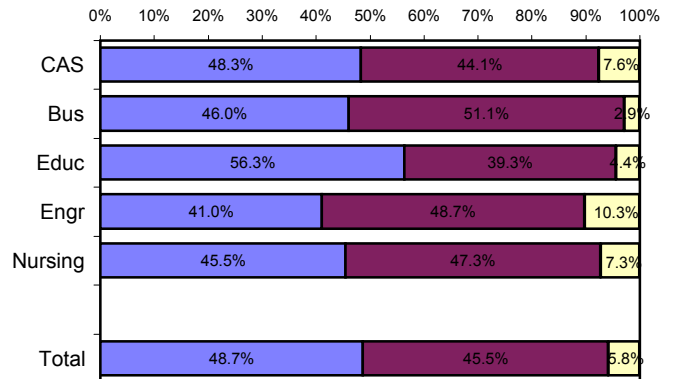
# Helpfulness of University Experiences in:

■ Very to Extremely Helpful    
 ■ Slightly to Moderately Helpful    
 ■ Not Helpful

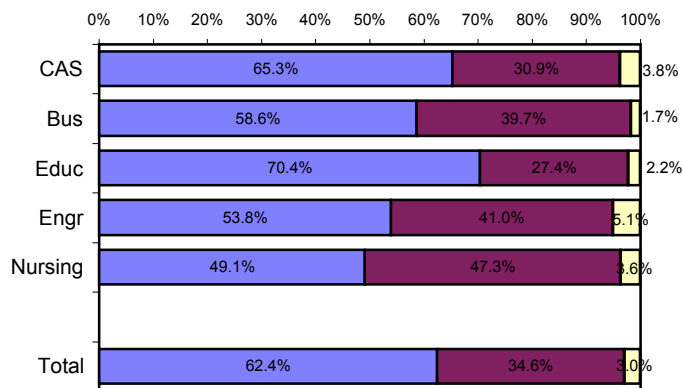
## Developing Critical Thinking Ability



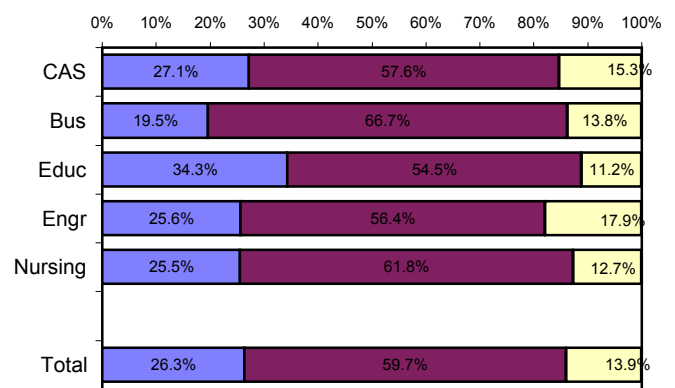
## Developing Sense of Ethics



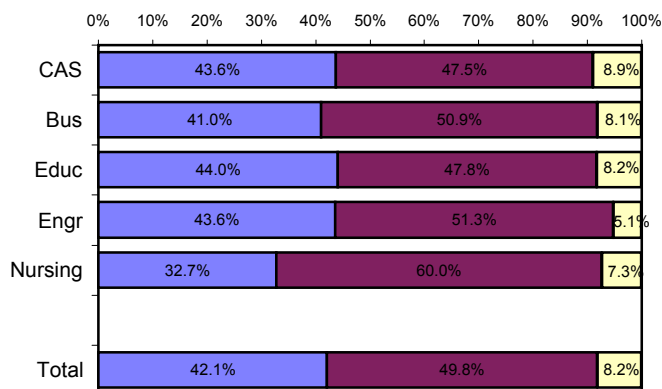
## Understanding People with Different Backgrounds



## Becoming a More Active Citizen



## Improving Quality of Life (aside from financial benefits)



## Developing Reasoning Skills

