



Combined Sewer Overflow Separation

100-Plus Years and Flowing

Founded in 1886, American Water has served customers and communities for more than 130 years. And as the country's largest publicly-traded water and wastewater utility company, we cover a lot ground. Our size and scale differentiate us from our competitors in terms of the type of solutions we can offer our communities. Here are a few of the numbers that we're proud to share.

1 BILLION

Gallons of water treated and delivered every day

7,000

Employees serving communities nationwide

25+

Years receiving awards for quality

Illinois American Water

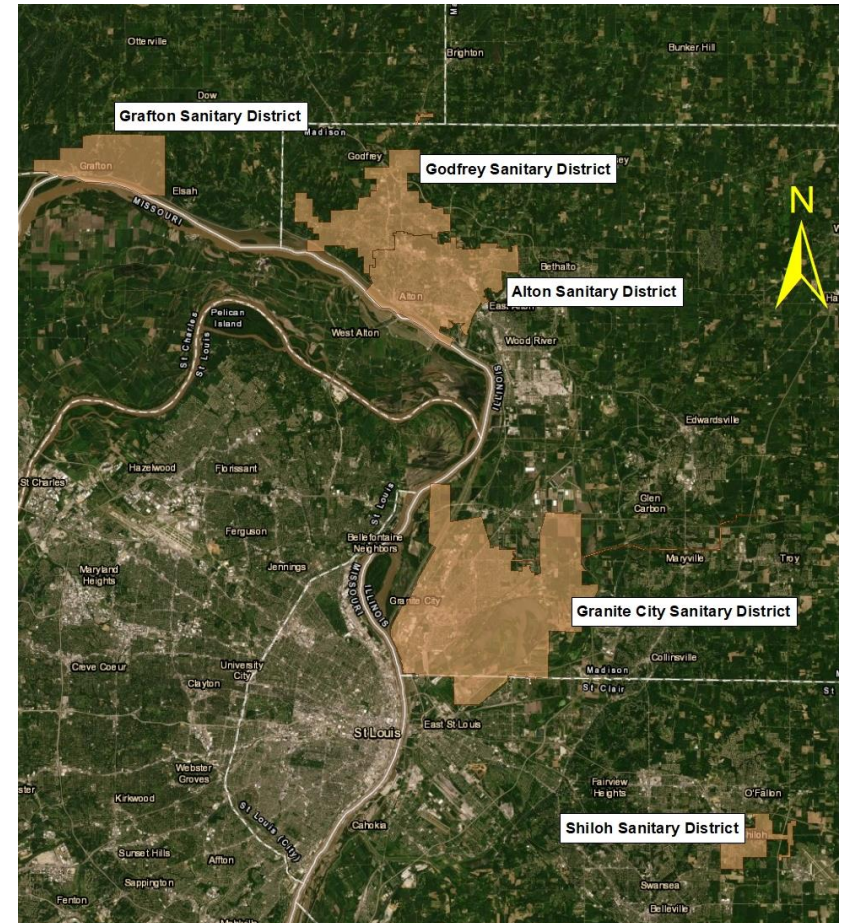
Illinois American Water is a subsidiary of American Water.

- Serve 146 communities in 35 operating districts
- Provide high-quality water and/or wastewater service to 1.3 million residents
- Operate 18 water treatment plants
- Treat and Deliver over 113 million gallons of water per day
- Operate 17 wastewater treatment plants
- Maintain 5,800 miles of water and sewer pipeline
- Maintain 114 water storage facilities
- Maintain 214 water and wastewater pumping stations



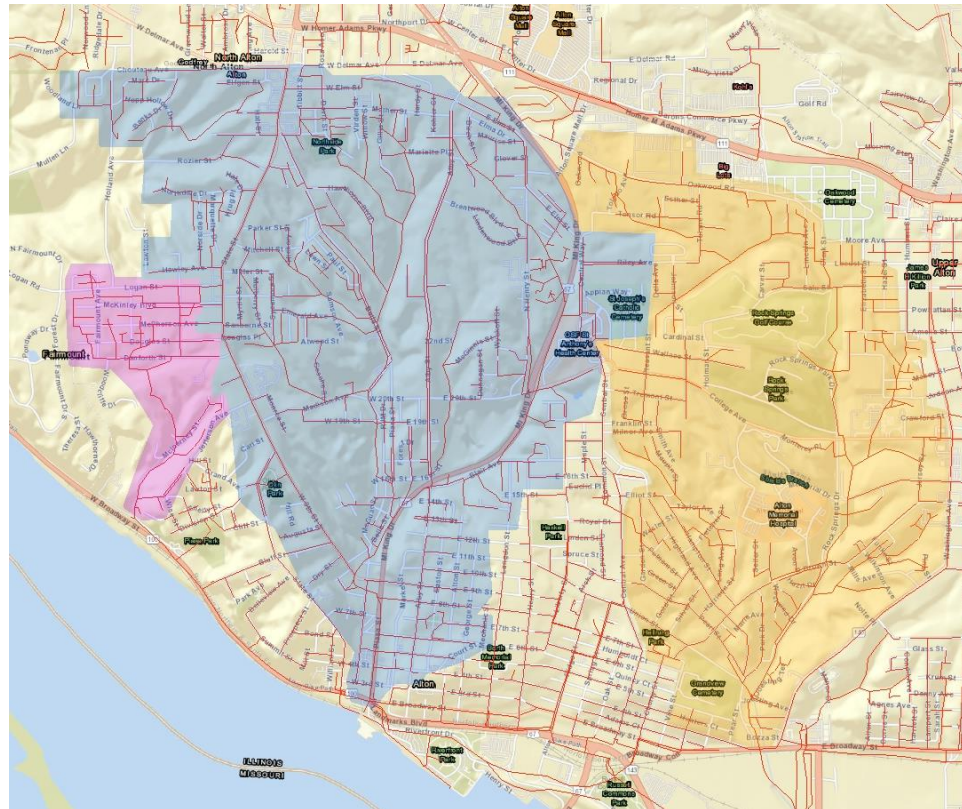
ILAW Nearby Sanitary Districts

District	Year Acquired	Customers	Length of Sewer
Grafton	2016	340	64,000
Godfrey	2019	6,200	527,100
Alton	2019	23,000	1,018,500
Granite City	2020	12,500	676,100
Shiloh	2020	1,515	154,100

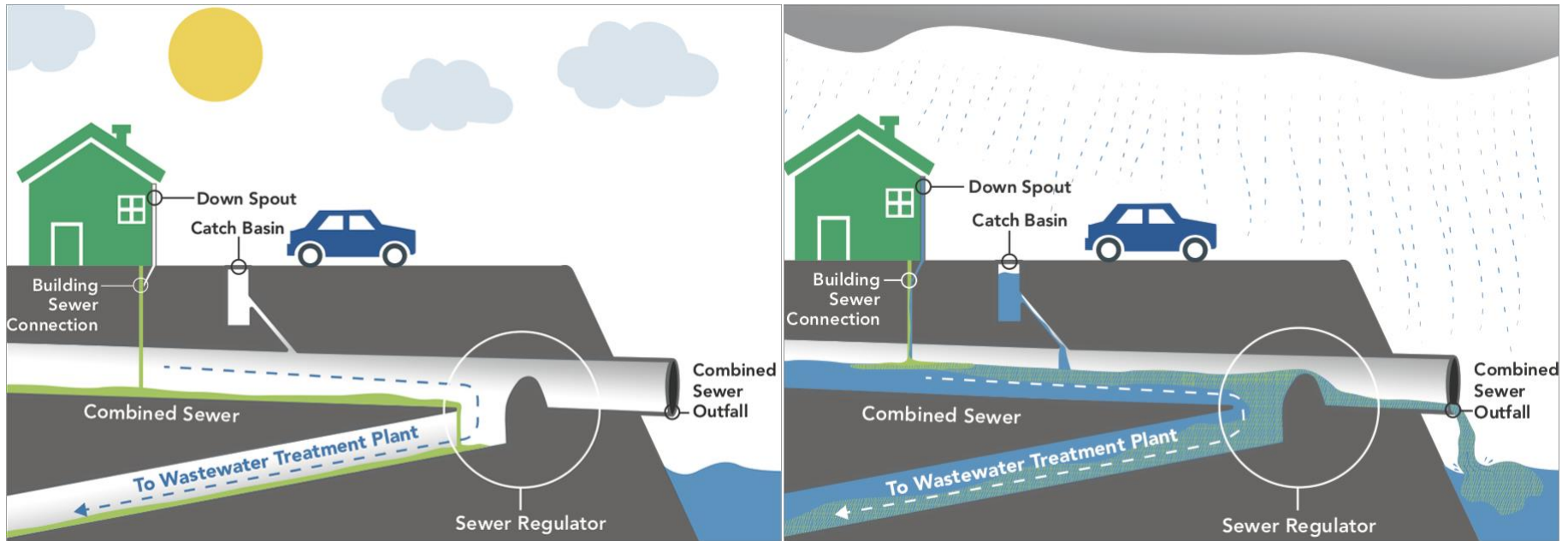


Alton Combined Sewershed

- 2019- purchased sanitary sewer system from Alton
- Purchased included
 - Separate Sanitary sewers
 - Combined sewers
 - Obligation to satisfy Long Term Control Plan (LTCP)
- Revised LTCP
 - New sanitary sewer
 - Environmentally friendly approach
 - Separation projects schedule includes 5 projects spanning from 2020-2030

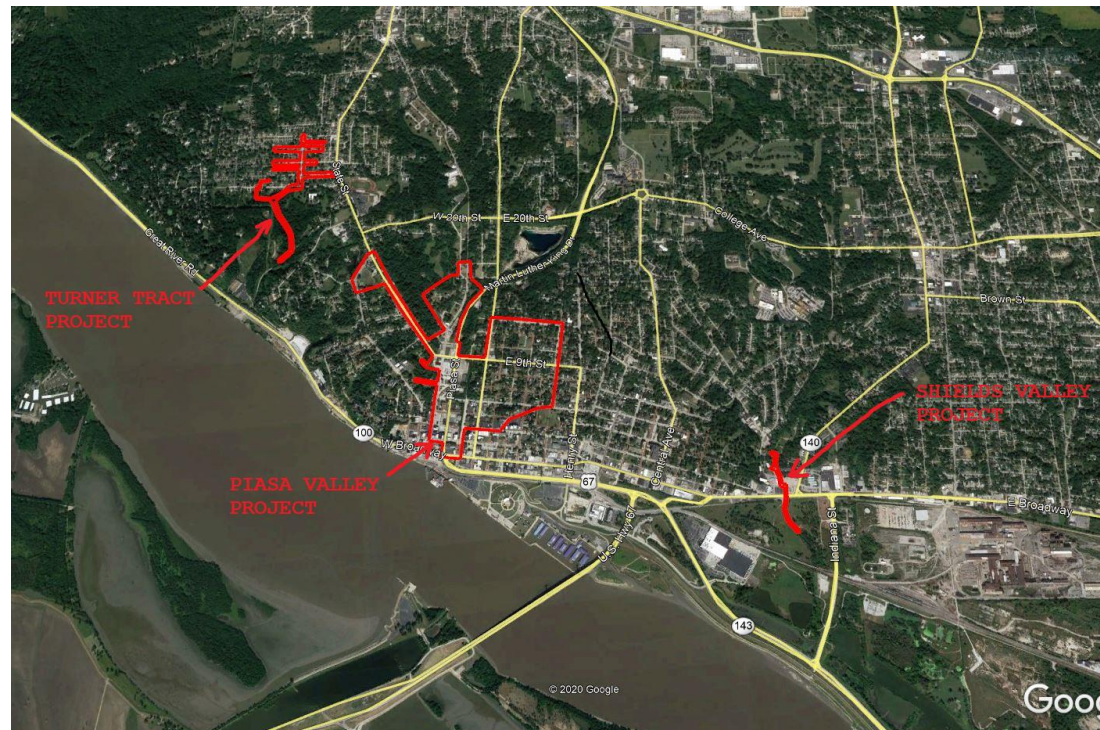


How Combined Sewers Work



Current Projects

- 2020-2023 Separation Projects to be Completed
 - **Turner Tract Separation**
 - April 30, 2022 completion deadline
 - Separation complete
 - **Shields Branch-Rerouting**
 - April 30, 2022 completion deadline
 - Re-routing completed
 - **Piasa Valley Separation**
 - April 30, 2023 completion deadline
 - Three Phases
 - Phase 1 Completed June 2022



Piasa Valley

- Team Members
 - Sheppard, Morgan, Schwaab (SMS)
 - Design
 - Construction Management
 - Kamadulski Excavating
 - Contractor
- Project Details
 - Value- 23 million dollars
 - 5 miles of new sanitary main
 - 2 miles of new sanitary laterals
 - Directly Impacts
 - 600+ customers
 - 80+ businesses
- Construction started June 2021
- 3-Phases of Project
 - Phase 1- Completed (orange)
 - Phase 2- In Progress (teal)
 - Phase 3- Start in 2023(blue)



Piasa Valley

Phase 1

- Work completed
- Direct customer impact
 - 20 businesses
 - 220 Residents
- Communication approach
 - Notification letters
 - Local road closure signage
- Work more challenging than expected
 - Old utilities encapsulated in concrete
 - Old coal chutes connected to buildings
 - Bedrock
 - Poor soils
 - Unidentified utilities
 - Unmarked Utilities
 - Stormwater connections
 - Voids under pavement
 - Restoration-brick streets



Piasa Valley

Phase 1

- Results of Challenging work
 - Delays in progress/schedule
 - Complaints
 - Businesses
 - Lower foot traffic
 - Parking for customers
 - Unexpected work in front of businesses
 - Residents
 - Increased traffic to side streets
 - Not aware when streets will be shut down
 - Slow restoration
 - Rise in cost due to change Orders
- How do we get better???



Piasa Valley

1. Planning

- Investigation ahead of work
 - Interior plumbing of businesses
 - Location of unknown utilities
 - Dye testing to determine active laterals
 - SSES study to determine unwanted stormwater connection
- Soil borings
 - Determines soil conditions
 - Exploratory Excavation
- Review of contaminated sites in area
 - LUST sites
 - Remediated sites
- Review of traffic detours and impacts
 - High traffic streets
 - One-way streets
 - Business parking
- Work with City officials and local utilities
 - Shared restoration
 - Minimize disruption time to customers



Piasa Valley

2. Communication

- Business owner meetings
 - Explain project expectations
 - Receive feedback and concerns
- Weekly communication update to public
 - Published in local media outlets
 - Engage city officials
- Notification Postcards for upcoming work
 - Update customers 2-3 weeks in advance
- Dedicated access to businesses
- Suggested parking areas for customers
- Billboard signage for traffic understanding

Road Closures



Illinois American Water's work to separate the Alton combined sewer system and install new sanitary sewers continues.

Below is information about road closures – October 24, 2022

Piasa Valley Area: 6th Street is still closed from Alton Street east to George Street. This stretch of roadway will continue to be closed to all thru traffic for a month or two. A watermain replacement is anticipated and is awaiting a permit from the IDPA.



Belle Street from 3rd Street north to 6th Street is now back open to traffic, along with the east-west blocks adjacent to Belle Street.



ILLINOIS AMERICAN WATER WAS RANKED HIGHEST IN CUSTOMER SATISFACTION WITH LARGE WATER UTILITIES IN THE MIDWEST THREE YEARS IN A ROW!
For J.D. Power 2022 award information, visit jdpower.com/surveys.

WE ARE INVESTING IN ALTON SEWER SEPARATION PROJECTS

Several projects are kicking off in the City of Alton to separate the combined sewer system.



Piasa Valley

Phase 2

- Work Started July 2022
- Direct customer impact
 - 60 businesses
 - 400 Residents
- Applied lessons learned from Phase I
 - Planning for unknowns
 - Get support from local businesses
 - Better communication to public
 - Partnership with local city officials and utilities
- Results
 - Very little complains
 - Community support
 - Successful project



LESSONS LEARNED

- How to minimize impacts to businesses
 - Weekly communication
 - Open business signs
 - Post card reminders of upcoming work
 - Social media updates
 - Dedicated access to businesses
 - Suggested parking areas
 - Initial investigation of sewer laterals & utilities to minimize downtime
 - Obtain input from business owners
- Low impact excavation utilizing hydro-excavation
- Coordination with other utilities to minimize work and road closure
- Dye testing and televising equipment to help identify unknowns
- Soil borings to identify soil challenges



ILAW St. Louis Metro-East River Intakes

Why is separating Alton's combined sewers so important?

- Mississippi River Source Water
- ILAW has three Major Intakes (Firm Capacity)
 - Alton: 22 MGD
 - Chouteau Island: 34.6 MGD
 - E. St. Louis: 72.6 MGD

